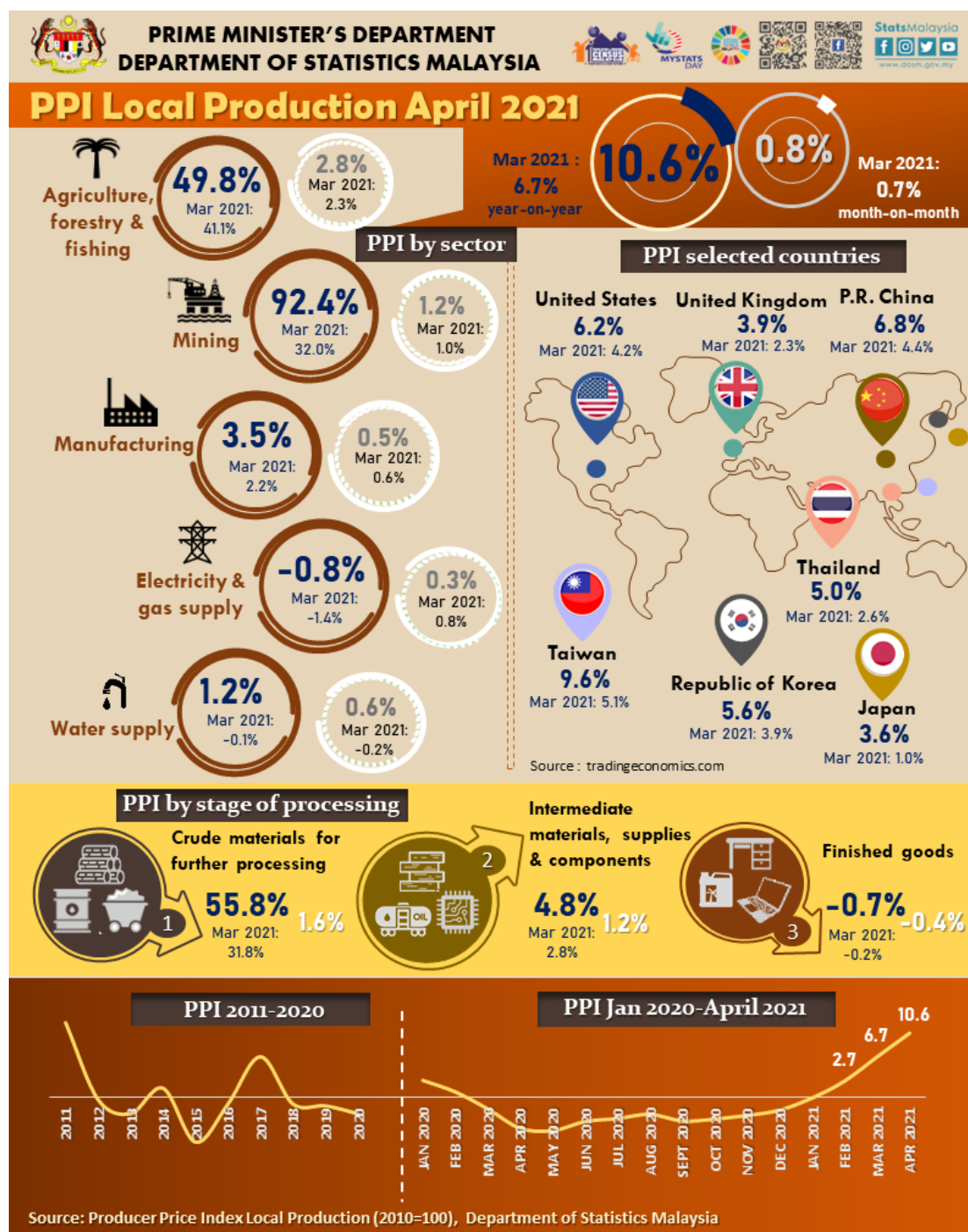




MINISTRY OF ECONOMY
DEPARTMENT OF STATISTICS MALAYSIA

PRODUCER PRICE INDEX MALAYSIA APRIL 2021



PRODUCER PRICE INDEX (2010=100) BY SECTOR (MSIC 2008)

The Producer Price Index (PPI) of local production climbed 10.6 per cent in April 2021, 3.9 points higher than 6.7 per cent recorded last month. The growth was driven by the Mining index which surged 92.4 per cent from 32.0 per cent in the previous month. The sharp rise was mainly due to a low base effect and continued rise in commodity and raw material prices, as a result of the recovery in global demand and various supply constraints. The Agriculture, forestry & fishing index continued to increase 49.8 per cent as compared to 41.1 per cent in the previous month. Subsequently, Manufacturing and Water supply indices also registered an increase of 3.5 per cent and 1.2 per cent respectively. Meanwhile, Electricity & gas supply index decline 0.8 per cent.

On a monthly basis, the PPI local production registered marginal increase of 0.8 per cent in April 2021 as compared to 0.7 per cent in the previous month. All sectors showed a momentum of growth; Agriculture, forestry & fishing (2.8%), Mining (1.2%), Water supply (0.6%), Manufacturing (0.5%) and Electricity & gas supply (0.3%).

Table 1 : Producer Price Index (2010=100) Local Production by Sector (MSIC 2008), Malaysia

Sector	Code	Weight	Index	Percentage Change					
				Year-on-Year			Month-on-Month		
			Apr 2021	Feb 2021/ Feb 2020	Mar 2021/ Mar 2020	Apr 2021/ Apr 2020	Feb 2021/ Jan 2021	Mar 2021/ Feb 2021	Apr 2021/ Mar 2021
Total		100.000	110.5	2.7	6.7	10.6	1.5	0.7	0.8
Agriculture, forestry & fishing	A	6.730	147.1	35.0	41.1	49.8	2.2	2.3	2.8
Mining	B	7.927	86.0	-11.0	32.0	92.4	12.9	1.0	1.2
Manufacturing	C	81.571	109.8	1.5	2.2	3.5	0.5	0.6	0.5
Electricity & gas supply	D	3.442	117.1	-1.9	-1.4	-0.8	0.3	0.8	0.3
Water supply	E	0.330	112.4	0.8	-0.1	1.2	-0.4	-0.2	0.6

PRODUCER PRICE INDEX BY STAGE OF PROCESSING

The index of Crude materials for further processing surged to 55.8 per cent in April 2021 as compared to 31.8 per cent recorded in March 2021. The index of Intermediate materials, supplies & components also increased 4.8 per cent. Meanwhile, Finished goods index recorded negative 0.7 per cent, due to lower price in semiconductor related to electric & electronics components and motor vehicles. However, Finished goods related to food products registered an increase of 3.8 per cent.

Month on Month, Crude materials for further processing and Intermediate materials, supplies & components indices registered an increase of 1.6 per cent and 1.2 per cent respectively. Meanwhile, Finished goods declined 0.4 per cent.

Table 2 : Producer Price Index (2010=100) Local Production by Stage of Processing

			Index	Percentage Change					
				Year-on-Year			Month-on-Month		
Stage of Processing	Code	Weight	Apr 2021	Feb 2021/ Feb 2020	Mar 2021/ Mar 2020	Apr 2021/ Apr 2020	Feb 2021/ Jan 2021	Mar 2021/ Feb 2021	Apr 2021/ Mar 2021
Total		100.000	110.5	2.7	6.7	10.6	1.5	0.7	0.8
Crude materials for further processing	1	16.410	120.0	10.0	31.8	55.8	5.4	1.9	1.6
Intermediate materials, supplies and components	2	56.119	111.9	1.5	2.8	4.8	0.9	0.7	1.2
Finished goods	3	27.471	101.1	0.4	-0.2	-0.7	-0.1	-0.3	-0.4

The full publication of the Producer Price Index Malaysia, April 2021 can be downloaded from [eStatistik](#) portal.

Released by:

DATO' SRI DR. MOHD UZIR MAHIDIN
CHIEF STATISTICIAN MALAYSIA
DEPARTMENT OF STATISTICS, MALAYSIA

 DrUzir_Mahidin   Dr_Uzir

#myHariBulan# #myBulan# #myTahun#

Contact person:

Mohd Yusrizal Ab Razak
Public Relation Officer
Strategic Communication and International Division
Department of Statistics, Malaysia
Tel : +603-8885 7942
Fax : +603-8888 9248
E-mail : yusrizal.razak[at]dosm.gov.my

Contact person:

Baharudin Mohamad
Public Relation Officer
Strategic Communication and International Division
Department of Statistics Malaysia
Tel : +603-8090 4681
Fax : +603-8888 9248
Email : baharudin[at]dosm.gov.my

Copyright ©2025 Department of Statistics Malaysia Official Portal. All Rights Reserved.