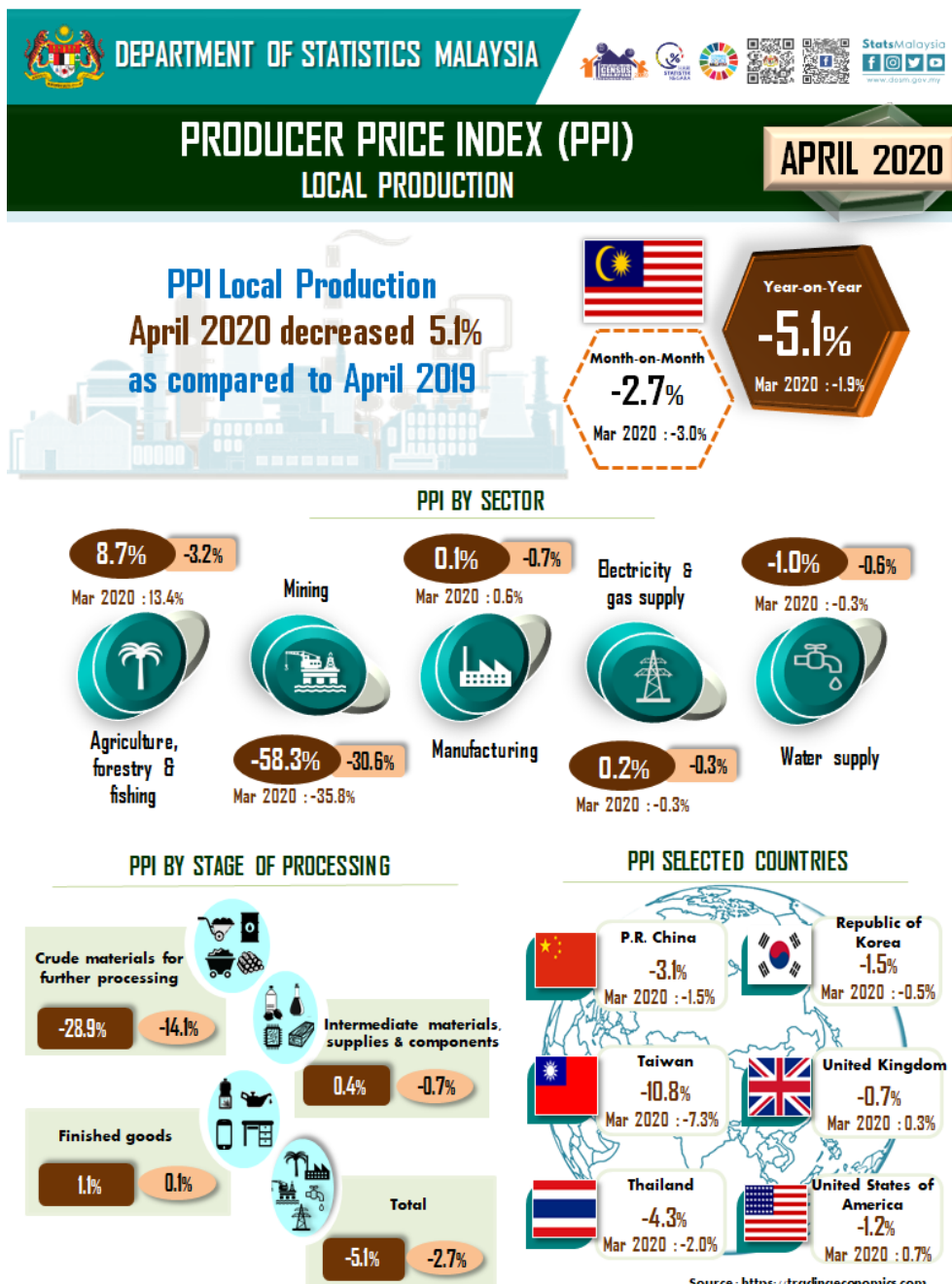




MINISTRY OF ECONOMY
DEPARTMENT OF STATISTICS MALAYSIA

PRODUCER PRICE INDEX MALAYSIA APRIL 2020



Source : Producer Price Index Local Production (2010=100), Department of Statistics Malaysia

PRODUCER PRICE INDEX (2010=100) BY SECTOR (MSIC 2008)

The Producer Price Index (PPI) local production decreased 5.1 per cent in April 2020 to 99.9 as against 105.3 in the same month of the previous year. This is the lowest rate of change recorded since November 2015. The Mining index registered a higher rate of decline at 58.3 per cent while Water supply index drop at 1.0 per cent. In contrast, the index of Agriculture, forestry & fishing increased 8.7 per cent followed by Electricity & gas supply index (0.2%) and Manufacturing index (0.1%).

On a monthly basis, the PPI local production dropped 2.7 per cent as compared to March 2020. The decline was contributed by the decrease in all sectors: Mining (-30.6%), Agriculture, forestry & fishing (-3.2%), Manufacturing (-0.7%), Water supply (-0.6%) and Electricity & gas supply (-0.3%). [Table 1]

Table 1 : Producer Price Index (2010=100) Local Production by Sector (MSIC 2008), Malaysia

Sector	Code	Weights	Index	Percentage Change					
				Year-on-Year			Month-on-Month		
			Apr 2020	Feb 2020/ Feb 2019	Mar 2020/ Mar 2019	Apr 2020/ Apr 2019	Feb 2020/ Jan 2020	Mar 2020/ Feb 2020	Apr 2020/ Mar 2020
Total		100.000	99.9	0.9	-1.9	-5.1	-1.3	-3.0	-2.7
Agriculture, forestry & fishing	A	6.730	98.2	9.2	13.4	8.7	-7.3	-2.1	-3.2
Mining	B	7.927	44.7	-5.2	-35.8	-58.3	-9.1	-31.9	-30.6
Manufacturing	C	81.571	106.1	0.8	0.6	0.1	0.1	-0.2	-0.7
Electricity & gas supply	D	3.442	118.1	1.6	-0.3	0.2	0.3	0.2	-0.3
Water supply	E	0.330	111.1	-0.8	-0.3	-1.0	-0.6	0.7	-0.6

PRODUCER PRICE INDEX BY STAGE OF PROCESSING

As compared with the same month a year ago, the PPI for local production by stage of processing (SOP) for April 2020 decreased 5.1 per cent. The decrease was supported by the negative index of Crude materials for further processing at 28.9 per cent. Nevertheless, the index of Finished goods and Intermediate materials, supplies & components increased 1.1 per cent and 0.4 per cent respectively.

The decrease 2.7 per cent in PPI local production by SOP from previous month was due to the decline in Crude materials for further processing (-14.1%) and Intermediate materials, supplies & components (-0.7%). Conversely, Finished goods rose 0.1 per cent. [Table 2]

Table 2 : Producer Price Index (2010=100), Local Production by Stage of Processing

Stage of Processing	Code	Weights	Index						
			Apr 2020	Year-on-Year			Percentage Change		
				Feb 2020/ Feb 2019	Mar 2020/ Mar 2019	Apr 2020/ Apr 2019	Feb 2020/ Jan 2020	Mar 2020/ Feb 2020	Apr 2020/ Mar 2020
Total		100.000	99.9	0.9	-1.9	-5.1	-1.3	-3.0	-2.7
Crude materials for further processing	1	16.410	77.0	0.1	-13.9	-28.9	-7.5	-15.0	-14.1
Intermediate materials, supplies and components	2	56.119	106.8	1.5	0.8	0.4	0.6	-0.6	-0.7
Finished goods	3	27.471	101.8	0.2	0.7	1.1	-0.4	0.3	0.1

Released by:

DATO' SRI DR. MOHD UZIR MAHIDIN
CHIEF STATISTICIAN MALAYSIA
DEPARTMENT OF STATISTICS, MALAYSIA

 [DrUzir_Mahidin](#)  [Dr_Uzir](#) 

#myHariBulan# #myBulan# #myTahun#

Contact person:

Mohd Yusrizal Ab Razak
 Public Relation Officer
 Strategic Communication and International Division
 Department of Statistics, Malaysia
 Tel : +603-8885 7942
 Fax : +603-8888 9248
 Email : yusrizal.razak[at]dosm.gov.my

Contact person:

Baharudin Mohamad

Public Relation Officer
Strategic Communication and International Division
Department of Statistics Malaysia
Tel : +603-8090 4681
Fax : +603-8888 9248
Email : baharudin[at]dosm.gov.my

Copyright ©2025 Department of Statistics Malaysia Official Portal. All Rights Reserved.