

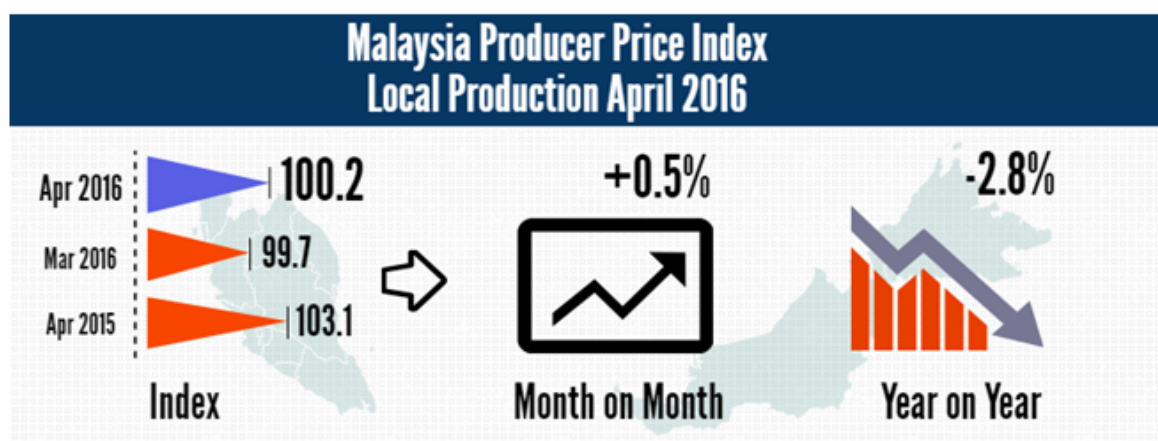


MINISTRY OF ECONOMY
DEPARTMENT OF STATISTICS MALAYSIA

PRODUCER PRICE INDEX MALAYSIA APRIL 2016

Local Production

The Producer Price Index (PPI) for local production measures the average change in the prices of commodities charged by domestic producers of an industry in a reference month compared with the base year.



Producer Price Index (2010=100) By Sector (MSIC 2008)

Year-on-year comparison showed that the PPI for local production fell 2.8 per cent in April 2016. The highest drop was recorded by Mining index (-29.6%), followed by Electricity & gas (-3.8%) and Manufacturing (-1.3%). Meanwhile, the index for Agriculture, forestry & fishing and Water supply showed an increase of 15.0 per cent and 6.7 per cent respectively. [Table I]

The PPI for local production inclined by 0.5 per cent in April 2016 as compared to March 2016. This was due to increases in Agriculture, forestry & fishing (+2.8%), Water supply (+2.1%) and Manufacturing (+0.3%). Meanwhile, the index for Electricity & gas decreased (-1.1%) and index for Mining remained unchanged.

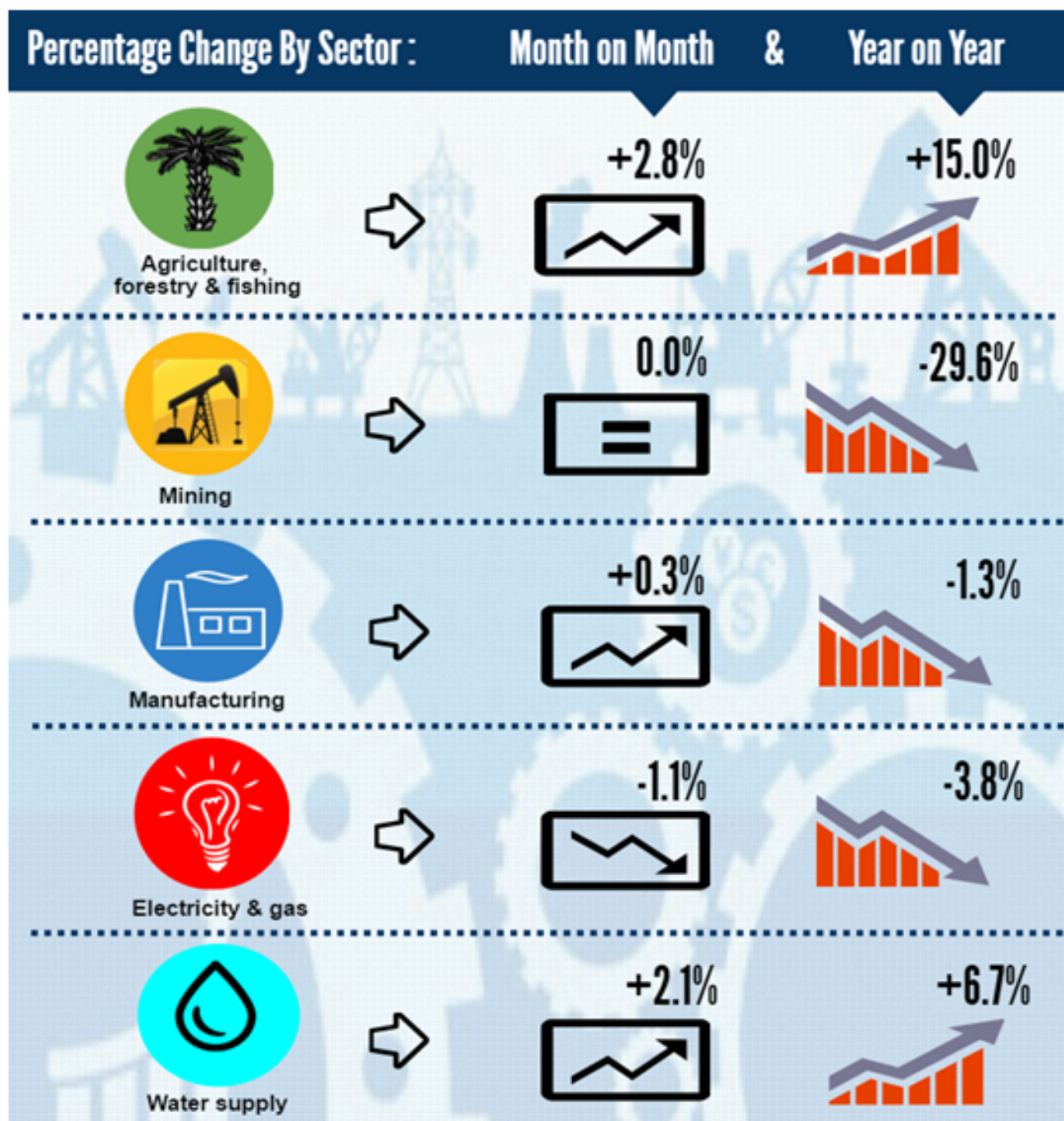
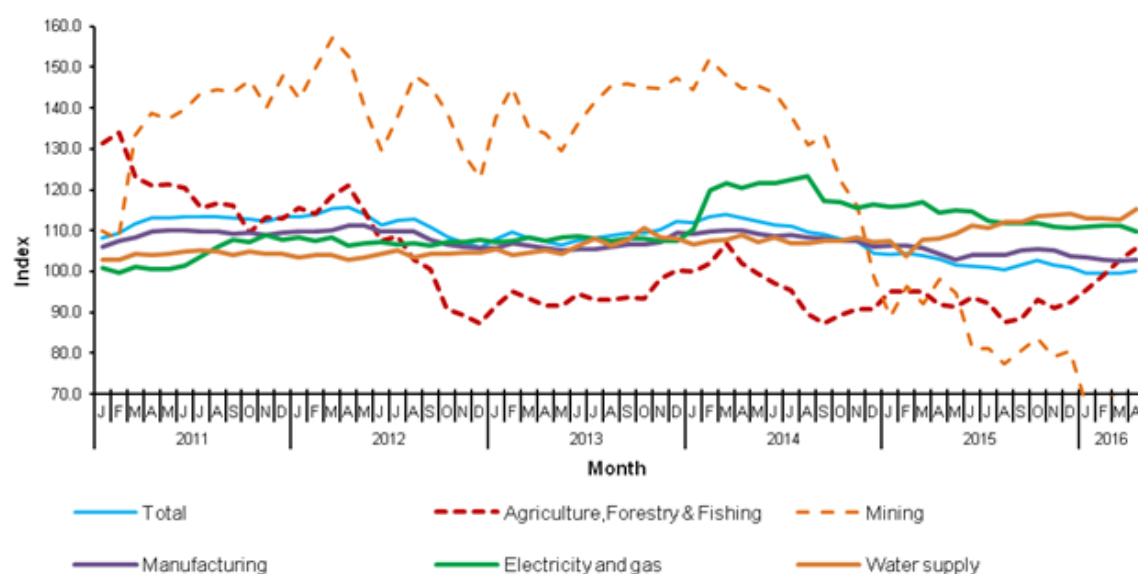


Table I: Producer Price Index (2010=100) Local Production By Sector (MSIC 2008), Malaysia

Sector	Code	Weight	Index	Percentage Change Month on Month			Percentage Change Year on Year		
				April 2016	Feb. 2016 / Jan. 2016	Mar. 2016 / Feb. 2016	Apr. 2016 / Mar. 2016	Feb. 2016/ Feb. 2015	Mar. 2016/ Mar. 2015
Total		100.00	100.2	0.1	0.1	0.5	-4.8	-3.9	-2.8
Agriculture, Forestry & Fishing	A	8.15	105.8	3.3	3.9	2.8	4.2	8.3	15.0
Mining	B	9.67	69.1	4.2	-0.9	0.0	-27.8	-24.9	-29.6
Manufacturing	C	78.79	103.0	-0.6	-0.1	0.3	-3.2	-2.8	-1.3
Electricity & gas	D	3.05	109.9	0.2	-0.1	-1.1	-4.2	-5.0	-3.8
Water supply	E	0.34	115.2	-0.1	-0.1	2.1	8.8	4.6	6.7

Chart I: Producer Price Index (2010=100) Local Production By Sector, 2011-2016



Producer Price Index By Stage of Processing

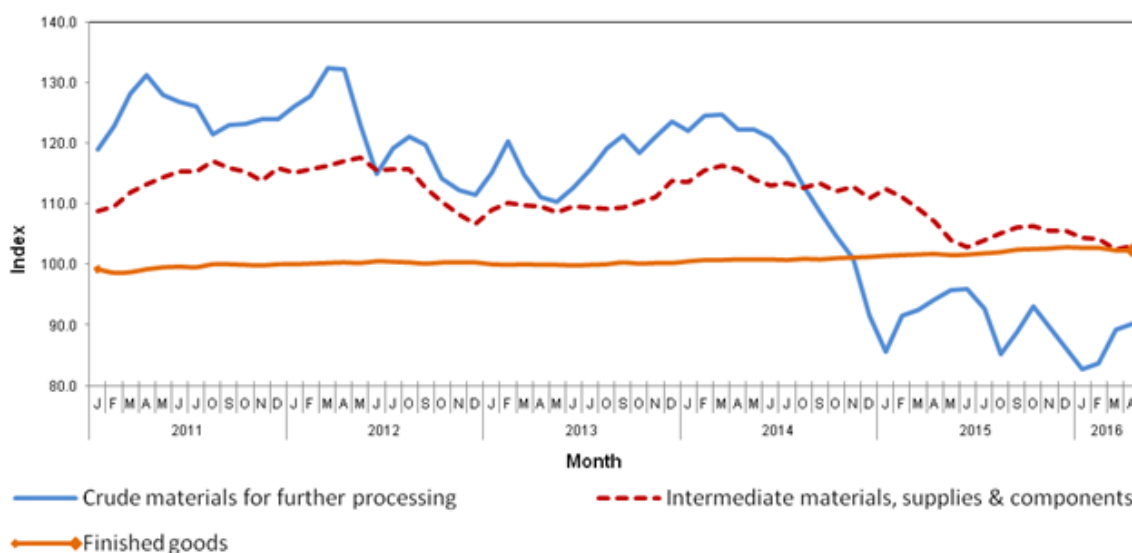
The PPI for local production by stage of processing (SOP) inclined by 0.5 per cent in April 2016 compared to the previous month. This inclination was due to an increase in Crude materials for further processing (+1.0%) and Intermediate materials, supplies and components (+ 0.6%). However, Finished goods remained unchanged. [Table II]

As compared with the same month a year ago, the PPI for local production by SOP for April 2016 dropped by 2.8 per cent. This was due to decreases in index for Crude materials for further processing (-4.4%), followed by index for Intermediate materials, supplies and components (-3.8%). However, index for Finished goods increased by 0.6 per cent.

Table II: Producer Price Index (2010-100), Local Production by Stage of Processing

Stage Of Processing	Code	Weight	Index	Percentage Change Month on Month			Percentage Change Year on Year		
			April 2016	Feb. 2016 / Jan. 2016	Mar. 2016 / Feb. 2016	Apr. 2016 / Mar. 2016	Feb. 2016/ Feb. 2015	Mar. 2016/ Mar. 2015	Apr. 2016 / Apr. 2015
Total		100.00	100.2	0.1	0.1	0.5	-4.8	-3.9	-2.8
Crude materials for further processing	1	20.32	90.1	1.1	6.7	1.0	-8.6	-3.5	-4.4
Intermediate materials, supplies and components	2	53.56	103.0	-0.2	-1.6	0.6	-6.3	-6.2	-3.8
Finished goods	3	26.12	102.4	0.0	-0.4	0.0	1.2	0.7	0.6

Chart II: Producer Price Index (2010=100), Local Productions By Stage of Processing



RELEASED BY:

**THE OFFICE OF CHIEF STATISTICIAN MALAYSIA
DEPARTMENT OF STATISTICS MALAYSIA**

31 MAY 2016

Contact person:

Ho Mei Kei
Public Relation Officer
Corporate and User Services Division
Department of Statistics, Malaysia
Tel : +603-8885 7942
Fax : +603-8888 9248
Email : mkho[at]stats.gov.my

Contact person:

Baharudin Mohamad
Public Relation Officer
Strategic Communication and International Division
Department of Statistics Malaysia
Tel : +603-8090 4681
Fax : +603-8888 9248
Email : baharudin[at]dosm.gov.my

Copyright ©2025 Department of Statistics Malaysia Official Portal. All Rights Reserved.