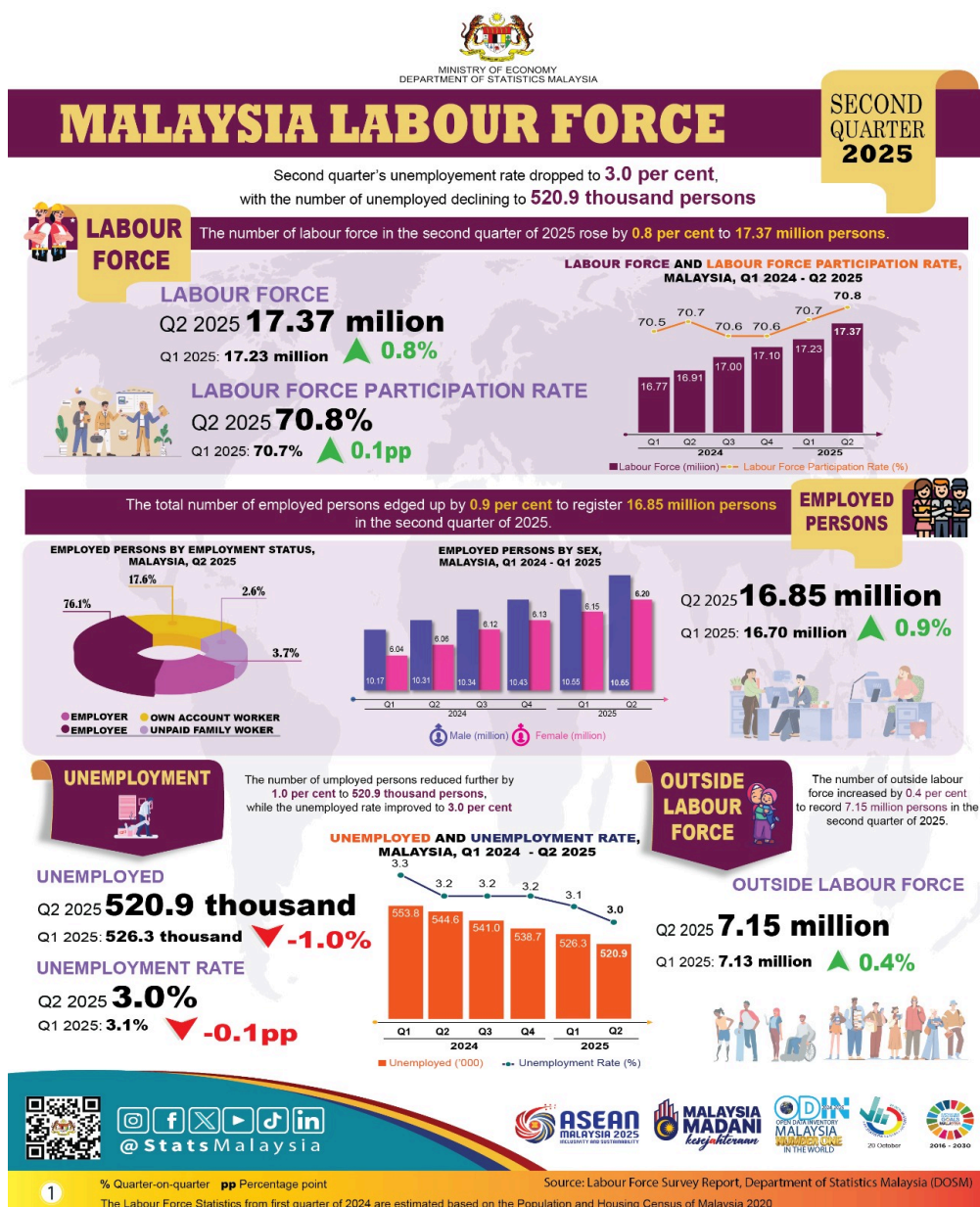




MINISTRY OF ECONOMY
DEPARTMENT OF STATISTICS MALAYSIA

PRINCIPAL STATISTICS OF LABOUR FORCE, MALAYSIA, SECOND QUARTER 2025



- The **labour force** continued to post an increase in the second quarter of 2025, with a rise of **0.8 per cent** or **140.6 thousand persons** to register **17.37 million persons** (Q1 2025: 17.23 million persons). A higher **labour force participation rate (LFPR)** was recorded during the quarter at **70.8 per cent**, rose by **0.1 percentage points** from 70.7 per cent in the preceding quarter.
- In the second quarter of 2025, the number of **employed persons** continued its upward trend, escalated by **0.9 per cent (+146.0 thousand persons)** to record a total of **16.85 million** (Q1 2025: 16.70 million persons). In terms of year-on-year comparison, the number of employed persons strengthened by **2.9 per cent** or equivalent to **480.7 thousand persons** compared to the second quarter of 2024 (Q2 2024: 16.37 million persons).
- During this quarter, the number of **unemployed persons** continued to drop by **1.0 per cent** or equivalent to a reduction of **5.4 thousand persons** to **520.9 thousand persons** (Q1 2025: 526.3 thousand persons). Consequently, a lower **unemployment rate** was recorded in the second quarter of 2025 at **3.0 per cent** compared to 3.1 per cent in the previous quarter. Year-on-year comparison showed the unemployment rate also reduced by **0.1 percentage points** corresponding to decline of **23.7 thousand persons** (Q2 2024: 544.6 thousand persons; 3.2%).
- At the national level, the **labour force participation rate (LFPR)** increased to **70.8 per cent** in the second quarter of 2025. **Eleven states** recorded increases in the LFPR, indicating improved labour participation in the market. The highest LFPR was recorded by **Selangor (78.0%)**, followed by **W.P. Putrajaya (77.6%)** and **W.P. Kuala Lumpur (75.5%)**.
- In terms of the **unemployment rate by state, nine states** surpassed the **national unemployment rate** at **3.0 per cent**. The lowest unemployment rate during this quarter was recorded in the states of **W.P. Putrajaya** with **1.4 per cent**, followed by **Pahang (1.8%)**, and **Selangor (1.9%)**.

Note: The Labour Force Statistics from first quarter of 2024 are estimated based on the Population and Housing Census of Malaysia 2020

The full publication of the Labour Force Survey Report, Second Quarter 2025 can be downloaded through eStatistic Portal.

Released by:

DEPARTMENT OF STATISTICS MALAYSIA

11 AUGUST 2025

Contact person:

Baharudin Mohamad

Public Relation Officer

Strategic Communication and International Division

Department of Statistics Malaysia

Tel : +603-8090 4681

Fax : +603-8888 9248

Email : baharudin[at]dosm.gov.my

Copyright ©2025 Department of Statistics Malaysia Official Portal. All Rights Reserved.