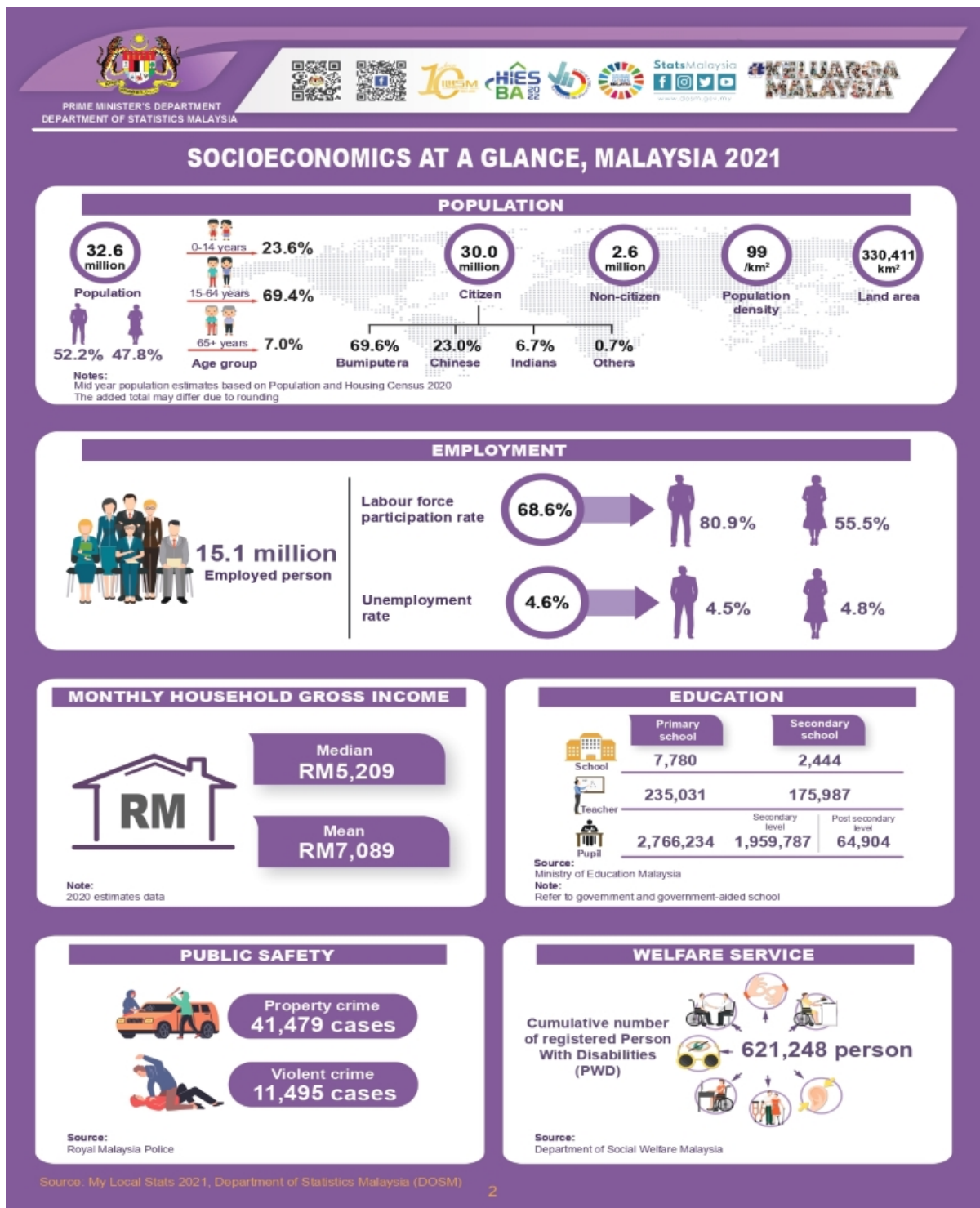




MINISTRY OF ECONOMY  
DEPARTMENT OF STATISTICS MALAYSIA

MY LOCAL STATS 2021







PRIME MINISTER'S DEPARTMENT  
DEPARTMENT OF STATISTICS MALAYSIA



## SOCIOECONOMICS AT A GLANCE, MALAYSIA 2021

### HEALTH



**2,645.1 thousand**  
Number of COVID-19 cases

Source:  
Ministry of Health Malaysia  
Note:  
For those aged 5 years and above



**24,987.3 thousand**  
Number of COVID-19 vaccine  
recipients that received two  
complete doses

### TOURISM



Domestic visitor  
65,976.0 thousand persons

Domestic tourist  
14,882.8 thousand persons

Notes:  
1. Domestic visitors refer to those who travel less than 24 hours.  
2. Domestic tourists refer to those who travel at least one night (24 hours).

#### Number of tourist arrivals by countries



Source:  
Tourism Malaysia

### GROSS DOMESTIC PRODUCT (GDP) (2015=100)

GDP at  
Constant Price → **RM1.39  
trillion**

Growth Rate → **3.1%**

GDP  
Per Capita → **RM47,439**

#### Percentage Share to GDP by Types of Economy Activity at Constant Price



**7.1%**  
Agriculture



**6.7%**  
Mining &  
Quarrying



**24.3%**  
Manufacturing



**3.7%**  
Construction



**57.0%**  
Services

### CONSUMER PRICE INDEX (CPI) (2010=100)

**CPI 2021: 2.5%**

Percentage change of CPI by three main groups



**1.7%**

Food & Non-Alcoholic  
Beverages



**1.5%**

Housing, Water,  
Electricity, Gas &  
Other Fuels



**11.0%**

Transport

### EXPORTS AND IMPORTS



Exports  
**RM1,239.8 billion**

Imports  
**RM987.2 billion**

Source: My Local Stats 2021, Department of Statistics Malaysia (DOSM)



PRIME MINISTER'S DEPARTMENT  
DEPARTMENT OF STATISTICS MALAYSIA



StatsMalaysia  
f i t t  
www.dosm.gov.my

## MY LOCAL STATS 2021

### Selected statistics by administrative district<sup>1</sup>

#### POPULATION



	('000)
Petaling	2,315.7
Johor Bahru	1,715.4
Ulu Langat	1,393.3
Klang	1,078.7
Gombak	948.0

Note:  
Mid year population estimates based on Population and Housing Census 2020

#### Employment

##### Labour Force Participation Rate (LFPR)



Malaysia	68.6
Klang, Beluran	77.9
Petaling	77.8
Seberang Perai Selatan	77.5
Ranau	76.7
Ulu Selangor, Ulu Langat	76.1

Note:  
Preliminary data

#### HOUSING

##### Number of living quarters



Malaysia	9,614,139
Petaling	679,812
W.P. Kuala Lumpur	634,639
Johor Bahru	610,314
Ulu Langat	431,574
Klang	301,407

Note:  
Population and Housing Census 2020 data

#### EDUCATION

##### Number of schools



Malaysia	7,780
W.P. Kuala Lumpur	190
Johor Bahru	181
Petaling	148
Batu Pahat	144
Kinta	140
Malaysia	2,444
W.P. Kuala Lumpur	104
Johor Bahru	87
Petaling	77
Kinta	58
Kota Bharu	49

Source:  
Ministry of Education Malaysia

#### HEALTH

##### Number of vaccine recipients completed 2 doses



Malaysia	24,987,341
W.P. Kuala Lumpur	2,961,175
Petaling	1,641,529
Johor Bahru	1,408,722
Ulu Langat	1,066,940
Klang	624,149

Source:  
Ministry of Health Malaysia  
Note:  
1. This data is based on the location of vaccination centre  
2. For those aged 5 years and above

#### WELFARE SERVICES

##### Cumulative number of registered Person With Disabilities (PWD)



Malaysia	621,248
W.P. Kuala Lumpur	44,199
Johor Bahru	22,193
Ulu Langat	17,628
Klang	17,524
Melaka Tengah	15,456

Source:  
Department of Social Welfare Malaysia

#### INTERNET AND SOCIAL MEDIA

##### Percentage of internet subscriptions at home



	(%)
Malaysia	90.3
W.P. Putrajaya, Lojing	100.0
Selangor	99.0
Petaling	98.9
Gombak, Ulu Langat	98.4
W.P. Kuala Lumpur	98.0

Note:  
Data as at 2019

#### PUBLIC SAFETY



Malaysia	1,486
W.P. Kuala Lumpur	61
Ipoh	27
Segamat	21
Ulu Selangor	20
Kuala Muda	19



Malaysia	324
W.P. Kuala Lumpur	19
Petaling	9
Johor Bahru	7
Kota Bharu, Seremban, Ulu Langat	6
Batu Pahat	5

Sources:  
Royal Malaysia Police  
Fire and Rescue Department of Malaysia

Note:  
<sup>1</sup>Refer to district police headquarters, police stations and police huts

Source : My Local Stats 2021, Department of Statistics Malaysia (DOSM)  
Note : <sup>1</sup>Refers to top five administrative districts

My Local Stats 2021, the fifth series of publications since 2017 comprises 173 publications namely one Malaysia publication, 13 states' publications, three Federal Territories' publications, and 156 publications by administrative district. The statistics are presented at the administrative district level which is much needed for inclusive national development planning.

As for population, the total population in Malaysia was estimated at 32.6 million in 2021. According to mid-year population estimates based on Population and Housing Census 2020, Petaling, Selangor was the district with the highest population at 2.32 million followed by Johor Bahru, Johor (1.72 million) dan Ulu Langat, Selangor (1.39 million).

In terms of housing, the number of living quarters recorded in 2020 was 9.61 million based on Population and Housing Census 2020. At the district level, Petaling, Selangor has the highest number of living quarters in 2020 which were 679,812 units followed by W.P. Kuala Lumpur (634,639 units) and Johor Bahru, Johor (610,314 units).

Looking at the education field, there were 10,224 schools in 2021 consisting of 7,780 primary schools and 2,444 secondary schools. The number of primary and secondary school teachers in 2021 recorded a decrease of 0.9 per cent and 2.3 per cent respectively to 235,031 teachers and 175,987 teachers.

In terms of educational facilities at the district level, W.P. Kuala Lumpur recorded the highest number of primary and secondary schools namely 190 primary schools and 104 secondary schools respectively followed by Johor Bahru, Johor (181 primary schools and 87 secondary schools) and Petaling, Selangor (148 primary schools and 77 secondary schools).

The full publication of the My Local Stats, 2021 can be downloaded through eStatistik portal.

**Released by:**  
**DEPARTMENT OF STATISTICS MALAYSIA**  
**17 NOVEMBER 2022**

**Contact person:**  
**Baharudin Mohamad**  
Public Relation Officer  
Strategic Communication and International Division  
Department of Statistics, Malaysia  
**Tel :** +603-8885 7942  
**Fax :** +603-8888 9248  
**E-mail :** baharudin[at]dosm.gov.my

**Contact person:**  
Baharudin Mohamad  
Public Relation Officer  
Strategic Communication and International Division  
Department of Statistics Malaysia  
Tel : +603-8090 4681  
Fax : +603-8888 9248  
Email : baharudin[at]dosm.gov.my

**Copyright ©2026 Department of Statistics Malaysia Official Portal. All Rights Reserved.**