



MINISTRY OF ECONOMY
DEPARTMENT OF STATISTICS MALAYSIA

MONTHLY RUBBER STATISTICS MALAYSIA, JANUARY 2017

Natural Rubber (NR) dropped by 4.1 per cent in January 2017

In January 2017, production of natural rubber dropped by **4.1** percent to **66,617** tonnes as compared to December 2016. Smallholding sector was the main contributor to the production of natural rubber which is **93.7** per cent.

Average monthly price of Latex Concentrate and Standard Malaysian Rubber 20 were **710.70** sen per kilogramme and **957.23** sen per kilogramme, increased by **15.4** per cent and **14.0** per cent respectively from the previous month.

Exports of NR in January 2017 decreased by **17.9** per cent to **50,410** tonnes as compared to December 2016. Five main destinations of NR exports were China, Germany, Iran, U.S.A. and Republic of Korea.

Meanwhile, domestic consumption of natural rubber declined by **2.5** per cent to **39,861** tonnes within the same period. The main domestic consumers of natural rubber is dominated by rubber gloves industry at **74.9** per cent.

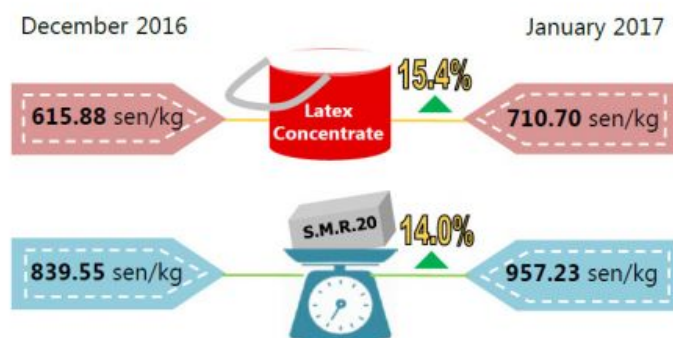
Level of NR stocks went up by **8.8** per cent to **221,376** tonnes at the end of January 2017.

Natural Rubber (NR) dropped by 4.1 per cent in January 2017

93.7% of NR production was from the smallholding sector.



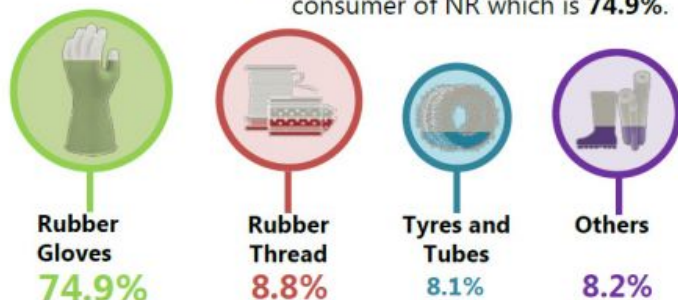
Average price



Domestic Consumption

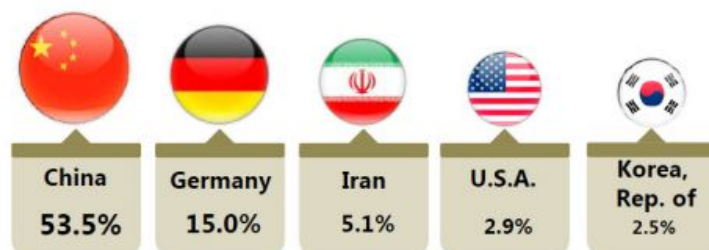
Total : 39,861 tonnes

Rubber gloves industry was the largest consumer of NR which is 74.9%.



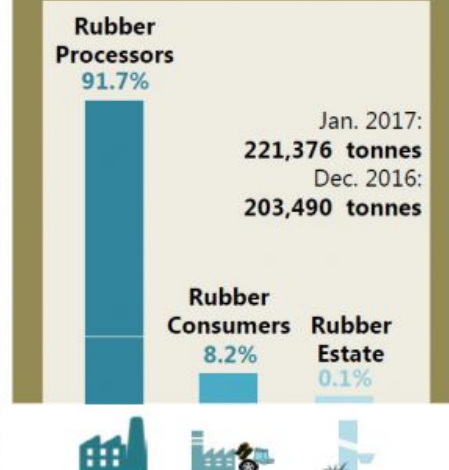
Exports

Exports of NR decreased by 17.9% as compared to December 2016. The main destination of NR exports was China.

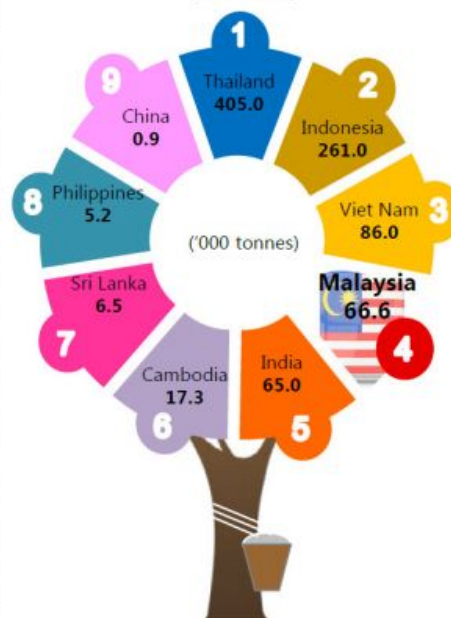


Total exports : 50,410 tonnes

Stocks



Production of NR by Association of Natural Rubber Producing Countries (ANRPC)



Source: Ministry of Plantation Industries and Commodities

Source: Monthly Rubber Statistics Malaysia, January 2017

Department of Statistics Malaysia
<https://www.dosm.gov.my>



<https://www.facebook.com/StatsMalaysia>



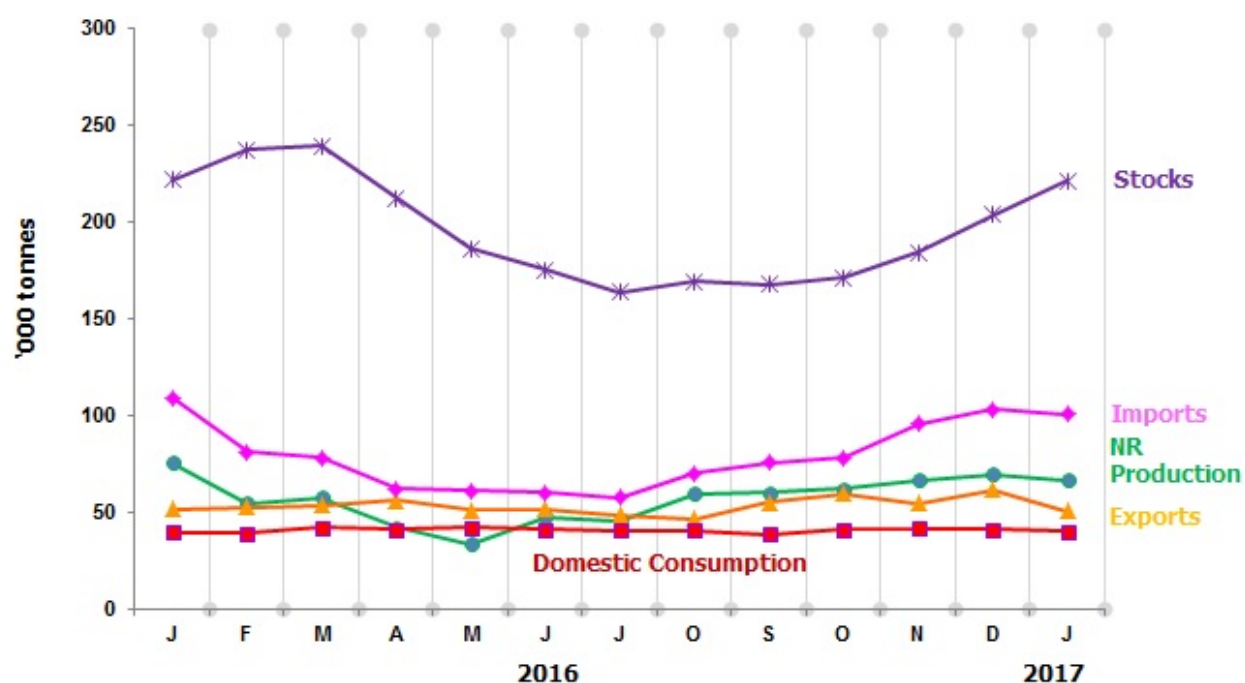
<https://twitter.com/StatsMalaysia>

Table 1 presents the principal statistics of rubber for January 2017 while Chart 1 shows the monthly time series from January 2016 to January 2017.

Table 1: Principal statistics of rubber, January 2017

Principal Statistics	January 2017	December 2016	January 2016	Change month-on-month (%)	Change year-on-year (%)
Production (tonnes)	66,617	69,435	75,448	-4.1	-11.7
Exports (tonnes)	50,410	61,380	51,503	-17.9	-2.1
Imports (tonnes)	100,488	103,125	109,244	-2.6	-8.0
Domestic consumption (tonnes)	39,861	40,873	39,530	-2.5	0.8
Closing stocks (tonnes)	221,376	203,490	221,848	8.8	-0.2
Number of paid workers (estate)	10,048	10,264	11,739	-2.1	-14.4
Salaries & wages (RM'000) (estate)	13,419	16,632	15,655	-19.3	-14.3

Chart 1: Monthly production, exports, imports, domestic consumption and stocks of natural rubber 2016/2017



*Notes:

Data for January 2017 is **provisional**. The data will be updated based on the latest available figures and subsequently published in the February 2017 publication.

Released By:

**THE OFFICE OF CHIEF STATISTICIAN MALAYSIA
DEPARTMENT OF STATISTICS, MALAYSIA
#myHariBulan# #myBulan# #myTahun#**

Contact person:

Ho Mei Kei
Public Relation Officer
Corporate and User Services Division
Department of Statistics, Malaysia
Tel : +603-8885 7942
Fax : +603-8888 9248
Email : mkho[at]stats.gov.my

Contact person:

Baharudin Mohamad
Public Relation Officer
Strategic Communication and International Division
Department of Statistics Malaysia
Tel : +603-8090 4681
Fax : +603-8888 9248
Email : baharudin[at]dosm.gov.my

Copyright ©2025 Department of Statistics Malaysia Official Portal. All Rights Reserved.