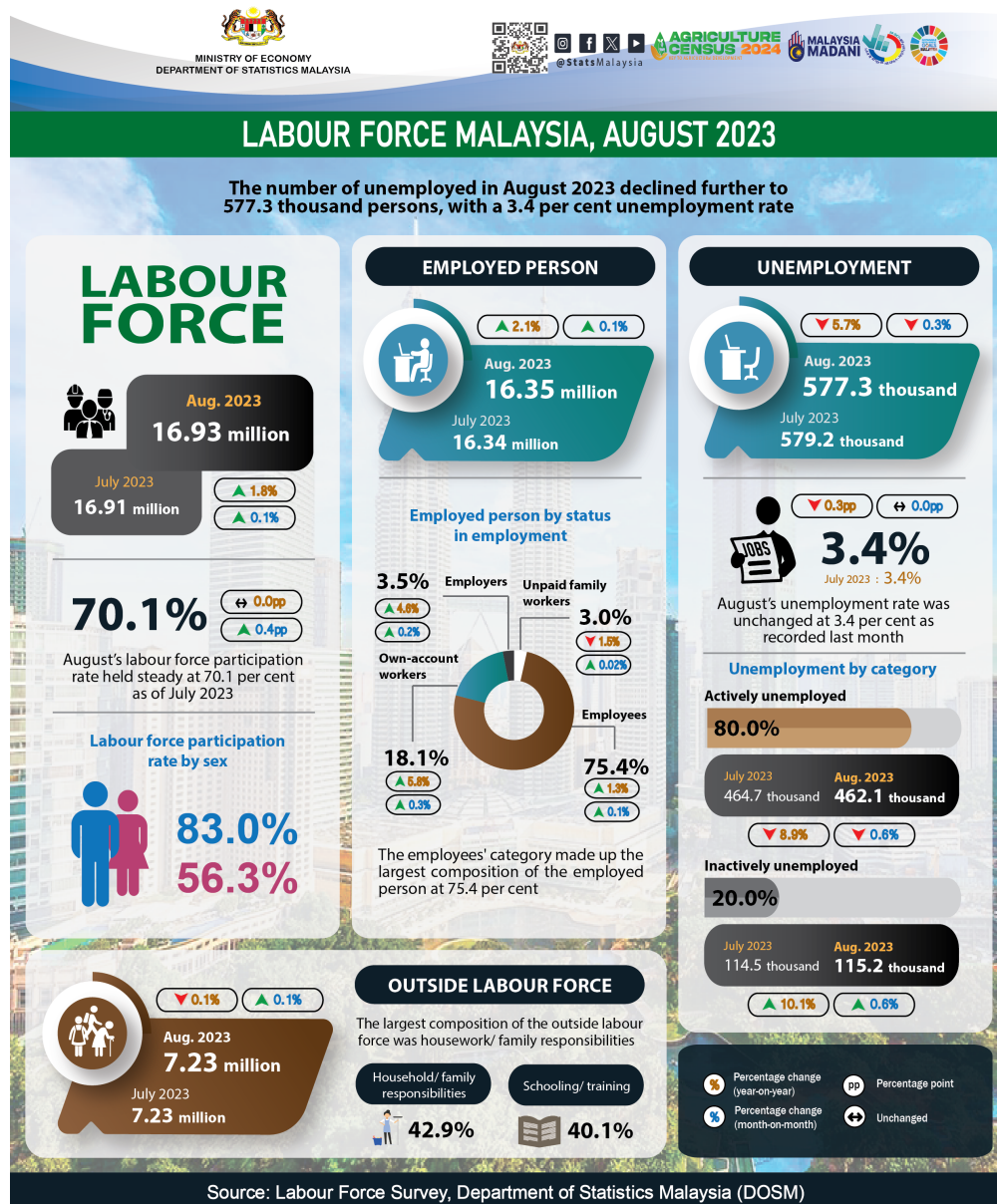




MINISTRY OF ECONOMY
DEPARTMENT OF STATISTICS MALAYSIA

MONTHLY PRINCIPAL STATISTICS OF LABOUR FORCE



- Employed persons remained on a positive trend with a month-on-month increase of 0.1 per cent or equivalent to 19.9 thousand persons to record 16.35 million persons in August 2023 (July 2023: 16.34 million persons). August's employment-to-population ratio, which indicates the ability of an economy to create employment, stood at 67.7 per cent as in the previous month.
- By economic sector, the number of employed persons in the Services sector continued its upward trend, largely in Wholesale & retail trade; Food & beverage services; and Transportation and storage activities. In addition, the Manufacturing, Agriculture, Construction as well as Mining & quarrying sectors also registered increases in the number of employed persons during the month.
- The employees' category, which made up the largest composition of employed persons at 75.4 per cent, improved by 0.1 per cent (+10.9 thousand persons) to 12.32 million persons (July 2023: 12.31 million persons). On the same note, the own-account workers also posted a rise of 7.9 thousand persons (+0.3%) to 2.97 million persons (July 2023: 2.96 million persons).
- In August 2023, the number of unemployed persons continued to trend down, registering a fall of 0.3 per cent (-1.9 thousand persons) to 577.3 thousand persons (July 2023: 579.2 thousand persons). August's unemployment rate was unchanged at 3.4 per cent as recorded last month.
- In August 2023, the labour force strengthened further by 0.1 per cent (+17.9 thousand persons) month-on-month to record 16.93 million persons (July 2023: 16.91 million persons). August's labour force participation rate (LFPR) held steady at 70.1 per cent as of July 2023.
- The number of persons outside the labour force during the month registered an addition of 6.3 thousand persons (0.1%) to 7.23 million persons (July 2023: 7.23 million persons). The largest composition of the outside labour force was due to housework/ family responsibilities with 42.9 per cent, and subsequently, 40.1 per cent by reason of schooling/ training.

The full publication of the Labour Force Report, August 2023 can be downloaded through eStatistik Portal.

Released by:

DEPARTMENT OF STATISTICS MALAYSIA
10 OCTOBER 2023

Contact person:

Baharudin Mohamad
 Public Relation Officer
 Strategic Communication and International Division
 Department of Statistics Malaysia
 Tel : +603-8090 4681
 Fax : +603-8888 9248
 Email : baharudin[at]dosm.gov.my

Copyright ©2025 Department of Statistics Malaysia Official Portal. All Rights Reserved.