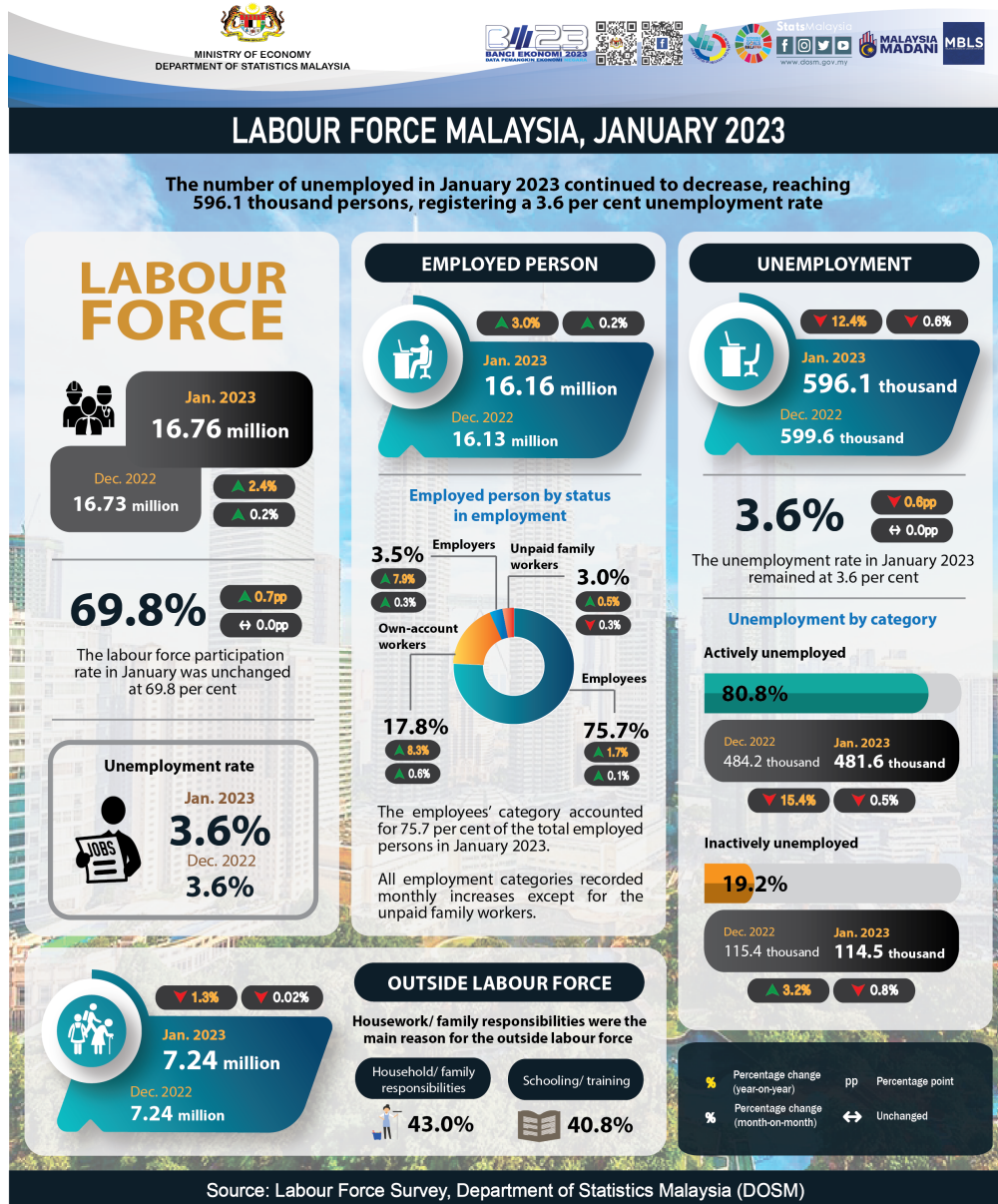
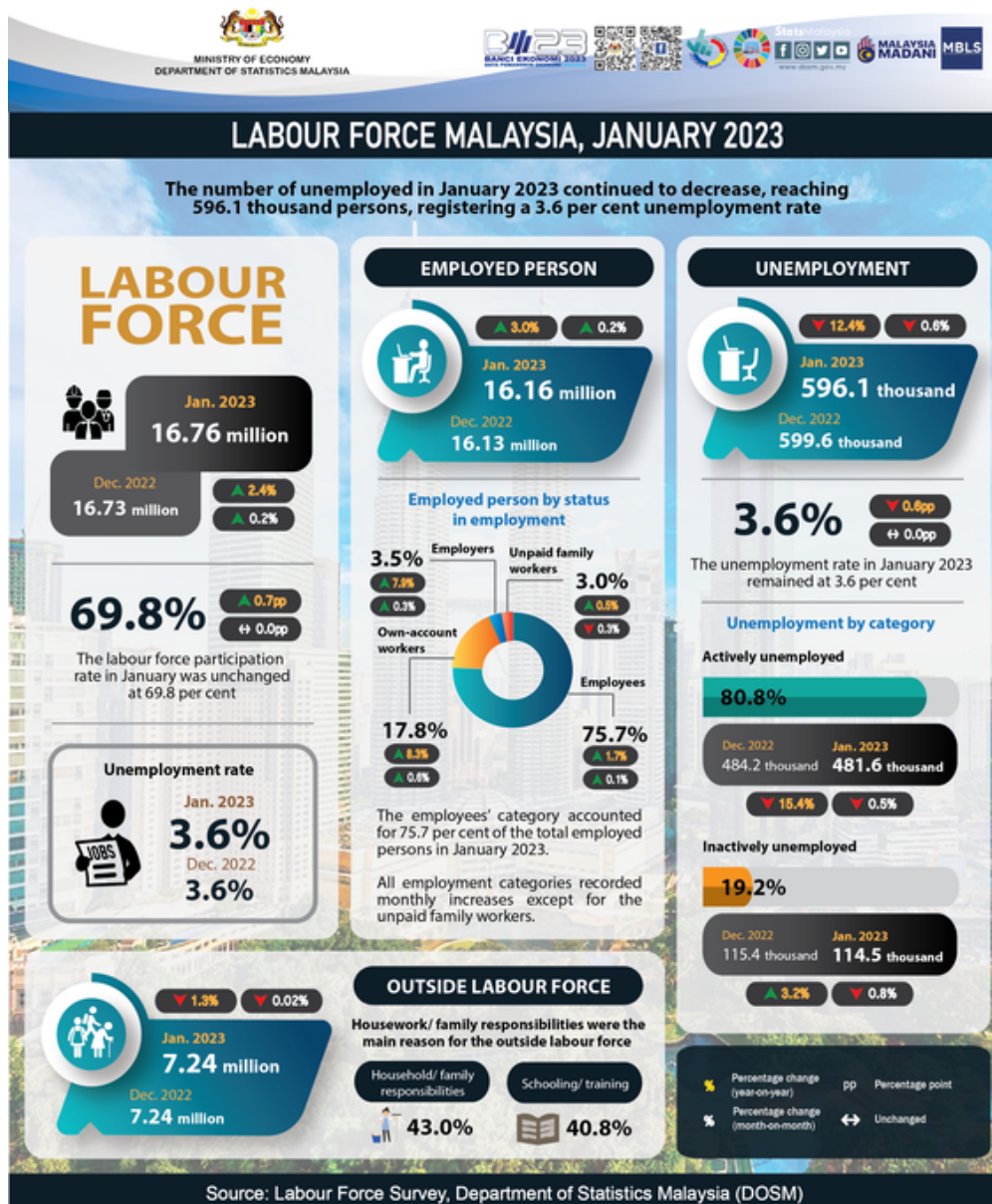




MINISTRY OF ECONOMY
DEPARTMENT OF STATISTICS MALAYSIA

MONTHLY PRINCIPAL STATISTICS OF LABOUR FORCE





- The number of employed persons in January 2023 further increased by 0.2 per cent (+28.9 thousand persons) to record 16.16 million persons (December 2022: 16.13 million persons). In January, the employment-to-population ratio, which indicates the ability of an economy to create employment, remained at 67.3 per cent.
- In terms of economic sectors, Services sector continued to register increases in the number of employed persons, largely in Wholesale & retail trade; Food & beverage services; and Administrative & support service activities. Similar trend of employment was also observed in the Manufacturing, Construction and Mining & quarrying sectors, as well as in the Agriculture sector.
- The employees' category accounted for 75.7 per cent of the total employed persons in January 2023. As compared to the previous month, this category recorded a marginal increase of 0.1 per cent (+11.8 thousand persons), reaching a total of 12.24 million persons (December 2022: 12.23 million persons). A similar trend was also observed in the own-account workers, with an increase of 0.6 per cent (+16.9 thousand persons) to record 2.88 million persons (December 2022: 2.86 million persons).
- The number of unemployed persons declined further in January 2023 to record 596.1 thousand persons, reduced by 0.6 per cent (-3.5 thousand persons) as against 599.6 thousand persons in

December 2022. The unemployment rate during the month remained at 3.6 per cent.

- The number of labour force improved further in January 2023, increased by 0.2 per cent or 25.4 thousand persons to record 16.76 million persons (December 2022: 16.73 million persons). The labour force participation rate (LFPR) in January was unchanged at 69.8 per cent.
- In January 2023, the number of persons outside the labour force posted a decline of 1.2 thousand persons (-0.02%) to 7.24 million persons (December 2022: 7.24 million persons). Housework/ family responsibilities were the main reason for the outside labour force with a contribution share of 43.0 per cent, followed by schooling/ training with 40.8 per cent.

Contact person:

Baharudin Mohamad

Public Relation Officer

Strategic Communication and International Division

Department of Statistics Malaysia

Tel : +603-8090 4681

Fax : +603-8888 9248

Email : baharudin[at]dosm.gov.my

Copyright ©2025 Department of Statistics Malaysia Official Portal. All Rights Reserved.