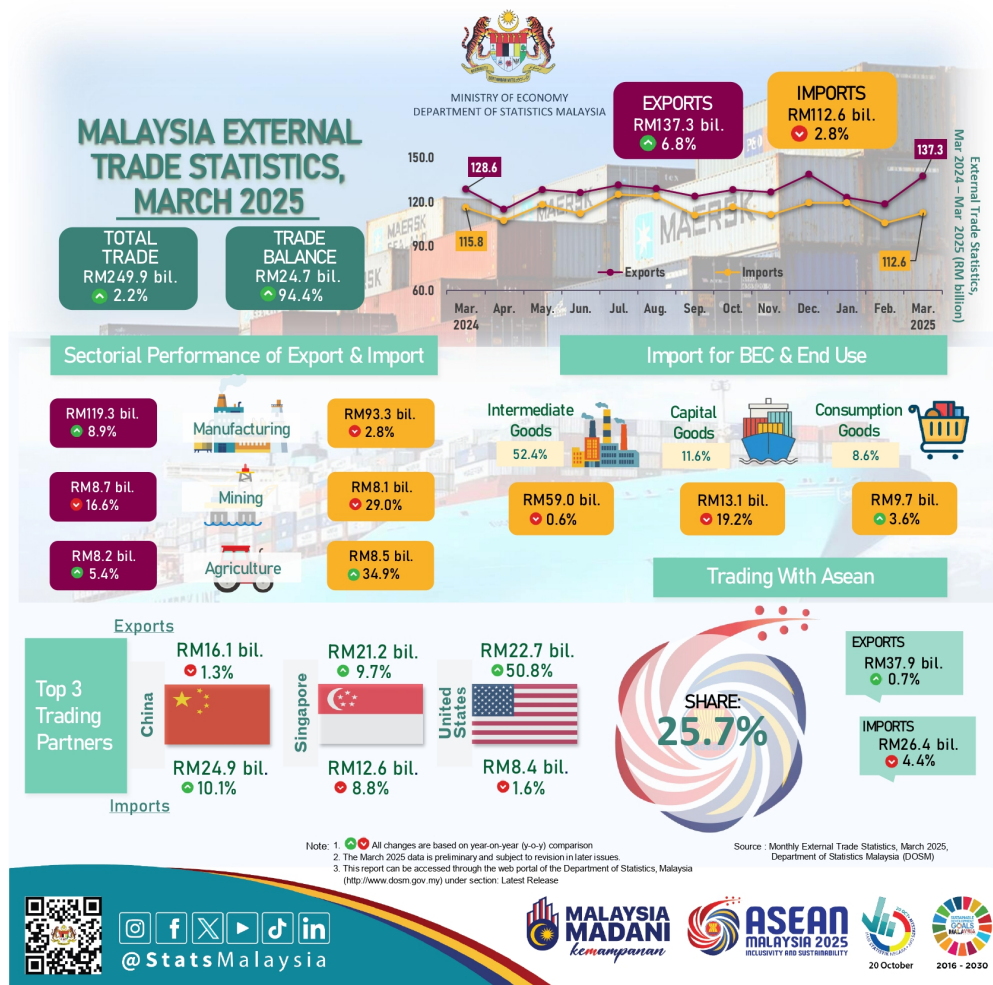




MINISTRY OF ECONOMY  
DEPARTMENT OF STATISTICS MALAYSIA

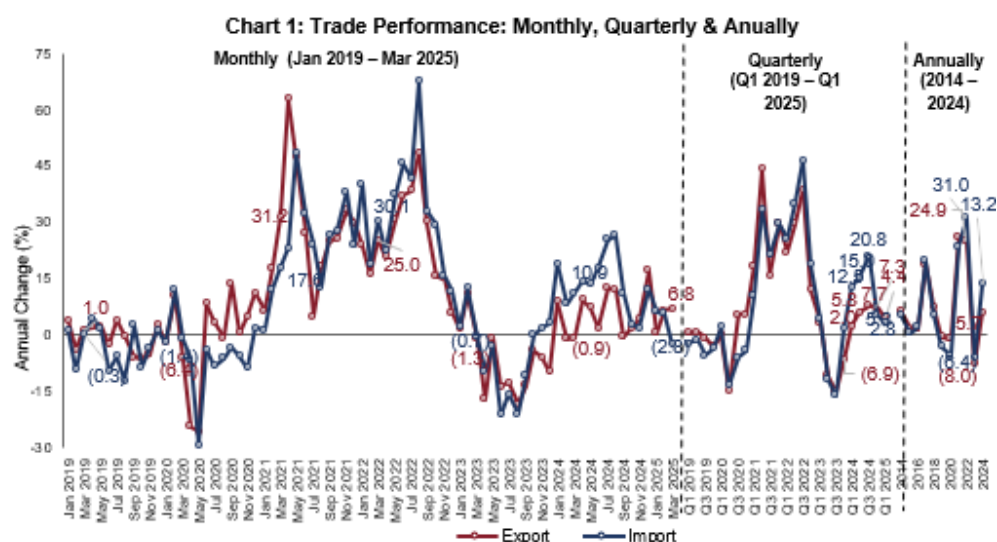
MONTHLY EXTERNAL TRADE STATISTICS, MARCH 2025



Malaysia's total trade demonstrated consistent performance in March 2025, recording a growth of 2.2 per cent or RM5.5 billion reaching RM249.9 billion compared to RM244.4 billion in the same month of the previous year. This performance was primarily attributed to an increase of 6.8 per cent or RM8.7 billion, in exports and 12.1 per cent or RM2.9 billion, in re-exports. The respective values of exports and re-exports amounted to RM137.3 billion and RM27.4 billion.

In addition, the trade balance continued to show a surplus of RM24.7 billion, reflecting a growth of 94.4 per cent compared to RM12.7 billion in the same month of the preceding year.

When compared to the previous month, exports, imports, and total trade rose by 16.1 per cent, 6.6 per cent, and 11.6 per cent, respectively. However, the trade balance exhibited substantial growth of 96.0 per cent, or RM12.1 billion, compared to February 2025.



## Performance of Exports

Malaysia's exports rose 6.8 per cent in March 2025 compared to the same month in 2024, corresponded with the increases in both domestic exports and re-exports. Domestic exports, which represented 80.0 per cent of total exports, posted an increase of 5.6 per cent from RM104.1 billion to RM109.9 billion. Meanwhile, re-exports worth RM27.4 billion, accounting for 20.0 per cent of total exports, grew by 12.1 per cent from RM24.4 billion as compared to the previous year.

Meanwhile, the month-on-month comparison indicated exports rose by 16.1 per cent or RM19.1 billion. However, based on a month-on-month (m-o-m) seasonally adjusted terms analysis, exports decreased 2.3 per cent to RM130.2 billion.

Chart 2: Domestic Exports, Re-Exports (RM billion) and Annual Change (%)

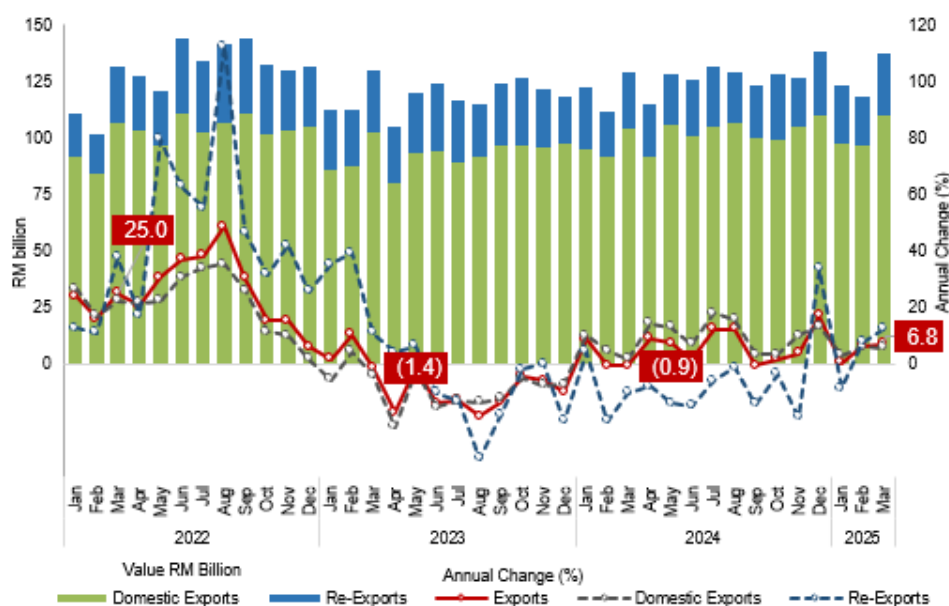


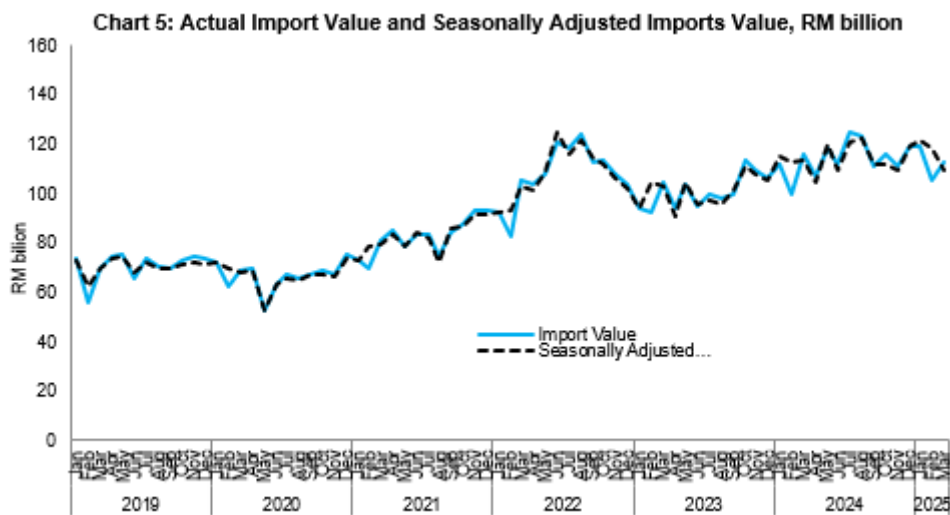
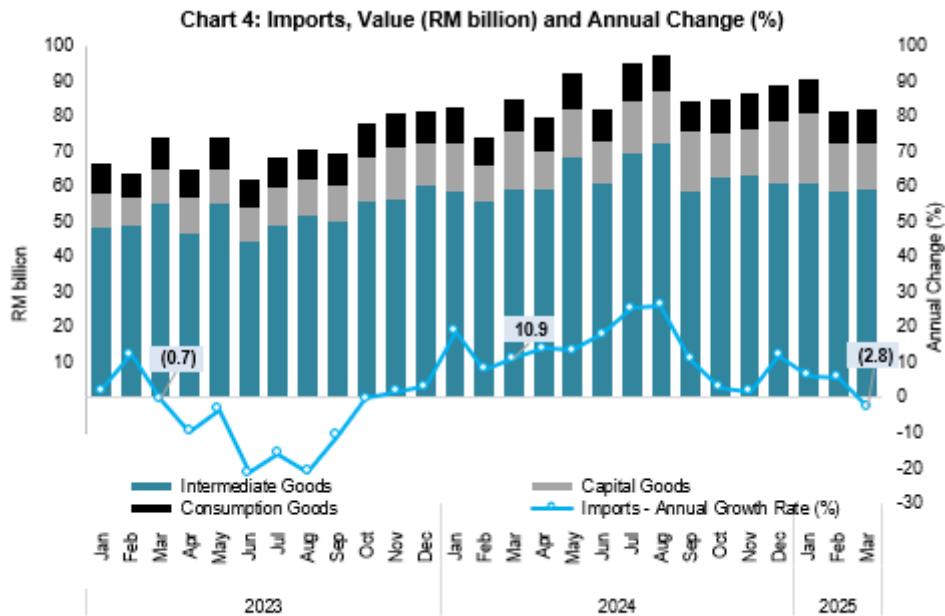
Chart 3: Actual Export Value and Seasonally Adjusted Export Value, RM billion



## Performance of Imports

Malaysia's import value declined by RM3.3 billion or 2.8 per cent in March 2025. This decrease brought the total import to RM112.6 billion from RM115.8 billion recorded in the same month the previous year. However, a monthly comparison shows that imports increased by 6.6 per cent compared to the previous month.

Referring to the analysis in seasonally adjusted terms m-o-m, imports declined 7.4 per cent to RM109.8 billion. On a y-o-y basis, imports by end use recorded a decrease in imports of capital goods of 19.2 per cent to RM13.1 billion and intermediate goods of 0.6 per cent to RM59.0 billion. Meanwhile, consumption goods experienced a growth of 3.6 per cent to RM9.7 billion.



**Contact person:**

Baharudin Mohamad  
Public Relation Officer  
Strategic Communication and International Division  
Department of Statistics Malaysia  
Tel : +603-8090 4681  
Fax : +603-8888 9248  
Email : baharudin[at]dosm.gov.my

**Copyright ©2025 Department of Statistics Malaysia Official Portal. All Rights Reserved.**