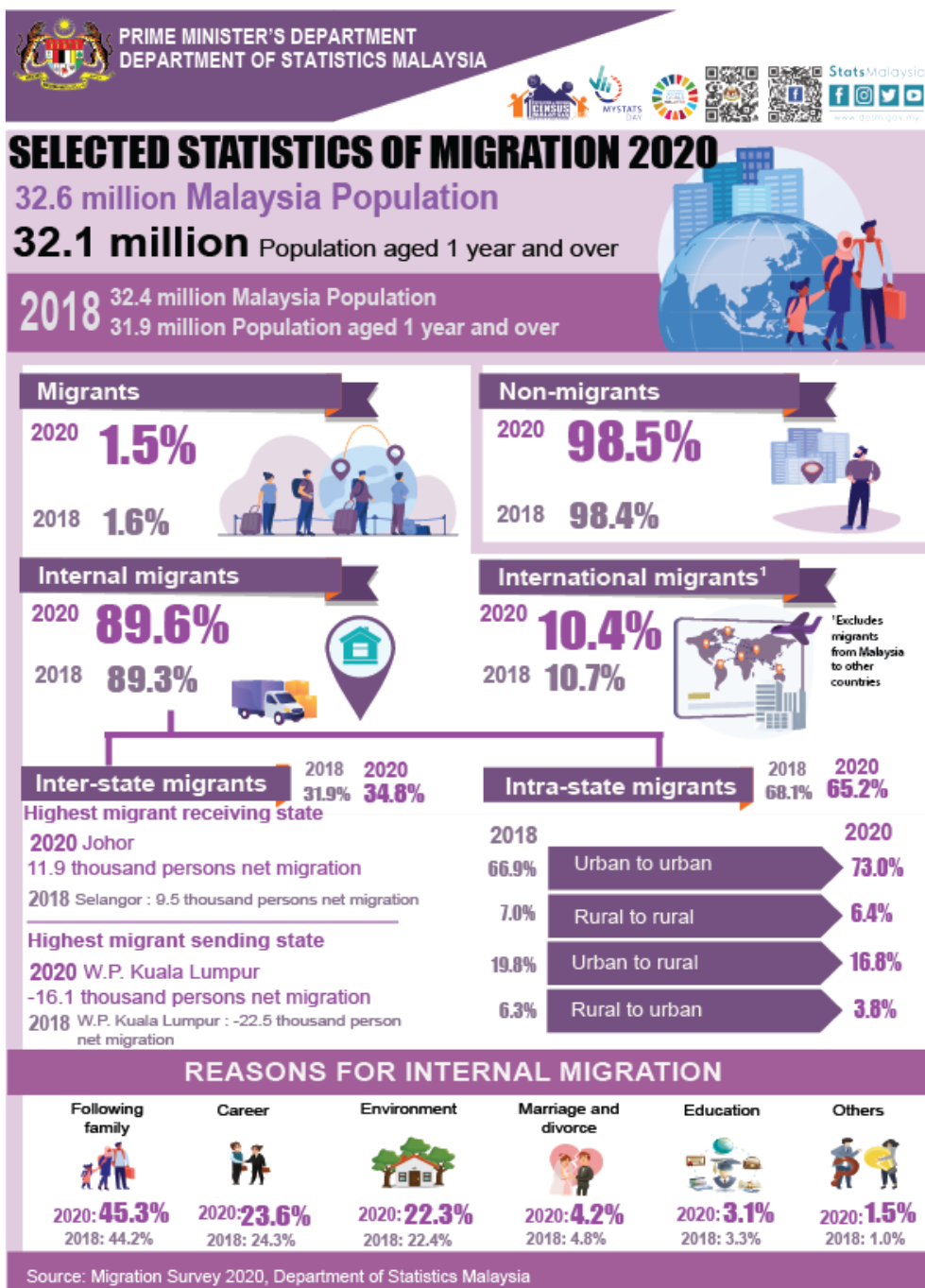




MINISTRY OF ECONOMY  
DEPARTMENT OF STATISTICS MALAYSIA

MIGRATION SURVEY REPORT, MALAYSIA, 2020



## INTRODUCTION

This report presents statistics on migration based on the Migration Survey 2020. The coverage of this survey is population aged one year and over. One-year reference period was used to obtain information related to population movements and flow at state level. The main indicators presented are population by migration status, internal migration flow, reasons for migration as well as demographic and socioeconomic characteristics of internal migrants such as sex, age group, ethnic group, marital status, educational attainment, strata, occupation and industry.

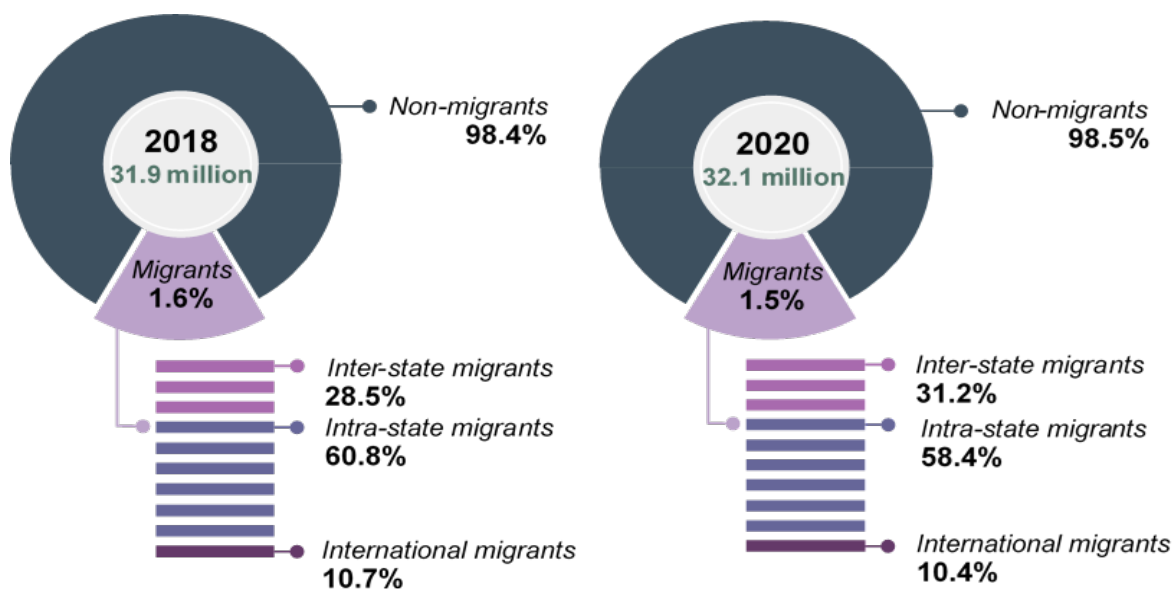
**The migration rate decreased by 0.1 percentage points to 1.5 per cent in 2020 as compared to 1.6 per cent in 2018.**

The population aged 1 year and over who has migrated in 2020 decreased by 40.0 thousand persons to 484.1 thousand persons as compared to 524.1 thousand persons in 2018. The migration rate decreased by 0.1 percentage points to 1.5 per cent in 2020 as compared to 1.6 per cent in 2018

Intra-state migrants in 2020 recorded a decrease of 2.4 percentage points as compared to 60.8 per cent in 2018. On the other hand, inter-state migrants showed an increase of 2.7 percentage points to 31.2 per cent in 2020 from 28.5 per cent in 2018.

Meanwhile, international migrants from abroad to Malaysia was 10.4 per cent, declined by 0.3 percentage points from 10.7 per cent in 2018. [Chart 1]

**Chart 1: Population aged one year and over by migration status, Malaysia, 2017-2018 and 2019-2020**



## INTERNAL MIGRATION FLOWS

### Inter-State Migration: Net Migration

In 2020, net migration recorded Johor as the main state receiving migrants, increased from 2.6 thousand persons to 11.9 thousand persons as compared to 9.3 thousand persons in 2018. Meanwhile, W.P.Kuala Lumpur remained as the main state sending migrants with the number decreasing from 22.5 thousand persons to 16.1 thousand persons. [Chart 2]

**Chart 2: Net migration by state, Malaysia, 2017-2018 and 2019-2020**

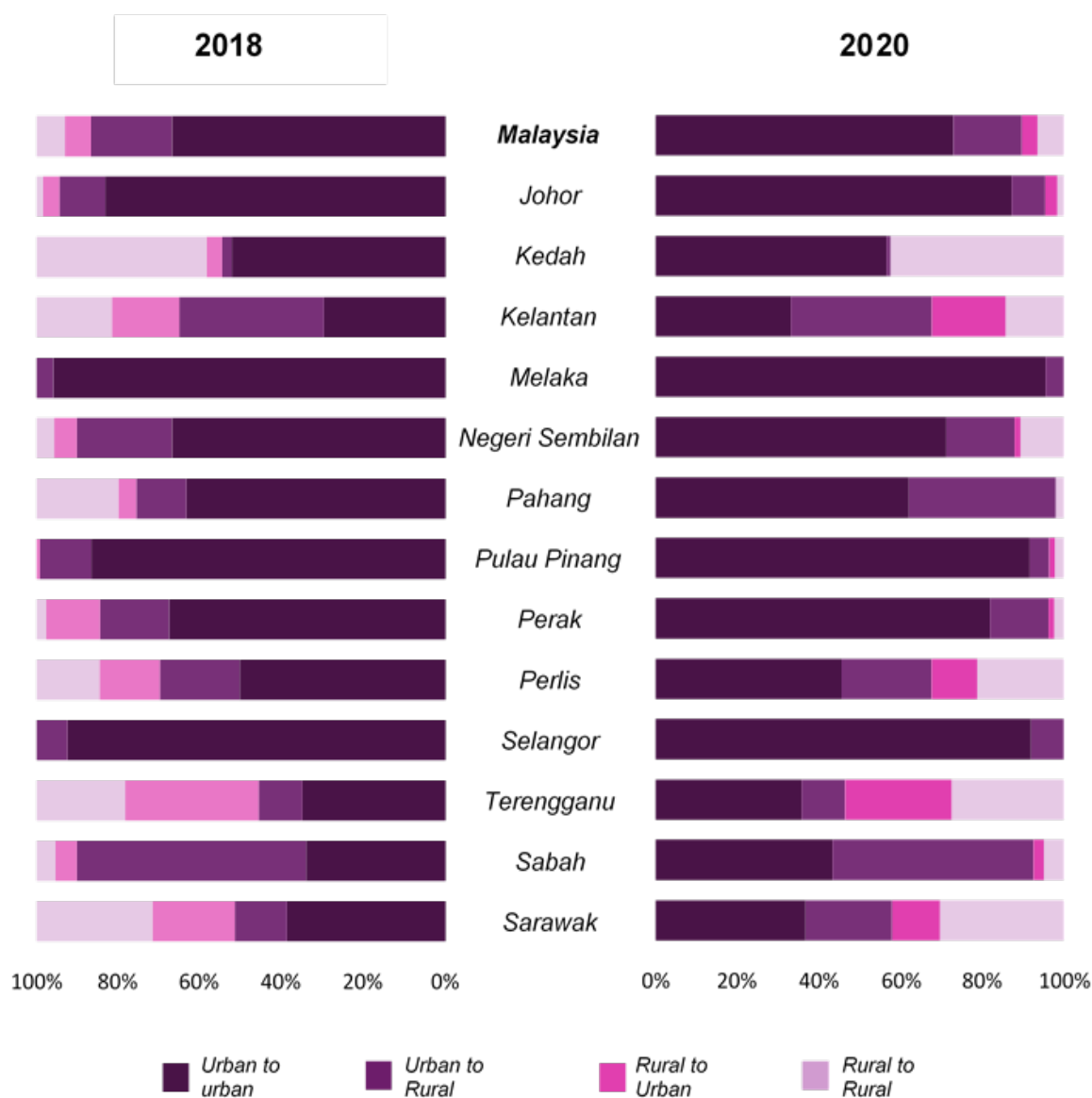


## Intra-State Migration

The highest percentage distribution of intra-state migrants in Malaysia was urban to urban, increasing 6.1 percentage points to 73.0 per cent in 2020 as compared to 66.9 per cent in 2018. The trend is in line with urbanisation in Malaysia which estimated to be 76.7 per cent.

All states showed the highest movement from urban to urban except for Kelantan and Sabah which recorded the highest movement from urban to rural. [Chart 3]

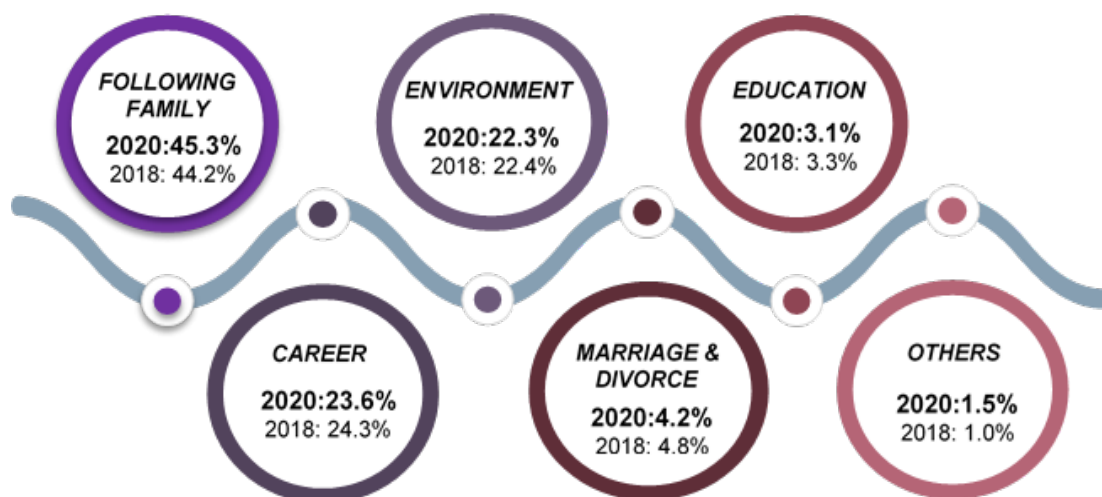
**Chart 3: Intra-state migrants by migration flows (strata), Malaysia, 2017-2018 and 2019-2020**



## REASONS FOR MIGRATION

In 2020, internal migration due to following family remained as the main reason for migration at 45.3 per cent as compared to 44.2 per cent in 2018. This was followed by career (23.6%) and environment (22.3%). [Exhibit 1]

**Exhibit 1: Internal migrants by reasons for migration, Malaysia, 2017-2018 and 2019-2020**



The detailed information regarding this report can be accessed through [eStatistik](#) application in the portal of [Department of Statistics Malaysia](#).

### Released By:

**DATO' SRI DR. MOHD UZIR MAHIDIN**  
**CHIEF STATISTICIAN MALAYSIA**  
**DEPARTMENT OF STATISTICS, MALAYSIA**

[DrUzir\\_Mahidin](#) [Dr\\_Uzir](#)

**#myHariBulan# #myBulan# #myTahun#**

### Contact person:

Mohd Yusrizal bin Ab. Razak  
Public Relation Officer  
Strategic Communication and International Division  
Department of Statistics, Malaysia  
Tel : +603-8885 7942  
Fax : +603-8888 9248  
E-mail : [yusrizal.razak\[at\]dosm.gov.my](mailto:yusrizal.razak[at]dosm.gov.my)

**Contact person:**

Baharudin Mohamad

Public Relation Officer

Strategic Communication and International Division

Department of Statistics Malaysia

Tel : +603-8090 4681

Fax : +603-8888 9248

Email : baharudin[at]dosm.gov.my

**Copyright ©2025 Department of Statistics Malaysia Official Portal. All Rights Reserved.**