



MINISTRY OF ECONOMY  
DEPARTMENT OF STATISTICS MALAYSIA

---

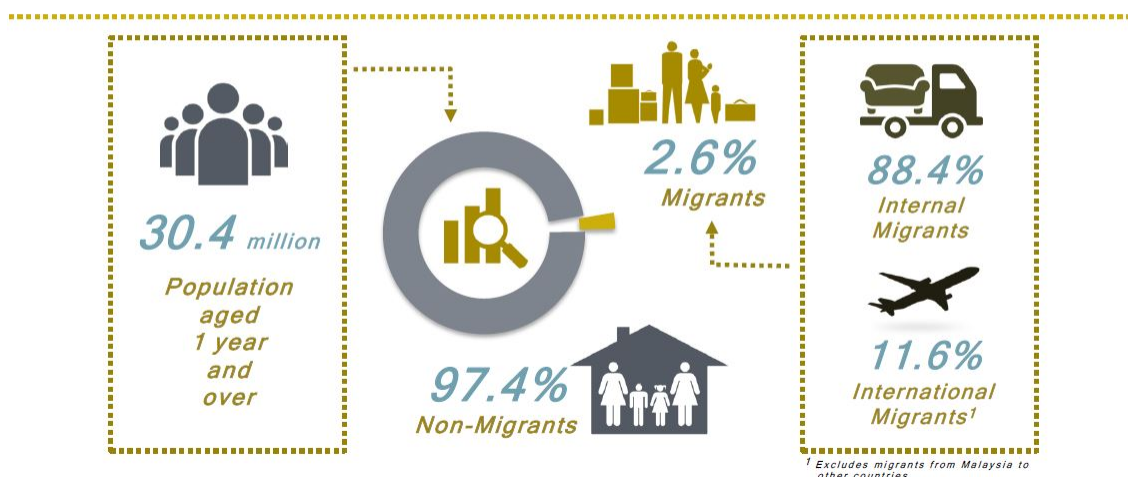
## MIGRATION SURVEY REPORT, MALAYSIA, 2015

---

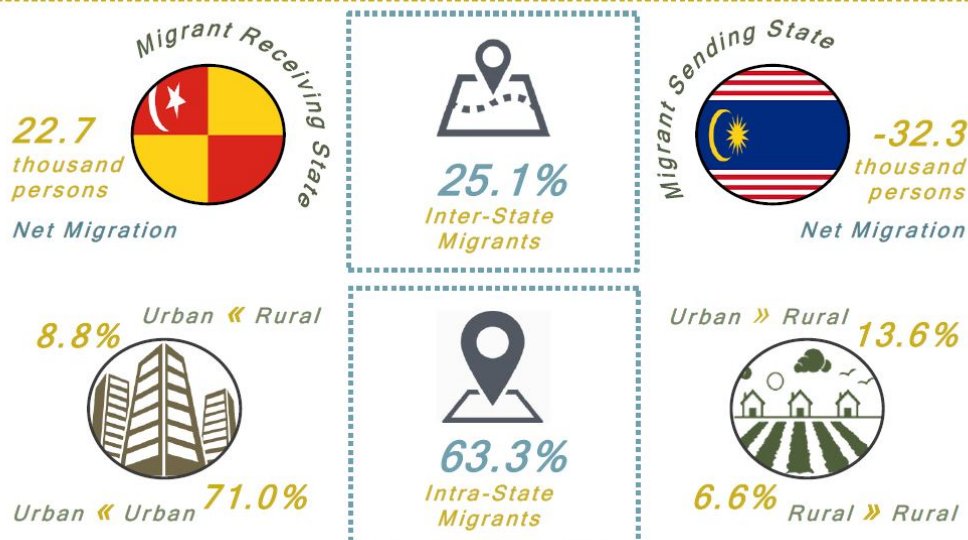
### POPULATION'S MIGRATION IN MALAYSIA

For the period of 2014–2015, 2.6 per cent of the population aged 1 year and over were migrants. Nearly two-thirds or 63.3 per cent of the total number of migrants were intra-state migrants and inter-state migrants were 25.1 per cent. This indicates that migrants would rather move within the state instead of moving to another state. Meanwhile, international migrants who have moved from abroad to Malaysia were 11.6 per cent.

### POPULATION'S MIGRATION IN MALAYSIA 2014–2015



## INTERNAL MIGRATION



For inter-state movement, Selangor was the main receiving state of migrants while the main sending state of migrants was W.P. Kuala Lumpur. For intra-state movement, the majority of migrants at state level were also focused to urban areas within the same state for the period of 2014–2015.

<sup>1</sup>Excludes migrants from Malaysia to other countries

## REASONS FOR MIGRATION

Moved to 'follow family' was a major factor of population's migration with a percentage exceeding 40.0 per cent for both periods. Besides, 'environment' and 'career' factors were also the main reasons for migration with the percentage of each exceeding 20.0 per cent.

## REASONS FOR MIGRATION



The detailed information regarding this report can be accessed through [eStatistik](#) application in the portal of [Department of Statistics Malaysia](#).

Released By:

**THE OFFICE OF CHIEF STATISTICIAN MALAYSIA**  
**DEPARTMENT OF STATISTICS, MALAYSIA**  
**#myHariBulan# #myBulan# #myTahun#**

Contact person:

Ho Mei Kei  
Public Relation Officer  
Corporate and User Services Division  
Department of Statistics, Malaysia  
**Tel** : +603-8885 7942  
**Fax** : +603-8888 9248  
**Email** : mkho[at]stats.gov.my

**Contact person:**

Baharudin Mohamad  
Public Relation Officer  
Strategic Communication and International Division  
Department of Statistics Malaysia  
Tel : +603-8090 4681  
Fax : +603-8888 9248  
Email : baharudin[at]dosm.gov.my

**Copyright ©2026 Department of Statistics Malaysia Official Portal. All Rights Reserved.**