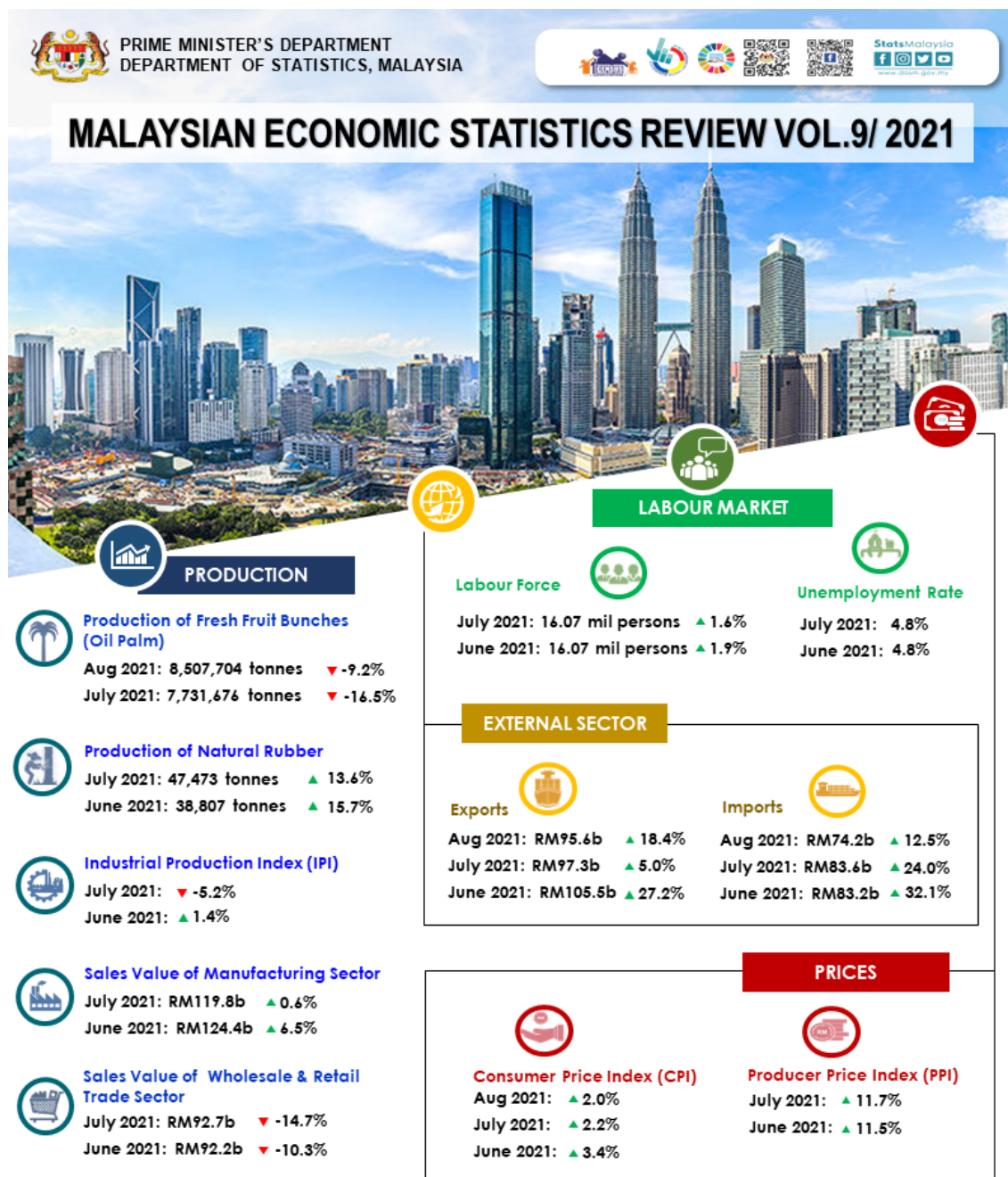




MINISTRY OF ECONOMY
DEPARTMENT OF STATISTICS MALAYSIA

MALAYSIAN ECONOMIC STATISTICS REVIEW (MESR), VOLUME 9/2021



"Slowdown in the nation's main economic activities in July 2021, however, brighter economic foresight is anticipated by end of 2021"

Malaysian Economic Statistics Review (MESR) Volume 9/2021 provides a detailed analysis based on Malaysia's recent key economic performance statistics for July 2021. This release is also complemented with two box articles, namely **"Case Study of Domestic Water Consumption Behaviour in Peninsular Malaysia - Before and During Pandemic, 2015 - 2020"** and **"Impact of Movement Control Order (MCO): Perspective of Tourism Related Industries at the State Level"**. The former highlights the trend of water consumption by states in Peninsular Malaysia over six years, 2015-2020 while the latter studies the impact of travel restrictions towards the state's tourism-related industries and observes the relationship between the effects of average per capita expenditure by international tourists on tourism-related industries in Sabah and Sarawak.

This MESR will assist users to have the latest information on the economic performance in detail.

The full publication of **MESR Volume 9/2021** can be downloaded through [eStatistik](#) portal.

Released By:

DATO' SRI DR. MOHD UZIR MAHIDIN
CHIEF STATISTICIAN MALAYSIA
DEPARTMENT OF STATISTICS, MALAYSIA

 [DrUzir_Mahidin](#)  [Dr_Uzir](#) 

#myHariBulan# #myBulan# #myTahun#

Contact person:

Mohd Yusrizal Ab Razak

Public Relation Officer
Strategic Communication and International Division
Department of Statistics, Malaysia
Tel : +603-8885 7942
Fax : +603-8888 9248
Email : yusrizal.razak[at]dosm.gov.my

Contact person:

Baharudin Mohamad
Public Relation Officer
Strategic Communication and International Division
Department of Statistics Malaysia
Tel : +603-8090 4681
Fax : +603-8888 9248
Email : baharudin[at]dosm.gov.my

Copyright ©2025 Department of Statistics Malaysia Official Portal. All Rights Reserved.