



MINISTRY OF ECONOMY  
DEPARTMENT OF STATISTICS MALAYSIA

---

## MALAYSIA EXTERNAL TRADE INDICES FEBRUARY 2015

---

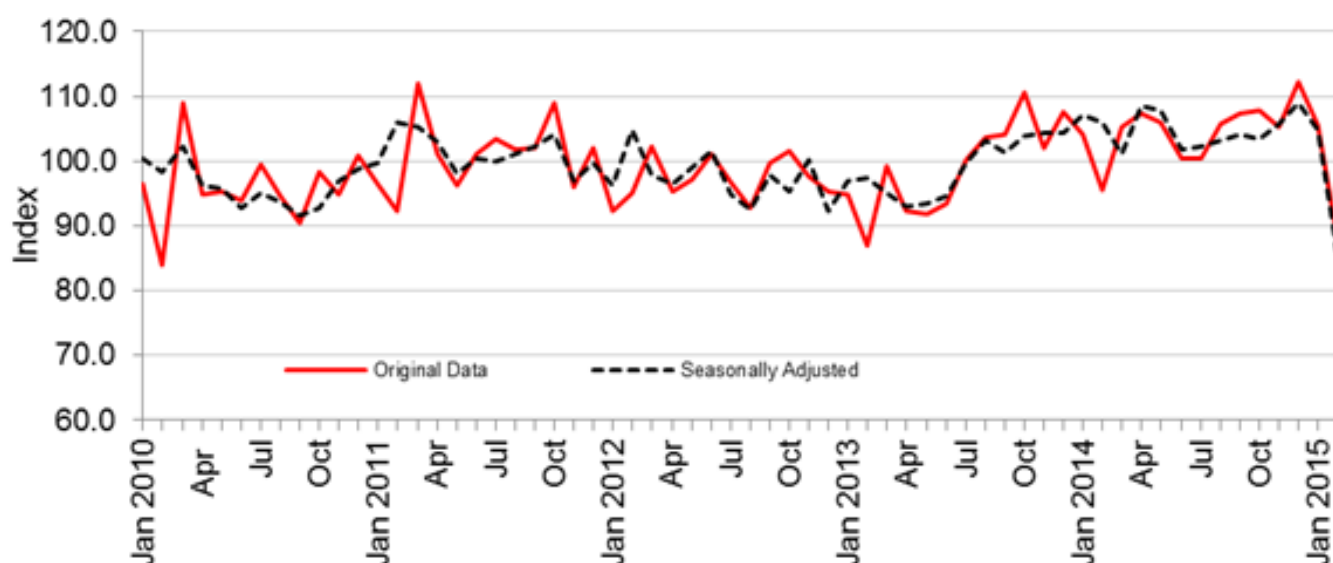
### **MONTH-ON-MONTH COMPARISON:**

#### **Exports**

In February 2015, Malaysia's export value recorded a decline of 16.4% to RM53.2 billion where the export volume index decreased 16.5% to 88.1 points. This was led by inedible crude materials (-21.4%), manufactured goods (-21.2%), miscellaneous manufactured articles (-20.2%) and machinery & transport equipment (-16.3%).

In contrast, the export unit value index rose 0.1% to 136.4 points. This was mainly contributed by chemicals (+1.3%), animal & vegetable oils & fats (+0.4%) and machinery & transport equipment (+0.3%).

***Export Volume Indices - Original Data & Seasonally Adjusted***



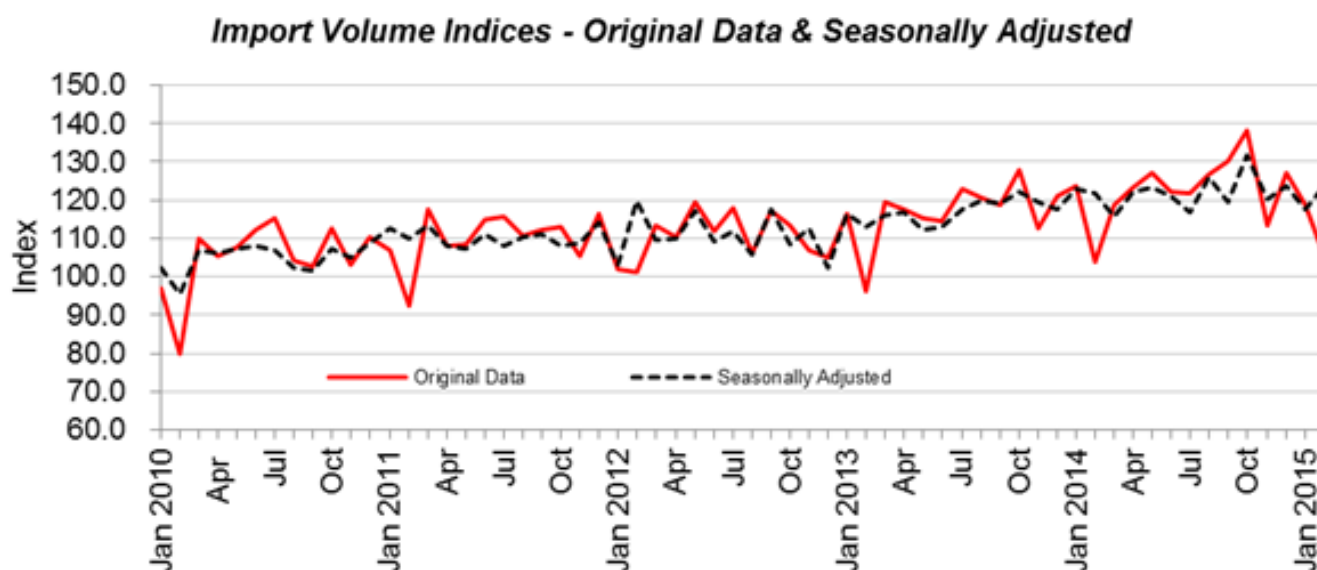
#### **Seasonally adjusted figure**

In seasonally adjusted terms, the export volume index decreased 18.1% to 85.7 points.

#### **Imports**

In February 2015, Malaysia's total import value registered a reduction of 11.0% to RM48.6 billion where the import volume index dropped 11.1% to 105.5 points. This was mainly attributed to manufactured goods (-27.8%), miscellaneous manufactured articles (-19.3%) and machinery & transport equipment (-14.9%).

In contrast, the import unit value index rose 0.1% to 129.5 points which was led by food (+0.5%), machinery & transport equipment (+0.4%) and miscellaneous manufactured articles (+0.3%).



### Seasonally adjusted figure

In seasonally adjusted terms, the import volume index in February 2015 increased 5.3% to 123.8 points.

## YEAR-ON-YEAR COMPARISON:

### Exports

Malaysia's export value decreased 9.7% from RM58.9 billion where the export volume index decreased 7.8% from 95.5 points, year-on-year basis. The decrease was mainly due to animal & vegetable oils & fats (-22.7%), manufactured goods (-20.4%) and inedible crude materials (-13.1%).

Similarly, the export unit value index registered a decrease of 2.2% from 139.4 points which was led by mineral fuels (-18.7%), animal & vegetable oils & fats (-8.9%) and inedible crude materials (-8.2%).

### Imports

In February 2015, the import value posted an expansion of 0.4% from RM48.5 billion where the import volume index increased 1.8% from 103.7 points. The increase was mainly due to manufactured goods (+7.5%), inedible crude material (+3.8%) and miscellaneous manufactured articles (+1.7%)

Meanwhile, the import unit value index decreased 1.5% from 131.4 points. This was attributed to mineral fuels (-19.9%) and chemicals (-0.1%).

## TERMS OF TRADE

In February 2015, Malaysia's terms of trade decreased marginally by 0.04% to 105.3 points when compared with January 2015. The decrease was mainly registered in inedible crude materials (-1.3%), mineral fuels (-0.6%) and machinery & transport equipment (-0.1%).

On a year-on-year basis, Malaysia's terms of trade registered a reduction of 0.7% from 106.1 points. The reduction was mainly recorded in inedible crude materials (-8.1%) followed by animal & vegetable oils & fats (-0.6%) and manufactured goods (-0.5%).

**\*Notes:**

The February 2015 data is provisional and subject to revision in later issues.

**Released By:**

**THE OFFICE OF CHIEF STATISTICIAN MALAYSIA**  
**DEPARTMENT OF STATISTICS, MALAYSIA**  
**3 APRIL 2015**

**Contact person:**

Norrita binti Amran  
Public Relation Officer  
Corporate and User Services Division  
Department of Statistics, Malaysia  
**Tel** : +603-8885 7942  
**Fax** : +603-8888 9248  
**Email** : norrita.amran@stats.gov.my

**Contact person:**

Baharudin Mohamad  
Public Relation Officer  
Strategic Communication and International Division  
Department of Statistics Malaysia  
Tel : +603-8090 4681  
Fax : +603-8888 9248  
Email : baharudin[at]dosm.gov.my

**Copyright ©2025 Department of Statistics Malaysia Official Portal. All Rights Reserved.**