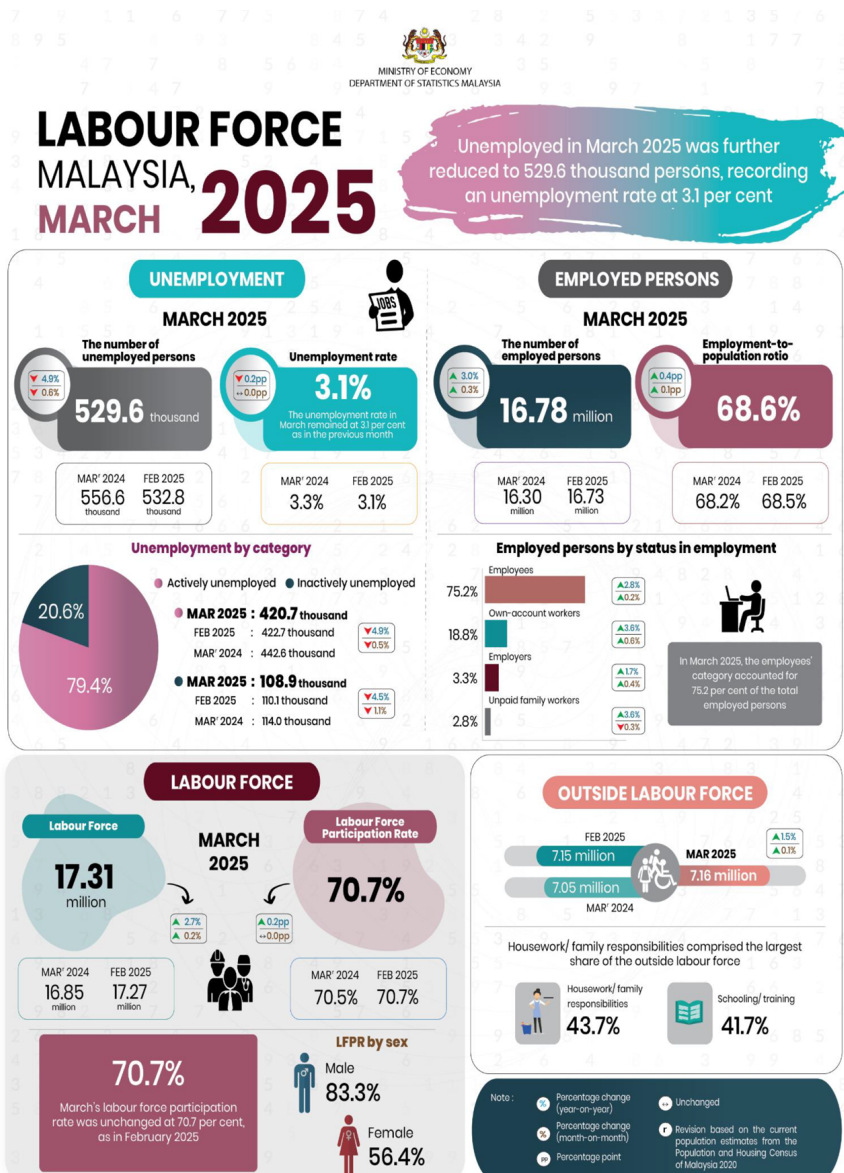




MINISTRY OF ECONOMY  
DEPARTMENT OF STATISTICS MALAYSIA

LABOUR FORCE STATISTICS, MARCH 2025



- In March 2025, the number of **employed persons** further increased, with a rise of **0.3 per cent (+44.5 thousand persons)** to **16.78 million persons** compared to 16.73 million persons in February 2025. The **employment-to-population ratio**, which indicates the ability of an economy to create employment, went up by **0.1 percentage points** to **68.6 per cent** in March 2025 (February 2025: 68.5%).
- Most of the employed persons were primarily concentrated in the Services sector, particularly in Accommodation and food & beverage services; Information & communication; and Professional scientific & technical activities. An increasing number of employed persons has also been seen in the Manufacturing, Construction, Agriculture, and Mining & quarrying sectors.
- In March 2025, the **employees'** category accounted for **75.2 per cent** of the total employed persons, continued expanding by **0.2 per cent (+25.1 thousand persons)** to **12.61 million persons** (February 2025: 12.59 million persons). Likewise, the number of **own-account workers** also rose by **0.6 per cent (+18.4 thousand persons)** to **3.15 million persons** (February 2025: 3.13 million persons).
- The number of **unemployed** continued to decrease during the month, with a reduction of **3.2 thousand persons (-0.6%)** to **529.6 thousand persons** (February 2025: 532.8 thousand persons). The **unemployment rate** in March remained at **3.1 per cent** as in the previous month.
- The number of **labour force** in March 2025 maintained its positive trend, rose by **0.2 per cent (+41.2 thousand persons)** to reach **17.31 million persons** (February 2025: 17.27 million persons). March's **labour force participation rate (LFPR)** was unchanged at **70.7 per cent**, as in February 2025.
- In March 2025, the number of persons **outside the labour force** increased by **0.1 per cent (+5.0 thousand persons)** to **7.16 million persons** (February 2025: 7.15 million persons). **Housework/family responsibilities** comprised the largest share of the total outside labour force at **43.7 per cent**, while **schooling/ training** reasons ranked second at **41.7 per cent**.

The full publication of the Labour Force Survey Report, March 2025 can be downloaded through eStatistic Portal.

**Released by:**

**DEPARTMENT OF STATISTICS MALAYSIA**

**09 May 2025**

**Contact person:**

Baharudin Mohamad

Public Relation Officer

Strategic Communication and International Division

Department of Statistics Malaysia

Tel : +603-8090 4681

Fax : +603-8888 9248

Email : baharudin[at]dosm.gov.my

**Copyright ©2025 Department of Statistics Malaysia Official Portal. All Rights Reserved.**