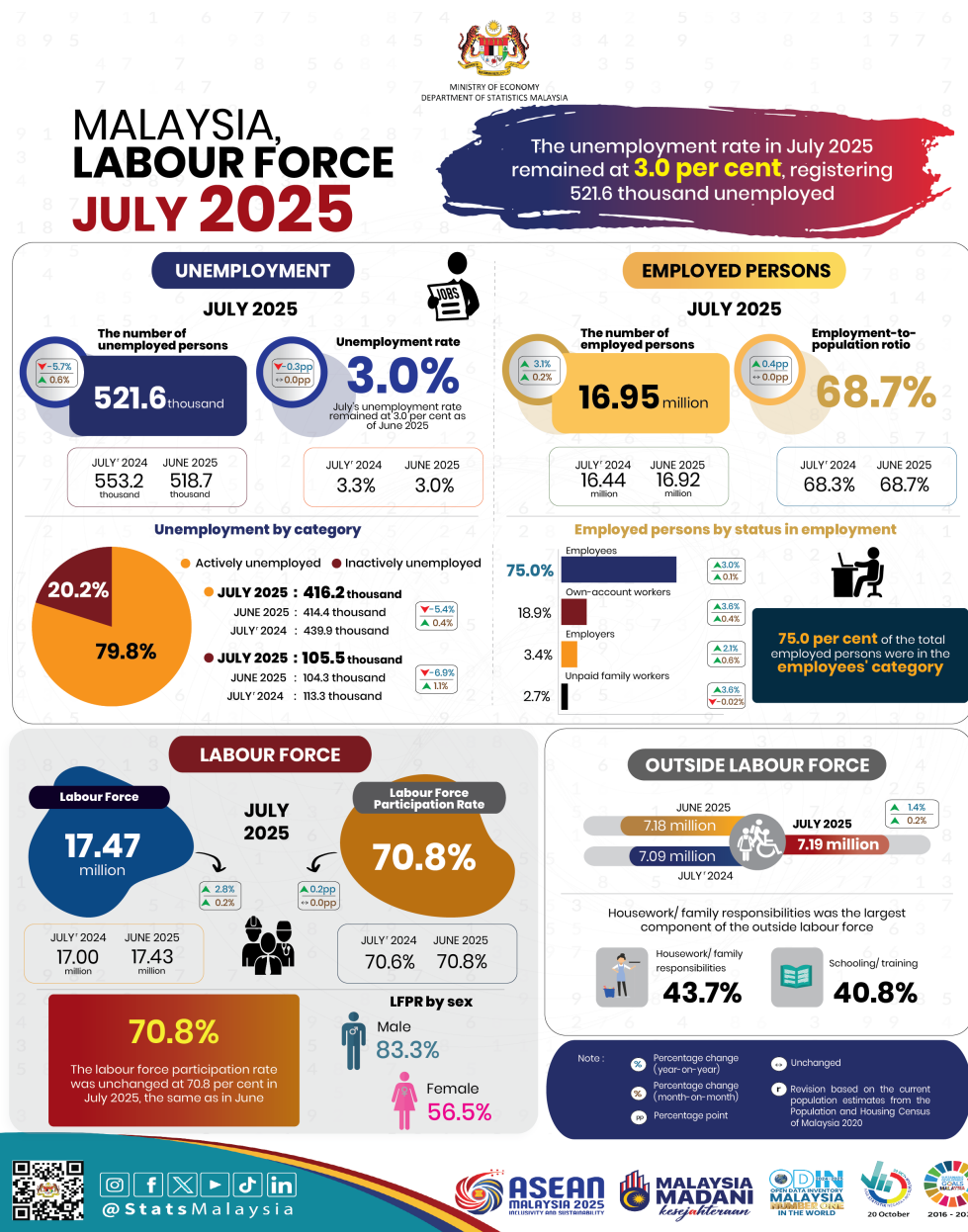




MINISTRY OF ECONOMY  
DEPARTMENT OF STATISTICS MALAYSIA

LABOUR FORCE STATISTICS, JULY 2025



- In July 2025, the number of **employed persons** was on an increasing trend, with an addition of **0.2 per cent (+33.6 thousand persons)** to **16.95 million persons** compared to the previous month (June 2025: 16.92 million persons). The **employment-to-population ratio**, which indicates the ability of an economy to create employment, held steady at **68.7 per cent** during the month, consistent with the level recorded in June 2025.
- In terms of economic sectors, the number of employed persons in the Services sector sustained its favourable momentum during the month, particularly in Wholesale & retail trade; Accommodation and food & beverage services; as well as Information & communication activities. On the same note, the Manufacturing, Construction, Agriculture, and Mining & quarrying sectors also recorded positive growth in employment.
- The **employees'** category continued to represent the largest share of employment, accounting for **75.0 per cent** of the total employed persons. This category recorded an increase of **0.1 per cent (+18.3 thousand persons)** to **12.71 million persons** in July 2025 (June 2025: 12.69 million persons). Similarly, the number of **own-account workers** experienced a growth of **0.4 per cent (+11.8 thousand persons)**, totalling **3.21 million persons** against the previous month (June 2025: 3.20 million persons).
- The number of **unemployed persons** during the month posted an increase of **0.6 per cent (+2.9 thousand persons)** to **521.6 thousand persons** (June 2025: 518.7 thousand persons). The **unemployment rate** in July 2025 stood at **3.0 per cent**, the same as the previous month.
- In July 2025, the **labour force** continued its upward trajectory, expanding by **0.2 per cent (+36.5 thousand persons)** month-on-month to reach **17.47 million persons**, compared to 17.43 million persons in the prior month. The **labour force participation rate (LFPR)** for July 2025 remained at **70.8 per cent**, as of June.
- The number of persons **outside the labour force** during the month recorded a rise of **0.2 per cent (+12.8 thousand persons)** to **7.19 million persons** compared to 7.18 million persons in June 2025. **Housework/ family responsibilities** was the largest component of the outside labour force, with a share of **43.7 per cent**, followed by the **schooling/ training** category at **40.8 per cent**.

The full publication of the Labour Force Report, July 2025 can be downloaded through eStatistik Portal

**Released by:**

**DEPARTMENT OF STATISTICS MALAYSIA**

**10 September 2025**

**Contact person:**

Baharudin Mohamad

Public Relation Officer

Strategic Communication and International Division

Department of Statistics Malaysia

Tel : +603-8090 4681

Fax : +603-8888 9248

Email : [baharudin\[at\]dosm.gov.my](mailto:baharudin[at]dosm.gov.my)

**Copyright ©2026 Department of Statistics Malaysia Official Portal. All Rights Reserved.**