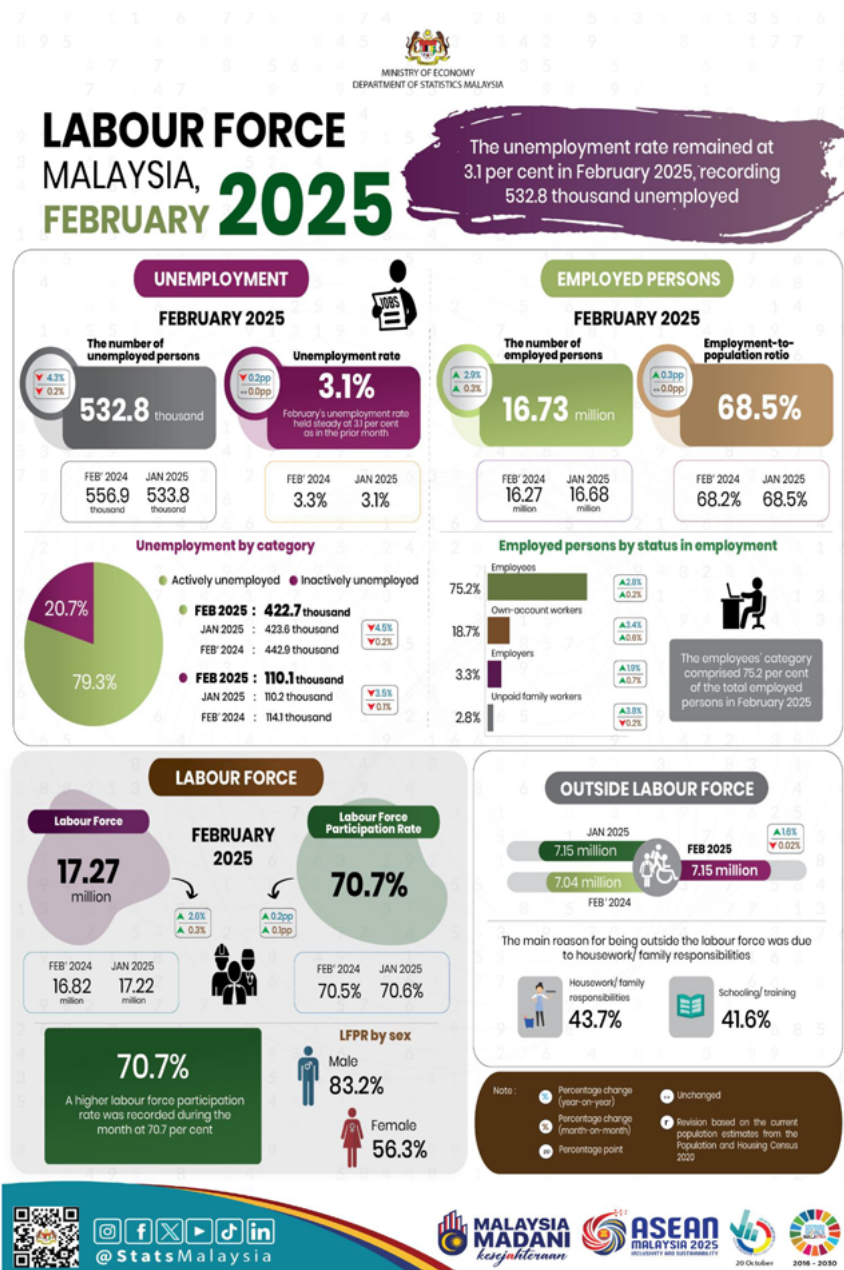




MINISTRY OF ECONOMY
DEPARTMENT OF STATISTICS MALAYSIA

LABOUR FORCE STATISTICS, FEBRUARY 2025



- The number of **employed persons** continued to show improvement in February 2025, increasing by **0.3 per cent (+49.7 thousand persons)** to **16.73 million persons** (January 2025: 16.68 million persons). The **employment-to-population ratio**, which indicates the ability of an economy to create employment, was unchanged at **68.5 per cent** as in the preceding month.
- In terms of economic sector, most of the employed persons were concentrated in the Services sector, largely in Accommodation and food & beverage services; Wholesale & retail trade; and Information & communication activities. A similar trend of employment was also observed in the Manufacturing, Construction, and Agriculture sectors, while the number of employed persons in the Mining & quarrying sector decreased.
- The **employees'** category comprised **75.2 per cent** of the total employed persons in February 2025, registering an increase of **0.2 per cent (+27.2 thousand persons)** to **12.59 million persons** (January 2025: 12.56 million persons). On the same note, the number of **own-account workers** also edged up by **0.6 per cent (+19.6 thousand persons)** to **3.13 million persons** (January 2025: 3.11 million persons).
- During the month, the number of **unemployed persons** fell by **0.2 per cent (-1.0 thousand persons)** from 533.8 thousand persons in January 2025 to **532.8 thousand persons** in February 2025. February's **unemployment rate** held steady at **3.1 per cent** as in the prior month.
- In February 2025, the number of **labour force** continued to expand with a rise of **0.3 per cent (+48.7 thousand persons)** to **17.27 million persons** (January 2025: 17.22 million persons). A higher **labour force participation rate (LFPR)** was recorded during the month at **70.7 per cent**, an increase of **0.1 percentage points** from 70.6 per cent in the previous month.
- The number of persons **outside the labour force** in February 2025 posted a marginal decrease of **0.02 per cent (-1.7 thousand persons)** to **7.15 million persons** (January 2025: 7.15 million persons). The main reason for being outside the labour force was due to **housework/ family responsibilities**, comprising **43.7 per cent**, followed by **schooling/ training** reasons at **41.6 per cent**.

Contact person:

Baharudin Mohamad
Public Relation Officer
Strategic Communication and International Division
Department of Statistics Malaysia
Tel : +603-8090 4681
Fax : +603-8888 9248
Email : baharudin[at]dosm.gov.my

Copyright ©2025 Department of Statistics Malaysia Official Portal. All Rights Reserved.