



MINISTRY OF ECONOMY
DEPARTMENT OF STATISTICS MALAYSIA

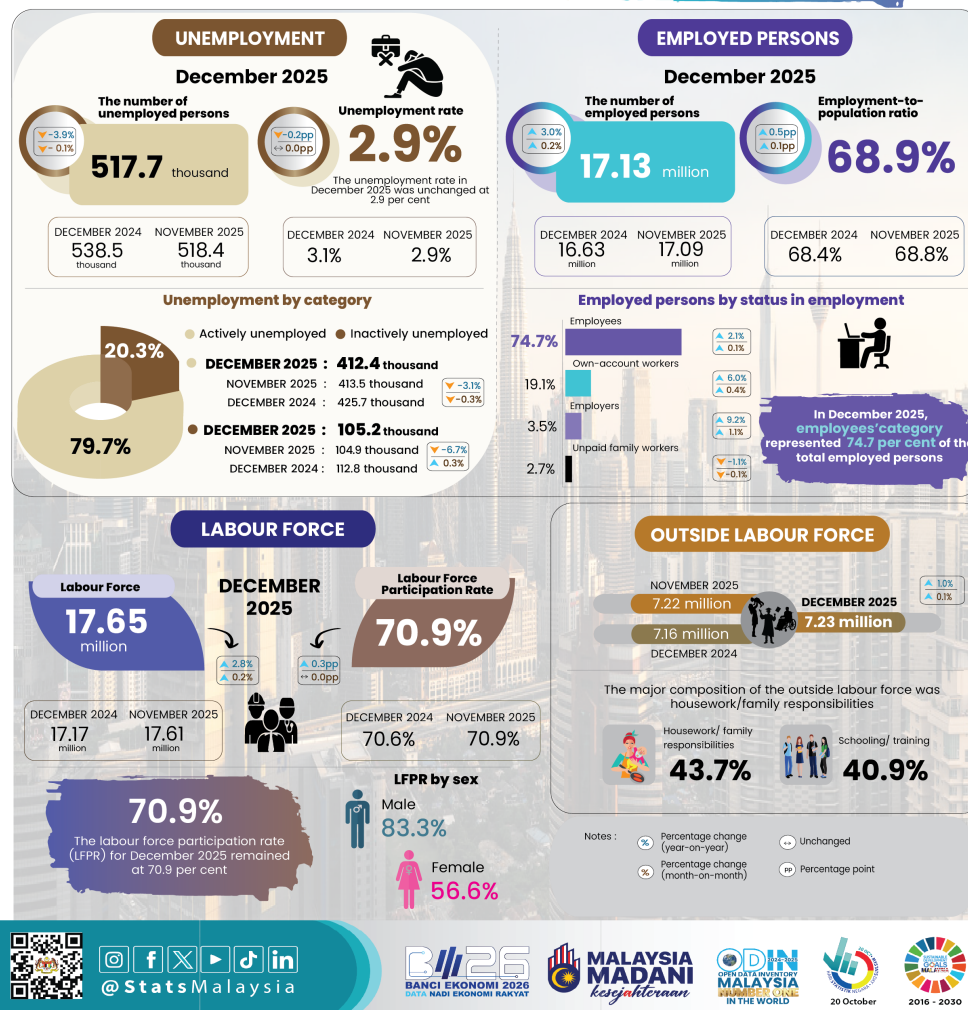
LABOUR FORCE STATISTICS, DECEMBER 2025



MINISTRY OF ECONOMY
DEPARTMENT OF STATISTICS MALAYSIA

MALAYSIA
LABOUR FORCE,
DECEMBER 2025

The unemployment rate in December 2025 was unchanged at **2.9 per cent**, recording 517.7 thousand unemployed



- The number of **employed persons** in December 2025 continued its upward trend, with an increase of **0.2 per cent (+37.0 thousand persons)** to **17.13 million persons**, compared to 17.09 million persons in November 2025. The **employment-to-population ratio**, which signals the ability of an economy to create jobs, edged up **0.1 percentage points** to **68.9 per cent** in December 2025 (November 2025: 68.8%).
- Employment by economic sectors indicates that the number of employed persons in the Services sector continued to record steady growth, particularly in Wholesale & retail trade, followed by Accommodation and food & beverage service activities, as well as Information & communication activities. Similarly, the number of employments also increased in the Agriculture, Manufacturing and Construction sectors, while the Mining & quarrying sectors experienced a slight decline during the month.
- In December 2025, the **employees'** category represented **74.7 per cent** of the total employed persons. This category went up by **0.1 per cent (+18.7 thousand persons)**, bringing the total to **12.80 million persons** compared to the previous month (November 2025: 12.78 million persons). Likewise, the number of **own-account workers** also showed an improvement, rising by **0.4 per cent (+12.0 thousand persons)** to **3.27 million persons** from 3.26 million persons in the preceding month.
- The number of **unemployed persons** during the month posted a slight decrease of **0.1 per cent (-0.7 thousand persons)** to **517.7 thousand persons** compared to the prior month (November 2025: 518.4 thousand persons). The **unemployment rate** in December 2025 was unchanged at **2.9 per cent** as of November 2025.
- The **labour force** continued to expand in December 2025, rising by **0.2 per cent (+36.2 thousand persons)** month-on-month to **17.65 million persons**, as against 17.61 million persons last month. December's **labour force participation rate** remained at **70.9 per cent**, the same as in the previous month.
- During the month, the number of persons **outside the labour force** posted an increase of **0.1 per cent**, or the equivalent of **+7.0 thousand persons** to **7.23 million persons** (November 2025: 7.22 million persons). The major composition of the outside labour force was **housework/ family responsibilities**, accounting for **43.7 per cent**, followed by the **schooling/ training** category at **40.9 per cent**.

The full publication of the Labour Force Report, December 2025 can be downloaded through eStatistik Portal

Released by:

DEPARTMENT OF STATISTICS MALAYSIA

11th February 2026

Contact person:

Baharudin Mohamad

Public Relation Officer

Strategic Communication and International Division

Department of Statistics Malaysia

Tel : +603-8090 4681

Fax : +603-8888 9248

Email : baharudin[at]dosm.gov.my

Copyright ©2026 Department of Statistics Malaysia Official Portal. All Rights Reserved.