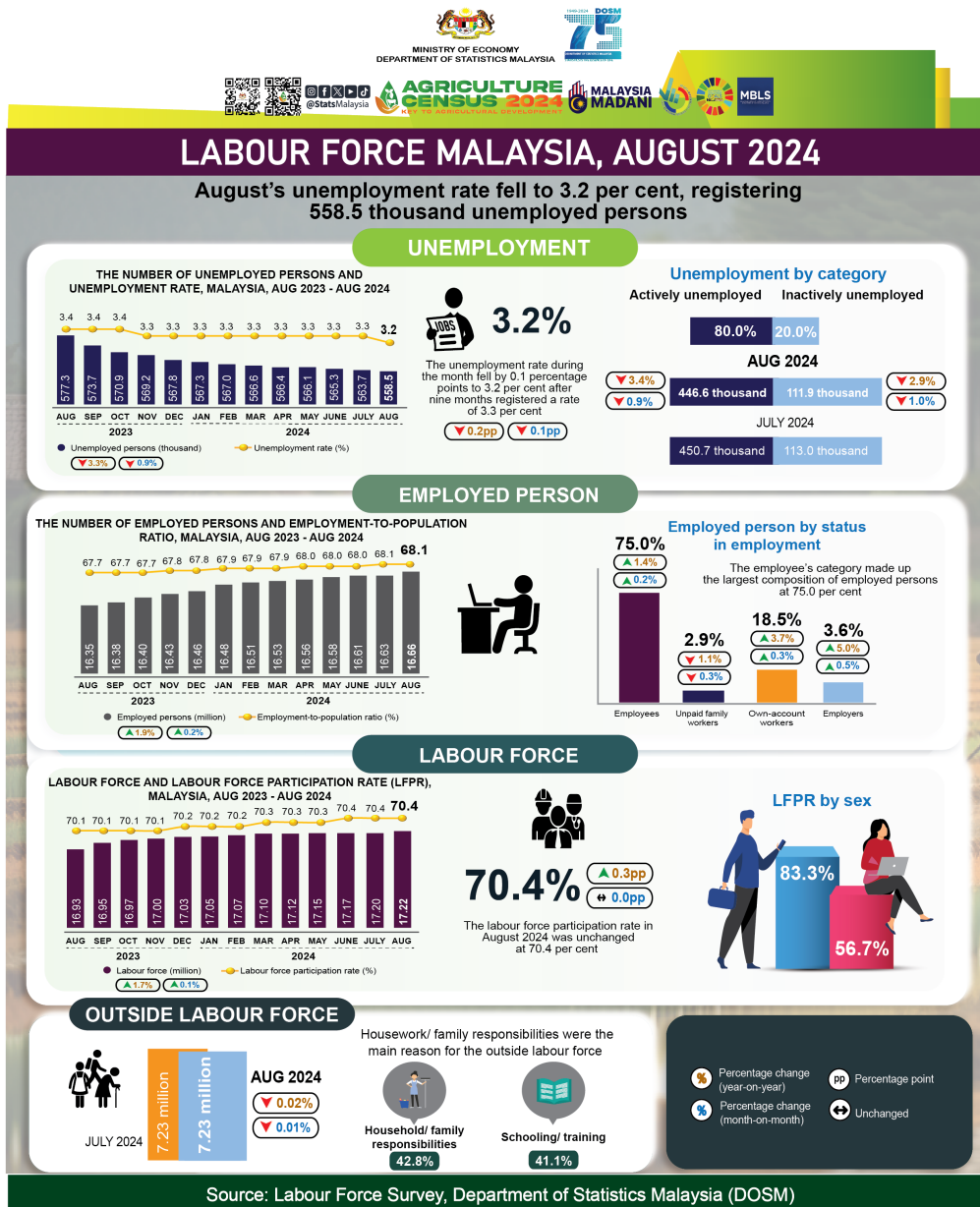




MINISTRY OF ECONOMY
DEPARTMENT OF STATISTICS MALAYSIA

LABOUR FORCE STATISTICS, AUGUST 2024



Source: Labour Force Survey, Department of Statistics Malaysia (DOSM)

- **The number of employed persons** remained positive with a month-on-month increase of **0.2 per cent** or equivalent to **29.4 thousand persons** to record **16.66 million persons** in August 2024 (July 2024: 16.63 million persons). The **employment-to-population ratio**, which indicates the ability of an economy to create employment, stood at **68.1 per cent** as of July 2024.
- By the economic sector, the number of employed persons in the Services sector continued its upward trend, particularly in Wholesale & retail trade; Food & beverage services; and Transportation & storage activities. Similar trends in employment were also observed in the Manufacturing, Construction, Mining & quarrying and Agriculture sectors.
- In August 2024, the **employee's** category, which made up the largest composition of employed persons at **75.0 per cent**, improved by **0.2 per cent (+18.7 thousand persons)** to **12.50 million persons** (July 2024: 12.48 million persons). On the same note, the **own-account workers** also posted a rise of **9.5 thousand persons (+0.3%)** to **3.08 million persons** (July 2024: 3.07 million persons).
- The number of **unemployed persons** declined further in August 2024 to record **558.5 thousand persons**, reduced by **0.9 per cent (-5.2 thousand persons)** as compared to 563.7 thousand persons in July 2024. The **unemployment rate** during the month fell by **0.1 percentage points** to **3.2 per cent** after nine months registered a rate of 3.3 per cent.
- The number of **labour force** continued to increase in August 2024 with a rise of **0.1 per cent, (+24.2 thousand persons)** to 17.22 million persons (July 2024: 17.20 million persons). The **labour force participation rate (LFPR)** during the month was unchanged at **70.4 per cent**, as recorded last month.
- The number of **labour force** continued to increase in August 2024 with a rise of **0.1 per cent, (+24.2 thousand persons)** to 17.22 million persons (July 2024: 17.20 million persons). The **labour force participation rate (LFPR)** during the month was unchanged at **70.4 per cent**, as recorded last month.
- The number of persons **outside the labour force** showed a slight decline of **0.01 per cent (-0.7 thousand persons)** to **7.23 million persons** in August 2024 (July 2024: 7.23 million persons). **Housework/ family responsibilities** were the main reason for the outside labour force (**42.8%**), followed by **schooling/ training** reasons with **41.1 per cent**.

The full publication of the Labour Force Report, August 2024 can be downloaded through eStatistik Portal

Released by:

DEPARTMENT OF STATISTICS MALAYSIA

10 OCTOBER 2024

Contact person:

Baharudin Mohamad

Public Relation Officer

Strategic Communication and International Division

Department of Statistics Malaysia

Tel : +603-8090 4681

Fax : +603-8888 9248

Email : [baharudin\[at\]dosm.gov.my](mailto:baharudin[at]dosm.gov.my)

Copyright ©2025 Department of Statistics Malaysia Official Portal. All Rights Reserved.