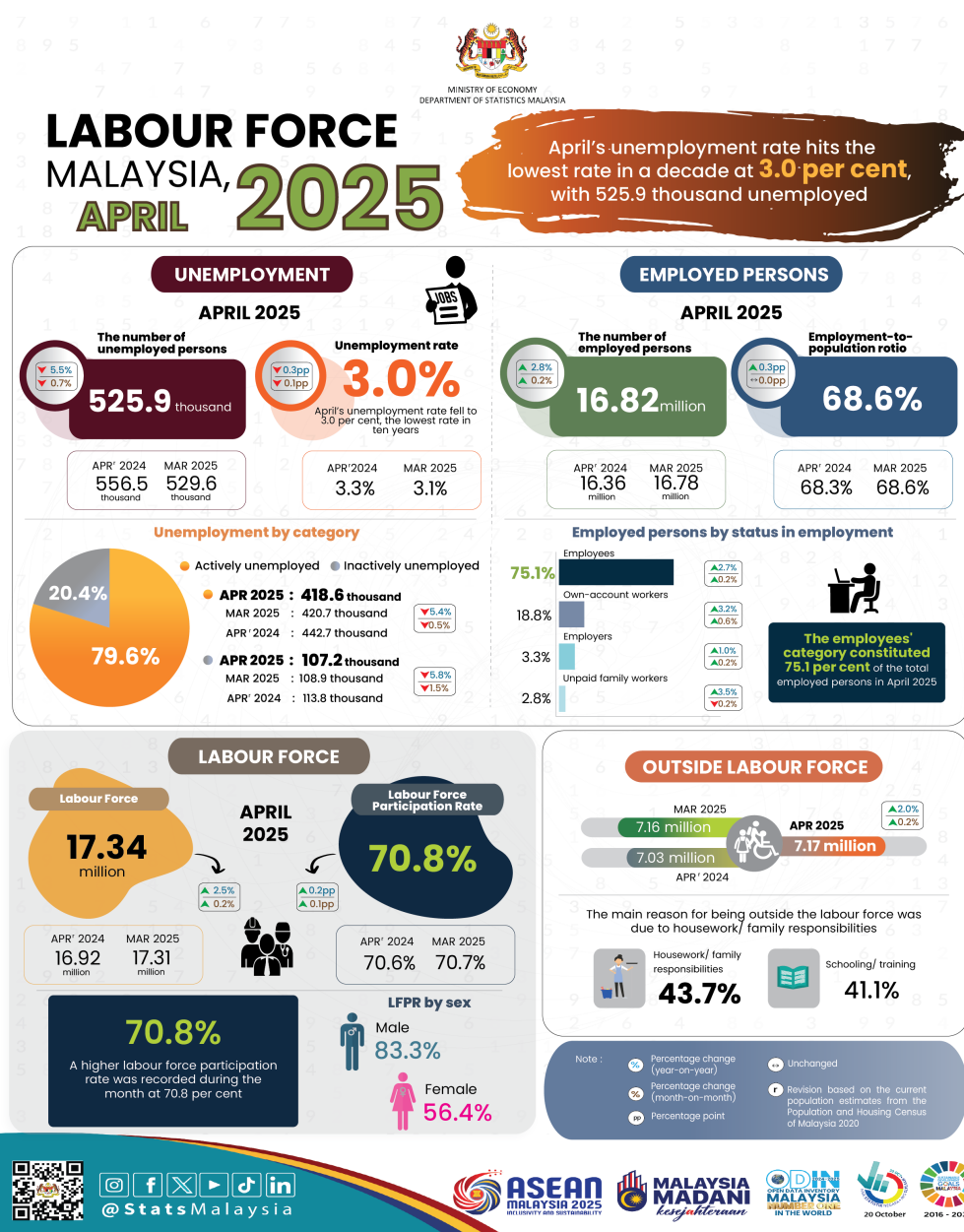


LABOUR FORCE STATISTICS, APRIL 2025



- In April 2025, the number of **employed persons** continued to expand, rising by **0.2 per cent (+40.1 thousand persons)** to **16.82 million persons** compared to 16.78 million persons in March 2025. The **employment-to-population ratio**, which indicates the ability of an economy to create employment, remained at **68.6 per cent** as in the previous month.
- In terms of economic sector, the number of employed persons in the Services sector was on an increasing trend, particularly in Wholesale and retail trade; Accommodation and food & beverage services; and Transportation & storage activities. Likewise, the number of employed persons also increased in the Manufacturing, Construction, Agriculture, and Mining & quarrying sectors.
- The **employees'** category constituted **75.1 per cent** of the total employed persons in April 2025, continuing to rise by **0.2 per cent (+22.1 thousand persons)** to **12.63 million persons** compared to 12.61 million in March 2025. Similarly, the number of **own-account workers** increased by **0.6 per cent (+17.6 thousand persons)** to **3.16 million persons** from 3.15 million persons in the previous month.
- In April 2025, the number of **unemployed persons** fell by **0.7 per cent (-3.7 thousand persons)** from 529.6 thousand persons in March 2025 to **525.9 thousand persons**. April's **unemployment rate** hit the lowest rate in a decade at **3.0 per cent** (April 2015: 3.0%), dropping by **0.1 percentage points** from 3.1 per cent in the previous month.
- The number of **labour force** was on an uptrend in April, registering a month-on-month increase of **0.2 per cent (+36.4 thousand persons)** to **17.34 million persons** (March 2025: 17.31 million persons). Accordingly, a higher **labour force participation rate (LFPR)** was recorded during the month at **70.8 per cent**, rising by **0.1 percentage points** from the prior month (March 2025: 70.7%).
- The number of persons **outside the labour force** in April 2025 registered an increase of **0.2 per cent (+11.3 thousand persons)** to **7.17 million persons** (March 2025: 7.16 million persons). The main reason for being outside the labour force was due to **housework/ family responsibilities**, with a share of **43.7 per cent**, followed by **schooling/ training** at **41.1 per cent**.

Released by:

DEPARTMENT OF STATISTICS MALAYSIA

11 JUNE 2025

Contact person:

Baharudin Mohamad

Public Relation Officer

Strategic Communication and International Division

Department of Statistics Malaysia

Tel : +603-8090 4681

Fax : +603-8888 9248

Email : baharudin[at]dosm.gov.my

Copyright ©2025 Department of Statistics Malaysia Official Portal. All Rights Reserved.