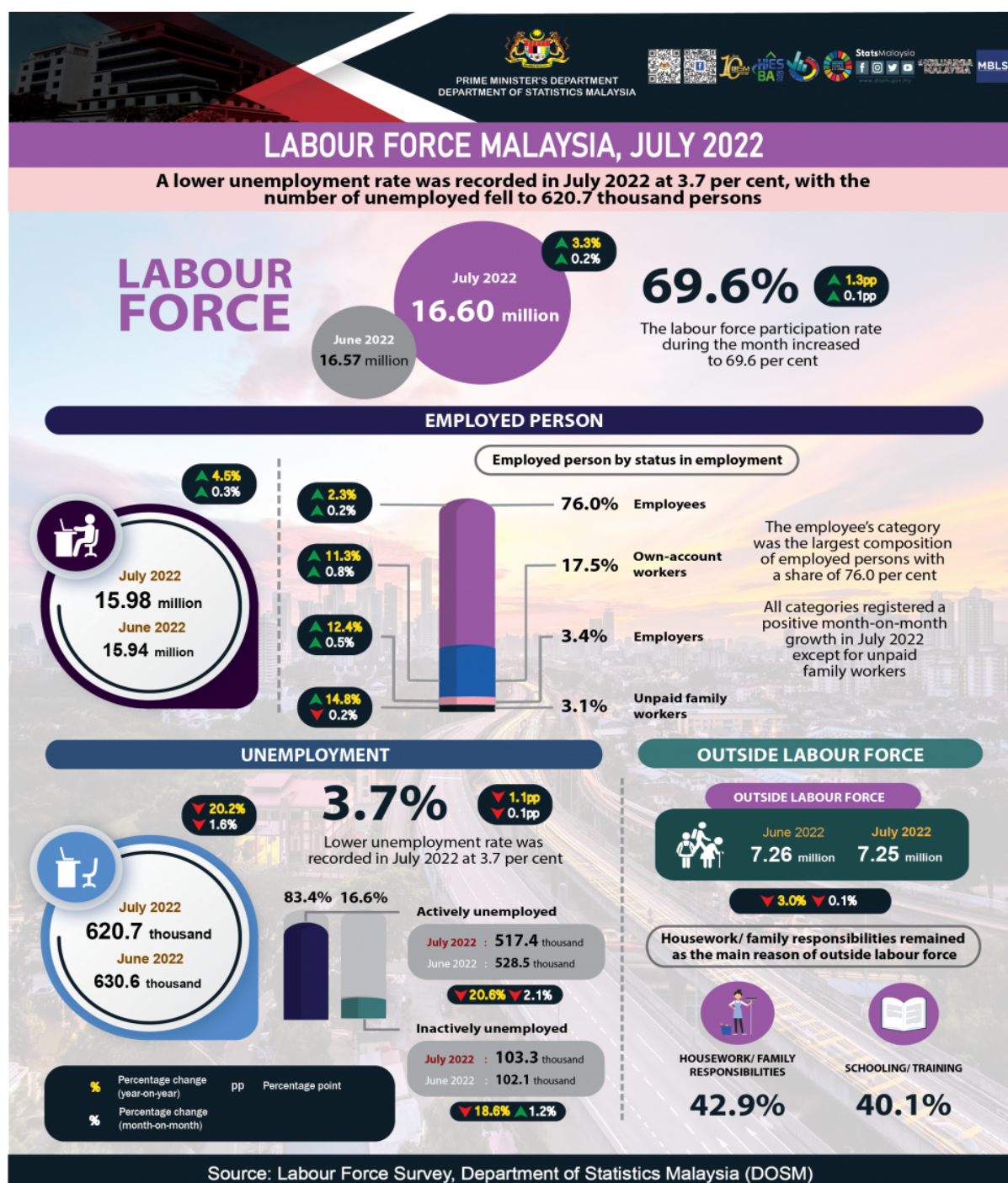




MINISTRY OF ECONOMY
DEPARTMENT OF STATISTICS MALAYSIA

KEY STATISTICS OF LABOUR FORCE IN MALAYSIA, JULY 2022



- July's employed persons continued to record a positive growth with 0.3 per cent or equivalent to an increase of 42.1 thousand persons to account for 15.98 million persons (June 2022: 15.94 million persons). Based on the seasonally adjusted data, the number of employed persons decreased by 0.2 per cent. During the month, the employment-to-population ratio which indicates the ability of an economy to create employment rose by 0.1 percentage points to 67.0 per cent in July 2022 (June 2022: 66.9%).
- In terms of the economic sector, employment in the Services sector continued to expand, largely in Food & beverages services; Wholesale & retail trade and Administrative & support service activities. Likewise, employment in the Manufacturing and Construction sectors also increased, while employed persons in the Agriculture and Mining & quarrying sectors declined.
- By status in employment, the employee's category was the largest composition of employed persons with a share of 76.0 per cent. This category rose by 0.2 per cent or equivalent to 19.3 thousand persons to record 12.14 million persons in July 2022 (June 2022: 12.13 million persons). Similarly, the own-account workers continued to trend up with an addition of 21.3 thousand persons (+0.8%) to 2.79 million persons (June 2022: 2.77 million persons).
- The number of unemployed persons in July 2022 which was 620.7 thousand persons, remained on a downward trend with a decreased of 1.6 per cent or equivalent to 9.9 thousand persons (June 2022: 630.6 thousand persons). In the meantime, the number of unemployed persons fell by 0.4 per cent in seasonally adjusted terms. Accordingly, a lower unemployment rate was recorded during the month at 3.7 per cent, a decrease of 0.1 percentage points as compared to June 2022 (3.8%). Meanwhile, seasonally adjusted estimates for the unemployment rate remained at 3.6 per cent.
- The number of labour force increased by 0.2 per cent (+32.3 thousand persons) in July 2022, reaching 16.60 million persons (June 2022: 16.57 million persons). Therefore, the labour force participation rate (LFPR) rose by 0.1 percentage points to 69.6 per cent. In terms of seasonally adjusted estimates, the labour force declined by 0.1 per cent, while the LFPR edged down by 0.1 percentage points.
- In July 2022, the number of persons outside labour force declined marginally by 0.1 per cent (-7.6 thousand persons) to 7.25 million persons (June 2022: 7.26 million persons). Housework/ family responsibilities remained as the main reason of outside labour force with a share of 42.9 per cent, followed by schooling/ training category with 40.1 per cent.

The full publication of the Labour Force Report, July 2022 can be downloaded through [eStatistik](#) Portal.

Released by:

DEPARTMENT OF STATISTICS MALAYSIA

09 SEPTEMBER 2022

Contact person:

Baharudin Mohamad

Public Relation Officer

Strategic Communication and International Division

Department of Statistics, Malaysia

Tel : +603-8885 7942

Fax : +603-8888 9248

Email : baharudin@dosm.gov.my

Contact person:

Baharudin Mohamad

Public Relation Officer

Strategic Communication and International Division

Department of Statistics Malaysia

Tel : +603-8090 4681

Fax : +603-8888 9248

Email : baharudin[at]dosm.gov.my

Copyright ©2025 Department of Statistics Malaysia Official Portal. All Rights Reserved.