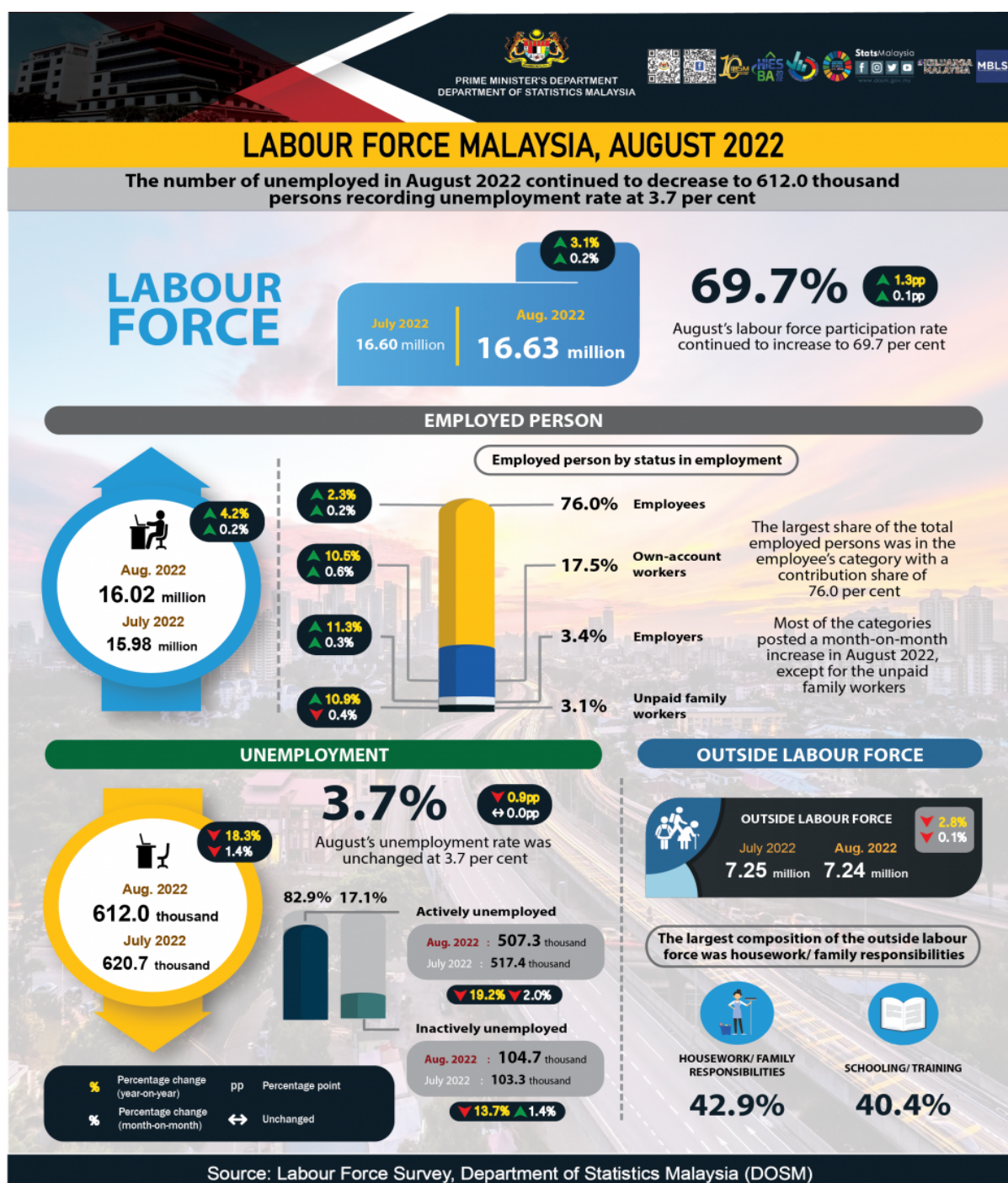




MINISTRY OF ECONOMY
DEPARTMENT OF STATISTICS MALAYSIA

KEY STATISTICS OF LABOUR FORCE IN MALAYSIA, AUGUST 2022



- In August 2022, employed persons remained stable by registering an increase of 0.2 per cent or equivalent to 39.3 thousand persons to record 16.02 million persons (July 2022: 15.98 million persons). In terms of seasonally adjusted data, the number of employed persons rose by 0.4 per cent. The employment-to-population ratio which indicates the ability of an economy to create employment, went up by 0.1 percentage points recording 67.1 per cent in August 2022 as compared to July 2022 (67.0%).
- By economic sector, the number of employed persons in Services sector remained on an increasing trend, particularly in Food & beverages services; Wholesale & retail trade and Administrative & support service activities. A similar trend was observed in the Manufacturing and Construction sectors, while the number of employed persons in the Agriculture and Mining & quarrying sectors continued to decrease.
- Looking at the status in employment, the largest share of the total employed persons was in the employee's category with a share of 76.0 per cent. This category increased by 0.2 per cent (+22.1 thousand persons) to 12.17 million persons during the month (July 2022: 12.14 million persons). On the same note, the own-account workers remained on an upward trend with an addition of 17.2 thousand persons (+0.6%) to record 2.80 million persons (July 2022: 2.79 million persons). This group consisted mostly of daily income earners working as small business operators such as retailers; hawkers; sellers in markets and stalls, as well as smallholders.
- In August 2022, the number of unemployed persons sustained its downward trend, posting a reduction of 1.4 per cent (-8.7 thousand persons) to record 612.0 thousand persons (July 2022: 620.7 thousand persons). On the contrary, in seasonally adjusted terms, the number of unemployed persons rose by 0.5 per cent. August's unemployment rate was unchanged at 3.7 per cent, while the seasonally adjusted estimates for the unemployment rate remained at 3.6 per cent.
- During the month, the number of labour force strengthened further with an increase of 0.2 per cent (+30.5 thousand persons) to 16.63 million persons (July 2022: 16.60 million persons). Consequently, the labour force participation rate (LFPR) continued to increase by 0.1 percentage points, registering 69.7 per cent. The seasonally adjusted estimates showed that the labour force rose by 0.2 per cent, while the LFPR remained at 69.7 per cent.
- The number of persons outside labour force remained on a declining trend with a reduction of 5.9 thousand persons (-0.1%) to record 7.24 million persons (July 2022: 7.25 million persons). The largest composition of the outside labour force was mainly in the housework/ family responsibilities category, comprising 42.9 per cent, while the next was the schooling/ training category with a share of 40.4 per cent.
- Malaysia's economic performance is observed to continue improving, as reflected by the economic indicators showing positive growth, such as the external trade indicators, which recorded a significant increase in August 2022 as compared to the previous year. Similarly, the Leading Index (LI), which anticipates the economy's direction for the next four to six months, remained stable. Thus, the outlook for the Malaysian economy is expected to remain optimistic in the future based on

the smoothed long-term trend index, which continues to surpass 100.0 points. In line with the improving economic condition, the labour market is also expected to continue to flourish in the upcoming months, coupled with new entrants into the labour market as well as the entry of foreign labour into the country in the near future, which is expected to meet the increasing needs of the labour force in the market.

The full publication of the Labour Force Report, August 2022 can be downloaded through [eStatistik](#) Portal.

Released by:

DEPARTMENT OF STATISTICS MALAYSIA

11 OCTOBER 2022

Contact person:

Baharudin Mohamad

Public Relation Officer

Strategic Communication and International Division

Department of Statistics, Malaysia

Tel : +603-8885 7942

Fax : +603-8888 9248

Email : baharudin@dosm.gov.my

Contact person:

Baharudin Mohamad

Public Relation Officer

Strategic Communication and International Division

Department of Statistics Malaysia

Tel : +603-8090 4681

Fax : +603-8888 9248

Email : baharudin[at]dosm.gov.my

Copyright ©2025 Department of Statistics Malaysia Official Portal. All Rights Reserved.