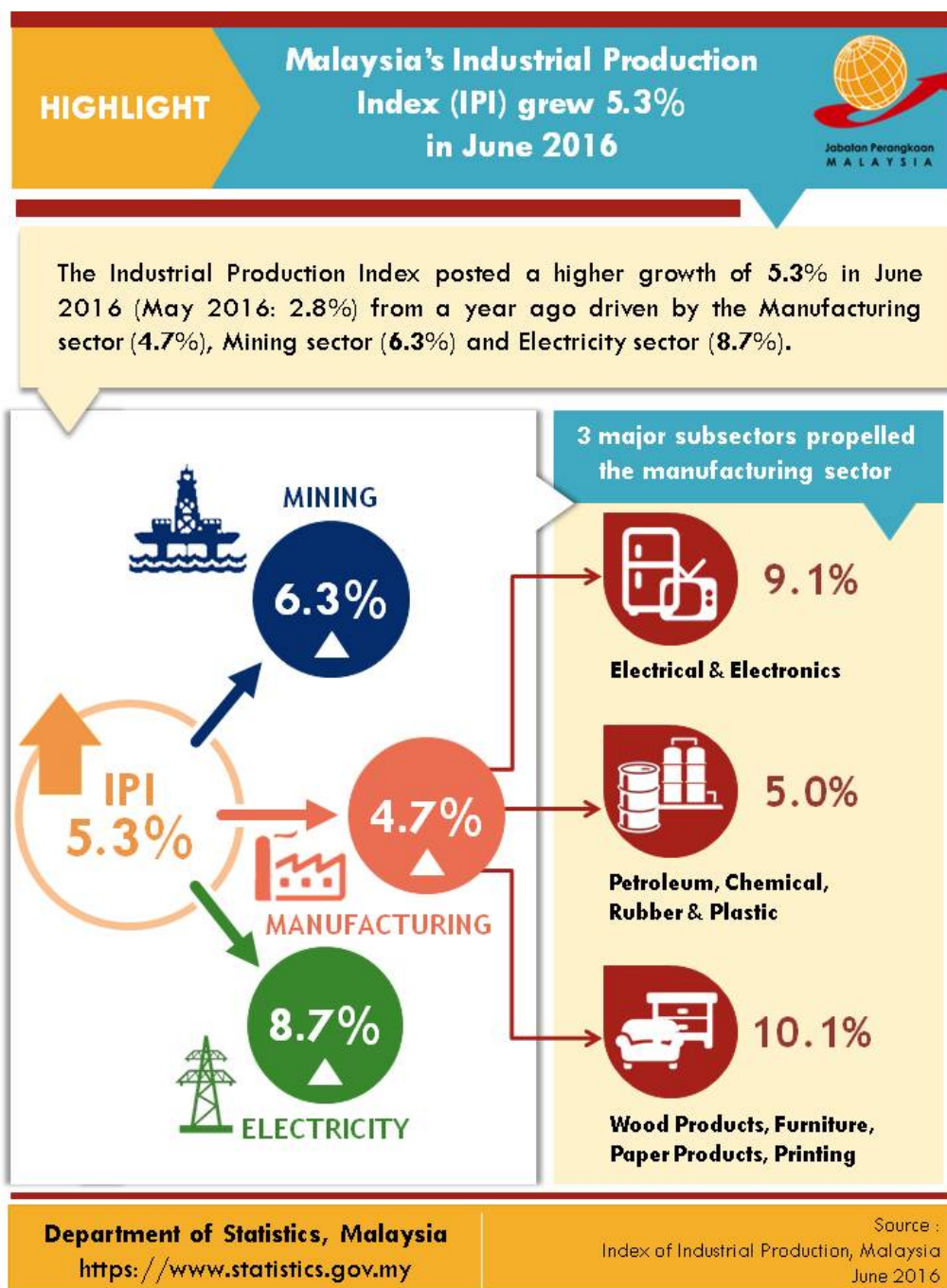




MINISTRY OF ECONOMY  
DEPARTMENT OF STATISTICS MALAYSIA

## INDEX OF INDUSTRIAL PRODUCTION, MALAYSIA JUNE 2016



## **Malaysia's Industrial Production Index (IPI) grew 5.3% in June 2016**

The Industrial Production Index (IPI) in June 2016 posted a higher growth of **5.3%** as compared to 2.8% registered in May 2016. The expansion was driven by positive growth in all sectors: Manufacturing (**4.7%**), Mining (**6.3%**) and Electricity (**8.7%**).

The Manufacturing sector continued to expand at **4.7%** in June 2016 after registering a growth of 3.7% in May 2016. The growth in June 2016 was supported by three major sub-sectors; Electrical and Electronics Products (**9.1%**), Petroleum, Chemical, Rubber and Plastic Products (**5.0%**) and Wood Products, Furniture, Paper Products, Printing (**10.1%**).

The Mining sector output grew substantially by **6.3%** in June 2016 after recorded a decrease of 1.1% in May 2016. The higher growth in Mining sector was contributed by the increase in Crude Oil index (**8.8%**) and Natural Gas index (**3.5%**) .

The Electricity sector output grew by **8.7%** as compared to 9.6% growth recorded in May 2016.

### **\*Notes:**

Data for June 2016 is **provisional**. The data will be updated based on the latest available figures and subsequently published in the publication July 2016.

### **Released By:**

**THE OFFICE OF CHIEF STATISTICIAN MALAYSIA  
DEPARTMENT OF STATISTICS, MALAYSIA  
11 AUGUST 2016**

### **Contact person:**

Ho Mei Kei  
Public Relation Officer  
Corporate and User Services Division  
Department of Statistics, Malaysia  
**Tel** : +603-8885 7942  
**Fax** : +603-8888 9248  
**Email** : mkho[at]stats.gov.my

### **Contact person:**

Baharudin Mohamad  
Public Relation Officer  
Strategic Communication and International Division  
Department of Statistics Malaysia  
**Tel** : +603-8090 4681  
**Fax** : +603-8888 9248  
**Email** : baharudin[at]dosm.gov.my

**Copyright ©2026 Department of Statistics Malaysia Official Portal. All Rights Reserved.**