

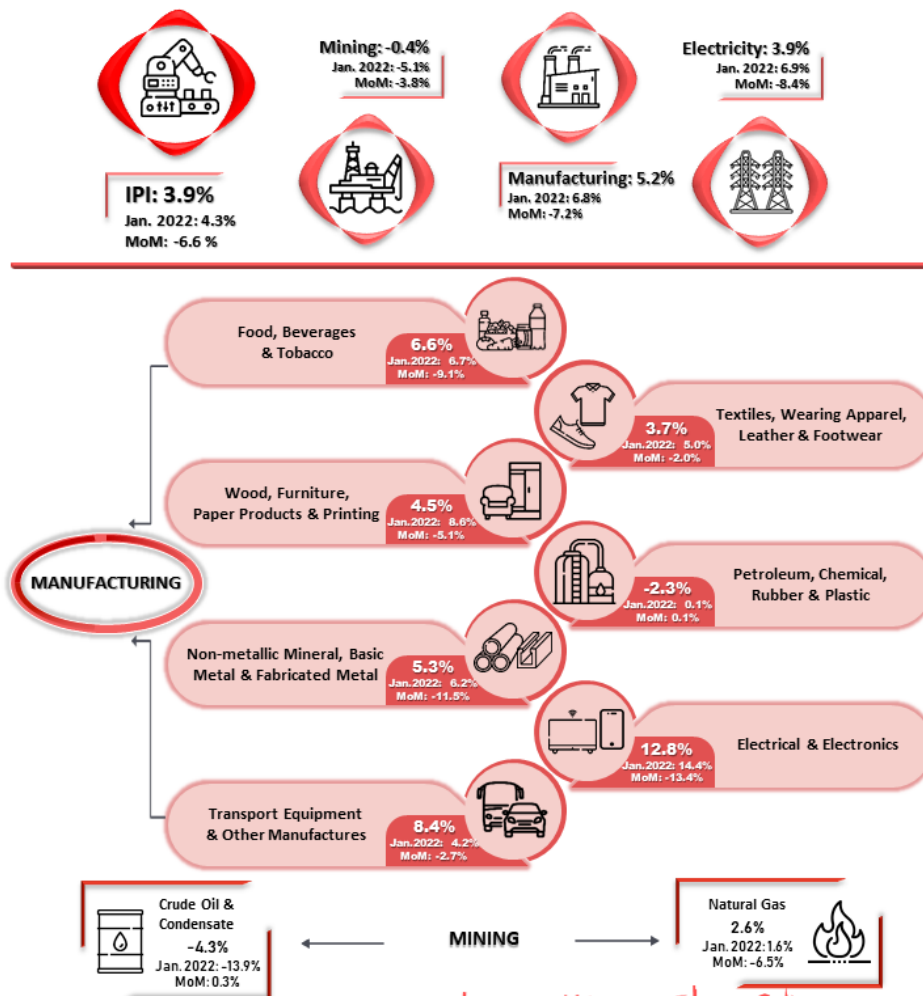


MINISTRY OF ECONOMY
DEPARTMENT OF STATISTICS MALAYSIA

INDEX OF INDUSTRIAL PRODUCTION, MALAYSIA FEBRUARY 2022



Malaysia's Industrial Production Index (IPI) registered an expansion of 3.9 per cent in February 2022, driven by Manufacturing sector, grew 5.2 per cent



Note:
Percentage refers to the change in
Month-on-month (MoM) And Year-on-year (YoY)

Source:
Index Of Industrial Production Malaysia, February 2022
Department Of Statistics Malaysia

Malaysia's Industrial Production Index (IPI) registered an expansion of 3.9 per cent in February

2022, driven by Manufacturing sector, grew 5.2 per cent

The Industrial Production Index (IPI) increased **3.9 per cent** in February 2022 as compared to the same month of the previous year. The expansion of IPI was contributed by the increment of **5.2 per cent** in Manufacturing index and **3.9 per cent** in Electricity index. Meanwhile, Mining index recorded a decline of **0.4 per cent**.

The Manufacturing sector output based on year-on-year comparison increased by **5.2 per cent** in February 2022 after recording a growth of 6.8 per cent in January 2022. The main subsectors contributed to the growth in Manufacturing sector in February 2022 were Electrical & Electronics Products (**12.8%**), Transport Equipment & Other Manufactures (**8.4%**) and Food, Beverages & Tobacco Products (**6.6%**). Simultaneously, domestic-oriented and export-oriented industries recorded a growth of **6.2 per cent** and **4.7 per cent** respectively.

The Mining sector output declined **0.4 per cent** in February 2022 as compared to the same period of the previous year. The deterioration was affected by the decrease of **4.3 per cent** in Crude Oil & Condensate index. Meanwhile, Natural Gas index grew **2.6 per cent**. The Electricity sector output rose **3.9 per cent** in February 2022 as compared to the same month last year.

The full publication of the Industrial Production Index, February 2022 can be downloaded through [eStatistik](#) portal.

*** Notes:**

Data for February 2022 is **provisional**. The data will be updated based on the latest available figures and subsequently published in the March 2022 publication.

Released By:

DEPARTMENT OF STATISTICS, MALAYSIA

11 April 2022

Contact person:

Mohd Yusrizal Ab Razak
Public Relation Officer
Strategic Communication and International Division
Department of Statistics, Malaysia
Tel : +603-8885 7942
Fax : +603-8888 9248
E-mail : yusrizal.razak[at]dosm.gov.my

Contact person:

Baharudin Mohamad
Public Relation Officer
Strategic Communication and International Division
Department of Statistics Malaysia
Tel : +603-8090 4681
Fax : +603-8888 9248
Email : baharudin[at]dosm.gov.my

