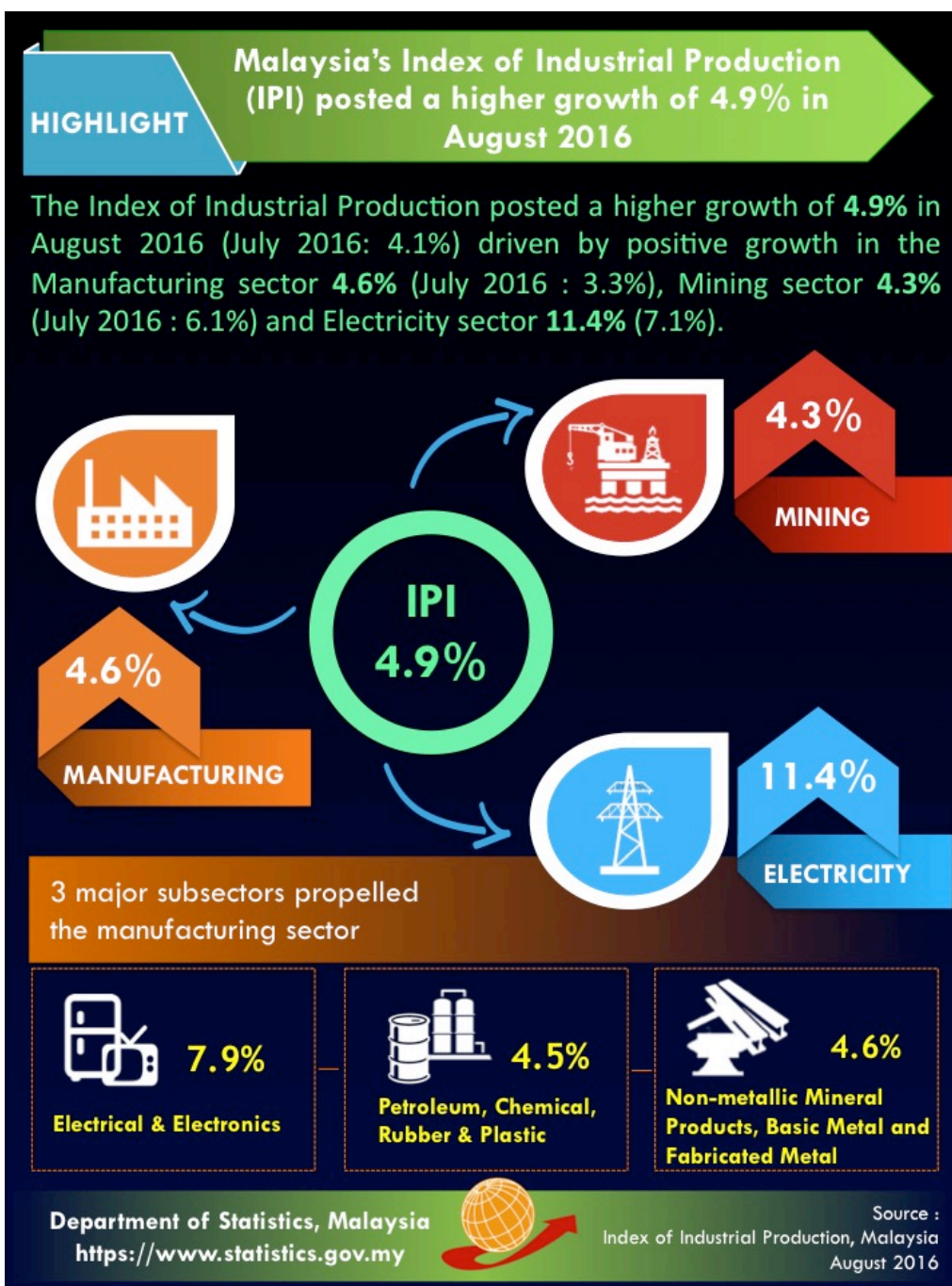




MINISTRY OF ECONOMY
DEPARTMENT OF STATISTICS MALAYSIA

INDEX OF INDUSTRIAL PRODUCTION, MALAYSIA AUGUST 2016



Malaysia's Index of Industrial Production (IPI) posted a higher growth of 4.9% in August 2016

The Industrial Production Index (IPI) posted a higher growth of **4.9%** in August 2016 as compared to the same month of the previous year. The expansion in August 2016 was driven by positive growth in all indices: Manufacturing (**4.6%**), Mining (**4.3%**) and Electricity (**11.4%**).

The Manufacturing sector output expanded further by **4.6%** in August 2016 after an increase of 3.3% recorded in July 2016. The major sub-sectors which recorded growth in August 2016 were: Electrical and Electronics Products (**7.9%**); Petroleum, Chemical, Rubber and Plastic Products (**4.5%**) and Non-metallic Mineral Products, Basic Metal and Fabricated Metal Products (**4.6%**).

The Mining sector output recorded a growth of **4.3%** in August 2016 after a 6.1% increase in July 2016. The expansion in August 2016 was supported by the increase in Crude Oil index (**6.5%**) and Natural Gas index (**1.5%**).

The Electricity sector output expanded significantly by **11.4%** in August 2016 following an increase of 7.1% recorded in July 2016.

***Notes:**

Data for August 2016 is **provisional**. The data will be updated based on the latest available figures and subsequently published in the publication September 2016.

Released By:

THE OFFICE OF CHIEF STATISTICIAN MALAYSIA
DEPARTMENT OF STATISTICS, MALAYSIA
12 OCTOBER 2016

Contact person:

Ho Mei Kei
Public Relation Officer
Corporate and User Services Division
Department of Statistics, Malaysia
Tel : +603-8885 7942
Fax : +603-8888 9248
Email : mkho[at]stats.gov.my

Contact person:

Baharudin Mohamad
Public Relation Officer
Strategic Communication and International Division
Department of Statistics Malaysia
Tel : +603-8090 4681
Fax : +603-8888 9248
Email : baharudin[at]dosm.gov.my

Copyright ©2025 Department of Statistics Malaysia Official Portal. All Rights Reserved.