



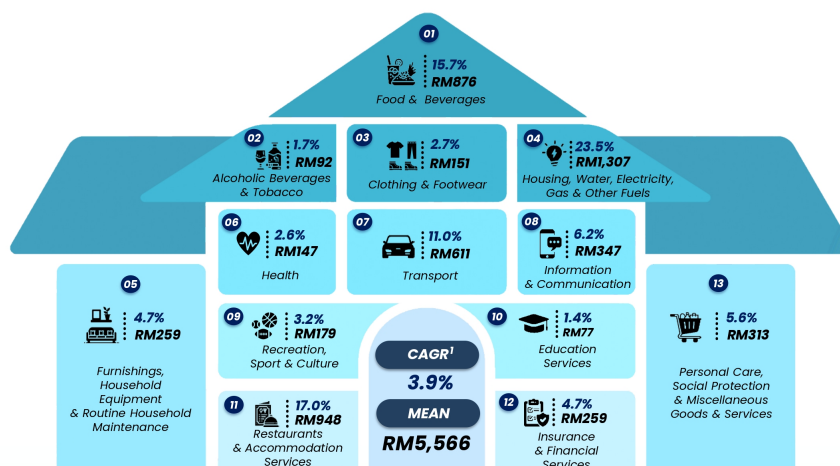
MINISTRY OF ECONOMY
DEPARTMENT OF STATISTICS MALAYSIA

HOUSEHOLD EXPENDITURE SURVEY REPORT 2024 (MALAYSIA & STATES)

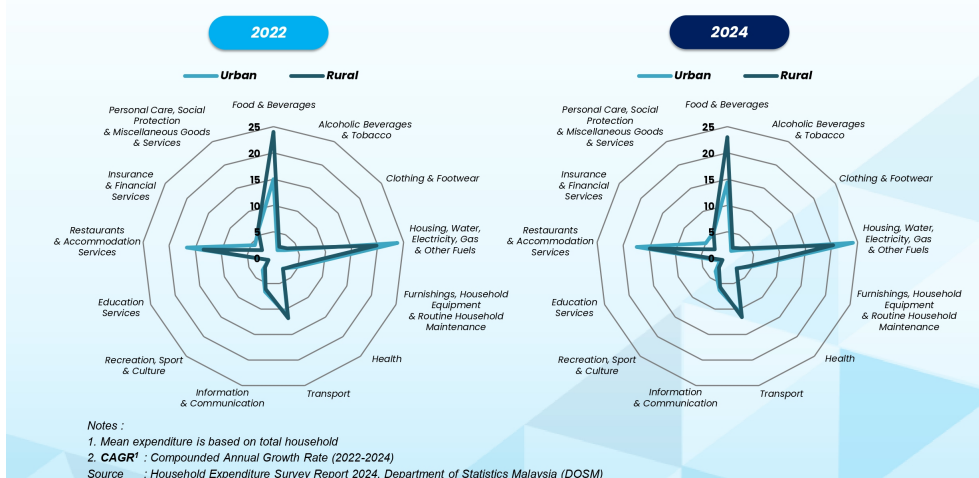


MINISTRY OF ECONOMY
DEPARTMENT OF STATISTICS MALAYSIA

COMPOSITION OF MEAN MONTHLY HOUSEHOLD CONSUMPTION EXPENDITURE BY MAIN GROUPS, MALAYSIA, 2024



COMPOSITION OF MEAN MONTHLY HOUSEHOLD CONSUMPTION EXPENDITURE BY STRATA, MALAYSIA, 2022 AND 2024



@StatsMalaysia



Household expenditure pattern

- The mean monthly household consumption expenditure rose from RM5,150 in 2022 to RM5,566 in 2024.
- According to household expenditure patterns, the expenditure composition of 67.2 per cent was influenced by four (4) main groups of expenditure which are Housing, Water, Electricity, Gas & Other Fuels (23.5%); Restaurant & Accommodation Services (17.0%); Food & Beverages (15.7%); and Transport (11.0%).
- Expenditure on Restaurant & Accommodation Services increased 0.9 percentage point to 17.0 per cent (2022: 16.9%). On the other hand, the Food & Beverages group recorded a decrease to 15.7 per cent (2022: 16.3%).

Household expenditure by state

- At the state level, the highest mean monthly household consumption expenditure was recorded in W.P Putrajaya (RM9,186).
- Five (5) other states also recorded household consumption expenditure above the national mean (RM5,566) namely W.P. Kuala Lumpur (RM8,178); Selangor (RM7,266); Melaka (RM6,212); Johor (RM5,927); and Pulau Pinang (RM5,850).
- Meanwhile, eight (8) states exceed the national mean consumption expenditure annual growth rate, namely Johor (5.2%); Pulau Pinang (4.7%); Negeri Sembilan (4.5%); Sarawak (4.5%); Kelantan (4.4%); Melaka (4.2%); Terengganu (4.2%); and Perak (4.0%).

Contact person:

Baharudin Mohamad
Public Relation Officer
Strategic Communication and International Division
Department of Statistics Malaysia
Tel : +603-8090 4681
Fax : +603-8888 9248
Email : baharudin[at]dosm.gov.my

Copyright ©2025 Department of Statistics Malaysia Official Portal. All Rights Reserved.