



MINISTRY OF ECONOMY  
DEPARTMENT OF STATISTICS MALAYSIA

## GROSS DOMESTIC PRODUCT FIRST QUARTER 2017



Department of Statistics, Malaysia  
<https://www.dosm.gov.my>

<https://www.facebook.com/StatsMalaysia>

<https://twitter.com/StatsMalaysia>

#fanSTATStic

# MALAYSIA ECONOMY

**Q1 2017**



### GDP GROWTH RATE

 **5.6%**



*GDP at Constant 2010 Prices*

**RM 280.1 billion**



*GDP at Current Prices*

**RM 324.6 billion**



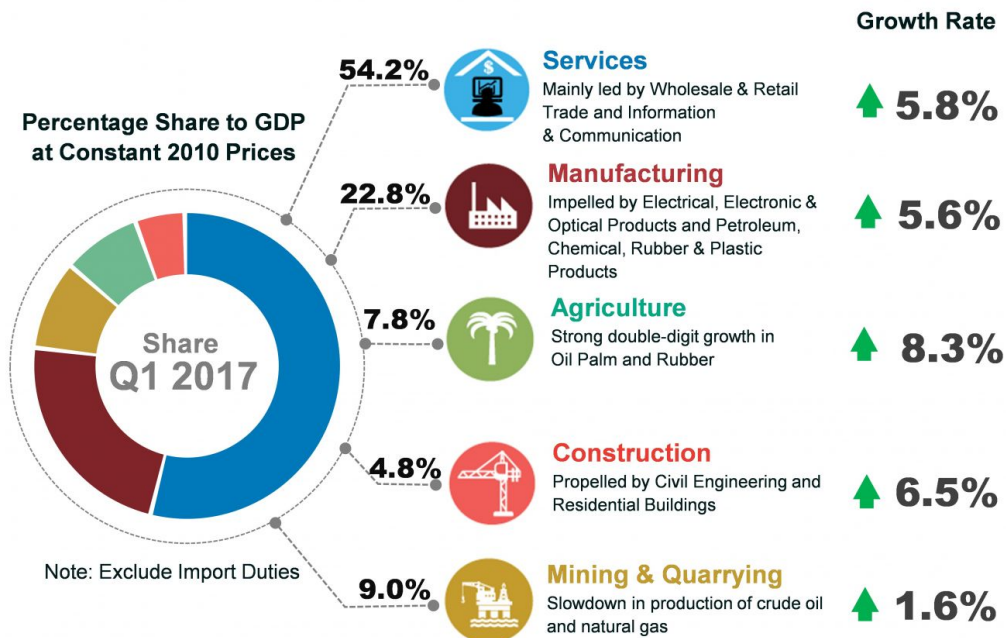
*GNI per capita  
at Current Prices*

**RM 39,315**

- Malaysia's economy grew at 5.6 per cent with a value of RM 280.1 billion at constant prices and RM324.6 billion at current prices.

# PRODUCTION

Key contributors to the economy...  
**Services, Manufacturing and Agriculture**



# EXPENDITURE



## PRIVATE FINAL CONSUMPTION EXPENDITURE

Grew to  
**6.6 per cent**

Share: **54.3%**

Contributed by...



## Gross Fixed Capital Formation

**↑ 10.0%**

Stimulated by Machinery & Equipment

**21.8%**



**3.8%**



**1.4%**



Private sector was the key driver of investments in Q1 2017



**71.7%**

of investment was from Private Sector



• **Government Final Consumption Expenditure**  
Higher spending on supplies and services



• **Exports**  
Strong performance in the Exports of Goods



• **Imports**  
Improvement in Imports of Goods while Services declined

Growth Rate

**↑ 7.5%**

**↑ 9.8%**

**↑ 12.9%**

Sources: Department of Statistics, Malaysia

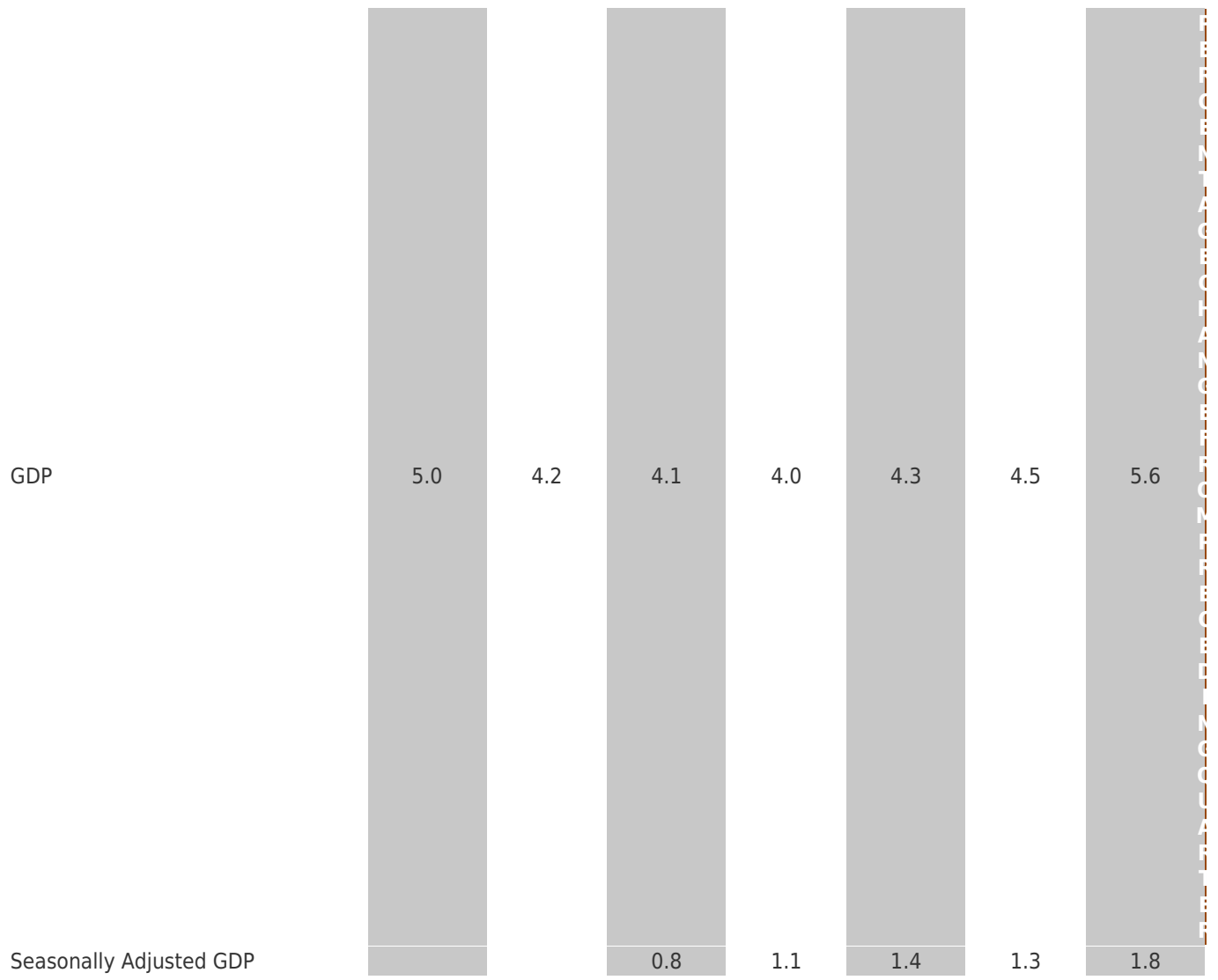
In the first quarter of 2017, Malaysia's economy remained resilient at 5.6 per cent (Q4 2016: 4.5%). On a quarter-on-quarter seasonally adjusted, the GDP for this quarter grew at 1.8 per cent.

All sectors on the production side posted a favourable growth except for Mining and Quarrying sector. Services, Manufacturing and Agriculture were the major drivers of the economy.

On the expenditure side, Private Final Consumption Expenditure and Gross Fixed Capital Formation were the main catalyst for the growth.

Table 1: GDP at Constant 2010 Prices

PERCENTAGE CHANGE FROM CORRESPONDING QUARTER OF PRECEDING YEAR						
2015	2016	Q1 2016	Q2 2016	Q3 2016	Q4 2016	Q1 2017



## **GDP by Production Approach**

**Services** sector recorded a steady growth of 5.8 per cent in this quarter (Q4 2016: 5.5%) mainly led by Wholesale & Retail Trade which expanded to 6.3 per cent and Information & Communication remained sound by posting a growth of 8.2 per cent. Furthermore, Business Services grew at 8.4 per cent due to a favourable momentum in Professional activities.

**Manufacturing** sector rose to 5.6 per cent, a faster pace than 4.7 per cent in the previous quarter which was spearheaded by Electrical, Electronic & Optical Products (7.9%), mainly in production of printed circuit boards and semiconductors. This sector performance was further supported by Petroleum, Chemical, Rubber & Plastic Products (3.1%) and Vegetable and Animal Oils & Fats and Food Processing (8.2%).

**Agriculture** sector rebounded to a sturdy growth of 8.3 per cent on a year-on-year basis after posting a negative growth of 2.5 per cent in the previous quarter. The turnaround of Agriculture sector was impelled by Oil Palm which accelerated to a double-digit growth of 17.7 per cent (Q4 2016: -7.2%) following a higher yield of fresh fruit bunches in this quarter. The growth was also supported by Rubber at 23.5 per cent (Q4 2016: 1.1%) due to a higher price and production. Nevertheless, Forestry & Logging and Marine Fishing declined to negative 11.1 per cent and 4.1 per cent respectively.

## **GDP by Expenditure Approach**

**Private Final Consumption Expenditure** grew 6.6 per cent (Q4 2016: 6.1%) backed by the consumption on Food & Non-Alcoholic Beverages, Communication and Housing, Water, Electricity, Gas & Other Fuels.

**Gross Fixed Capital Formation (GFCF)** soared to 10.0 per cent from 2.4 per cent in the previous quarter. The better growth in GFCF was stimulated by Machinery & Equipment which rose to 21.8 per cent from 2.9 per cent in the fourth quarter of 2016. Meanwhile, Structure and Other Asset grew at 3.8 per cent and 1.4 per cent, respectively.

**Exports** rose at 9.8 per cent in this quarter. The favourable growth was reflected by the strong performance in the exports of goods. **Imports** escalated to 12.9 per cent (Q4 2016: 1.6%) due to an increased in imports of goods while services declined in this quarter.

## **RELEASED BY:**

**DR. MOHD UZIR MAHIDIN**  
**CHIEF STATISTICIAN MALAYSIA**  
**DEPARTMENT OF STATISTICS, MALAYSIA**  
**#myHariBulan# #myBulan# #myTahun#**

## **Contact person:**

Ho Mei Kei  
Public Relation Officer  
Corporate and User Services Division  
Department of Statistics, Malaysia  
**Tel** : +603-8885 7942  
**Fax** : +603-8888 9248  
**Email** : mkho[at]stats.gov.my

## **Contact person:**

Baharudin Mohamad  
Public Relation Officer

Strategic Communication and International Division  
Department of Statistics Malaysia  
Tel : +603-8090 4681  
Fax : +603-8888 9248  
Email : baharudin[at]dosm.gov.my

**Copyright ©2025 Department of Statistics Malaysia Official Portal. All Rights Reserved.**