



MINISTRY OF ECONOMY
DEPARTMENT OF STATISTICS MALAYSIA

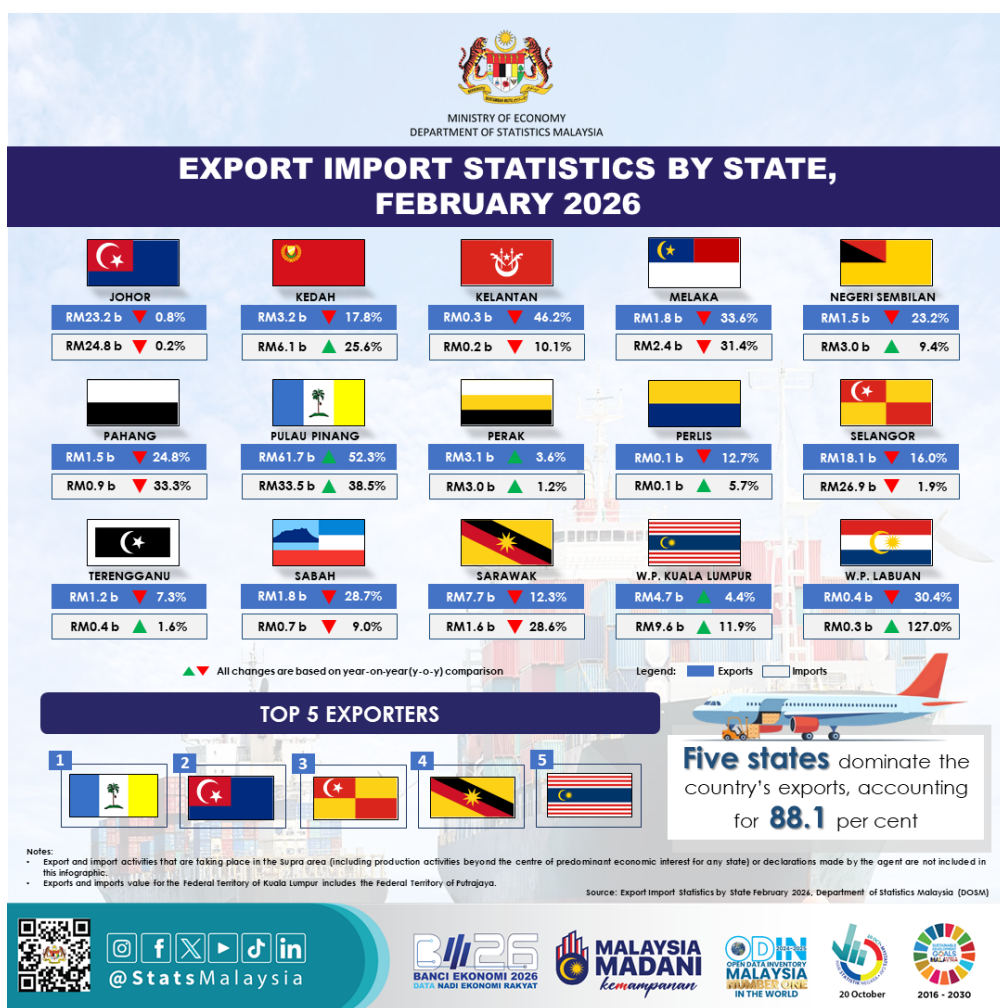
EXPORT IMPORT STATISTICS BY STATE, FEBRUARY 2026

Pulau Pinang, Johor, Selangor, Sarawak and W.P. Kuala Lumpur contributed 88.1 per cent of the total exports in February 2026

- Malaysia's total trade for February 2026 amounted to RM245.2 billion with exports and imports recording RM131.0 billion and RM114.2 billion, respectively.
- Exports was valued at RM131.0 billion in February 2026, increased RM12.7 billion (+10.8%) as compared to the same month of the previous year. The increase in exports was attributed to the higher exports in Pulau Pinang (+RM21.2 billion), W.P. Kuala Lumpur (+RM198.1 million) and Perak (+RM108.1 million). However, exports decreased in Selangor by RM3.4 billion, Sarawak (-RM1.1 billion), Melaka (-RM928.2 million), Sabah (-RM743.7 million), Kedah (-RM682.1 million), Pahang (-RM505.9 million), Negeri Sembilan (-RM442.0 million), Kelantan (-RM225.3 million), Johor (-RM197.0 million), W.P. Labuan (-RM191.9 million), Terengganu (-RM98.0 million) and Perlis (-RM14.0 million).
- Pulau Pinang remained as the top exporter with a contribution of 47.1 per cent, followed by Johor (17.7%), Selangor (13.8%), Sarawak (5.9%) and W.P. Kuala Lumpur (3.6%).
- At the same time, imports in February 2026 increased RM8.6 billion (+8.2%)

as compared to the same month in year 2025. The increase in imports was attributed by the higher imports in most states such as Pulau Pinang (+RM9.3 billion), Kedah (+RM1.2 billion), W.P. Kuala Lumpur (+RM1.0 billion), Negeri Sembilan (+RM255.4 million), W.P. Labuan (+RM140.4 million), Perak (+RM35.9 million), Terengganu (+RM6.8 million) and Perlis (+RM5.0 million). However, imports decreased in Melaka by RM1.1 billion, Sarawak (-RM645.3 million), Selangor (-RM519.8 million), Pahang (-RM472.2 million), Sabah (-RM66.0 million), Johor (-RM51.4 million) and Kelantan (-RM25.5 million).

- Pulau Pinang dominates Malaysia's imports with a share of 29.3 per cent, followed by Selangor (23.5%), Johor (21.7%), W.P. Kuala Lumpur (8.4%) and Kedah (5.4%).



Contact person:

Baharudin Mohamad
 Public Relation Officer
 Strategic Communication and International Division
 Department of Statistics Malaysia
 Tel : +603-8090 4681
 Fax : +603-8888 9248
 Email : baharudin[at]dosm.gov.my

