



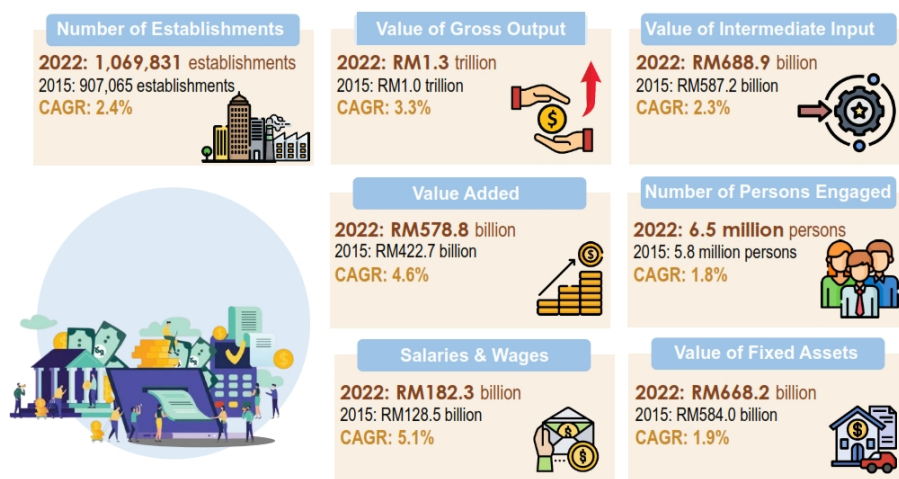
MINISTRY OF ECONOMY
DEPARTMENT OF STATISTICS MALAYSIA

ECONOMIC CENSUS 2023: PROFILE OF SMALL AND MEDIUM ENTERPRISES



MAIN STATISTICS

MICRO, SMALL AND MEDIUM ENTERPRISES



HIGHEST VALUE ADDED

By Sector

Services

2022: RM433.3 billion
2015: RM295.2 billion CAGR: 5.6%

Manufacturing

2022: RM87.1 billion
2015: RM82.1 billion CAGR: 0.8%

Construction

2022: RM31.9 billion
2015: RM24.3 billion CAGR: 4.0%

By State

Selangor

2022: RM208.0 billion
2015: RM119.8 billion CAGR: 8.2%

W.P. Kuala Lumpur

2022: RM113.2 billion
2015: RM96.4 billion CAGR: 2.3%

Johor

2022: RM58.7 billion
2015: RM44.6 billion CAGR: 4.0%

CAGR 2022/2015

Source: Economic Census 2023, Micro, Small and Medium Enterprises
Department of Statistics Malaysia (DOSM)

The number of MSMEs establishments expanded from 907,065 to 1,069,831, with a compound annual growth rate (CAGR) of 2.4 per cent. The Services sector led with 936,793 establishments (87.6%), followed by Construction with 69,015 (6.5%) and Manufacturing with 51,481 (4.8%).

The value of gross output increased from RM1.0 trillion in 2015 to RM1.3 trillion in 2022, reflecting a CAGR of 3.3 per cent. This growth was supported by a stronger performance in value added, which rose from RM422.7 billion to RM578.8 billion, with a CAGR of 4.6 per cent.

In the labour market, salaries and wages experienced an upward trend, increasing from RM128.5 billion in 2015 to RM182.3 billion in 2022, represents an annual growth rate of 5.1 per cent. Despite this rise, the number of persons engaged in the labour force grew at a comparatively slower pace, with an annual increase of 1.8 per cent, moving from 5.8 million in 2015 to 6.5 million persons in 2022.

Meanwhile, the value of fixed assets across the economy demonstrated moderate growth, rising from RM584.0 billion in 2015 to RM668.2 billion in 2022, with a CAGR of 1.9 per cent.

At the state level, Selangor experienced impressive value-added growth, expanding at a CAGR of 8.2 per cent, from RM119.8 billion in 2015 to RM208.0 billion in 2022, strengthening its role as a key contributor to Malaysia's MSMEs. W.P. Kuala Lumpur saw a steady annual growth of 2.3 per cent (RM113.2 billion), while Johor recorded favourable growth of 4.0 per cent (RM58.7 billion), highlighting their continued contributions to regional economic performance.

The full publication of the Economic Census 2023 for Profile of Micro, Small and Medium Enterprises can be downloaded through eStatistik on the DOSM portal, www.dosm.gov.my.

Contact person:

Baharudin Mohamad
Public Relation Officer
Strategic Communication and International Division
Department of Statistics Malaysia
Tel : +603-8090 4681
Fax : +603-8888 9248
Email : baharudin[at]dosm.gov.my

Copyright ©2025 Department of Statistics Malaysia Official Portal. All Rights Reserved.