



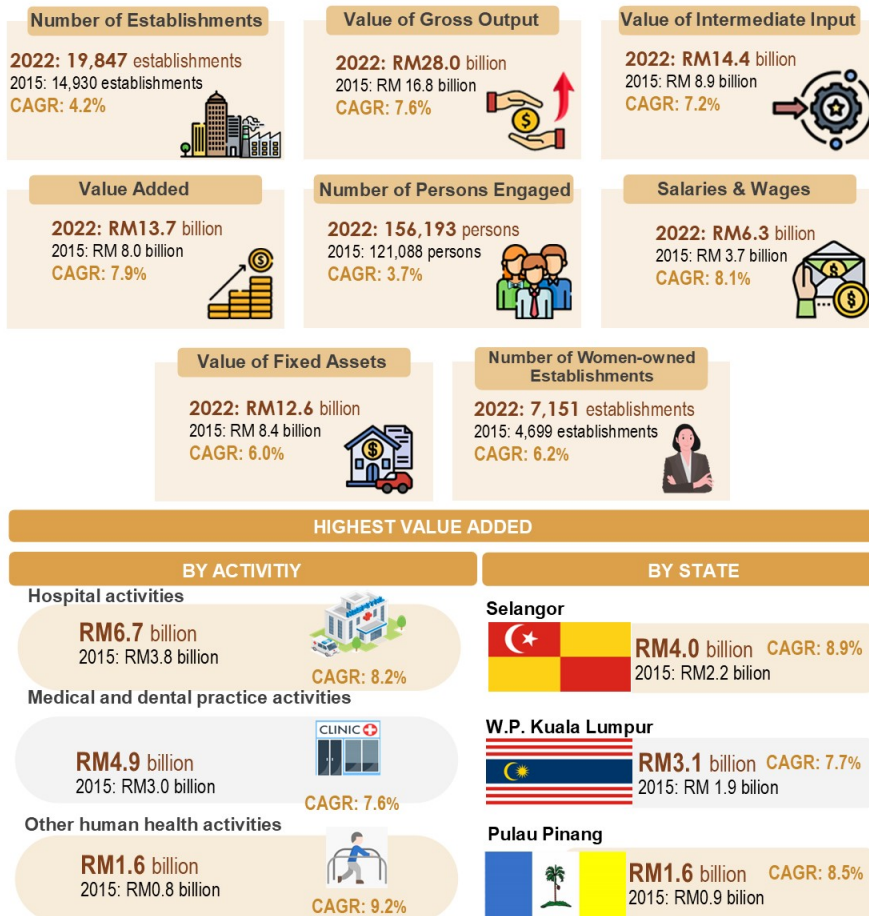
MINISTRY OF ECONOMY
DEPARTMENT OF STATISTICS MALAYSIA

ECONOMIC CENSUS 2023: HEALTH AND SOCIAL WORKS SERVICES SECTOR



MAIN STATISTICS

PRIVATE HEALTH AND SOCIAL WORK SERVICES



CAGR 2022/2015

Source: Economic Census 2023, Private Health and Social Work Services
Department of Statistics Malaysia (DOSM)

This publication presents statistics on Private health and social work services based on Economic Census undertaken in 2023 for reference year 2022. Health services encompass of hospital services, maternity homes, general medical services, specialised medical services, dental services, dialysis centres, medical laboratories, acupuncture centres, herbalist and homeopathy and other human health services. Meanwhile, social work comprises of residential care, social work without accommodation and child day-care activities. Main statistics such as the number of establishments, value of gross output, value of intermediate input, value added, number of persons engaged, salaries & wages and fixed assets are also presented in this publication. In 2022, the number of establishments operating in this subsector was 19,847 establishments with an annual growth rate of 4.2 per cent (2015:14,930 establishments). This subsector generated a gross output of RM28.0 billion, an increase of RM11.1 billion between 2015 and 2022. In parallel with the growth of gross output, the value of intermediate input also increased by RM5.4 billion to record RM14.4 billion with an annual growth rate 7.2 per cent, resulting in value added of RM13.7 billion in 2022 (2015: RM8.0 billion). A Total of 156,193 persons engaged involved in this subsector compared to 121,088 persons in 2015 with an annual growth rate of 3.7 per cent. During the same period, the salaries & wages also grew by 8.1 per cent annually to reach RM6.3 billion in 2022 (2015: RM3.7 billion). Meanwhile, value of fixed assets owned by establishments for Private health and social work services in 2022 amounted to RM12.6 billion (2015: RM8.4 billion), indicates an annual growth rate of 6.0 per cent.

Contact person:

Baharudin Mohamad

Public Relation Officer

Strategic Communication and International Division

Department of Statistics Malaysia

Tel : +603-8090 4681

Fax : +603-8888 9248

Email : baharudin[at]dosm.gov.my

Copyright ©2025 Department of Statistics Malaysia Official Portal. All Rights Reserved.