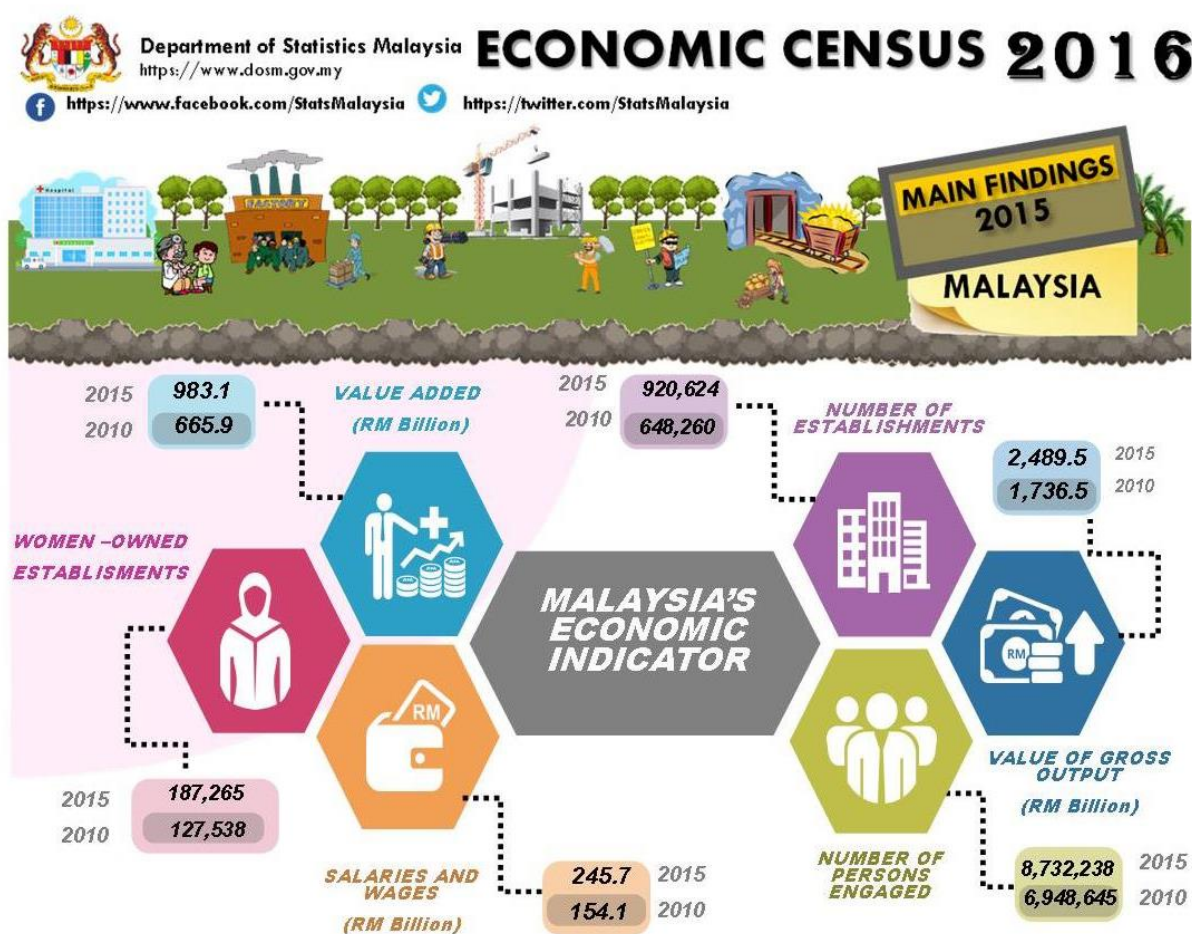




MINISTRY OF ECONOMY
DEPARTMENT OF STATISTICS MALAYSIA

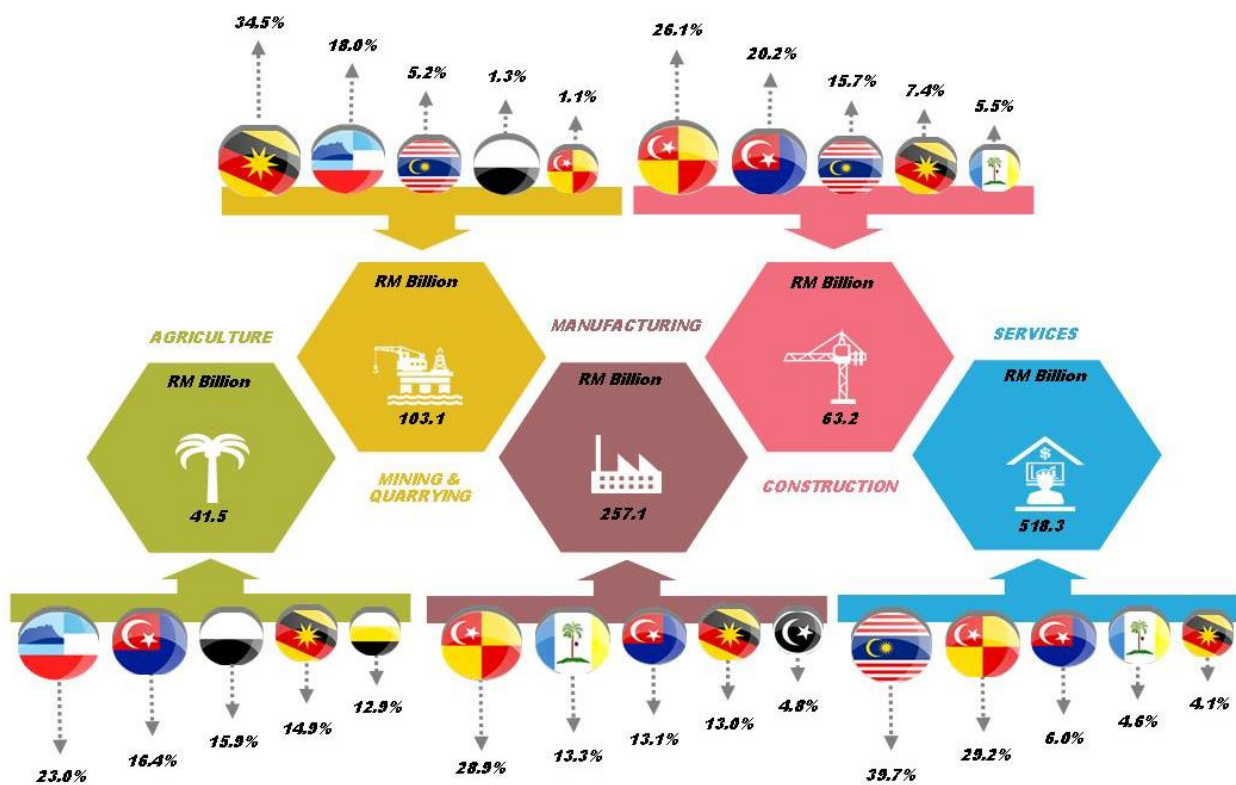
ECONOMIC CENSUS 2016 - MYSTATE STATISTICS

Main Findings MyState Statistics



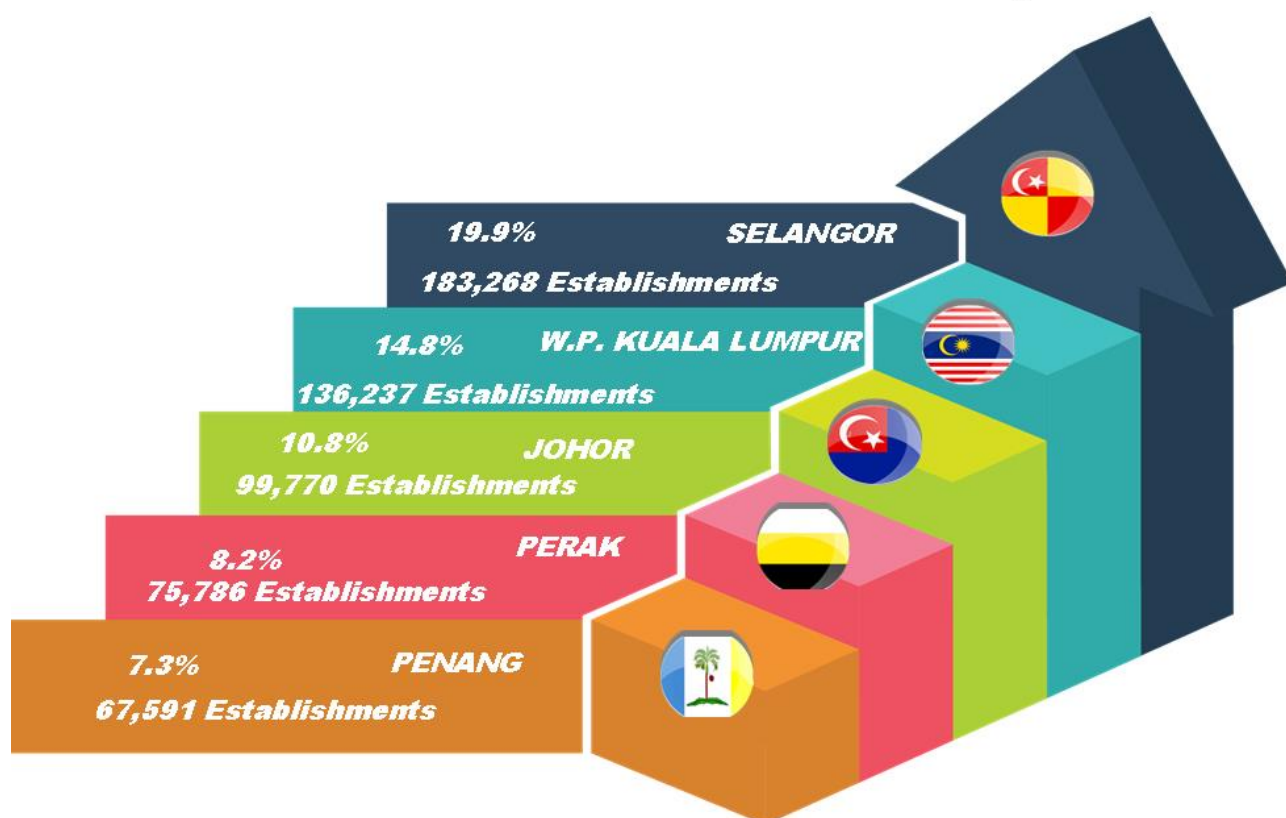
Gross Domestic Product (GDP) at constant price for Malaysia registered a growth of 5.0 per cent in 2015 (2010: 5.5%). Findings from Economic Census (BE) 2016 showed that value added in 2015 increased to RM983.1 billion (2010: RM665.9 billion) with an annual growth rate of 8.1 per cent. A total of 920,624 establishments were covered in 2015 compared to 648,260 establishments in 2010. Value of gross output amounted to RM2,489.5 billion with an annual growth of 7.5 per cent per annum for the reference period.

In 2015, the number of persons engaged was recorded at 8.7 million persons (2010: 6.9 million persons) with salaries & wages paid amounting to RM245.7 billion (2010: RM154.1 billion). The number of women-owned establishments was 187,265 establishments (2010: 127,538) representing 20.3 per cent of women's participation in the economy in 2015.

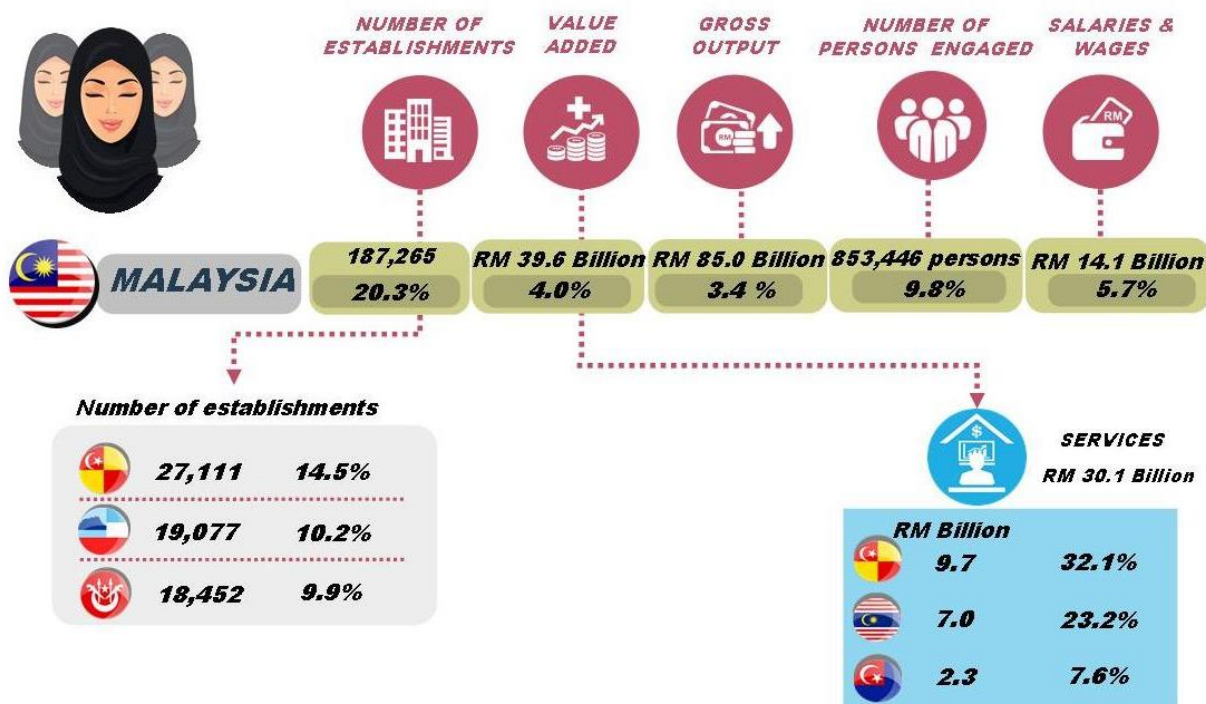


Services sector spurred the Malaysia's economic performance in 2015 with a value added of RM518.3 billion with W.P. Kuala Lumpur recorded the highest value of RM205.5 billion (39.7%). This was followed by Selangor RM151.4 billion (29.2%) and Johor with RM31.2 billion (6.0%).

920,624 establishments



The number of establishments operated in 2015 was driven by the state of Selangor with 183,268 establishments (19.9%). This was followed by W.P. Kuala Lumpur with 136,237 establishments (14.8%) and Johor with 99,770 establishments (10.8%). The Services sector dominated the total number of establishments for the three states where Selangor recorded 164,295 establishments (89.6%), W.P. Kuala Lumpur 125,327 establishments (92.0%) and Johor 84,599 establishments (84.8%).



The number of women-owned establishments in 2015 for Malaysia was 187,265 establishments or 20.3 per cent of the total number of establishments in Malaysia. The value added generated by the women-owned establishments was 4.0 per cent (RM39.6 billion) while the gross output was 3.4 per cent (RM85.0 billion). A total of 853,446 persons (9.8%) were employed by women-owned establishments with salaries & wages of RM14.1 billion (5.7%).

In terms of comparison by state, the highest number of women-owned establishments was recorded by Selangor with 14.5 per cent (27,111 establishments), followed by Sabah (10.2%; 19,077 establishments) and Kelantan (9.9%; 18,452 establishments). Number of women-owned establishments was dominated by Services sector with a value added of RM30.1 billion (76.1%) where Selangor recorded the highest value added with RM9.7 billion (32.1%), followed by W.P. Kuala Lumpur RM7.0 billion (23.2%) and Johor RM2.3 billion (7.6%).

The detailed statistics by state can be accessed through the eStatistik application in the Department of Statistics, Malaysia website, www.dosm.gov.my.

Note: Data by state excludes Extraction of crude petroleum and natural gas sub-sector.

Released By:

THE OFFICE OF CHIEF STATISTICIAN MALAYSIA
DEPARTMENT OF STATISTICS, MALAYSIA
#myHariBulan# #myBulan# #myTahun#

Contact person:

Ho Mei Kei
Public Relation Officer
Corporate and User Services Division
Department of Statistics, Malaysia
Tel : +603-8885 7942
Fax : +603-8888 9248
Email : mkho[at]stats.gov.my

Contact person:

Baharudin Mohamad
Public Relation Officer
Strategic Communication and International Division
Department of Statistics Malaysia
Tel : +603-8090 4681
Fax : +603-8888 9248
Email : baharudin[at]dosm.gov.my

Copyright ©2026 Department of Statistics Malaysia Official Portal. All Rights Reserved.