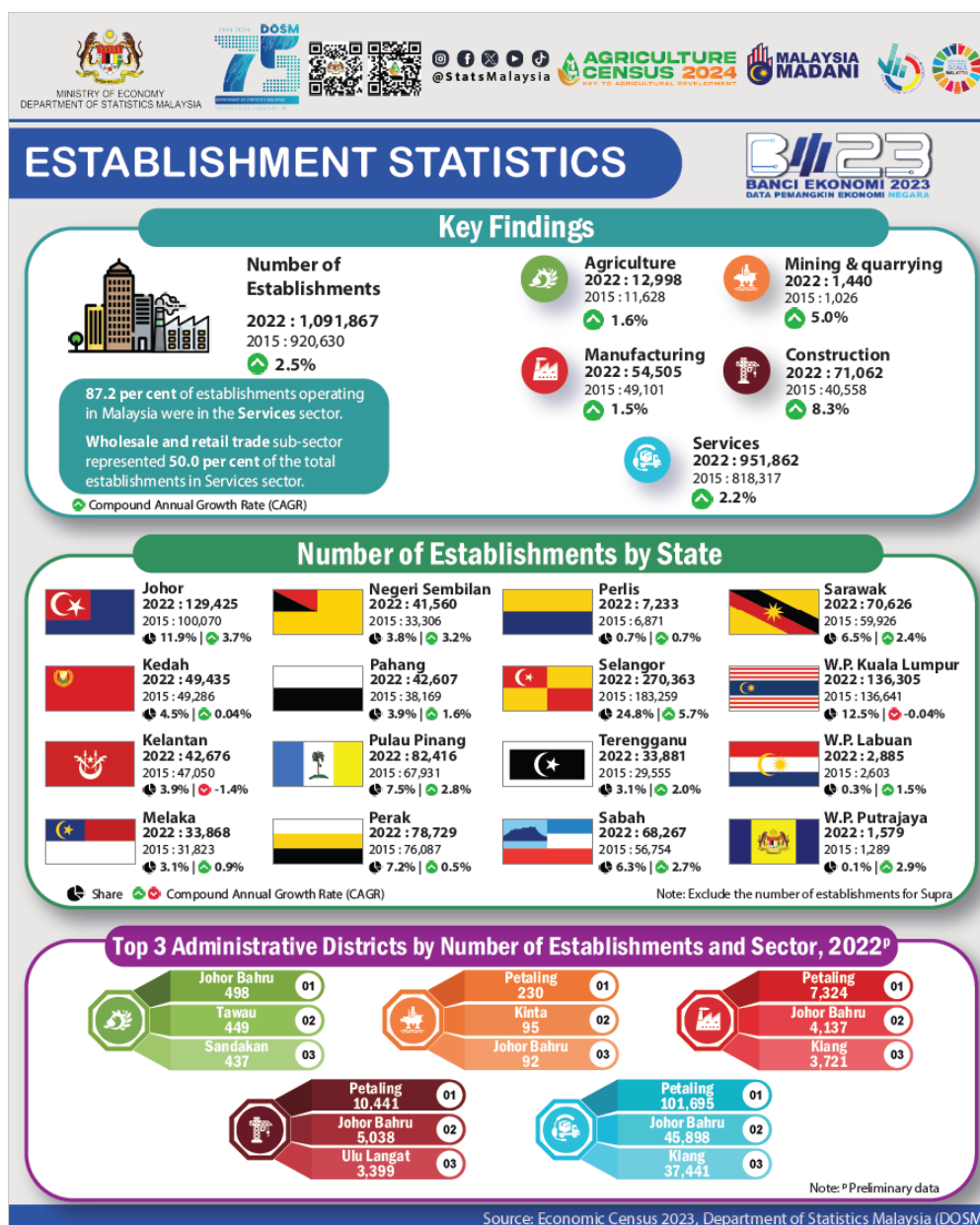




MINISTRY OF ECONOMY
DEPARTMENT OF STATISTICS MALAYSIA

ECONOMIC CENSUS 2023 ESTABLISHMENT STATISTICS



Selangor, W.P. Kuala Lumpur and Johor collectively accounted for 49.1 per cent of the total number of establishments in Malaysia in 2022

The number of establishments operating in 2022 stood at 1,091,867 establishments as compared to 920,630 establishments in 2015 with an annual growth rate of 2.5 per cent. The Services sector was the highest contributor to the number of establishments with a share of 87.2 per cent, followed by the Construction sector (6.5%) and the Manufacturing sector (5.0%).

Selangor recorded the highest number of establishments in 2022 with 270,363 establishments, followed by W.P. Kuala Lumpur (136,305 establishments) and Johor (129,425 establishments). These three states collectively accounted for 49.1 per cent of the total number of establishments in Malaysia.

In terms of sectoral, Services sector was led by Selangor, with 232,206 establishments. Similarly, Selangor dominated the Manufacturing, Construction and Mining & quarrying sectors with 16,808 establishments, 19,770 establishments and 391 establishments, respectively. For the Agriculture sector, Johor had the highest number of establishments with 2,254 establishment.

The three states with the highest number of establishments were Selangor, W.P. Kuala Lumpur and Johor. This trend is also noticeable at the district level, where Johor Bahru and Petaling had the highest number of establishments across all sectors. These two districts have significant contribution in the Services and Construction sectors.

In the Services sector, Petaling recorded the highest number of establishments in 2022, with (101,695 establishments), followed by Johor Bahru (45,898 establishments). For the Construction sector, these districts also are the highest number of establishments were Petaling with 10,441 establishments and Johor Bahru (5,038 establishments).

Petaling and Johor Bahru remained at the top positions in the Manufacturing sector, with 7,324 establishments and 4,137 establishments, respectively. In the Mining & quarrying sector, Petaling ranked the highest with 230 establishments out of 1,440 establishments. Meanwhile, for the Agriculture sector, Johor Bahru recorded the highest number of establishments, with 498 establishments out of 12,998 establishments.

Contact person:

Baharudin Mohamad
Public Relation Officer
Strategic Communication and International Division
Department of Statistics Malaysia
Tel : +603-8090 4681
Fax : +603-8888 9248
Email : baharudin[at]dosm.gov.my

Copyright ©2025 Department of Statistics Malaysia Official Portal. All Rights Reserved.