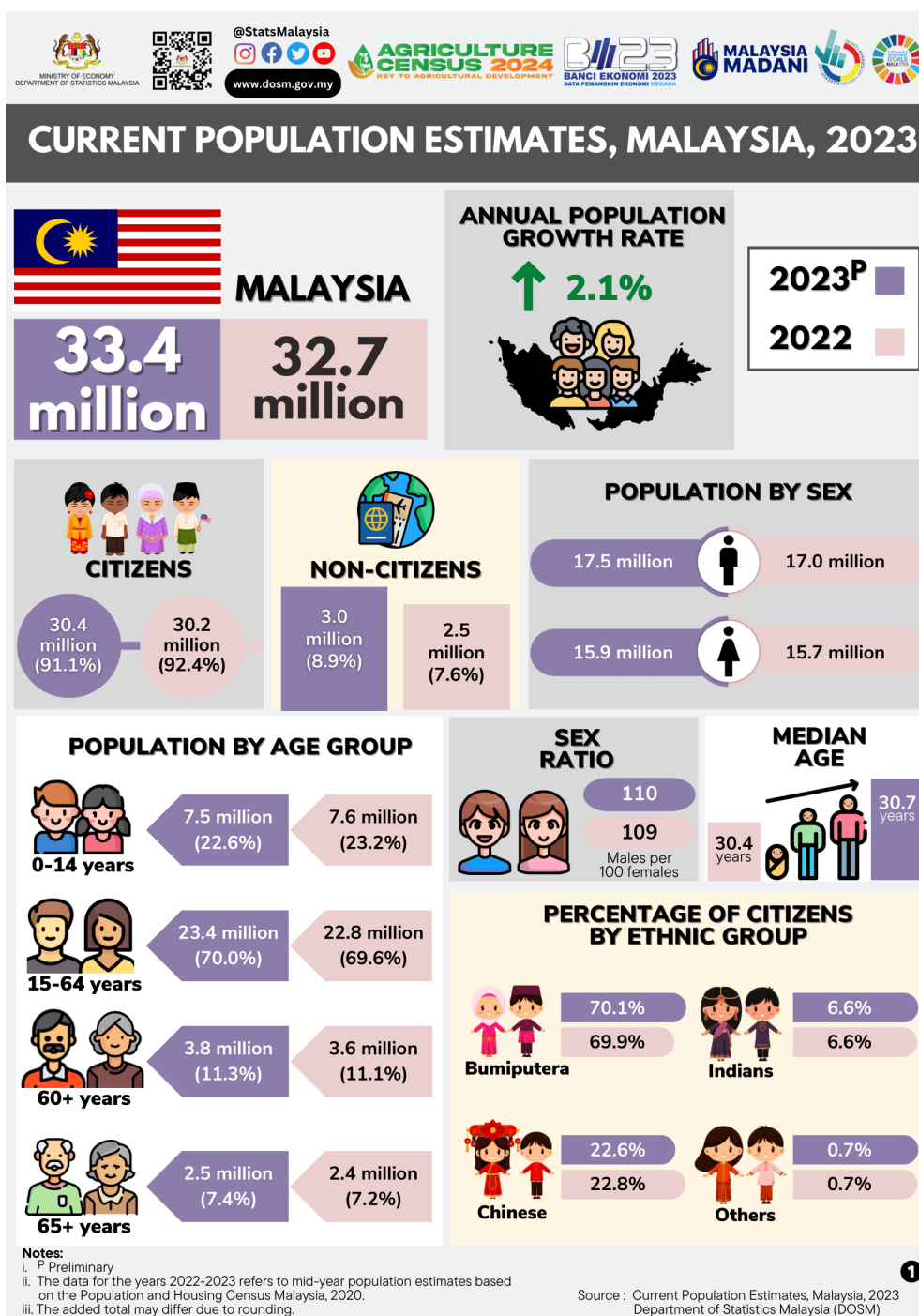




MINISTRY OF ECONOMY
DEPARTMENT OF STATISTICS MALAYSIA

CURRENT POPULATION ESTIMATES, MALAYSIA, 2023



POPULATION SIZE ANNUAL POPULATION GROWTH RATE

The total population of Malaysia in 2023 was estimated at 33.4 million as compared to 32.7 million in 2022 with an annual population growth rate of 2.1 per cent. The increase in population growth rate was due to the higher number of Non-citizens which increased from 2.5 million (2022) to 3.0 million (2023). The Citizens population increased from 30.2 million in 2022 to 30.4 million in 2023 with a marginal growth of 0.7 per cent (2022: 0.6%).

The increase in population growth rate was also occurred in other countries such as Singapore (3.4%), Australia (1.9%), Germany (1.3%), Canada (0.7%) and the United States of America (0.5%).

Three states namely Sabah (5.1%), W.P. Labuan (2.6%) and Selangor (2.2%) have surpassed the national growth rate of 2.1 per cent. The three states with the highest population composition in 2023 were Selangor (21.6%), followed by Johor (12.3%) and Sabah (10.8%). On the other hand, W.P. Labuan and W.P. Putrajaya recorded the lowest population composition at 0.3 per cent and 0.4 per cent respectively.

COMPOSITION OF POPULATION BY CITIZENSHIP

The composition of Citizens population decreased from 92.4 per cent (2022) to 91.1 per cent in 2023. This attributed to the increased in the composition of the Non-citizens population from 7.6 per cent to 8.9 per cent during the same period. The increase is in line with the re-opening of national borders from 1 April 2022 and the implementation of the Employment Recalibration Programme 2.0 since January 2023.

POPULATION BY SEX

Males outnumbered females in 2023 with 17.5 million and 15.9 million respectively. The sex ratio for overall population was 110 males for every 100 females. For the period of 2022-2023, the sex ratio for Citizens remained at 103 while Non-citizens declined from 227 to 226 males for every 100 females.

AGE STRUCTURE

The composition of population aged 15-64 years (working age) increased from 69.6 per cent in 2022 to 70.0 per cent in 2023. The percentage of the population aged 65 years and over (old age) increased from 7.2 per cent to 7.4 per cent for the same period. Meanwhile the composition of population aged 0-14 years (young age) in 2023 decreased to 22.6 per cent as compared to 23.2 per cent in 2022.

Contact person:

Baharudin Mohamad

Public Relation Officer

Strategic Communication and International Division

Department of Statistics Malaysia

Tel : +603-8090 4681

Fax : +603-8888 9248

Email : [baharudin\[at\]dosm.gov.my](mailto:baharudin[at]dosm.gov.my)

Copyright ©2025 Department of Statistics Malaysia Official Portal. All Rights Reserved.