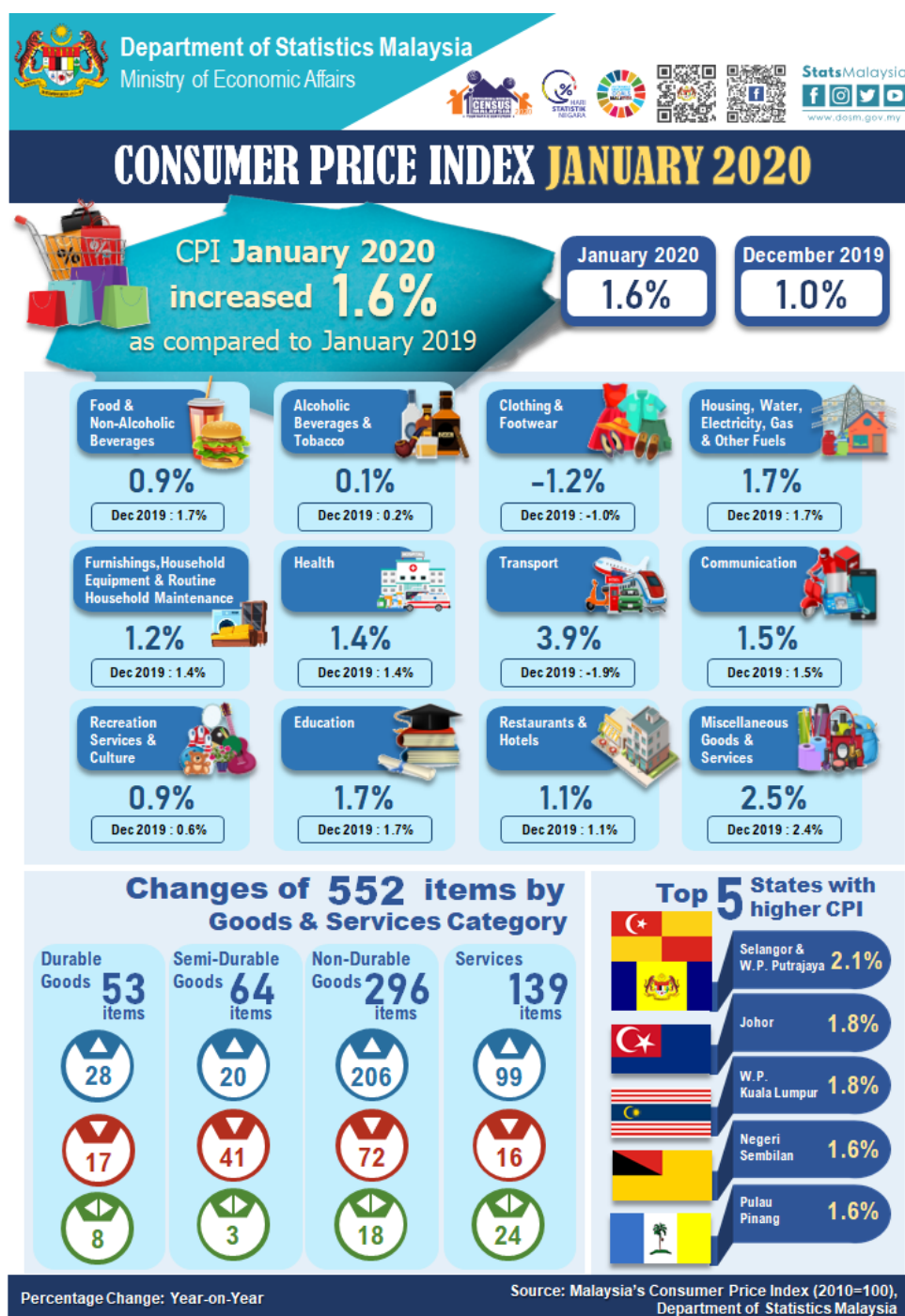




MINISTRY OF ECONOMY  
DEPARTMENT OF STATISTICS MALAYSIA

## CONSUMER PRICE INDEX MALAYSIA JANUARY 2020

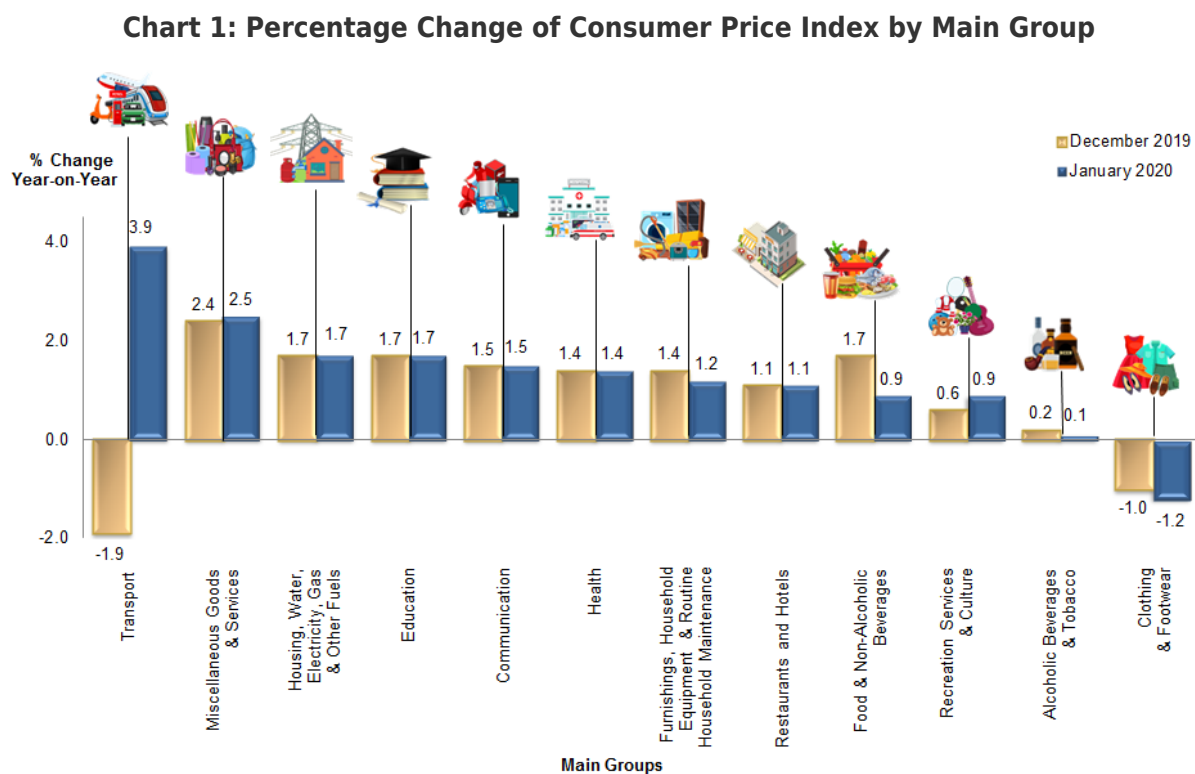




## SUMMARY OF FINDINGS

Consumer Price Index (CPI) increased **1.6 per cent** in January 2020 to 122.4 as against 120.5 in the same month of the preceding year. The increase in the overall index was driven by the index of **Transport (3.9%)**, **Miscellaneous Goods & Services (2.5%)**, **Housing, Water, Electricity, Gas & Other Fuels (1.7%)**, **Education (1.7%)** and **Communication (1.5%)**. (Chart 1)

The higher average price of RON 95 in January 2020 which recorded RM2.08 per litre as compared to RM1.98 in January 2019 had contributed to the increase of the Transport and overall index. In addition, the average price of RON 97 increased to RM2.58 per litre as compared to RM2.28 while Diesel increased to RM2.18 per litre from RM2.12 in corresponding month of the preceding year.



On a monthly basis, CPI rose **0.1 per cent** as compared to December 2019. The increase was mainly supported by the index of **Education (0.4%)**, **Miscellaneous Goods & Services (0.4%)**, **Health (0.2%)** and **Recreation Services & Culture (0.2%)**.

### Index for Sub-Groups Food and Non-Alcoholic Beverages

The index for **Food & Non-Alcoholic Beverages** increased **0.9 per cent** in January 2020 as compared to the same month of the previous year. The increase was attributed by the food sub-group of **Vegetables (5.7%)**, **Food Products not elsewhere classified (1.8%)** and **Fish & Seafood (1.2%)**.

Among the index of goods which recorded price increases in most states were **Small Onion (35.1%)**, **Garlic (24.6%)** and **Big Onion (22.9%)**.

The index for **Food Away From Home** increased **1.7 per cent** in January 2020 as against January 2019. The increase in price of Shrimp Side Dishes, Burger and Nasi Lemak contributed to the increase of the index of this sub-group. (Table 1)

**Table 1: Percentage Change of Food & Non-Alcoholic Beverages Sub-Groups**

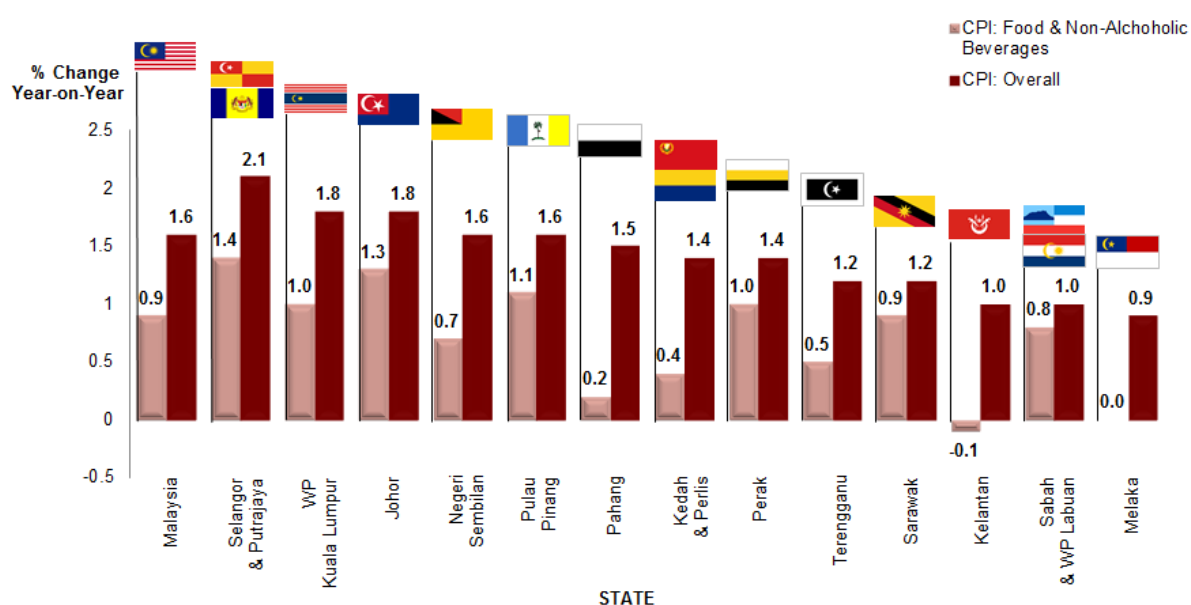
Sub-groups		Index	Year-on-Year Percentage Change		Month-on-Month Percentage Change	
	Weight	Jan 2020	Dec 2019/ Dec 2018	Jan 2020/ Jan 2019	Dec 2019/ Nov 2019	Jan 2020/ Dec 2019
<b>Food &amp; Non-Alcoholic Beverages</b>	<b>29.5</b>	<b>134.1</b>	<b>1.7</b>	<b>0.9</b>	<b>0.5</b>	<b>0.1</b>
<b>Food</b>	<b>28.4</b>	<b>135.1</b>	<b>1.7</b>	<b>0.9</b>	<b>0.4</b>	<b>0.1</b>
<b>Food At Home</b>	<b>16.9</b>	<b>131.2</b>	<b>1.1</b>	<b>0.4</b>	<b>0.6</b>	<b>0.2</b>
Rice, Bread & Other Cereals	3.5	111.1	0.6	0.7	0.1	0.1
Meat	2.5	124.1	-3.0	-4.5	0.2	0.4
Fish & Seafood	4.0	155.2	2.5	1.2	1.3	0.9
Milk & Eggs	1.5	123.8	-1.5	-2.7	-1.0	-1.0
Oils & Fats	0.6	118.1	0.0	0.0	0.1	0.1
Fruits	1.2	134.4	1.4	0.7	0.4	0.4
Vegetables	2.1	138.8	5.7	5.7	2.3	-0.1
Sugar, Jam, Honey, Choc. & Confectionery	0.6	134.8	0.4	0.1	0.0	-0.1
Food Products n.e.c.	1.0	133.6	1.8	1.8	0.2	0.2
Food Away From Home	11.5	141.4	2.5	1.7	0.2	0.1
<b>Coffee, Tea, Cocoa &amp; Non-Alcoholic Beverages</b>	<b>1.1</b>	<b>112.7</b>	<b>1.4</b>	<b>1.4</b>	<b>-0.3</b>	<b>0.3</b>

### Consumer Price Index by States

Three states namely Selangor & Wilayah Persekutuan Putrajaya (2.1%), Wilayah Persekutuan Kuala Lumpur (1.8%) and Johor (1.8%) surpassed the national CPI rate of 1.6 per cent in January 2020 as compared to the same month in the preceding year.

All states except Kelantan registered an increase in the index of Food & Non-Alcoholic Beverages. The highest increase was recorded by Selangor & Wilayah Persekutuan Putrajaya (1.4%) followed by Johor (1.3%), Pulau Pinang (1.1%), Wilayah Persekutuan Kuala Lumpur (1.0%) and Perak (1.0%) and it surpassed the national index of 0.9 per cent for Food & Non-Alcoholic Beverages in January 2020. (Chart 2)

**Chart 2: Percentage Change of Food & Non-Alcoholic Beverages by State**



### Core Index

Core index rose 1.7 per cent in January 2020 as compared to the same month of the previous year. Among

the major groups which influenced the increase were Miscellaneous Goods & Services (2.5%), Housing, Water, Electricity, Gas & Other Fuels (2.2%), Education (1.7%), Communication (1.5%), Food & Non-Alcoholic Beverages (1.4%), Transport (1.4%) and Health (1.4%).

Core index excludes most volatile items of fresh food as well as administered prices of goods and services. (Table 2)

**Table 2: Percentage Change of Headline CPI, Seasonally Adjusted Index and Core Index by Main Groups**

Main Group	Weight	HEADLINE CPI			SEASONALLY ADJUSTED INDEX		CORE INDEX	
		Index	Percentage Change		Index	Month-on-Month Percentage Change	Core Index Weight	Year-on-Year Percentage Change
		Jan 2020	Jan 2020/ Dec 2019	Jan 2020/ Jan 2019	Jan 2020	Jan 2020/ Dec 2019	Jan 2020	Jan 2020/ Jan 2019
<b>Total</b>	<b>100</b>	<b>122.4</b>	<b>0.1</b>	<b>1.6</b>	<b>122.4</b>	<b>0.1</b>	<b>100.0</b>	<b>1.7</b>
Food & Non-Alcoholic Beverages	29.5	134.1	0.1	0.9	133.4	-0.5	26.5	1.4
Alcoholic Beverages & Tobacco	2.4	167.7	-0.1	0.1	167.7	-0.1	-	-
Clothing and Footwear	3.2	93.7	-0.1	-1.2	93.7	-0.1	4.5	-1.2
Housing, Water, Electricity, Gas & Other Fuels	23.8	122.2	0.0	1.7	122.4	0.1	26.5	2.2
Furnishings, Household Equipment & Routine Household Maintenance	4.1	116.9	0.0	1.2	116.9	0.0	5.5	1.2
Health	1.9	123.5	0.2	1.4	123.5	0.2	2.6	1.4
Transport	14.6	115.0	0.1	3.9	115.0	0.1	6.5	1.4
Communication	4.8	97.5	0.0	1.5	97.5	0.0	6.5	1.5
Recreation Services & Culture	4.8	112.4	0.2	0.9	112.4	0.2	6.6	0.9
Education	1.3	120.8	0.4	1.7	120.6	-0.2	1.8	1.7
Restaurants and Hotels	2.9	132.6	0.1	1.1	132.6	0.1	3.9	1.1
Miscellaneous Goods & Services	6.7	114.7	0.4	2.5	114.7	0.4	9.1	2.5
<b>Non-Food</b>	<b>70.5</b>	<b>117.5</b>	<b>0.0</b>	<b>1.9</b>	<b>-</b>	<b>-</b>	<b>-</b>	<b>-</b>

#### **Annex 1: Average Price for Selected Items in Malaysia, January 2020 (RM)**

**Released By:**

**DATO' SRI DR. MOHD UZIR MAHIDIN**  
**CHIEF STATISTICIAN MALAYSIA**  
**DEPARTMENT OF STATISTICS, MALAYSIA**

 [DrUzir\\_Mahidin](#)   [Dr\\_Uzir](#)

**#myHariBulan# #myBulan# #myTahun#**

**Contact person:**

Mohd Yusrizal bin Ab. Razak

Public Relation Officer  
Strategic Communication and International Division  
Department of Statistics, Malaysia  
Tel : +603-8885 7942  
Fax : +603-8888 9248  
Email : yusrizal.razak[at]dosm.gov.my

**Contact person:**

Baharudin Mohamad  
Public Relation Officer  
Strategic Communication and International Division  
Department of Statistics Malaysia  
Tel : +603-8090 4681  
Fax : +603-8888 9248  
Email : baharudin[at]dosm.gov.my

**Copyright ©2025 Department of Statistics Malaysia Official Portal. All Rights Reserved.**