



MINISTRY OF ECONOMY
DEPARTMENT OF STATISTICS MALAYSIA

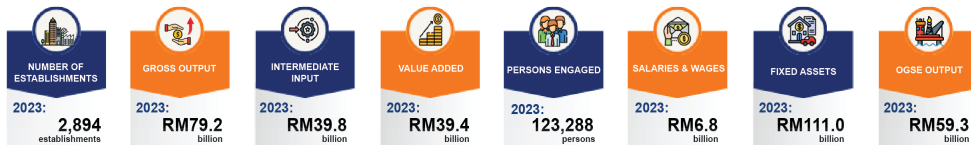
CENSUS OF OIL & GAS SERVICES AND EQUIPMENT (OGSE)



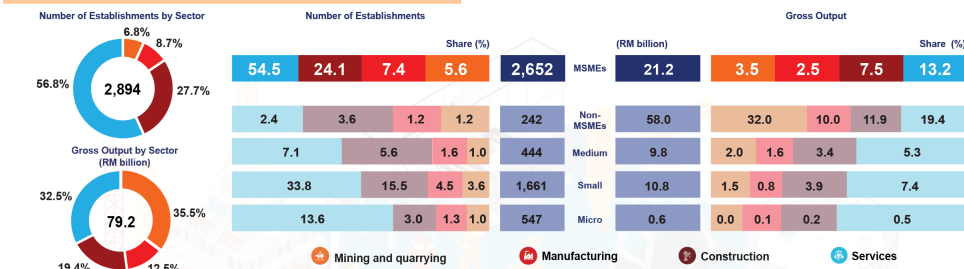
MINISTRY OF ECONOMY
DEPARTMENT OF STATISTICS MALAYSIA

OIL & GAS SERVICES AND EQUIPMENT (OGSE) CENSUS 2024

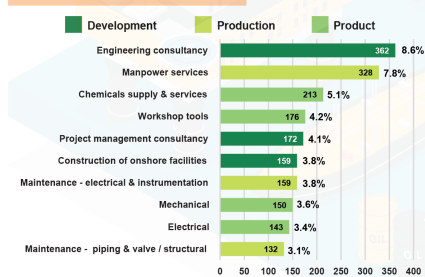
KEY STATISTICS



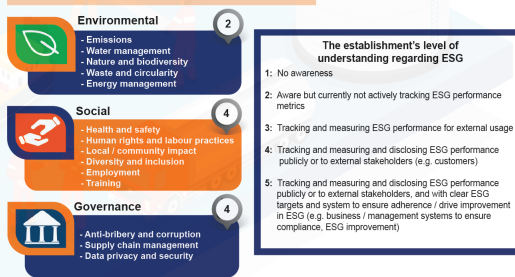
NUMBER OF ESTABLISHMENTS AND GROSS OUTPUT BY SECTOR AND MSMEs



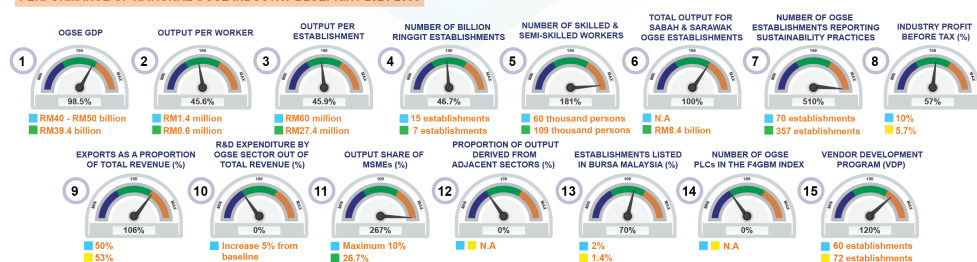
10 HIGHEST CORE ACTIVITIES OF OGSE



ENVIRONMENTAL, SOCIAL AND GOVERNANCE (ESG)



PERFORMANCE OF NATIONAL OGSE INDUSTRY BLUEPRINT 2021-2030



Note: N/A: Not available

Source : Oil & Gas Services And Equipment (OGSE) Census 2024
Department of Statistics Malaysia (DOSM)



@StatsMalaysia



2,894 establishments engaged in the Oil & Gas Services and Equipment with a gross output of RM79.2 billion

The Oil and Gas Services & Equipment (OGSE) report is the inaugural publication from the Department of Statistics Malaysia (DOSM). This report presents key statistics obtained from the OGSE Census 2024 for the reference year 2023 related to the number of establishments, gross output, intermediate input, value added, number of persons engaged, salaries & wages and fixed assets at the national level. Statistics related to core activities of OGSE, Environmental, Social, and Governance (ESG), and Micro, Small and Medium Enterprises (MSMEs), which are key indicators outlined in National OGSE Industry Blueprint (2021-2030), are also reported in this publication.

A total of 2,894 **establishments** engaged in OGSE activities across various sectors. In term of numbers, the **Services** sector led with 1,643 establishments (56.8%), followed by the Construction sector (802 establishments; 27.7%), the Manufacturing sector (251 establishments; 8.7%), and the Mining and quarrying sector (198 establishments; 6.8%).

The value of **gross output** amounted to RM79.2 billion and 35.5 per cent was contributed by the Mining and quarrying sector with a value of RM28.1 billion, followed by the Services sector by RM25.8 billion (32.5%). In the meantime, the Construction and Manufacturing sectors contributed RM15.4 billion (19.4%) and RM9.9 billion (12.5%), respectively. A total of RM59.3 billion of OGSE Output was generated and contributing 74.9 per cent to the overall Gross output in 2023.

The **intermediate input** posted a value of RM39.8 billion in 2023, with the Services sector recorded the highest value at RM14.2 billion (35.6%). This was followed by the Construction sector (RM10.6 billion; 26.6%), the Mining and quarrying sector (RM8.4 billion; 21.1%) and the Manufacturing sector (RM6.7 billion; 16.7%).

The **value added** for establishments engaged in OGSE activities amounted to RM39.4 billion in 2023. The Mining and quarrying sector contributed RM19.7 billion or 50.0 per cent of the total. This was followed by the Services sector at RM11.6 billion (29.4%), the Construction and Manufacturing sectors, recorded RM4.8 billion (12.3%) and RM3.3 billion (8.3%), respectively.

A total of 123,288 persons were engaged in OGSE activities, with the Construction sector contributing 50,696 persons (41.1%), followed by the Services sector (48,731 persons; 39.5%). The Manufacturing and Mining and quarrying sectors recorded of 12,365 persons (10.0%) and 11,496 persons (9.3%) respectively. In relation to skill categories, Semi-skilled workers recorded the highest number of persons engaged at 67,552 persons (56.1%). This was followed by Skilled workers (41,048 persons; 34.1%) and Low-skilled workers (11,917 persons; 9.9%).

Total **salaries and wages paid** amounted to RM6.8 billion in 2023 with an average monthly salary and wages of RM4,609. The Services sector posted the highest salaries and wages value at RM2.8 billion (41.6%). This was followed by the Construction sector (RM2.1 billion;

30.8%), the Mining and quarrying sector (RM1.2 billion; 17.2%), and the Manufacturing sector (RM0.7 billion; 10.4%). In addition, Skilled workers received the highest average monthly salaries and wages at RM8,107, followed by Semi-skilled workers and Low-skilled workers earned at RM2,993 and RM2,230 respectively.

A total of 2,652 establishments (91.6%) of **Micro, Small, and Medium Enterprises (MSMEs)** in 2023, generated RM21.2 billion of gross output or equivalent to 26.7 per cent of the total gross output. Additionally, based on the 56 identified **core activities of OGSE** during the census, Engineering consultancy recorded the highest participation, contributing 8.6 per cent. This was followed by Manpower services (7.8%) and Chemical supply & services (5.1%).

In terms of understanding and awareness related to **Environmental, Social and Governance (ESG)**, the components of Nature & biodiversity under Environmental element, Employment (Social element) and Data privacy & security (Governance element) were the ESG elements with the highest levels comprehension and awareness.

Contact person:

Baharudin Mohamad

Public Relation Officer

Strategic Communication and International Division

Department of Statistics Malaysia

Tel : +603-8090 4681

Fax : +603-8888 9248

Email : baharudin[at]dosm.gov.my

Copyright ©2025 Department of Statistics Malaysia Official Portal. All Rights Reserved.