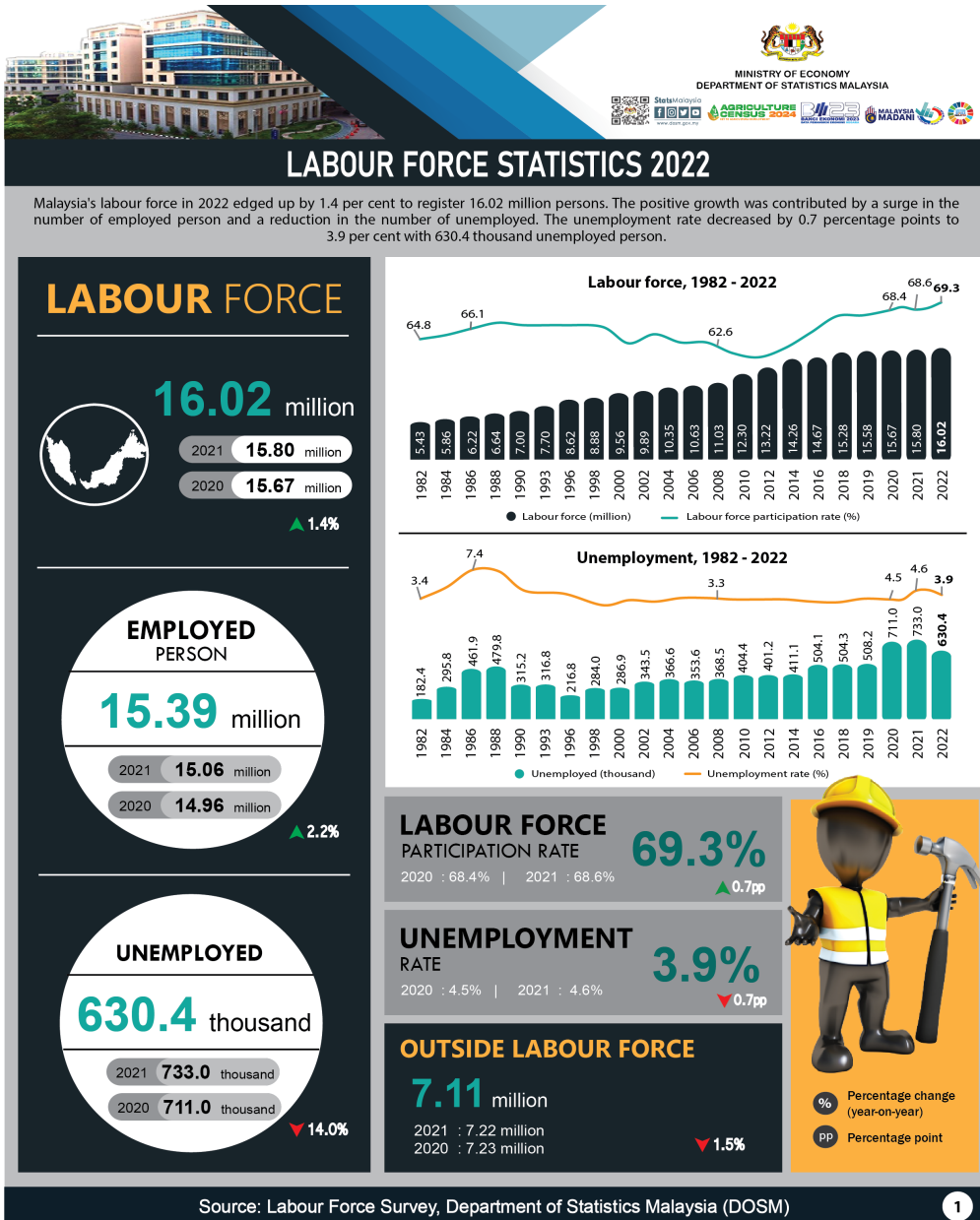




MINISTRY OF ECONOMY  
DEPARTMENT OF STATISTICS MALAYSIA

## LABOUR FORCE SURVEY



### Labour force, 1982 - 2022

Year	Labour force (million)	Labour force participation rate (%)
1982	5.43	64.8
1984	5.86	66.1
1986	6.22	
1988	6.64	
1990	7.00	
1993	7.70	
1996	8.62	
1998	8.88	
2000	9.56	
2002	9.89	
2004	10.35	
2006	10.63	
2008	11.03	
2010	12.30	
2012	13.22	
2014	14.26	
2016	14.67	
2018	15.28	
2019	15.58	
2020	15.67	
2021	15.80	68.4
2022	16.02	69.3

### Unemployment, 1982 - 2022

Year	Unemployed (thousand)	Unemployment rate (%)
1982	182.4	3.4
1984	295.8	7.4
1986	461.9	
1988	479.8	
1990	315.2	
1993	316.8	
1996	216.8	
1998	284.0	
2000	286.9	
2002	343.5	
2004	366.6	
2006	353.6	
2008	368.5	
2010	404.4	
2012	401.2	
2014	411.1	
2016	504.1	
2018	504.3	
2019	508.2	
2020	711.0	4.5
2021	733.0	4.6
2022	630.4	3.9

## **Labour Force**

Labour force in Malaysia in 2022 strengthened further by 1.4 per cent (+224.9 thousand persons) reaching a total of 16.02 million persons as compared to 15.80 million persons in 2021. Meanwhile, the labour force participation rate (LFPR) remained on an increasing trend, escalated by 0.7 percentage points to 69.3 per cent (2021: 68.6%).

## **Employed Person**

In 2022, there were 15.39 million of employed persons, increased by 2.2 per cent or 327.6 thousand persons, as compared to the preceding year (2021: 15.06 million persons). Subsequently, the employment-to-population ratio, which indicates the ability of an economy to create employment, increased 1.1 percentage points year-on-year to reach 66.5 per cent (2021: 65.4%).

## **Unemployment**

Comparison to the previous year, the unemployment rate in 2022 registered a reduction of 0.7 percentage points to 3.9 per cent due to the improvement of the economy which is gradually recovering from the COVID-19 pandemic. In the line with that, the number of unemployed decreased by 102.7 thousand persons to record 630.4 thousand unemployed persons (2021: 733.0 thousand persons).

## **Outside Labour Force**

In 2022, the total population outside the labour force reached 7.11 million persons, decreased by 1.5 per cent or equivalent to 111.3 thousand persons (2021: 7.22 million persons). By sex, female represent 69.6 per cent of the population of outside labour force and male account for 30.4 per cent. The number of females outside the labour force decreased 0.2 per cent to 4.95 million persons (2021: 4.95 million persons), while males decreased by 4.6 per cent to 2.16 million persons (2021: 2.27 million persons).

## **Selected Indicators by State**

In terms of performance by states, the higher labour force participation rate indicates that more labour participation in the economy. In 2022, all states registered increases in LFPR with the highest LFPR recorded in Selangor recorded the highest rate at 76.9 per cent, followed by W.P. Putrajaya (75.7%), W.P. Kuala Lumpur (72.4%), Johor and Sabah (70.9%).

Meanwhile, as for the unemployment rate by states, all states also recorded a decrease in unemployment rate. During the year, W.P. Putrajaya posted the lowest unemployment rate with 1.0 per cent, followed by Melaka (1.6%) and Pahang (2.5%).

## **Released by:**

**DEPARTMENT OF STATISTICS MALAYSIA**

**31 JULY 2023**

## **Contact person:**

Baharudin Mohamad  
Public Relation Officer  
Strategic Communication and International Division  
Department of Statistics Malaysia  
Tel : +603-8090 4681  
Fax : +603-8888 9248  
Email : baharudin[at]dosm.gov.my

**Copyright ©2025 Department of Statistics Malaysia Official Portal. All Rights Reserved.**