



MINISTRY OF ECONOMY  
DEPARTMENT OF STATISTICS MALAYSIA

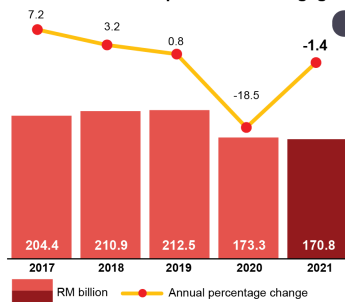
## ANNUAL ECONOMIC STATISTICS OF THE CONSTRUCTION SECTOR



### ANNUAL ECONOMIC STATISTIC 2022

#### CONSTRUCTION

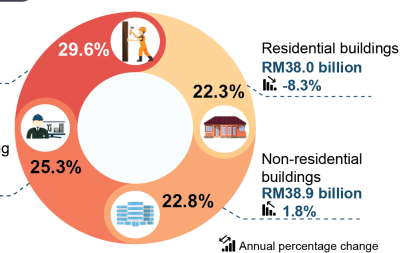
The gross output for Construction sector decreased by 1.4 per cent in 2021 to register RM170.8 billion  
A total of 1.19 million persons were engaged in this sector with salaries and wages paid amounting to RM33.4 billion



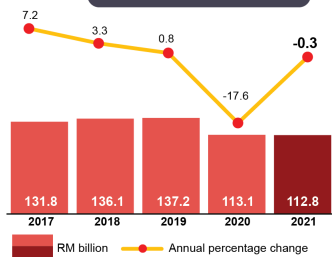
#### GROSS OUTPUT

Special trade activities  
RM50.6 billion  
26.6%

Civil engineering  
RM43.2 billion  
-19.4%

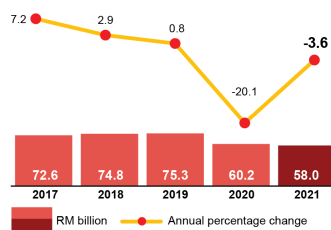


#### INTERMEDIATE INPUT



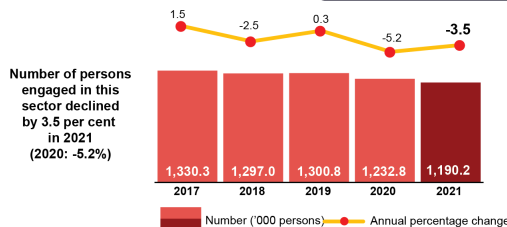
Intermediate input decreased by 0.3 per cent in 2021 to RM112.8 billion

#### VALUE ADDED

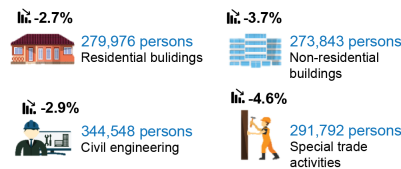


Value added of the Construction sector declined by 3.6 per cent recorded to RM58.0 billion in 2021

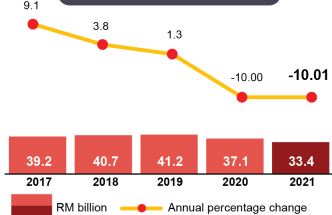
#### PERSONS ENGAGED



Number of persons engaged in this sector declined by 3.5 per cent in 2021 (2020: -5.2%)

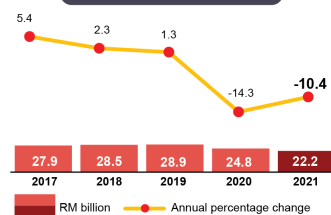


#### SALARIES & WAGES PAID



Salaries & wages paid in Construction sector decreased by 10.01 per cent in 2021 in line with a reduction in the number of employees

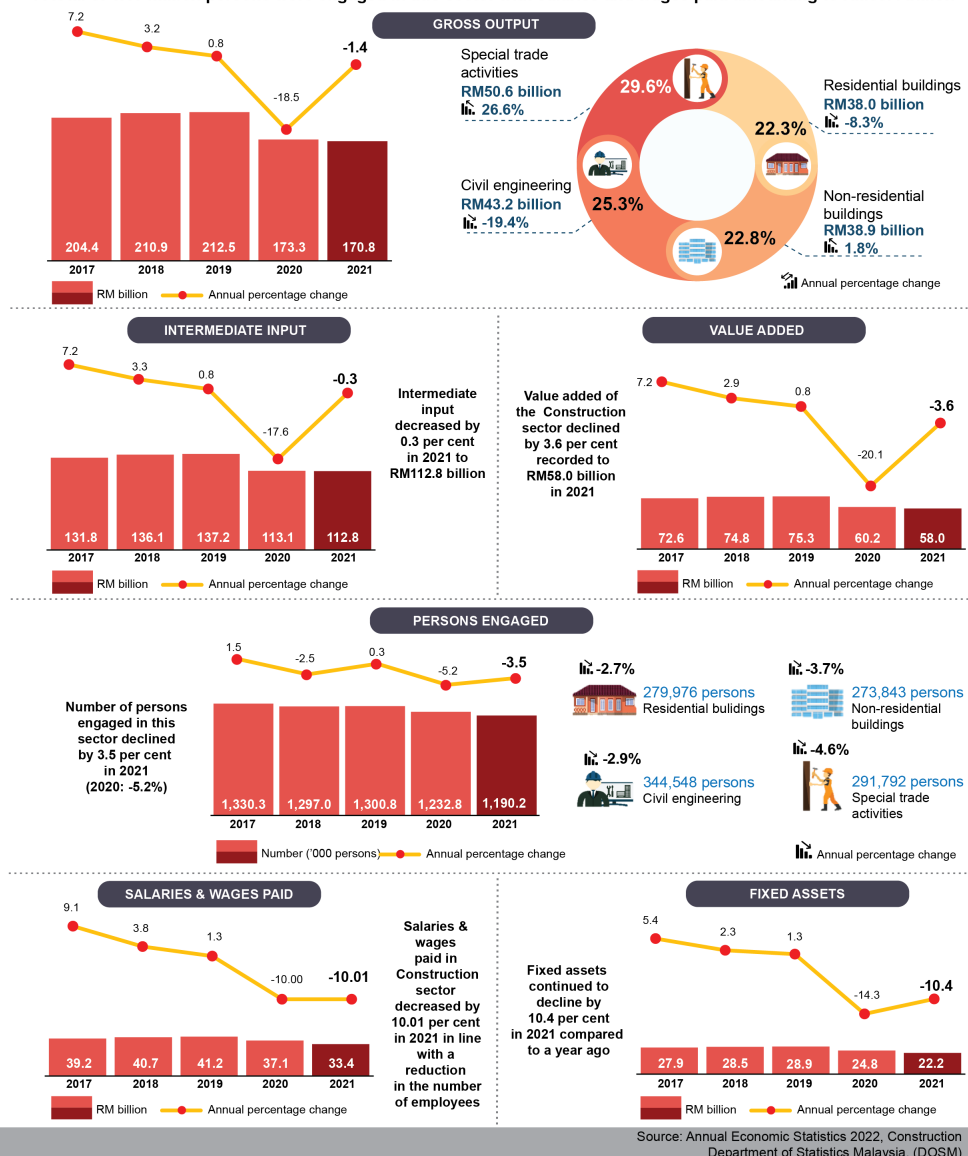
#### FIXED ASSETS



Fixed assets continued to decline by 10.4 per cent in 2021 compared to a year ago

Source: Annual Economic Statistics 2022, Construction  
Department of Statistics Malaysia, (DOSM)

The gross output for Construction sector decreased by 1.4 per cent in 2021 to register RM170.8 billion  
A total of 1.19 million persons were engaged in this sector with salaries and wages paid amounting to RM33.4 billion



## Introduction

This report presents statistics on the Construction sector acquired from the Annual Economic Survey 2022 for the reference year 2021. The key statistics consists of gross output, intermediate input, value added, number of persons engaged, salaries & wages paid and value of fixed assets.

## Performance of Construction Sector

Gross output decreased by 1.4 per cent as compared to a year ago to record RM170.8 billion in 2021. In line with the decrease in gross output, intermediate input declined by 0.3 per cent with a value of RM112.8 billion. Hence, the value added posted a decline by 3.6 per cent from RM60.2 billion in 2020 to RM58.0 billion in 2021. In view of the number of persons engaged in Construction sector, dropped by 3.5 per cent with 1,190,159 persons as compared to 1,232,769 persons in the preceding year. Concurrently, salaries &

wages decreased by 10.0 per cent to RM33.4 billion in 2021 (2020: RM37.1 billion).

**Contact person:**

Baharudin Mohamad

Public Relation Officer

Strategic Communication and International Division

Department of Statistics Malaysia

Tel : +603-8090 4681

Fax : +603-8888 9248

Email : baharudin[at]dosm.gov.my

**Copyright ©2025 Department of Statistics Malaysia Official Portal. All Rights Reserved.**