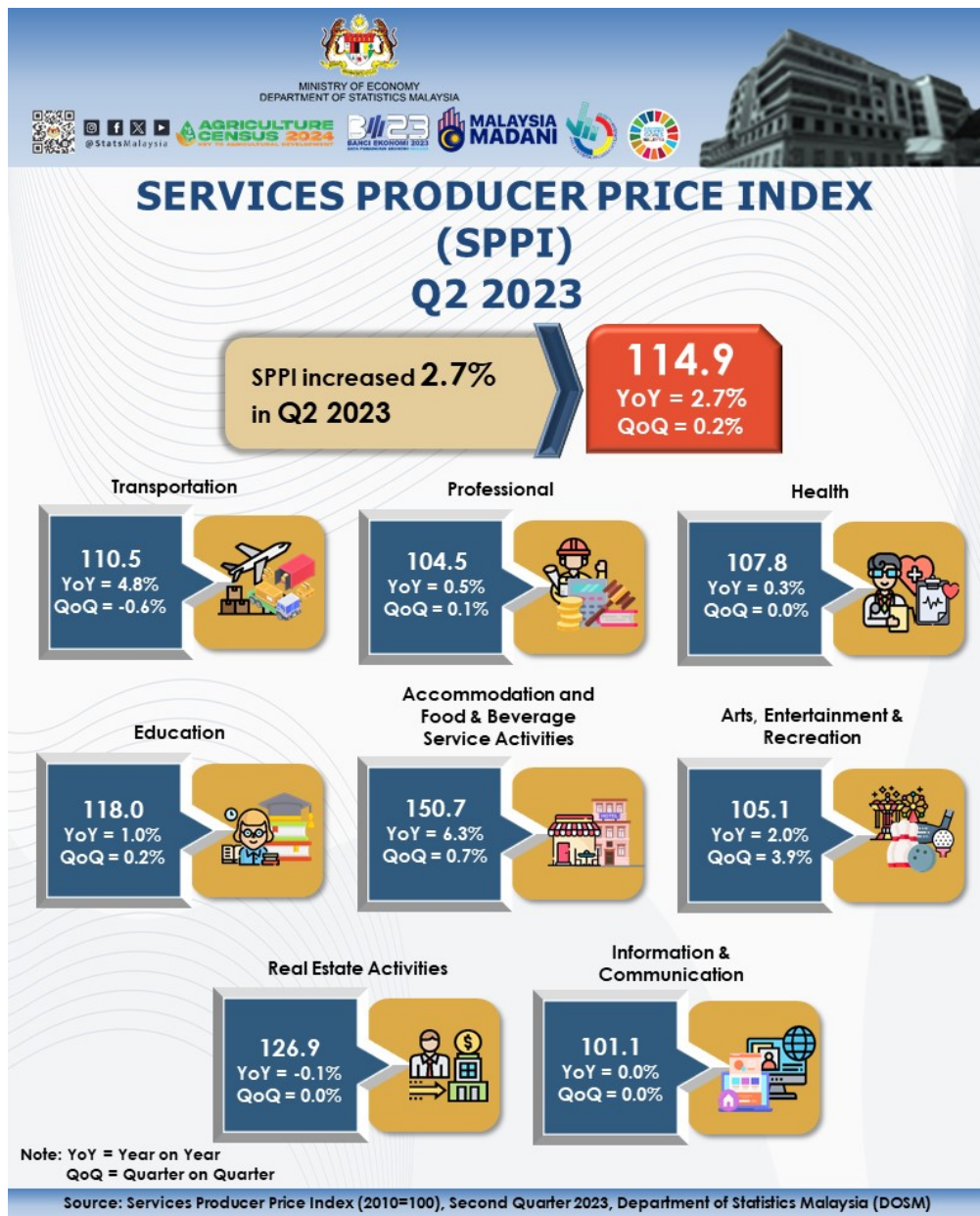




MINISTRY OF ECONOMY
DEPARTMENT OF STATISTICS MALAYSIA

SERVICES PRODUCER PRICE INDEX



SERVICES PRODUCER PRICE INDEX (2010=100)

SECOND QUARTER 2023

- The SPPI averaged 114.9 points in the second quarter of 2023, an increase of 2.7 per cent as compared to 111.9 in the same quarter of the preceding year.
- Most subsectors recorded an increase of prices in this quarter. The Accommodation and Food & Beverage Service Activities rose by 6.3 per cent (Q1 2023: 8.3%) attributed to the increase in Restaurants & Mobile Food Service Activities (7.2%), while the Transportation subsector increased 4.8 per cent (Q1 2023: 6.5%), contributed by Passenger Air Transport (19.5%).
- In the meantime, the other subsectors that recorded an increase were Arts, Entertainment & Recreation which increased by 2.0 per cent, Education (1.0%), Professional (0.5%) and Health (0.3%). Meanwhile, the index of Real Estate Activities recorded a slight decrease of negative 0.1 per cent and the index of Information & Communication remained unchanged.
- On a quarter-on-quarter basis comparison shows that SPPI marginally increased by 0.2 per cent as compared to 0.3 per cent recorded in the previous quarter.
- This was due to the increase in Arts, Entertainment & Recreation (3.9%), Accommodation and Food & Beverage Service Activities (0.7%), Education (0.2%) and Professional (0.1%) subsectors. Meanwhile, the index of Transportation recorded a decrease of negative 0.6 per cent and index of Health, Real Estate Activities and Information & Communication remained unchanged.

Table 1: Services Producer Price Index (2010=100), Second Quarter 2023

| Subsector | Index | | | Percentage Change (%) | |
|---|--------------|--------------|--------------|-----------------------|---------------------|
| | Q2 2022 | Q1 2022 | Q2 2023 | Q2 2023/ Q1 2022 | Q2 2023/ Q2 2022 |
| TOTAL | 111.9 | 114.7 | 114.9 | 0.2 | 2.7 |
| Transportation | 105.4 | 111.2 | 110.5 | -0.6 | 4.8 |
| Accommodation and Food & Beverage Service Activities | 141.8 | 149.6 | 150.7 | 0.7 | 6.3 |
| Information & Communication | 101.1 | 101.1 | 101.1 | 0.0 | 0.0 |
| Real Estate Activities | 127.0 | 126.9 | 126.9 | 0.0 | -0.1 |
| Professional | 104.0 | 104.4 | 104.5 | 0.1 | 0.5 |
| Education | 116.8 | 117.8 | 118.0 | 0.2 | 1.0 |
| Health | 107.5 | 107.8 | 107.8 | 0.0 | 0.3 |
| Arts, Entertainment & Recreation | 103.0 | 101.2 | 105.1 | 3.9 | 2.0 |

Contact person:

Baharudin Mohamad

Public Relation Officer

Strategic Communication and International Division

Department of Statistics Malaysia

Tel : +603-8090 4681

Fax : +603-8888 9248

Email : baharudin[at]dosm.gov.my

Copyright ©2025 Department of Statistics Malaysia Official Portal. All Rights Reserved.