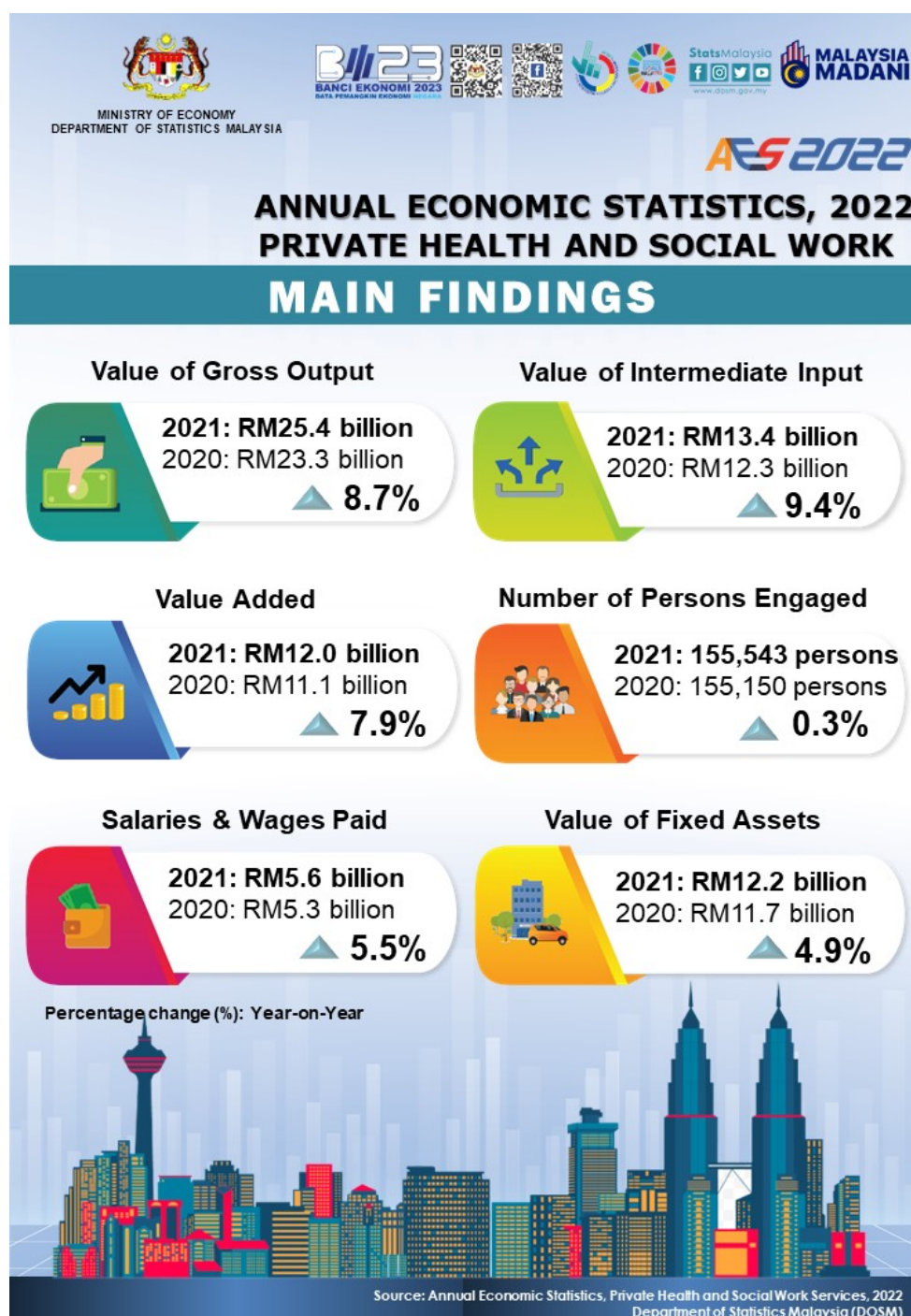


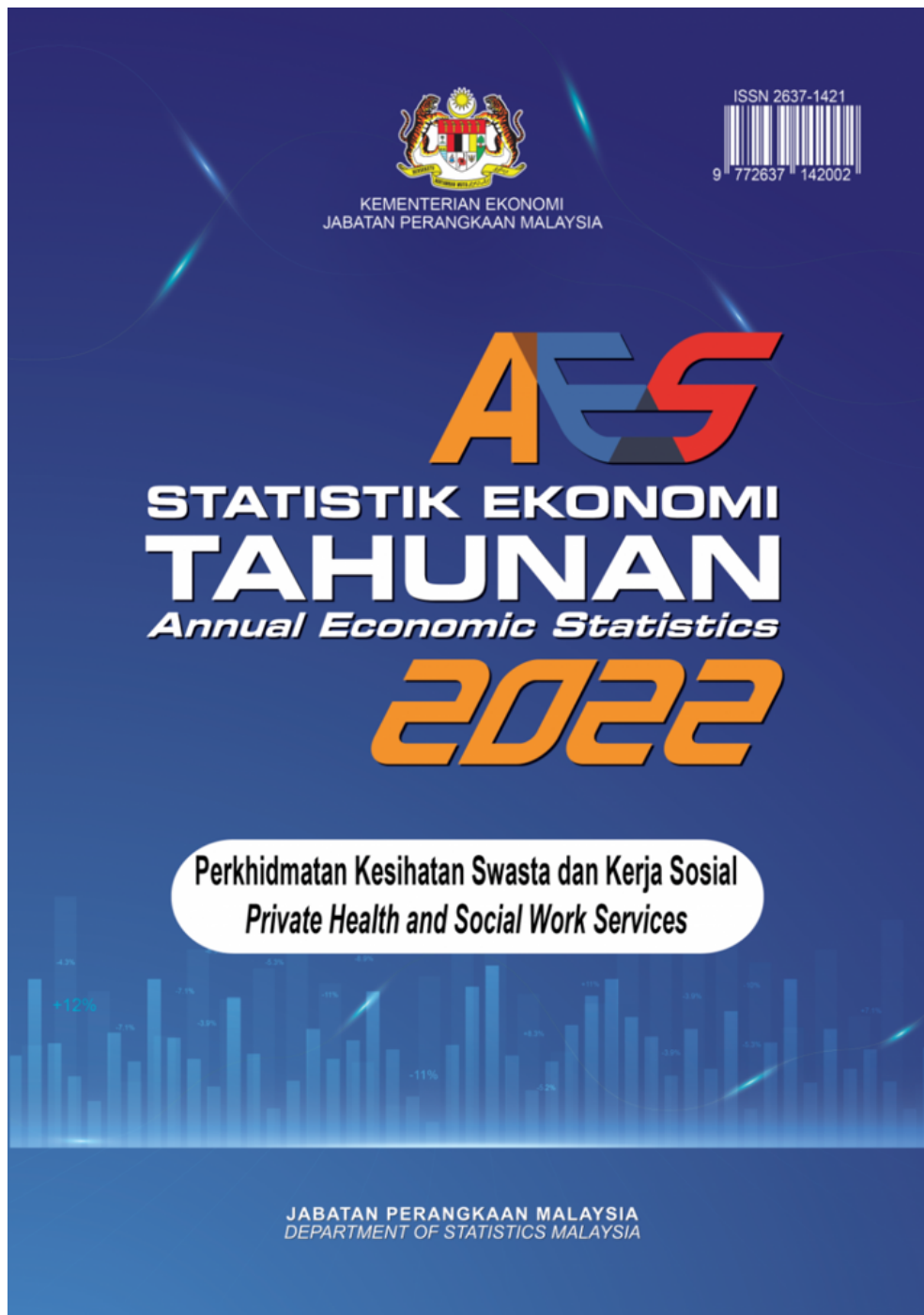


MINISTRY OF ECONOMY  
DEPARTMENT OF STATISTICS MALAYSIA

## ANNUAL ECONOMIC STATISTICS - HEALTH AND SOCIAL WORKS SERVICES



*This publication presents statistics on the private health and social work services which obtained from the Annual Economic Survey 2022 for reference year 2021. Private health and social work services comprises hospital activities; medical and dental practice activities; other human health activities; social work activities without accommodation; and residential care activities. The main statistics such as the value of gross output, value of intermediate input, value added, number of persons engaged, salaries & wages paid as well as value of fixed assets owned is also depicted in this publication.*



**Contact person:**

Baharudin Mohamad

Public Relation Officer

Strategic Communication and International Division

Department of Statistics Malaysia

Tel : +603-8090 4681

Fax : +603-8888 9248

Email : [baharudin\[at\]dosm.gov.my](mailto:baharudin[at]dosm.gov.my)

**Copyright ©2025 Department of Statistics Malaysia Official Portal. All Rights Reserved.**