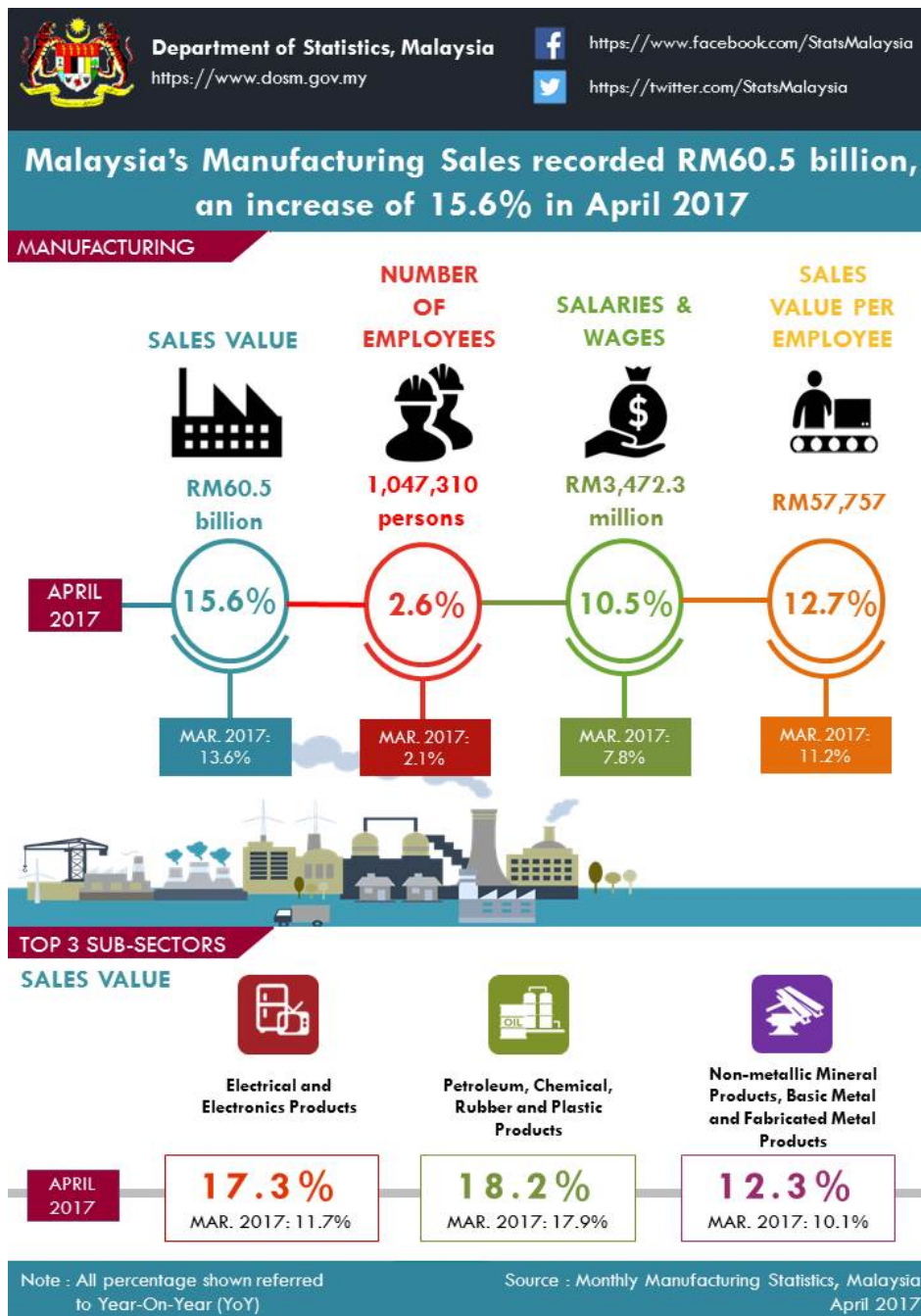




MINISTRY OF ECONOMY  
DEPARTMENT OF STATISTICS MALAYSIA

MONTHLY MANUFACTURING STATISTICS MALAYSIA, APRIL 2017



**HIGHLIGHTS**

**Manufacturing Sales registered RM60.5 billion in April 2017**

Malaysia's April manufacturing sales continues to record a strong growth of **15.6%**, rising to **RM60.5 billion** as compared to RM52.3 billion reported a year ago.

Year-on-year, the significant increase in sales value in April 2017 was due to the increase in Electrical and Electronics Products (**17.3%**) Petroleum, Chemical, Rubber and Plastic Products (**18.2%**) and Non-metallic Mineral Products, Basic Metal and Fabricated Metal (**12.3%**). These three sub-sectors contributed 80.1% to the sales value of the manufacturing sector.

Total employees engaged in the Manufacturing sector in April 2017 was **1,047,310 persons**, an increase of **2.6%** or 26,346 persons as compared to 1,020,964 persons in April 2016.

Salaries & wages paid in April 2017 increased by **10.5%** (**RM330.2 million**) to record **RM3,472.3 million**.

Sales value per employee increased by **12.7%** to record **RM57,757** as compared with the same month of the previous year.

**\*Notes:**

Data for April 2017 is **provisional**. The data will be updated based on the latest available figures and subsequently published in the May 2017 publication.

**Released By:**

**DR MOHD UZIR MAHIDIN**  
**CHIEF STATISTICIAN MALAYSIA**  
**DEPARTMENT OF STATISTICS MALAYSIA**

**9 JUNE 2017**

**Contact person:**

Ho Mei Kei  
Public Relation Officer  
Corporate and User Services Division  
Department of Statistics, Malaysia  
**Tel** : +603-8885 7942  
**Fax** : +603-8888 9248  
**Email** : mkho[at]stats.gov.my

**Contact person:**

Baharudin Mohamad  
Public Relation Officer  
Strategic Communication and International Division  
Department of Statistics Malaysia  
**Tel** : +603-8090 4681  
**Fax** : +603-8888 9248  
**Email** : baharudin[at]dosm.gov.my

**Copyright ©2025 Department of Statistics Malaysia Official Portal. All Rights Reserved.**