

**Embargo:** Only to be published or disseminated at 1200 hours, Tuesday, June 25, 2024



MINISTRY OF ECONOMY  
DEPARTMENT OF STATISTICS MALAYSIA

**MEDIA STATEMENT  
FOR MALAYSIAN ECONOMIC INDICATORS  
LEADING, COINCIDENT & LAGGING INDEXES  
APRIL 2024**

---

***Leading Index registered 4.3 per cent in April 2024, signalling that Malaysia's economy is poised for continued growth in the near term***

***PUTRAJAYA, June 25, 2024*** - Today, the Department of Statistics Malaysia released the **Malaysian Economic Indicators: Leading, Coincident & Lagging Indexes for April 2024**. The Leading Index (LI) provides an early indication of significant turning points in the business cycle and the direction of the economy in the near term.

Chief Statistician Malaysia, Dato' Sri Dr. Mohd Uzir Mahidin said, "The Leading Index for Malaysia continued to increase 4.3 per cent in April 2024, achieving 113.1 points as against 108.4 points in the previous year (**Exhibit I**). The fifth consecutive month of increases suggesting that the economy remained in a growing momentum. Improvements were observed in all components except for Real Imports of Semi Conductors (-1.5%). After a marginal decline of 0.5 per cent in March 2024, the monthly change of LI bounced back by 0.8 per cent in April 2024. This turnaround was contributed by the rising Number of Housing Units Approved (0.8%), Real Imports of Semi Conductors (0.2%) and the Number of New Companies Registered (0.2%)".

Looking at the smoothed long-term trend in April 2024, the LI remained above the 100.0 points (**Exhibit II**), reflecting continued economic growth in the coming months supported by a robust domestic demand and a sustainable expansion of the Manufacturing and Services sectors.

The Coincident Index (CI) which measures the overall current economic performance, rose by 3.0 per cent in April 2024, reaching 125.4 points as compared to 121.7 points in

*the same month of the previous year. The continued double-digit increase in the Real Contributions, EPF (34.1%) was the main contributor to this rise. Referring to the monthly performance, the CI also increased by 0.3 per cent primarily backed by the increase in the Total Employment in Manufacturing (0.2%).*

*The Department of Statistics Malaysia (DOSM) has launched OpenDOSM NextGen as a medium that provides a catalog of data and visualisations to facilitate users' analysis of various data and can be accessed through <https://open.dosm.gov.my>.*

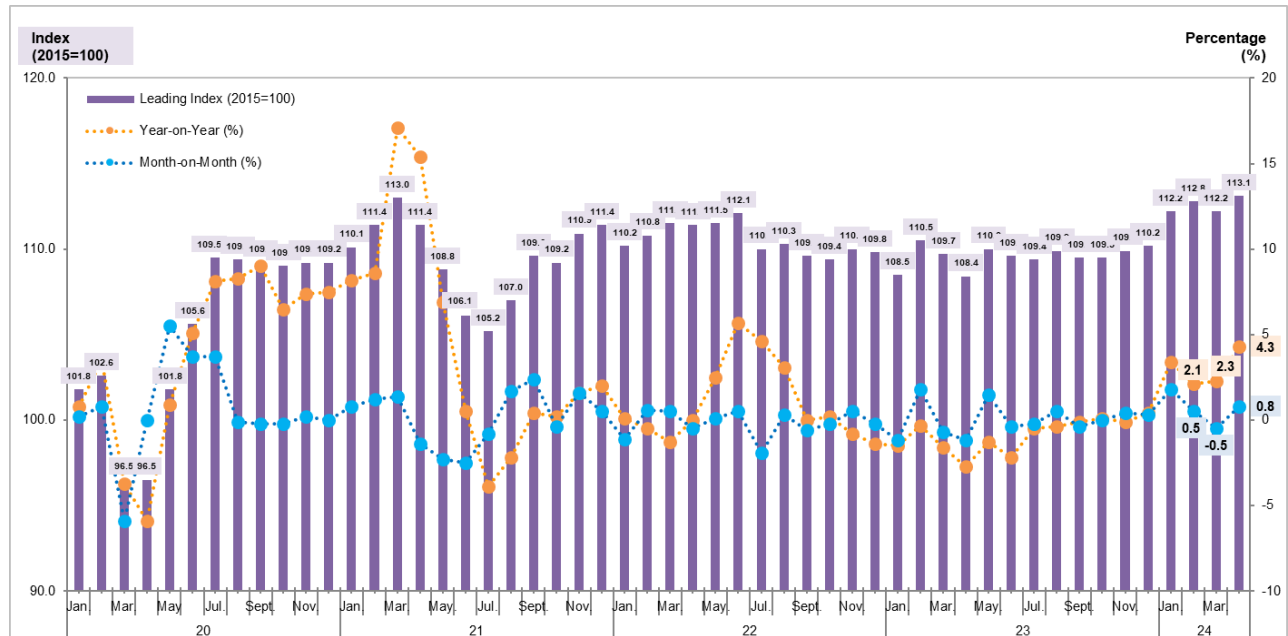
*DOSM will conduct the Agricultural Census in 2024. Please visit <https://www.myagricensus.gov.my/> for more information. The theme is “Agriculture Census, Key to Agricultural Development”.*

*The Government of Malaysia has declared National Statistics Day (MyStats Day) on October 20th each year. MyStats Day theme is “Statistics is the Essence of Life”. DOSM commemorates its 75<sup>th</sup> Diamond Jubilee in 2024.*

*Released by:*

**THE OFFICE OF CHIEF STATISTICIAN MALAYSIA  
DEPARTMENT OF STATISTICS MALAYSIA  
JUNE 25, 2024**

**Exhibit I: Leading Composite Index**



**Exhibit II: Leading Composite Index (Long Term Trend = 100) and Business Cycle**

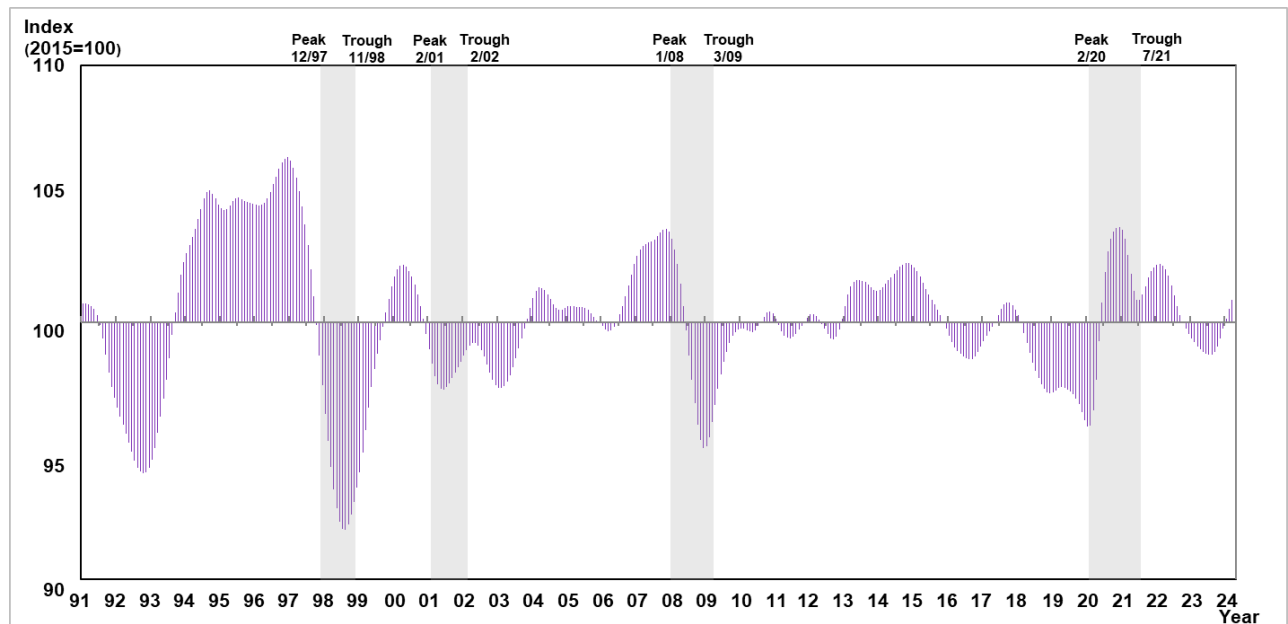


Exhibit III: Annual Changes of Leading Index Components

