

**Embargo: Only to be published or disseminated at 1200 hour, Monday, July 31<sup>th</sup> 2023**



MINISTRY OF ECONOMY  
DEPARTMENT OF STATISTICS MALAYSIA

## **MEDIA STATEMENT FOR SABAH EXTERNAL TRADE STATISTICS 2022**

---

### ***Sabah's Total Trade Recorded Highest Growth, 35.4 per cent In 2022, Surpassed RM100 Billion***

**PUTRAJAYA, JULY 31, 2023 – Sabah External Trade Statistics Report for the reference year 2022** released today displays Sabah's external trade statistics with trading partners according to a detailed commodity classification. This report shown Sabah's total external trade, exports, imports and balance of trade recorded the highest levels in 2022.

Commenting on the report, the Chief Statistician of Malaysia, Dato' Sri Dr. Mohd Uzir Mahidin, said, " Sabah's total trade surpassed RM100 billion in 2022. Sabah's exports maintained a positive double-digit growth, rose 38.6 per cent to RM77.2 billion, as compared to the previous year. Along with the exports growth, imports also recorded an increase of 29.6 per cent from RM31.6 billion to RM40.9 billion in 2022 with a trade surplus amounting to RM36.2 billion, an increase of 50.4 per cent".

The Department of Statistics Malaysia also reported that the main contributor of exports were crude petroleum, valued at RM30.3 billion, palm oil (RM21.1 billion) and liquefied natural gas (RM5.2 billion). Exports of these three major products amounting to RM56.6 billion and accounted for 73.4 per cent of Sabah's total exports. Meanwhile, total imports were driven by machinery and transport equipment of RM12.4 billion, food products (RM6.4 billion) and manufactured products (RM5.3 billion).

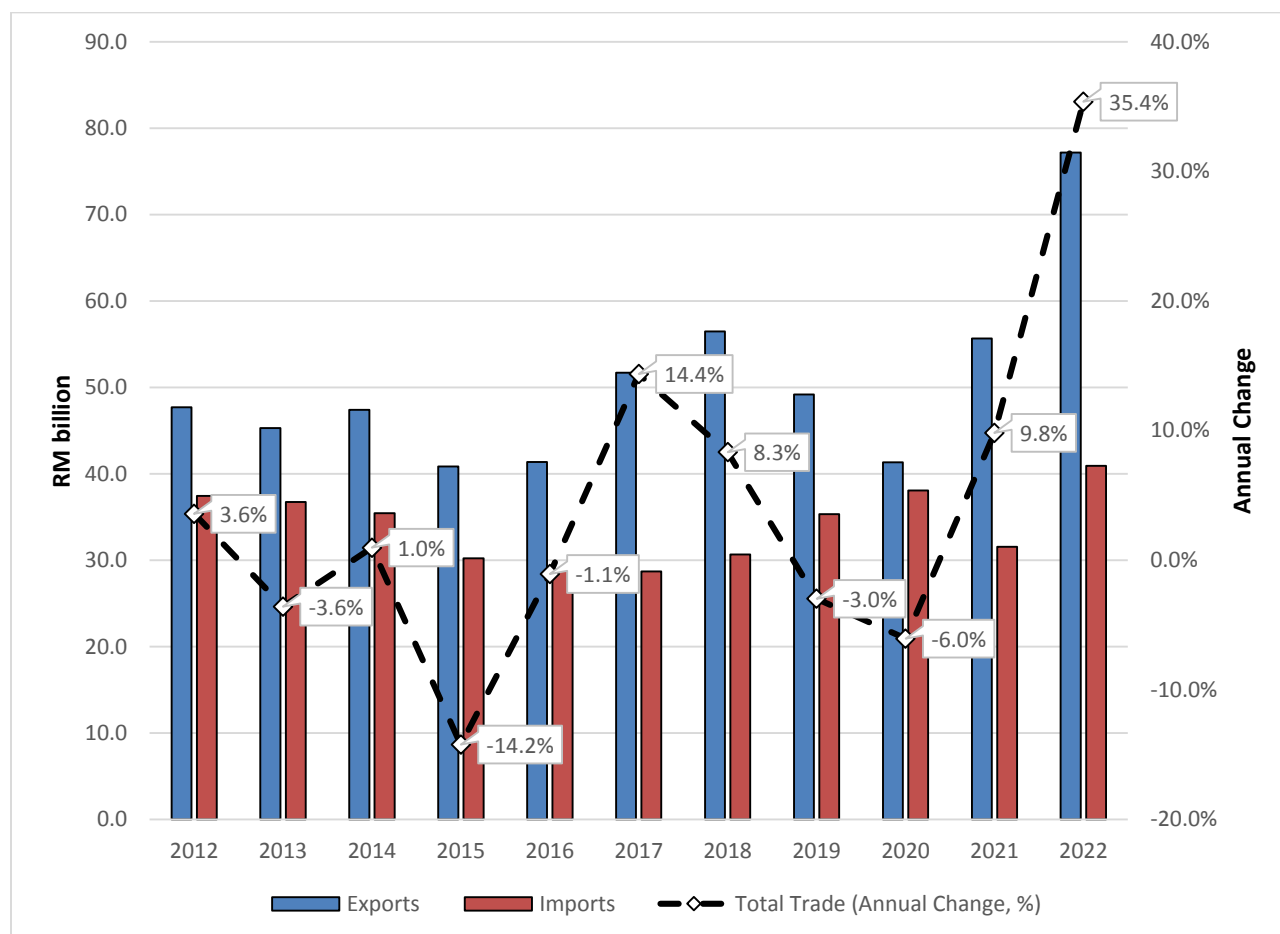
*The report also states that the five major trading partners contributed 67.1 per cent to Sabah's total external trade comprising Peninsular Malaysia (42.4%), China (10.4%), India (5.5%), the European Union (4.7%) and the Republic of Korea (4.2%).*

*DOSM is conducting the Economic Census in 2023. DOSM greatly appreciates the cooperation of respondents in providing information and ensuring the success of this census. Please visit [www.dosm.gov.my](http://www.dosm.gov.my) for more information.*

*DOSM has launched OpenDOSM NextGen as a medium that provides a catalogue of data and visualisation to facilitate users in analysing various data. OpenDOSM NextGen is an open source data sharing platform and accessible through <https://open.dosm.gov.my> portal.*

*Please be informed that the Government of Malaysia has declared National Statistics Day (MyStats Day) on October 20 each year. MyStats Day theme is "Connecting the World with Data We Can Trust".*

Chart : Exports, Imports and Growth of Total External Trade, 2012 – 2022



Released by:

**THE OFFICE OF CHIEF STATISTICIAN MALAYSIA**  
**DEPARTMENT OF STATISTICS MALAYSIA**  
**31 JULY 2023**