



MEDIA STATEMENT

MINISTRY OF ECONOMY
DEPARTMENT OF STATISTICS MALAYSIA

Block C6 & C7, Complex C,
Federal Government Administrative Centre, Precinct 1,
62514 Federal Territory of Putrajaya
Telephone : 03 - 8090 4681

SUPPLY AND UTILIZATION ACCOUNTS SELECTED AGRICULTURAL COMMODITIES, 2020-2024

High Self-Sufficiency Ratio (SSR): Domestic Production Capacity Strengthened, however Import Dependency Remains Significant

PUTRAJAYA, 15th December 2025 - The Department of Statistics Malaysia (DOSM) today released the **Supply and Utilization Account Selected Agricultural Commodities, 2020-2024**, covering 60 commodities across crops, livestock and fisheries subsectors. This publication presents data on production, exports, imports and three key indicators Self-Sufficiency Ratio (SSR), Import Dependency Ratio (IDR) and Per Capita Consumption (PCC) which serve as essential measures to assess the nation's domestic production capacity, level of import dependence and food available to consume. This publication also serves as an indicator to assess the effectiveness of national policies such as the National Agrofood Policy (NAP 2021–2030) in strengthening domestic production capacity and reducing dependence on imports.

Chief Statistician of Malaysia, Dato' Sri Dr. Mohd Uzir Mahidin, emphasised that the SSR functions as a key indicator in measuring the nation's food supply security. A high SSR value signifies that domestic production is able to meet local demand, thereby reducing reliance on imports. "SSR of 100 per cent or higher reflects the country's ability to achieve self-sufficiency

in a given commodity and demonstrates the effectiveness of productivity-enhancement strategies under the agrofood policy,” he said.

The crops subsector showed strong performance in 2024, with nine types of fruit type and eight selected vegetables recording SSR exceeding 100 per cent. Commodities such as papaya (142.4%), french bean (122.8%), tomato (113.0%) and spinach (107.1%) achieved full self-sufficiency. However, chilli (35.8%) and mango (20.6%) remained low, indicating the need for more targeted policy interventions for high-impact yet supply-vulnerable commodities.

In the livestock subsector, duck meat (129.9%) and chicken/ duck eggs (107.0%) have consistently exceeded full self-sufficiency since 2020. In the mean time, SSR for chicken meet almost reached 100 per cent with 92.9 per cent. Meanwhile, in the fisheries subsector, four of the 15 main species that is seabass (123.0%), tuna (108.3%), crab (100.5%) and river catfish (100.0%) recorded positive performance.

According to Dato’ Sri Dr. Mohd Uzir, the Import Dependency Ratio (IDR) measures the level of the nation’s exposure to risks associated with global supply chain disruptions. In 2024, Malaysia’s food import value reached RM93.8 billion, an increase of 19.1 per cent as compared to the previous year, reflecting continued reliance on external sources for several essential commodities.

Malaysia remains dependent on imports for commodities such as mutton (IDR: 92.1%) and beef (IDR: 83.5%). Similarly, temperate fruits such as apples and essential cooking ingredients such as garlic and onions continue to be imported due to cost constraints and agroecological factors. Nevertheless, the decline in the IDR of shallots below 100.0 per cent for the first time signals the early success of domestic production enhancement efforts through variety research and local production incentives. “This

demonstrates Malaysia's potential to strengthen its domestic production capacity," he added.

The Per Capita Consumption (PCC) indicator provides insights into the availability of agricultural commodities for consumption by the population. Rice remains the staple food, with a PCC available of 75.7 kilogramme per person per year, followed by coconut (26.8 kg/year), durian (15.6 kg/year) and pineapple (11.3 kg/year). The availability of chicken meat per capita recorded the highest increase, rising by 5.6 kg/year to 54.9 kg/year in 2024 as compared to the previous year. Meanwhile, chicken/ duck eggs recorded an availability of 24.2 kg/year, followed by pork at 15.9 kg/year. For fisheries items, mackerel recorded a PCC of 5.1 kg/year and shrimp 4.5 kg/year, remaining the top choices among consumers.

Malaysia, for the first time, ranked as number one (1) globally in the biennial Open Data Inventory (ODIN) 2024/25 report released by Open Data Watch (ODW), surpassing 197 other countries. This achievement marks a significant leap from its 67th position in the ODIN 2022/23 assessment.

OpenDOSM NextGen is a medium that provides data catalogue and visualisations to facilitate users' analysis and can be accessed through <https://open.dosm.gov.my>.

Released by:

**THE OFFICE OF CHIEF STATISTICIAN MALAYSIA
DEPARTMENT OF STATISTICS MALAYSIA
15th DECEMBER 2025**

Exhibit 1: Self-Sufficiency Ratio of 60 Selected Agricultural Items, Malaysia, 2024

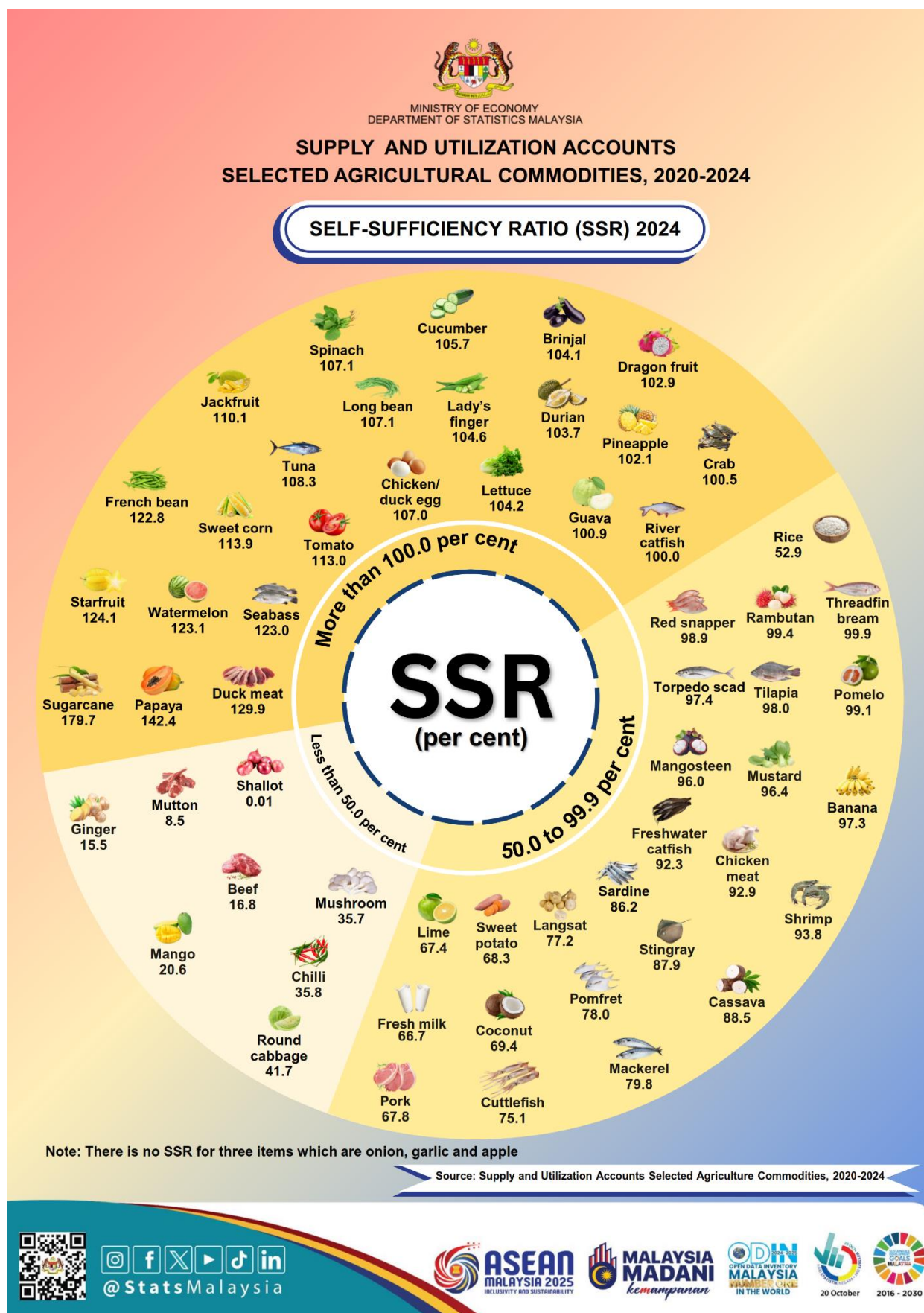


Table 1: Production of Selected Agricultural Items, Malaysia, 2020-2024

Item	Production (tonnes)				
	2020	2021	2022	2023	2024
Rice ('000 tonnes)	1,570.8	1,635.0	1,514.9	1,439.13	1,362.1
CROPS					
Starfruit	9,295.8	7,894.5	6,616.1	6,351.1	7,388.5
Papaya	61,775.7	60,979.6	54,753.1	54,766.7	46,975.5
Dragon Fruit	8,562.6	11,201.0	27,719.2	36,155.9	26,997.8
Jackfruit	60,093.5	66,532.8	60,223.2	60,216.6	64,050.6
Durian	390,635.4	448,271.5	455,457.7	592,052.6	568,806.8
Apple	-	-	-	-	-
Sweet corn	68,207.4	74,735.0	63,154.7	63,508.0	58,649.9
Guava	37,881.2	36,899.6	33,292.4	44,674.3	48,155.9
Coconut	560,984.3	557,353.7	604,428.4	626,557.3	673,553.4
Langsat	17,469.7	15,207.1	10,904.9	9,566.7	8,415.0
Pomelo	16,040.2	15,837.9	13,220.6	17,051.8	23,552.5
Manggo	12,834.4	12,208.3	9,219.3	9,213.5	8,628.2
Mangosteen	23,296.6	26,831.4	23,508.4	22,073.2	30,230.9
Pinapple	323,420.5	375,423.2	537,231.4	440,848.5	516,870.3
Banana	313,811.3	330,253.2	330,601.1	343,203.2	335,444.0
Rambutan	49,957.6	55,627.8	52,096.9	52,551.7	56,333.3
Watermelon	157,054.0	153,324.2	151,464.5	150,243.3	167,611.1
Spinash	74,250.8	80,404.4	79,751.6	82,993.6	85,155.4
Lady's finger	57,860.6	63,062.4	63,074.3	65,697.9	70,202.6
Chilli	30,190.9	31,418.3	33,616.6	41,358.6	45,058.2
French bean	10,451.2	10,449.9	12,237.2	11,739.6	14,880.4
Long bean	52,638.3	60,158.1	60,137.1	57,445.3	62,894.3
Round cabbage	80,641.2	91,389.1	120,163.4	108,748.6	119,803.4
Lettuce	54,583.7	75,546.0	102,015.0	103,542.1	148,196.5
Mustard	143,286.3	153,270.8	144,236.4	154,810.9	157,360.6
Brinjal	39,785.7	42,731.6	46,128.8	45,776.5	56,468.9
Cucumber	101,482.0	96,353.1	102,368.7	112,344.8	106,784.6
Tomato	192,129.5	186,662.6	194,305.2	188,842.2	259,178.9
Mushroom	7,619.6	10,801.7	10,997.2	12,787.9	8,445.3
Ginger	11,751.2	8,718.6	10,623.3	10,784.7	11,256.4
Lime	17,734.7	18,289.1	19,005.3	17,646.3	22,639.6
Sugarcane	23,519.4	25,591.1	25,032.4	20,364.2	17,954.6
Cassava	37,513.7	39,386.9	42,527.9	45,266.1	41,341.2
Sweet potato	54,750.4	53,613.8	44,686.7	32,983.8	50,583.3
Onion	-	-	-	-	-
Shallot	-	-	-	-	11.9
Garlic	-	-	-	-	-
LIVESTOCK					
Chicken meat	1,628,609.3	1,583,219.5	1,543,425.3	1,564,606.2	1,830,579.8
Pork	220,586.4	197,371.6	181,853.2	147,419.3	136,506.3
Duck meat	74,160.9	69,762.2	68,015.8	67,335.1	66,399.8
Mutton	3,916.8	3,502.5	4,095.6	4,368.4	4,269.4
Beef	41,378.8	36,800.6	35,934.1	38,667.2	42,426.3
Fresh milk	41,778.0	38,729.0	38,951.0	40,111.9	42,468.6
Chicken/Duck egg	795,461.4	839,699.8	869,392.1	1,005,861.5	953,643.5
FISHERIES					
Pomfret	16,917.8	20,065.5	17,917.9	18,466.3	24,401.6
Torpedo scad	26,471.4	28,701.0	25,922.5	36,695.0	29,125.3
Freshwater catfish	29,012.8	31,957.8	39,815.3	42,092.9	45,018.6
Threadfin bream	43,694.7	40,361.6	44,983.2	43,286.1	41,609.9
Crab	14,326.6	15,939.6	15,885.0	14,345.8	17,280.6
Mackerel	168,227.5	161,146.5	155,528.5	142,347.6	142,015.8
Red snapper	7,256.5	5,370.7	5,243.9	14,037.2	13,701.8
Stingray	9,822.8	10,124.5	10,980.2	11,317.8	12,992.3
River catfish	18,227.3	21,144.2	20,861.9	18,812.9	20,944.1
Sardine	79,067.7	60,325.4	59,810.0	75,596.0	94,234.3
Seabass	26,355.8	38,063.8	48,070.0	58,390.3	65,317.6
Cuttlefish	62,582.9	57,157.3	59,472.0	58,385.4	58,624.2
Tilapia	33,917.6	38,543.9	35,292.4	33,002.8	30,950.3
Tuna	84,481.0	66,510.1	69,355.7	69,335.5	72,388.1
Shrimp	156,237.3	173,593.1	152,789.5	151,318.9	164,141.7

Table 2: Exports of Selected Agricultural Items, Malaysia, 2020-2024

Item	Export (tonnes)				
	2020	2021	2022	2023	2024
Rice ('000 tonnes)	-	-	-	-	-
CROPS					
Starfruit	1,373.2	1,131.1	1,105.1	1,057.0	1,433.9
Papaya	22,487.2	19,786.8	16,766.9	14,272.1	14,918.6
Dragon Fruit	3,886.8	5,323.9	5,300.5	5,415.7	4,901.0
Jackfruit	5,649.8	7,260.3	7,576.6	6,087.6	6,226.2
Durian	24,098.9	42,765.7	43,864.5	41,633.0	30,809.8
Apple	-	-	-	-	-
Sweet corn	6,882.6	8,187.6	7,730.8	8,224.3	9,187.0
Guava	2,916.2	3,463.1	3,798.2	4,245.3	4,109.7
Coconut	4,659.2	11,025.4	12,580.7	8,497.6	8,217.1
Langsat	540.8	2,363.4	657.5	5,527.8	200.6
Pomelo	3,061.8	3,999.4	3,631.9	3,186.6	2,738.8
Manggo	4,076.0	6,656.0	3,377.4	10,864.4	15,618.8
Mangosteen	2,309.9	2,205.5	2,186.0	1,907.7	2,568.6
Pinapple	15,960.6	16,427.8	14,455.6	12,801.4	11,632.7
Banana	28,059.3	32,084.9	17,107.3	24,466.4	23,712.1
Rambutan	767.7	1,798.9	945.1	1,806.2	1,496.7
Watermelon	45,324.3	43,067.9	40,721.1	44,078.5	48,444.8
Spinash	8,826.8	9,904.7	8,189.2	7,556.1	7,370.1
Lady's finger	1,647.7	3,255.5	2,942.3	3,413.6	3,944.1
Chilli	3,052.5	4,243.5	3,890.2	3,896.6	3,198.4
French bean	3,703.7	4,120.2	3,026.5	3,163.8	3,513.0
Long bean	4,417.1	6,239.1	5,208.6	6,112.8	6,156.5
Round cabbage	2,293.6	3,547.0	2,778.2	3,825.3	3,731.5
Lettuce	14,129.4	12,919.9	13,947.4	14,571.2	15,091.8
Mustard	6,613.1	6,345.2	5,847.1	4,262.8	1,107.7
Brinjal	6,875.2	7,690.5	7,134.9	8,445.3	7,034.4
Cucumber	19,709.7	22,644.7	21,893.7	18,428.7	18,122.3
Tomato	38,391.0	36,457.5	35,425.6	34,754.0	36,855.9
Mushroom	4,251.0	6,758.1	6,131.3	5,628.8	5,921.9
Ginger	305.9	656.8	1,028.4	2,275.3	1,771.1
Lime	1,537.7	2,288.9	1,866.1	1,927.0	2,278.5
Sugarcane	8,760.1	8,543.5	7,835.9	8,093.4	8,071.3
Cassava	517.8	880.9	1,039.8	1,176.6	750.8
Sweet potato	1,391.4	2,273.7	3,126.5	1,925.4	1,290.3
Onion	-	-	-	-	-
Shallot	-	-	-	-	-
Garlic	-	-	-	-	-
LIVESTOCK					
Chicken meat	95,107.3	99,583.4	64,655.7	67,510.4	76,714.7
Pork	1,589.5	1,054.4	470.3	501.7	326.4
Duck meat	14,929.6	16,360.5	16,163.9	15,986.7	15,300.8
Mutton	9.4	28.1	67.3	89.3	313.1
Beef	512.7	1,015.1	926.2	1,107.8	837.8
Fresh milk	12,296.8	13,372.8	14,200.3	14,071.9	15,662.7
Chicken/Duck egg	98,020.3	105,382.3	71,248.9	61,430.6	62,405.1
FISHERIES					
Pomfret	932.6	1,310.6	1,419.6	1,313.2	193.6
Torpedo scad	185.7	656.9	455.3	564.1	177.9
Freshwater catfish	1,252.1	2,819.9	1,674.5	1,145.3	1,004.0
Threadfin bream	98.9	244.5	490.9	275.0	56.4
Crab	4,121.8	6,278.1	3,454.8	6,047.2	4,814.2
Mackerel	5,836.8	31,040.5	12,104.9	5,906.5	14,532.4
Red snapper	997.6	1,343.1	875.7	788.4	70.5
Stingray	308.4	430.3	289.1	295.7	107.0
River catfish	60.3	4.0	-	-	-
Sardine	397.5	340.3	775.2	811.4	660.6
Seabass	3,995.6	6,532.7	7,811.4	10,400.2	12,775.2
Cuttlefish	31,602.3	32,386.6	35,790.6	40,866.1	37,623.4
Tilapia	439.0	575.5	560.0	859.8	468.5
Tuna	8,134.9	3,102.0	3,200.4	6,954.4	6,734.1
Shrimp	29,408.3	34,159.6	32,906.6	31,823.9	28,346.1

Table 3: Imports of Selected Agricultural Items, Malaysia, 2020-2024

Item	Import (tonnes)				
	2020	2021	2022	2023	2024
Rice ('000 tonnes)	1,109.8	1,062.0	1,112.5	1,281.8	1,500.0
CROPS					
Starfruit	0.7	0.4	0.2	0.1	0.1
Papaya	307.4	311.5	502.1	1,057.4	930.6
Dragon Fruit	2,454.6	2,582.1	2,843.6	2,994.5	4,133.0
Jackfruit	227.4	768.5	73.0	924.8	347.8
Durian	4,901.9	6,727.7	6,802.0	18,928.2	10,563.3
Apple	105,736.5	105,635.0	103,889.3	101,362.8	100,419.3
Sweet corn	3,287.9	3,782.7	2,722.1	2,322.0	2,041.5
Guava	4,146.1	3,197.0	4,460.8	3,454.0	3,676.7
Coconut	286,031.2	254,455.2	252,091.4	271,733.2	305,385.1
Langsat	1,161.9	1,042.8	533.3	3,031.6	2,686.1
Pomelo	1,737.4	3,068.4	2,650.9	2,144.9	2,956.3
Manggo	54,878.1	69,646.3	22,941.6	50,047.2	48,838.0
Mangosteen	4,029.8	3,970.7	4,664.2	3,134.0	3,823.8
Pinapple	1,587.1	1,119.9	1,186.9	1,003.0	880.1
Banana	27,898.0	23,701.3	19,535.4	35,456.7	32,862.1
Rambutan	1,714.3	2,126.4	2,798.0	1,783.4	1,817.8
Watermelon	7,394.1	6,868.6	7,905.4	10,907.8	16,937.2
Spinash	891.3	1,274.0	1,205.4	1,553.2	1,739.2
Lady's finger	411.0	630.7	846.0	993.1	847.0
Chilli	66,294.9	73,725.9	77,857.6	70,922.4	83,853.0
French bean	347.5	609.4	650.8	840.9	754.2
Long bean	900.1	1,129.5	1,472.4	1,971.7	1,976.7
Round cabbage	136,747.9	139,035.7	146,331.9	160,563.7	171,544.2
Lettuce	7,425.9	7,644.4	7,018.3	7,633.9	9,073.1
Mustard	10,209.3	11,051.6	12,019.1	9,357.8	6,903.5
Brinjal	2,524.9	3,945.8	4,288.7	3,926.8	4,804.3
Cucumber	8,752.8	12,523.2	12,085.9	12,015.3	12,351.5
Tomato	1,590.0	6,845.2	5,742.1	6,899.1	7,021.8
Mushroom	12,494.3	17,512.5	17,876.4	20,074.0	21,154.1
Ginger	50,586.8	51,737.3	57,136.6	55,354.8	62,922.3
Lime	3,279.2	6,193.9	9,453.1	12,797.4	13,208.7
Sugarcane	153.4	81.5	117.1	306.6	109.2
Cassava	1,110.1	811.5	847.4	887.8	6,148.9
Sweet potato	19,017.9	17,291.1	19,236.8	21,833.5	24,720.9
Onion	435,972.2	445,069.2	485,127.1	524,788.2	505,129.2
Shallot	40,601.7	39,543.8	38,567.6	39,824.2	83,076.3
Garlic	112,687.5	137,573.2	161,730.0	196,126.0	226,116.8
LIVESTOCK					
Chicken meat	68,243.9	96,183.5	171,900.2	237,421.0	217,173.8
Pork	13,439.3	14,939.4	33,516.8	64,771.9	65,218.4
Duck meat	0.1	10.1	109.2	82.4	25.5
Mutton	37,785.9	29,277.3	43,206.0	36,852.8	46,208.4
Beef	153,290.6	159,188.9	208,867.5	205,246.9	210,393.9
Fresh milk	35,607.5	42,995.0	43,194.8	33,980.0	36,868.8
Chicken/Duck egg	25.9	-	105.2	239.1	27.5
FISHERIES					
Pomfret	8,859.2	10,961.7	12,263.7	10,679.3	7,063.7
Torpedo scad	1,091.7	2,547.3	2,818.7	1,327.4	940.7
Freshwater catfish	1,578.0	359.5	832.0	621.9	4,754.6
Threadfin bream	78.4	338.8	801.0	241.1	96.3
Crab	4,993.4	5,611.6	3,820.0	4,997.2	4,723.1
Mackerel	28,444.2	29,912.3	55,518.9	54,063.0	50,385.7
Red snapper	1,330.9	1,929.4	1,882.1	1,790.3	219.5
Stingray	2,672.9	2,695.6	3,080.2	2,490.8	1,889.8
River catfish	-	-	5.7	5.0	-
Sardine	19,328.3	20,530.7	23,867.3	15,934.9	15,799.0
Seabass	1,868.1	1,831.9	996.5	1,349.3	543.0
Cuttlefish	33,775.4	46,707.2	56,869.9	61,375.5	57,062.7
Tilapia	468.2	959.8	1,555.3	1,535.9	1,092.1
Tuna	1,827.4	3,911.0	2,601.8	1,529.0	1,215.7
Shrimp	26,853.2	33,451.5	38,425.1	41,898.0	39,174.9