



KEMENTERIAN EKONOMI
JABATAN PERANGKAAN MALAYSIA

INDEKS PERDAGANGAN LUAR NEGERI BULANAN

MONTHLY EXTERNAL TRADE INDICES



2025

OGOS
AUGUST

JABATAN PERANGKAAN MALAYSIA
DEPARTMENT OF STATISTICS MALAYSIA



KEMENTERIAN EKONOMI
JABATAN PERANGKAAN MALAYSIA

INDEKS PERDAGANGAN LUAR NEGERI *EXTERNAL TRADE INDICES* (2010=100)

OGOS 2025
AUGUST 2025

Pemakluman

Kepengerusian ASEAN-Malaysia 2025: Jabatan Perangkaan Malaysia (DOSM) akan mempengerusikan Jawatankuasa Sistem Statistik Komuniti ASEAN Ke-15 (ACSS15) yang bertujuan untuk memperkukuh kerjasama statistik ke arah pembangunan serantau yang mampan.

Malaysia buat julung kalinya telah menduduki tangga pertama (1) di peringkat global dalam laporan dwi-tahunan *Open Data Inventory* (ODIN) 2024/25 yang dikeluarkan oleh *Open Data Watch* (ODW), mengatasi 198 negara lain. Pencapaian ini merupakan lonjakan ketara daripada kedudukan ke-67 dalam penilaian ODIN 2022/23.

Kerajaan Malaysia telah mengisytiharkan 20 Oktober sebagai Hari Statistik Negara (MyStats Day), dengan tema 'Statistik Nadi Kehidupan'. Sementara itu, Hari Statistik Dunia Keempat akan disambut pada 20 Oktober 2025 dengan tema '*Driving Change with Quality Statistics and Data for Everyone*'.

OpenDOSM NextGen adalah medium yang menyediakan katalog data dan visualisasi bagi memudahkan pengguna menganalisis pelbagai data dan boleh diakses melalui portal <https://open.dosm.gov.my>.

Announcement

ASEAN-Malaysia 2025 Chairmanship: The Department of Statistics Malaysia (DOSM) will chair the 15th ASEAN Community Statistical System Committee (ACSS15) which aims to strengthen the statistical cooperation towards sustainable regional development.

Malaysia, for the first time, ranked as number one (1) globally in the biennial Open Data Inventory (ODIN) 2024/25 report released by Open Data Watch (ODW), surpassing 198 other countries. This achievement marks a significant leap from its 67th position in the ODIN 2022/23 assessment.

The Government of Malaysia has declared October 20th as National Statistics Day (MyStats Day), with the theme 'Statistics is the Essence of Life.' Meanwhile, the Fourth World Statistics Day will be celebrated on 20th October 2025, with the theme 'Driving Change with Quality Statistics and Data for Everyone'.

OpenDOSM NextGen is a medium that provides data catalogue and visualisations to facilitate users' analysis and can be accessed through <https://open.dosm.gov.my>.

JABATAN PERANGKAAN MALAYSIA
DEPARTMENT OF STATISTICS MALAYSIA

Diterbitkan dan dicetak oleh / *Published and printed by:*

Jabatan Perangkaan Malaysia
Department of Statistics, Malaysia

Blok C6, Kompleks C,
Pusat Pentadbiran Kerajaan Persekutuan
62514 Putrajaya,

MALAYSIA

Tel. : 03-8885 7000
Faks : 03-8888 9248
Portal : <https://www.dosm.gov.my>
Facebook / X / Instagram : StatsMalaysia
E-mel / *E-mail* : info@dosm.gov.my (pertanyaan umum / *general enquiries*)
data@dosm.gov.my (pertanyaan & permintaan data / *data request & enquiries*)

Harga / *Price* : RM5.00

Diterbitkan pada September 2025 / *Published on September 2025*

Hakcipta terpelihara / *All rights reserved.*

Tiada bahagian daripada terbitan ini boleh diterbitkan semula, disimpan untuk pengeluaran atau ditukar dalam apa-apa bentuk atau alat apa jua pun kecuali setelah mendapat kebenaran daripada Jabatan Perangkaan Malaysia.

Pengguna yang mengeluarkan sebarang maklumat dari terbitan ini sama ada yang asal atau diolah semula hendaklah meletakkan kenyataan berikut:

“Sumber: Jabatan Perangkaan Malaysia”.

No part of this publication may be reproduced or distributed in any form or by any means or stored in data base without the prior written permission from Department of Statistics, Malaysia.

Users reproducing content of this publication with or without adaptation should quote the following:

“Source: Department of Statistics, Malaysia.”

ISSN 1675 - 4344

KANDUNGAN

Contents

	Muka Surat
	<i>Page</i>
Kata Pengantar <i>Preface</i>	i - ii
Ringkasan Penemuan <i>Summary of Findings</i>	iii - xv
Carta & Jadual Statistik <i>Statistical Tables & Charts</i>	
1.1 Carta Indeks Nilai Seunit Eksport dan Import <i>Export and Import Unit Value Indices Charts</i>	1
1.2 Carta Peratus Perubahan Bulan ke Bulan Indeks Nilai Seunit Eksport dan Import <i>Month-on-month Percentage Change in Export and Import Unit Value Indices Charts</i>	1
1.3 Carta Peratus Perubahan Tahun ke Tahun Indeks Nilai Seunit Eksport dan Import <i>Year-on-year Percentage Change in Export and Import Unit Value Indices Charts</i>	2
2.1 Carta Indeks Volum Eksport dan Import <i>Export and Import Volume Indices Charts</i>	2
2.2 Carta Peratus Perubahan Bulan ke Bulan Indeks Volum Eksport dan Import <i>Month-on-month Percentage Change in Export and Import Volume Indices Charts</i>	3
2.3 Carta Peratus Perubahan Tahun ke Tahun Indeks Volum Eksport dan Import <i>Year-on-year Percentage Change in Export and Import Volume Indices Charts</i>	3
3.1 Carta Indeks Terma Perdagangan <i>Terms of Trade Index Charts</i>	4
3.2 Carta Peratus Perubahan Bulan ke Bulan Indeks Terma Perdagangan <i>Month-on-month Percentage Change in Terms of Trade Index Charts</i>	4
3.3 Carta Peratus Perubahan Tahun ke Tahun Indeks Terma Perdagangan <i>Year-on-year Percentage Change in Terms of Trade Index Charts</i>	5
1A Jadual Indeks Nilai Seunit bagi Eksport (2010=100) Mengikut Seksyen Barangan (S.I.T.C.) <i>Export Unit Value Index (2010=100) by Commodity Sections (S.I.T.C.) Tables</i>	6
1B Jadual Peratus Perubahan Bulan ke Bulan Indeks Nilai Seunit bagi Eksport (2010=100) Mengikut Seksyen Barangan (S.I.T.C.) <i>Month-on-month Percentage Change Export Unit Value Index (2010=100) by Commodity Sections (S.I.T.C.) Tables</i>	7
1C Jadual Peratus Perubahan Tahun ke Tahun Indeks Nilai Seunit bagi Eksport (2010=100) Mengikut Seksyen Barangan (S.I.T.C.) <i>Year-on-year Percentage Change Export Unit Value Index (2010=100) by Commodity Sections (S.I.T.C.) Tables</i>	8
2A Jadual Indeks Volum bagi Eksport (2010=100) Mengikut Seksyen Barangan (S.I.T.C.) <i>Export Volume Index (2010=100) by Commodity Sections (S.I.T.C.) Tables</i>	9
2B Jadual Peratus Perubahan Bulan ke Bulan Indeks Volum bagi Eksport (2010=100) Mengikut Seksyen Barangan (S.I.T.C.) <i>Month-on-month Percentage Change Export Volume Index (2010=100) by Commodity Sections (S.I.T.C.) Tables</i>	10

2C	Jadual Peratus Perubahan Tahun ke Tahun Indeks Volum bagi Eksport (2010=100) Mengikut Seksyen Barangan (S.I.T.C.) <i>Year-on-year Percentage Change Export Volume Index (2010=100) by Commodity Sections (S.I.T.C.) Tables</i>	11
3A	Jadual Indeks Nilai Seunit bagi Import (2010=100) Mengikut Seksyen Barangan (S.I.T.C.) <i>Import Unit Value Index (2010=100) by Commodity Sections (S.I.T.C.) Tables</i>	12
3B	Jadual Peratus Perubahan Bulan ke Bulan Indeks Nilai Seunit bagi Import (2010=100) Mengikut Seksyen Barangan (S.I.T.C.) <i>Month-on-month Percentage Change Import Unit Value Index (2010=100) by Commodity Sections (S.I.T.C.) Tables</i>	13
3C	Jadual Peratus Perubahan Tahun ke Tahun Indeks Nilai Seunit bagi Import (2010=100) Mengikut Seksyen Barangan (S.I.T.C.) <i>Year-on-year Percentage Change Import Unit Value Index (2010=100) by Commodity Sections (S.I.T.C.) Tables</i>	14
4A	Jadual Indeks Volum bagi Import (2010=100) Mengikut Seksyen Barangan (S.I.T.C.) <i>Import Volume Index (2010=100) by Commodity Sections (S.I.T.C.) Tables</i>	15
4B	Jadual Peratus Perubahan Bulan ke Bulan Indeks Volum bagi Import (2010=100) Mengikut Seksyen Barangan (S.I.T.C.) <i>Month-on-month Percentage Change Import Volume Index (2010=100) by Commodity Sections (S.I.T.C.) Tables</i>	16
4C	Jadual Peratus Perubahan Tahun ke Tahun Indeks Volum bagi Import (2010=100) Mengikut Seksyen Barangan (S.I.T.C.) <i>Year-on-year Percentage Change Import Volume Index (2010=100) by Commodity Sections (S.I.T.C.) Tables</i>	17
5A	Jadual Terma Perdagangan (2010=100) Mengikut Seksyen Barangan (S.I.T.C.) <i>Terms of Trade (2010=100) by Commodity Sections (S.I.T.C.) Tables</i>	18
5B	Jadual Peratus Perubahan Bulan ke Bulan Terma Perdagangan (2010=100) Mengikut Seksyen Barangan (S.I.T.C.) <i>Month-on-month Percentage Change Terms of Trade (2010=100) by Commodity Sections (S.I.T.C.) Tables</i>	19
5C	Jadual Peratus Perubahan Tahun ke Tahun Terma Perdagangan (2010=100) Mengikut Seksyen Barangan (S.I.T.C.) <i>Year-on-year Percentage Change Terms of Trade (2010=100) by Commodity Sections (S.I.T.C.) Tables</i>	20
6	Jadual Indeks Volum Eksport – Asal & Pelarasan Musim (2010=100) <i>Export unit Volume Index – Actual & Seasonally Adjusted (2010=100) Tables</i>	21
7	Jadual Indeks Volum Import – Asal & Pelarasan Musim (2010=100) <i>Import unit Volume Index – Actual & Seasonally Adjusted (2010=100) Tables</i>	22
Nota Teknikal <i>Technical Notes</i>		23-30
Lampiran <i>Appendix</i>		32-33

KATA PENGANTAR

Penerbitan Indeks Perdagangan Luar Negeri (IPLN) Malaysia merupakan penerbitan bulanan yang memaparkan Indeks Nilai Seunit, Indeks Volum dan Terma Perdagangan meliputi 10 seksyen utama barangan selaras dengan klasifikasi *United Nations "Standard International Trade Classification, Revision 4 (S.I.T.C. Rev 4)"*. IPLN disusun berdasarkan data perdagangan luar negeri Malaysia yang sebahagian besarnya diproses daripada borang pengikraran kastam.

IPLN telah disusun buat pertama kalinya dengan menggunakan tahun 1970 sebagai tahun asas (1970=100), seterusnya diasaskan semula kepada tahun 1999, 2005 dan 2010. Bermula bulan rujukan Januari 2018, penyusunan IPLN masih mengekalkan 2010 sebagai "tempoh rujukan indeks" dengan 2013 sebagai "tempoh rujukan wajaran". Bermula bulan rujukan Januari 2019, IPLN dikemaskini sekali lagi menggunakan tahun 2015 sebagai "tempoh rujukan wajaran" dan masih mengekalkan tahun asas yang sama 2010=100.

Objektif utama IPLN adalah untuk mengukur perubahan paras nilai seunit serta volum eksport dan import Malaysia.

Ringkasan penemuan utama dan jadual terperinci indeks di peringkat seksyen (S.I.T.C. 1 digit) dipaparkan pada bahagian pertama dan kedua penerbitan. Seterusnya, nota teknikal berkaitan dengan objektif, skop dan liputan, konsep dan definisi serta kaedah pengiraan yang digunakan dimuatkan pada bahagian terakhir penerbitan bagi meningkatkan kefahaman berkenaan dengan IPLN.

Jabatan Perangkaan Malaysia merakamkan setinggi-tinggi penghargaan kepada semua pihak yang telah menyumbang secara langsung dan tidak langsung dalam merealisasikan penerbitan ini. Setiap maklum balas dan cadangan daripada semua pihak untuk penambahbaikan penerbitan ini pada masa hadapan amat dihargai.

Dato' Sri Dr. Mohd Uzir Mahidin

Ketua Perangkawan Malaysia

September 2025

PREFACE

The publication of External Trade Indices (ETI), Malaysia is a monthly publication which presents Unit Value Index, Volume Index and Terms of Trade covering 10 main sections of goods in line with classification of the United Nations "Standard International Trade Classification, Revision 4 (S.I.T.C. Rev 4)". ETI is compiled based on Malaysia external trade data which is in turn mainly processed from custom declaration forms.

The ETI was compiled for the first time using 1970 as the base year (1970=100), subsequently it has been rebased to 1999, 2005 and 2010. Commencing in reference month of January 2018, the compilation of ETI maintained 2010 as the "index reference period" with 2013 as "weight reference period". Effective with release of publication for January 2019, the ETI again updated using year 2015 as "weight reference period" while maintaining the same base year 2010=100.

The main objective of ETI is to measure the changes in the levels of unit values and volumes of Malaysia's merchandise imports and exports.

The summary of the main findings and the detailed index tables at sections (1-digit S.I.T.C) level are presented in the first and second part of this publication. Meanwhile, the technical notes on objectives, scope and coverage, concepts and definitions and the calculation techniques used are included in the final part of this publication to enhance understanding of the ETI.

The Department of Statistics Malaysia (DOSM) gratefully acknowledges the cooperation rendered by all parties who have contributed directly and indirectly in realising this publication. Every feedback and suggestions towards improving the future publication is highly appreciated.

Dato' Sri Dr. Mohd Uzir Mahidin
Chief Statistician Malaysia
September 2025



1. RINGKASAN PENEMUAN

SUMMARY OF FINDINGS





INDEKS PERDAGANGAN LUAR NEGERI, OGOS 2025

External Trade Indices, August 2025

NILAI (RM BILION) Value (RM BILLION)

Eksport Exports

JUL '25
July '25 140.1
▼ 6.0%

OGOS '25P
Aug '25P 131.6

Import Imports

JUL '25
July '25 125.5
▼ 8.0%

OGOS '25P
Aug '25P 115.5

Segala perubahan adalah berdasarkan perbandingan bulan ke bulan.
All changes are based on month-on-month comparison.

TERMA PERDAGANGAN Terms of Trade

▲ 1.2%

▲ 2.1%
Minyak Galian
Mineral Fuels

▲ 1.3%
Minyak & Lemak Binatang & Sayur-sayuran
Animal & Vegetable Oils & Fats

▲ 0.7%
Alat Jentera & Kelengkapan Pengangkutan
Machinery & Transport Equipment

Segala perubahan adalah berdasarkan perbandingan bulan ke bulan.
All changes are based on month-on-month comparison.

EKSPORT Exports

Exports

Indeks Nilai Seunit Unit Value Index

▲ 1.0%

▲ 2.4%

▲ 0.9%

▲ 0.6%

Minyak & Lemak Binatang & Sayur-sayuran
Animal & Vegetable Oils & Fats

Minyak Galian
Mineral Fuels

Alat Jentera & Kelengkapan Pengangkutan
Machinery & Transport Equipment

Segala perubahan adalah berdasarkan perbandingan bulan ke bulan.
All changes are based on month-on-month comparison.

Indeks Volum Volume Index

▼ 6.9%

Barang-barang Keluaran Kilang
Manufactured Goods

▼ 12.3%

Alat Jentera & Kelengkapan Pengangkutan
Machinery & Transport Equipment

▼ 11.5%

Makanan
Food

▼ 7.4%

Segala perubahan adalah berdasarkan perbandingan bulan ke bulan.
All changes are based on month-on-month comparison.

IMPORT Imports

Imports

Indeks Nilai Seunit Unit Value Index

▼ 0.2%

▼ 1.2%

▼ 0.4%

▼ 0.3%

Minyak Galian
Mineral Fuels

Bahan Kimia
Chemicals

Barang-barang Keluaran Kilang
Manufactured Goods

Segala perubahan adalah berdasarkan perbandingan bulan ke bulan.
All changes are based on month-on-month comparison.

Indeks Volum Volume Index

▼ 7.8%

Minyak Galian
Mineral Fuels

▼ 16.4%

Pelbagai Barang Keluaran Kilang
Miscellaneous Manufactured Articles

▼ 9.2%

Alat Jentera & Kelengkapan Pengangkutan
Machinery & Transport Equipment

▼ 8.8%

Segala perubahan adalah berdasarkan perbandingan bulan ke bulan.
All changes are based on month-on-month comparison.

Sumber: Indeks Perdagangan Luar Negeri, Ogos 2025, Jabatan Perangkaan Malaysia

Source : External Trade Indices, August 2025, Department of Statistics Malaysia



INDEKS PERDAGANGAN LUAR NEGERI OGOS 2025

PRESTASI PERDAGANGAN MALAYSIA

Prestasi dagangan Malaysia pada Ogos 2025 mencatatkan prestasi yang bercampur-campur di beberapa sektor utama. Nilai eksport mencatatkan RM131.6 bilion, menunjukkan peningkatan sebanyak RM2.5 bilion atau 1.9 peratus berbanding tempoh yang sama tahun sebelumnya. Sebaliknya, import mengalami penyusutan kepada RM115.5 bilion, merosot sebanyak RM7.3 bilion atau 5.9 peratus secara tahunan. Jumlah dagangan keseluruhan menurun kepada RM247.1 bilion, berkurang sebanyak RM4.8 bilion atau 1.9 peratus berbanding Ogos 2024. Di samping itu, imbalan dagangan negara mencatat lebih sebanyak RM16.1 bilion, meningkat dengan ketara sebanyak RM9.8 bilion atau 153.8 peratus secara tahunan

Perbandingan secara bulanan menunjukkan penyusutan eksport, import dan jumlah dagangan masing-masing 6.0 peratus, 8.0 peratus dan 6.9 peratus. Namun, lebih dagangan mencatatkan kenaikan 10.4 peratus atau RM1.5 bilion.

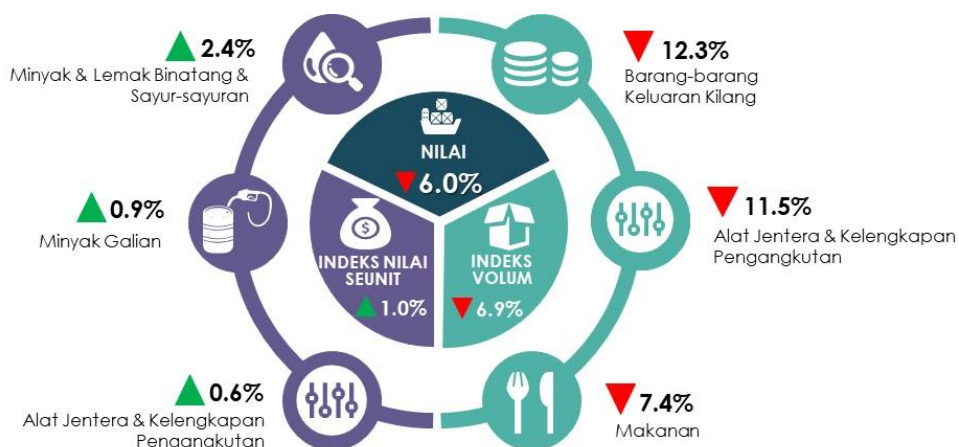
Eksport, import, jumlah dagangan dan lebih dagangan bagi bulan Januari hingga Ogos 2025 masing-masing meningkat 3.9 peratus, 3.6 peratus, 3.8 peratus dan 7.4 peratus berbanding tempoh yang sama pada tahun sebelumnya.

PERBANDINGAN BULAN KE BULAN

EKSPORT

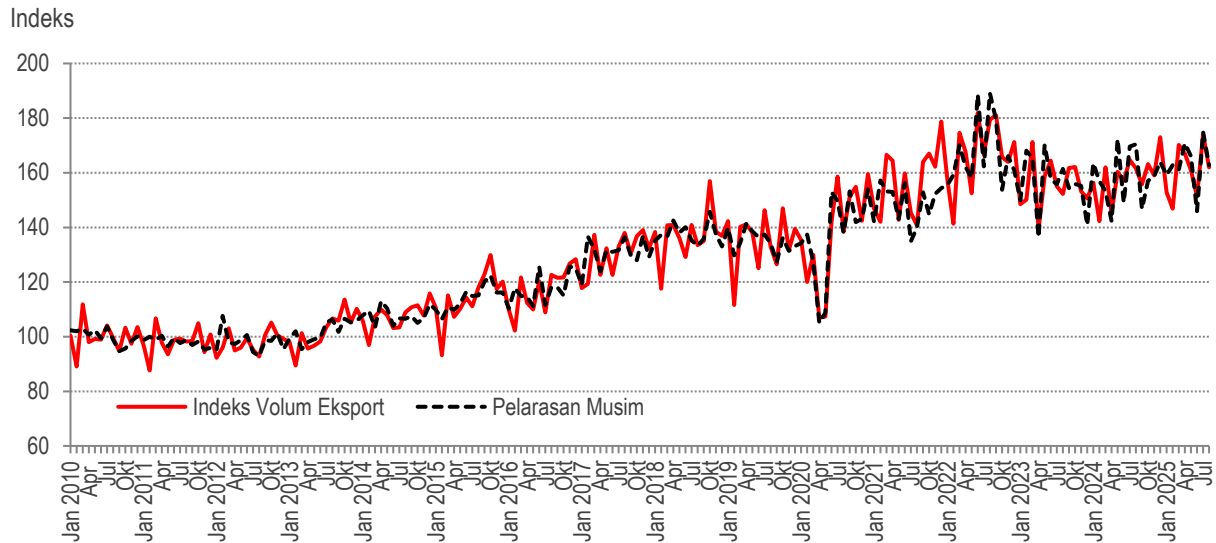
Indeks nilai seunit eksport berkembang 1.0 peratus pada Ogos 2025 berbanding bulan sebelumnya. Peningkatan ini disumbangkan oleh kenaikan indeks minyak & lemak binatang & sayur-sayuran (+2.4%), minyak galian (+0.9%) dan alat jentera & kelengkapan pengangkutan (+0.6%).

Walau bagaimanapun, **indeks volum eksport** jatuh 6.9 peratus pada Ogos 2025. Penurunan ini disebabkan oleh barang-barang keluaran kilang (-12.3%), alat jentera & kelengkapan pengangkutan (-11.5%), dan makanan (-7.4%). **Indeks volum eksport pelarasan bermusim** menurun 6.9 peratus daripada 174.9 mata kepada 162.8 mata (**Carta 1**).



Paparan 1: Prestasi Nilai Eksport, Indeks Nilai Seunit dan Indeks Volum serta Penyumbang Utama Indeks Nilai Seunit dan Indeks Volum Eksport

PERBANDINGAN BULAN KE BULAN

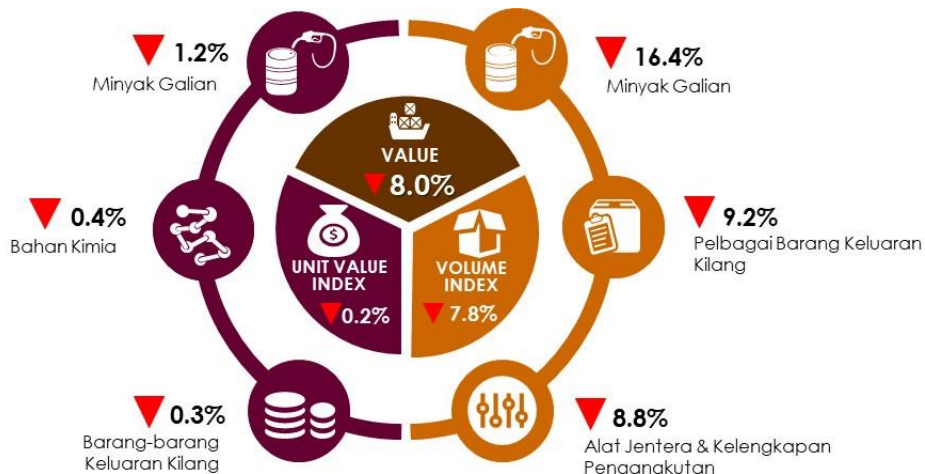


Carta 1: Indeks Volum Eksport - Asal & Pelarasan Musim

IMPORT

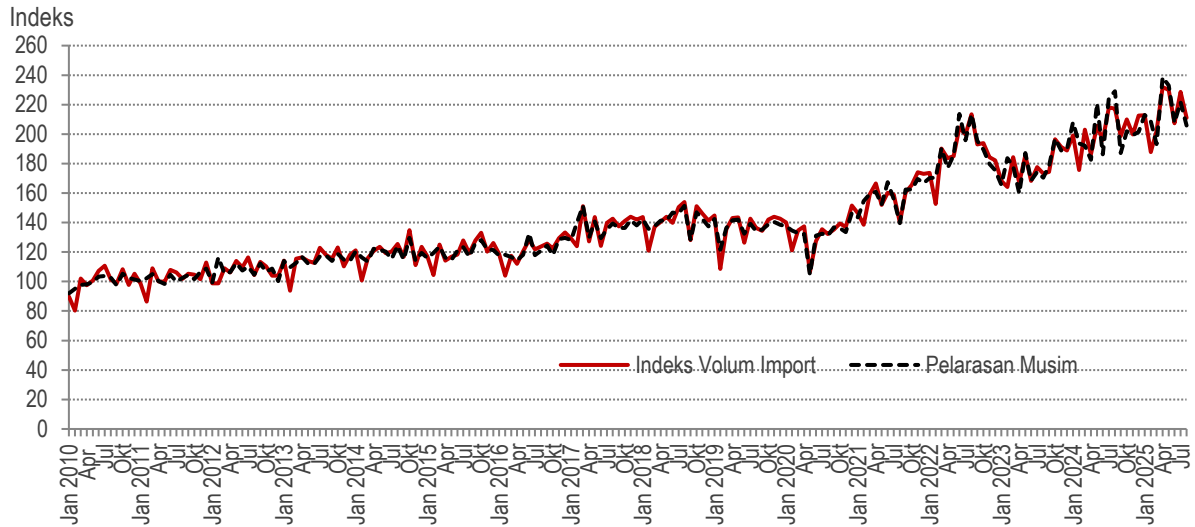
Indeks nilai seunit import merosot 0.2 peratus pada Ogos 2025, disumbangkan oleh kejatuhan indeks minyak galian (-1.2%), bahan kimia (-0.4%) dan barang-barang keluaran kilang (-0.3%).

Begitu juga, **indeks volum import** turut merosot 7.8 peratus pada Ogos 2025 berbanding bulan sebelum, disumbangkan oleh kejatuhan dalam indeks minyak galian (-16.4%), pelbagai barang keluaran kilang (-9.2%) dan alat jentera & kelengkapan pengangkutan (-8.8%). **Indeks volum import pelarasan bermusim** turut jatuh 7.2 peratus daripada 221.8 mata kepada 205.8 mata (Carta 2).



Paparan 2: Prestasi Nilai Import, Indeks Nilai Seunit dan Indeks Volum serta Penyumbang Utama Indeks Nilai Seunit dan Indeks Volum Import

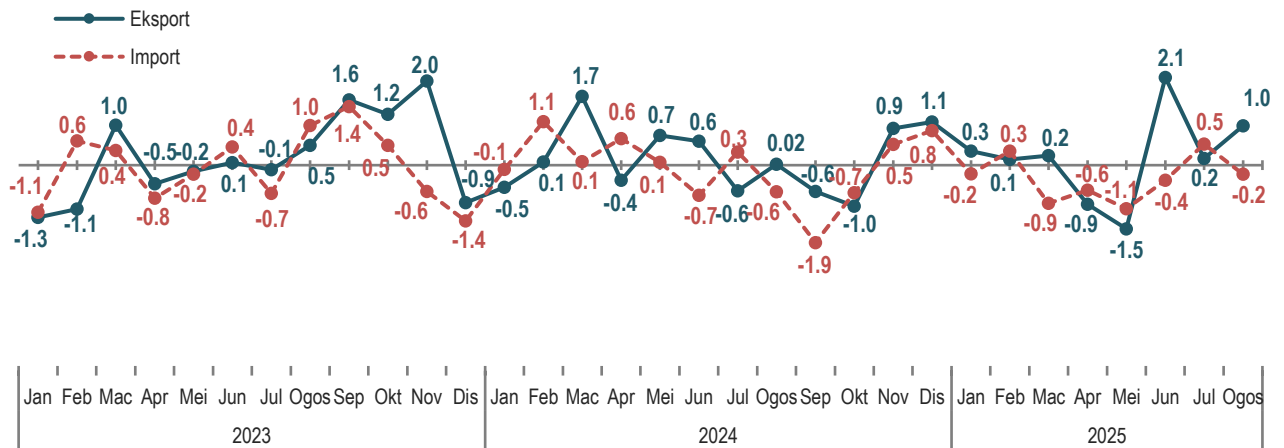
PERBANDINGAN BULAN KE BULAN



Carta 2: Indeks Volum Import - Asal & Pelarasan Musim

SIRI MASA INDEKS NILAI SEUNIT EKSPORT & IMPORT

Perbandingan bulan ke bulan, menunjukkan **indeks nilai seunit eksport** kekal dengan pertumbuhan positif manakala **indeks nilai seunit import** kembali ke trend negatif.



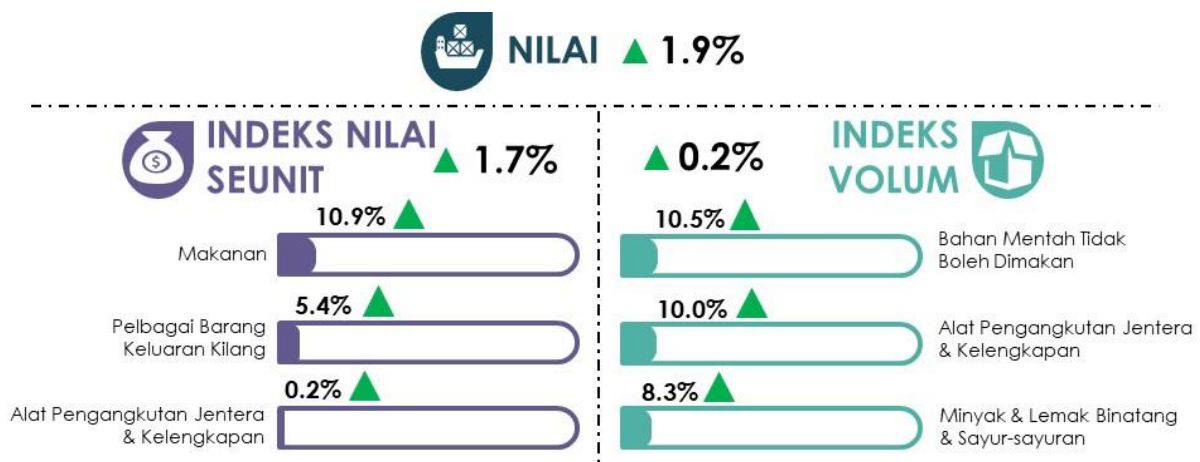
**Carta 3: Peratus Perubahan Bulan ke Bulan bagi Indeks Nilai Seunit Eksport & Import
Januari 2023 – Ogos 2025**

PERBANDINGAN TAHUN KE TAHUN

EKSPORT

Perbandingan tahun ke tahun menunjukkan **Indeks volum eksport** pada Ogos 2025 meningkat 0.2 peratus. Peningkatan ini disumbangkan oleh kenaikan indeks bahan mentah tidak boleh dimakan (+10.5%), alat jentera & kelengkapan pengangkutan (+10.0%) dan minyak & lemak binatang & sayur-sayuran (+8.3%).

Begitu juga, **indeks nilai seunit eksport** bertumbuh 1.7 peratus tahun ke tahun pada Ogos 2025. Pertumbuhan ini disebabkan oleh kenaikan dalam indeks makanan (+10.9%), pelbagai barang keluaran kilang (+5.4%) dan alat jentera & kelengkapan pengangkutan (+0.2%).



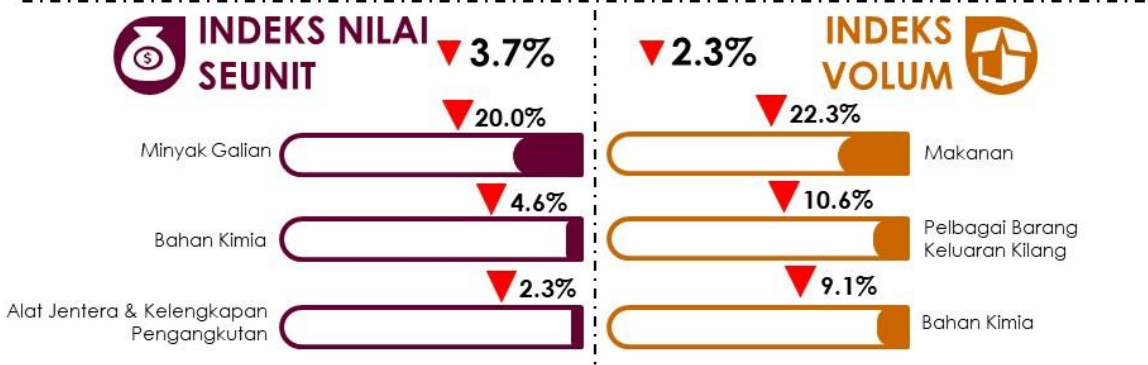
Paparan 3: Prestasi Nilai Eksport, Indeks Nilai Seunit dan Indeks Volum serta Penyumbang Utama Indeks Nilai Seunit dan Indeks Volum Eksport

IMPORT

Indeks nilai seunit import menyusut 3.7 peratus pada Ogos 2025 berbanding bulan yang sama tahun lalu. Penyusutan indeks volum import didorong oleh kejatuhan indeks minyak galian (-20.0%), bahan kimia (-4.6%), dan alat jentera & kelengkapan pengangkutan (-2.3%)

Begitu juga, **indeks volum import** menurun 2.3 peratus tahun ke tahun pada Ogos 2025. Kemerossotan ini disumbangkan oleh indeks makanan (-22.3%), barang-barang keluaran kilang (-10.6%) dan bahan kimia (-9.1%).

NILAI ▼ 5.9%

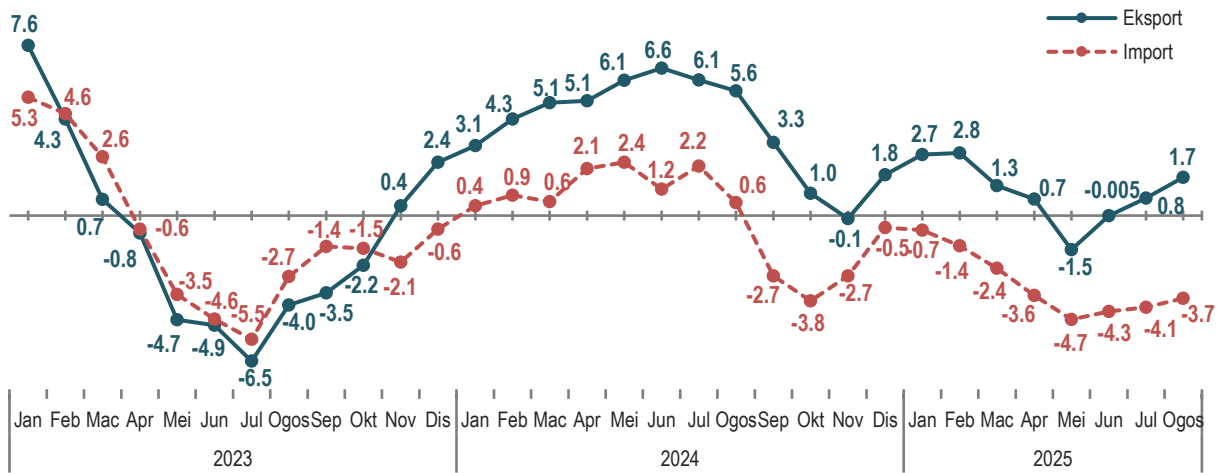


Paparan 4: Prestasi Nilai Import, Indeks Nilai Seunit dan Indeks Volum serta Penyumbang Utama Indeks Nilai Seunit dan Indeks Volum Import

PERBANDINGAN TAHUN KE TAHUN

SIRI MASA INDEKS NILAI SEUNIT EKSPORT & IMPORT

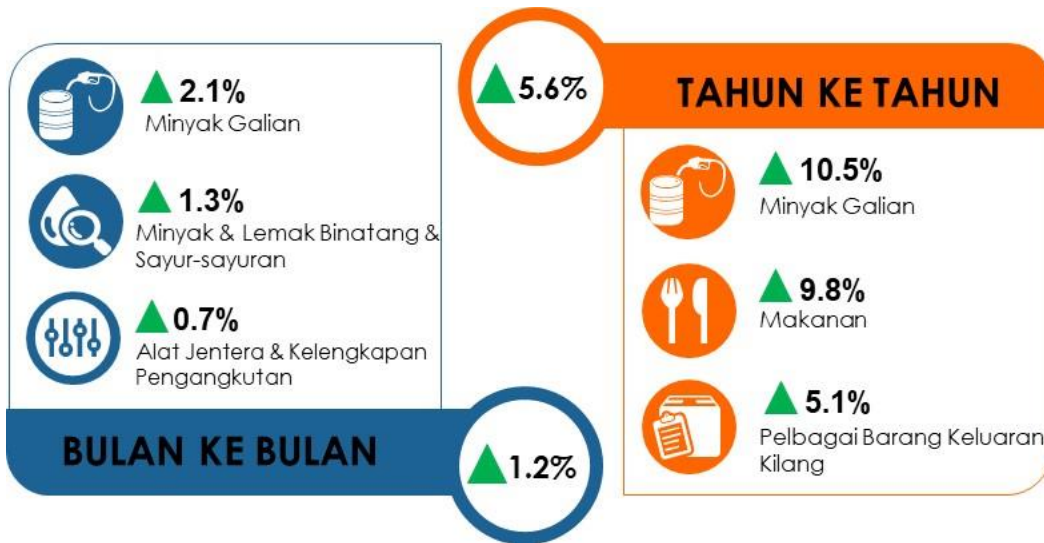
Prestasi tahun ke tahun bagi **indeks nilai seunit eksport** pada Ogos 2025 kekal di tren positif. Manakala, **indeks nilai seunit import** terus menunjukkan pertumbuhan negatif dalam tempoh dua belas bulan berturut-turut.



Carta 4: Peratus Perubahan Tahun ke Tahun bagi Indeks Nilai Seunit Eksport & Import Januari 2023 – August 2025

TERMA PERDAGANGAN

Terma Perdagangan Malaysia meningkat 1.2 peratus bulan ke bulan kepada 122.5 mata pada Ogos 2025, didorong oleh peningkatan indeks minyak galian (+2.1%), minyak & lemak binatang & sayur-sayuran (+1.3%) dan alat jentera & kelengkapan pengangkutan (+0.7%).

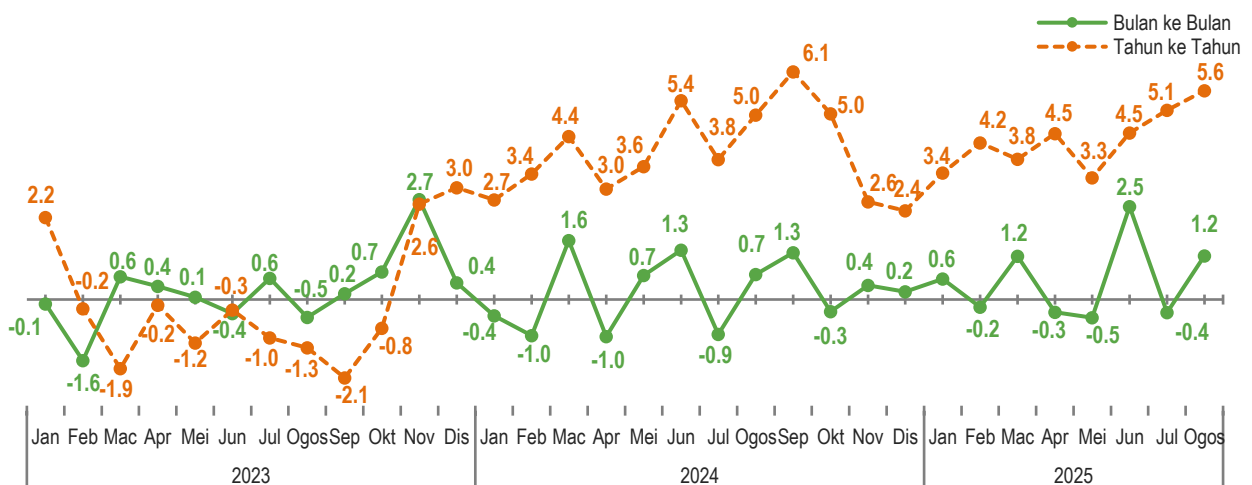


Paparan 5: Penyumbang Utama Terma Perdagangan Mengikut Bulan ke Bulan dan Tahun ke Tahun

Beraskan tahun ke tahun, **terma perdagangan** Malaysia turut meningkat 5.6 peratus daripada 116.0 mata pada Ogos tahun lalu. Peningkatan ini disumbangkan oleh kenaikan indeks minyak galian (+10.5%), makanan (+9.8%) dan pelbagai barang keluaran kilang (+5.1%).

SIRI MASA TERMA PERDAGANGAN

Terma perdagangan Malaysia mengekalkan pertumbuhan tahunan positif sejak November 2023. Manakala, prestasi bulan ke bulan terma perdagangan kembali menunjukkan pertumbuhan tren positif pada Ogos 2025.



Carta 5: Terma Perdagangan, Januari 2023 – Ogos 2025

EXTERNAL TRADE INDICES AUGUST 2025

MALAYSIA'S TRADE PERFORMANCE

Malaysia's trade performance in August 2025 showed mixed findings across key sectors. Export value recorded RM131.6 billion, representing an increase of RM2.5 billion or 1.9 per cent compared to the same period last year. Conversely, imports declined to RM115.5 billion, decreasing by RM7.3 billion or 5.9 per cent year-on-year. Total trade fell to RM247.1 billion, down by RM4.8 billion or 1.9 per cent compared to August 2024. Meanwhile, the trade balance recorded a surplus of RM16.1 billion, rising significantly by RM9.8 billion or 153.8 per cent year-on-year.

The monthly comparison showed declines in exports, imports and total trade of 6.0 per cent, 8.0 per cent and 6.9 per cent, respectively. However, the trade surplus recorded an increase of 10.4 per cent or RM1.5 billion.

Exports, imports, total trade and trade surplus from January to August 2025 increased by 3.9 per cent, 3.6 per cent, 3.8 per cent and 7.4 per cent respectively compared to the same period the previous year.

MONTH-ON-MONTH COMPARISON

EXPORTS

The **export unit value index** expanded 1.0 per cent in August 2025 as compared to the previous month. The expansion was contributed by the increase in the index of animals & vegetable oils & fats (+2.4%), mineral fuels (+0.9%) and machinery & transport equipment (+0.6%).

However, the **export volume index** dropped 6.9 per cent in August 2025. The decrease was contributed by the index of manufactured goods (-12.3%), machinery & transport equipment (-11.5%) and food (-7.4%). The **seasonally adjusted export volume index** decreased by 6.9 per cent from 174.9 points to 162.8 points (**Chart 1**).

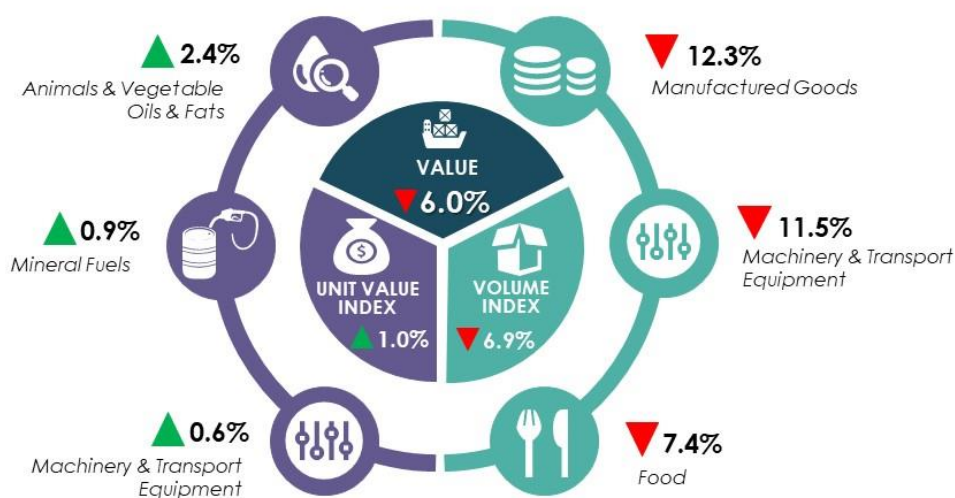


Exhibit 1: Export Value, Unit Value Index and Volume Index Performances and Main Contributors of Export Unit Value and Volume Indices

MONTH-ON-MONTH COMPARISON

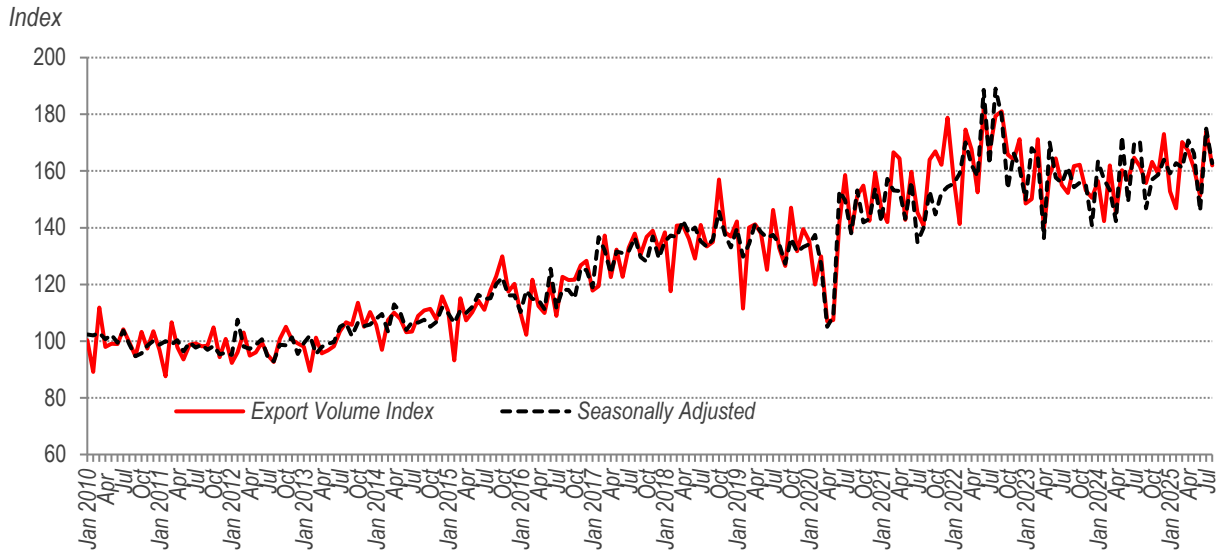


Chart 1: Export Volume Indices - Actual & Seasonally Adjusted

IMPORTS

The **import unit value index** decreased by 0.2 per cent in August 2025, contributed by the decrease in the index of mineral fuels (-1.2%), chemicals (-0.4) and manufactured goods (-0.3%).

Likewise, the **import volume index** also decreased by 7.8 per cent in August 2025 as compared to the previous month, contributed by the decrease in the index of mineral fuels (-16.4%), miscellaneous manufactured articles (-9.2%) and machinery & transport equipment (-8.8%). The **seasonally adjusted import volume index** also dropped by 7.2 per cent from 221.8 points to 205.8 points (**Chart 2**).

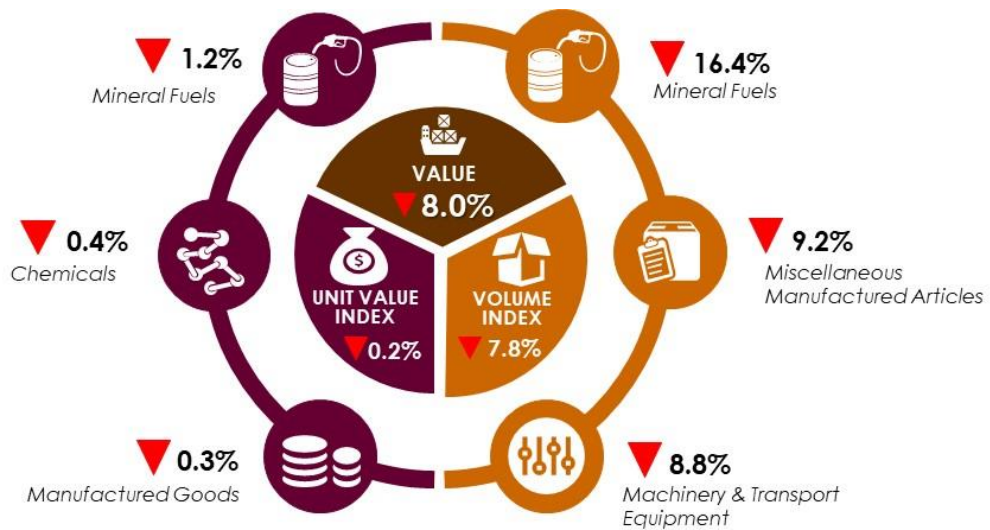


Exhibit 2: Import Value, Unit Value Index and Volume Index Performances and Main Contributors of Import Unit Value and Volume Indices

MONTH-ON-MONTH COMPARISON

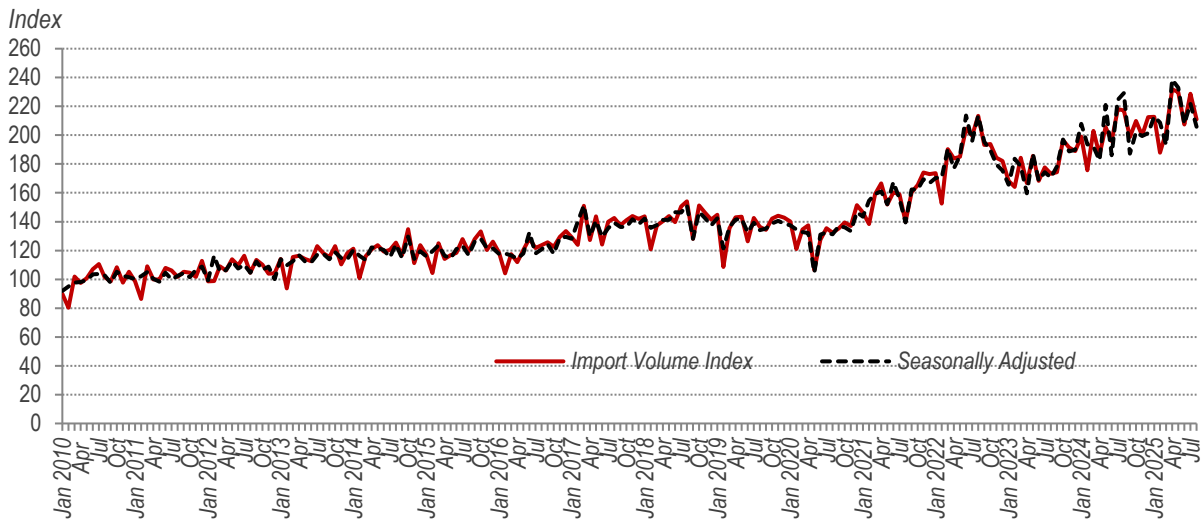
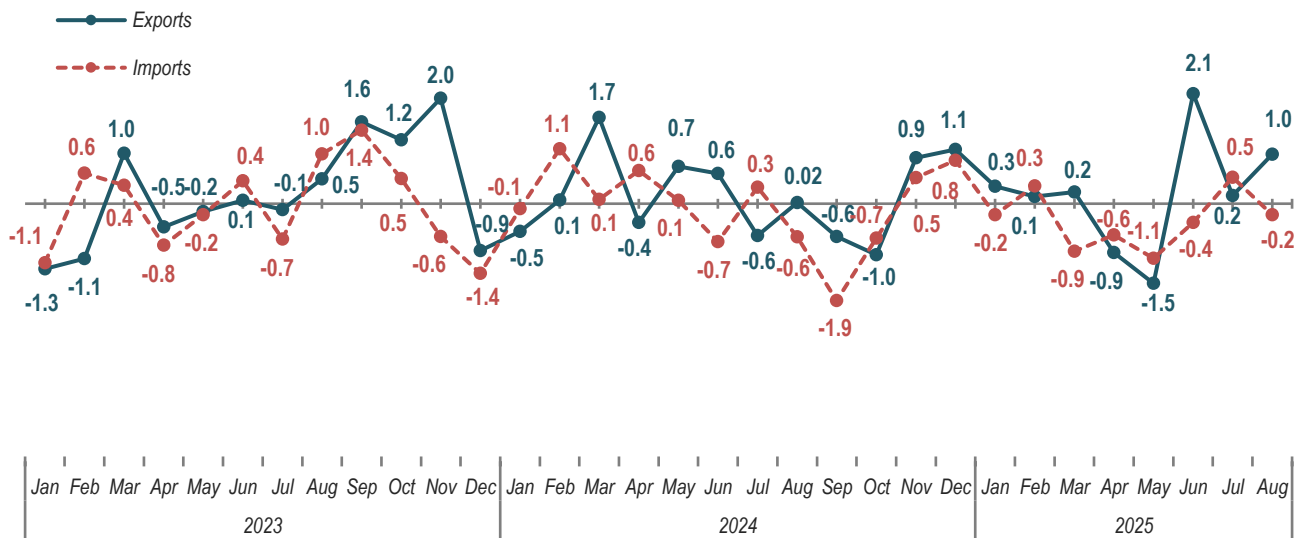


Chart 2: Import Volume Indices - Actual & Seasonally Adjusted

TIME-SERIES OF EXPORT & IMPORT UNIT VALUE INDICES

Month-on-month (m-o-m) comparison, shows that the **export unit value indices** retained a positive growth while the **import unit value indices** returned to a negative trend



**Chart 3: Month-on-Month Percentage Change of Export & Import Unit Value Indices
January 2023 – August 2025**

YEAR-ON-YEAR COMPARISON

EXPORTS

Year-on-year (y-o-y) comparison shows that the **export volume index** in August 2025 increase 0.2 per cent. The rise was contributed by the index of inedible crude materials (+10.5%), machinery & transport equipment (+10.0%), animal & vegetable oils & fats (+8.3%).

Similarly, the **export unit value index** grew by 1.7 per cent year-on-year (y-o-y) in August 2025. The growth was contributed by the increase in the index of food (+10.9%), miscellaneous manufactured articles (+5.4%) and machinery & transport equipment (+0.2%).

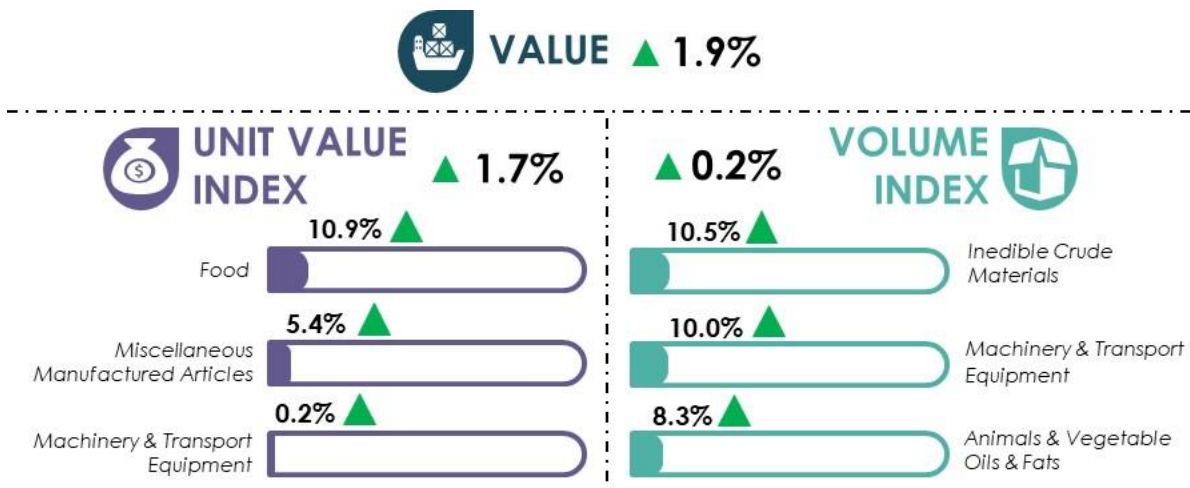


Exhibit 3: Export Value, Unit Value Index and Volume Index Performances and Main Contributors of Export Unit Value and Volume Indices

IMPORTS

The **import unit value index** dropped by 3.7 per cent in August 2025 as compared to the same month of the previous year. The decrease in the import unit value index was driven by the fall in the index of mineral fuels (-20.0%), chemicals (-4.6%) and machinery & transport equipment (-2.3%).

Correspondingly, the **import volume index** decreased by 2.3 per cent year-on-year (y-o-y) in August 2025. The decrement was contributed by the index of food (-22.3%), manufactured goods (-10.6%) and chemicals (-9.1%).

VALUE ▼ 5.9%

UNIT VALUE INDEX ▼ 3.7%

VOLUME INDEX ▼ 2.3%

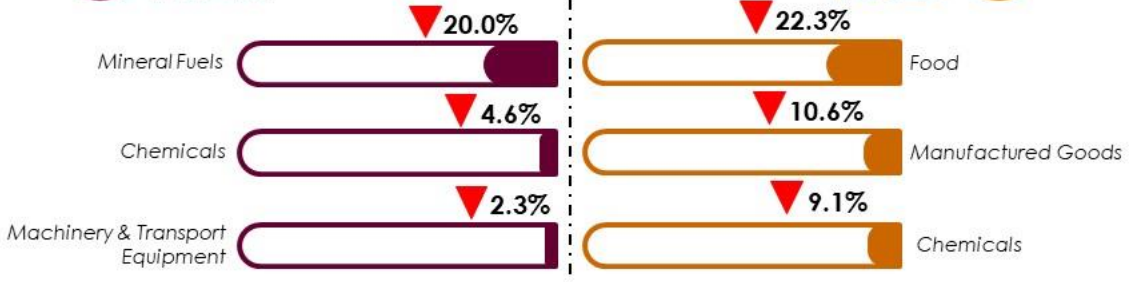


Exhibit 4: Import Value, Unit Value Index and Volume Index Performances and Main Contributors of Import Unit Value and Volume Indices

YEAR-ON-YEAR COMPARISON

TIME-SERIES OF EXPORT & IMPORT UNIT VALUE INDICES

Year-on-year (y-o-y) performance for **export unit values indices** in August 2025 retained its positive trend. Meanwhile, the **import unit value index** continued to show a negative growth for twelve consecutive months.

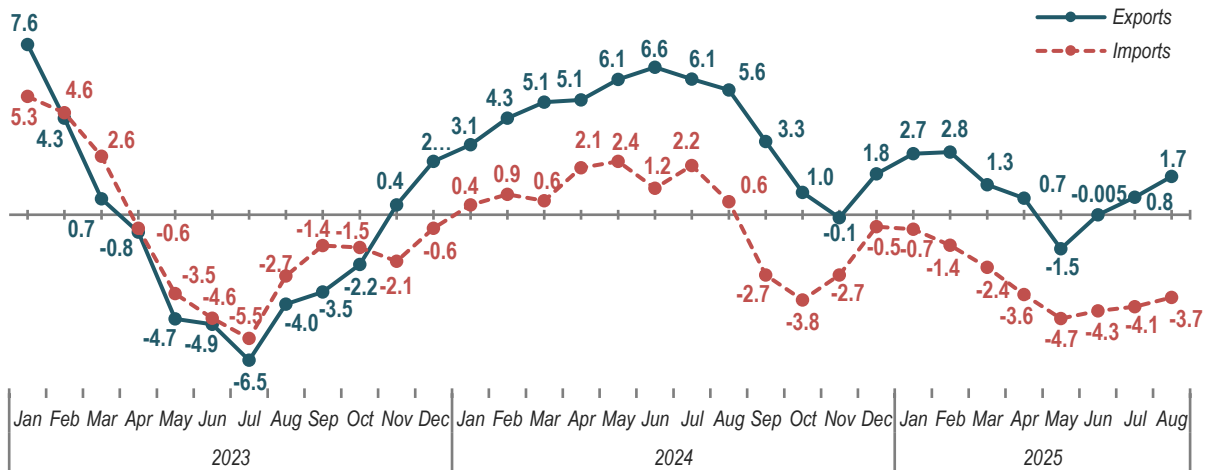


Chart 4: Year-on-Year Percentage Change of Export & Import Unit Value Indices January 2023 – August 2025

TERMS OF TRADE

Malaysia's **terms of trade** rose 1.2 per cent **month-on-month** to 122.5 points in August 2025, driven by the increase in the index of mineral fuels (+2.1%), animal & vegetable oils & fats (+1.3%) and machinery & transport equipment (+0.7%).



Exhibit 5: Main Contributors of Terms of Trade based Month-on-Month and Year-on-Year

For y-o-y comparison, Malaysia's **terms of trade** also increased by 5.6 per cent from 116.0 points in August of the previous year. The increment was driven by the increase in the index of mineral fuels (+10.5), food (+9.8%) and miscellaneous manufactured articles (+5.1%).

TIME-SERIES OF TERMS OF TRADE

Malaysia's **terms of trade** maintained a positive annual growth since November 2023. Meanwhile, the m-o-m performance of terms of trade returned to a positive growth trend in August 2025.

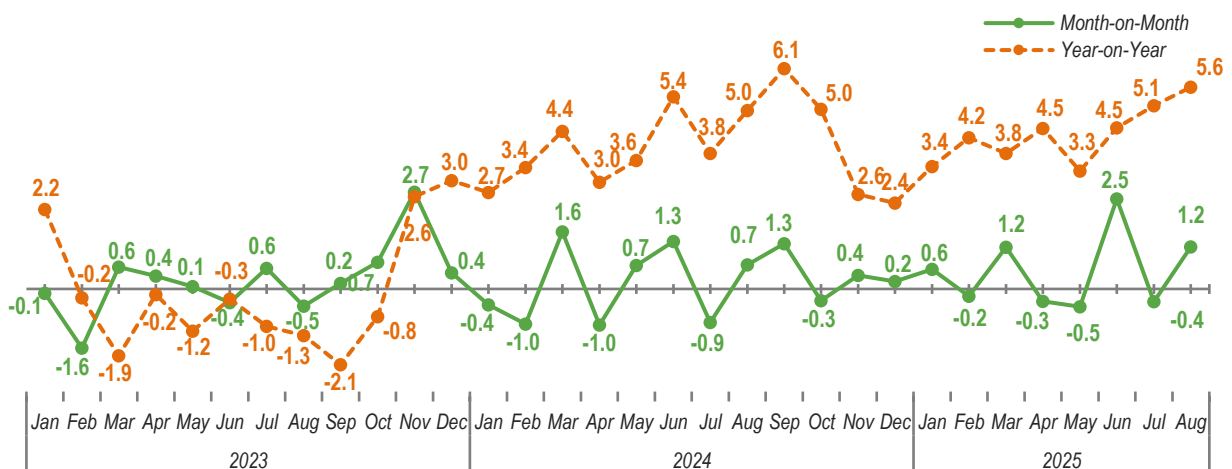


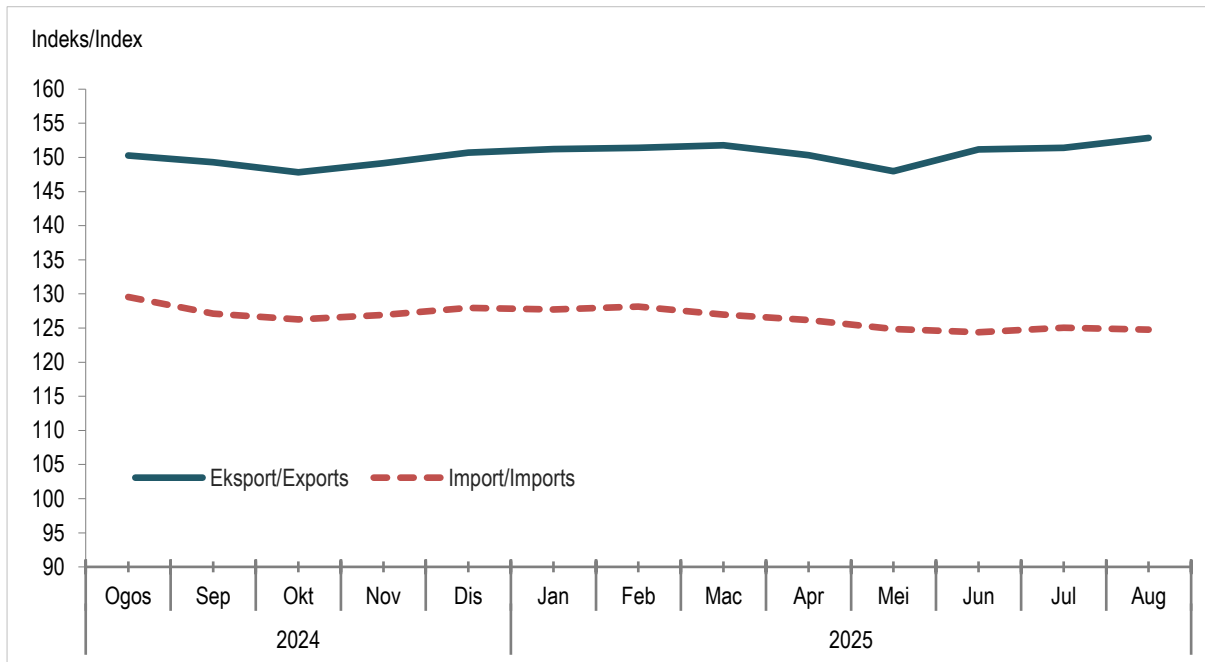
Chart 5: Terms of Trade, January 2023 – August 2025

2. CARTA & JADUAL STATISTIK

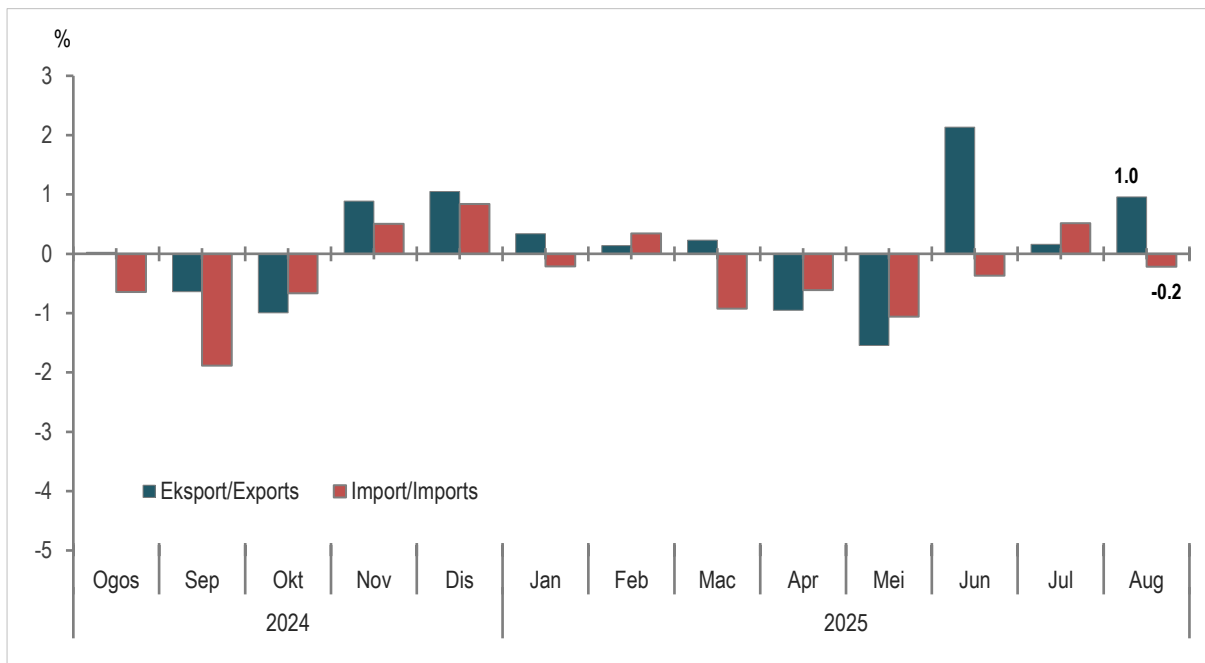
STATISTICAL TABLES & CHARTS



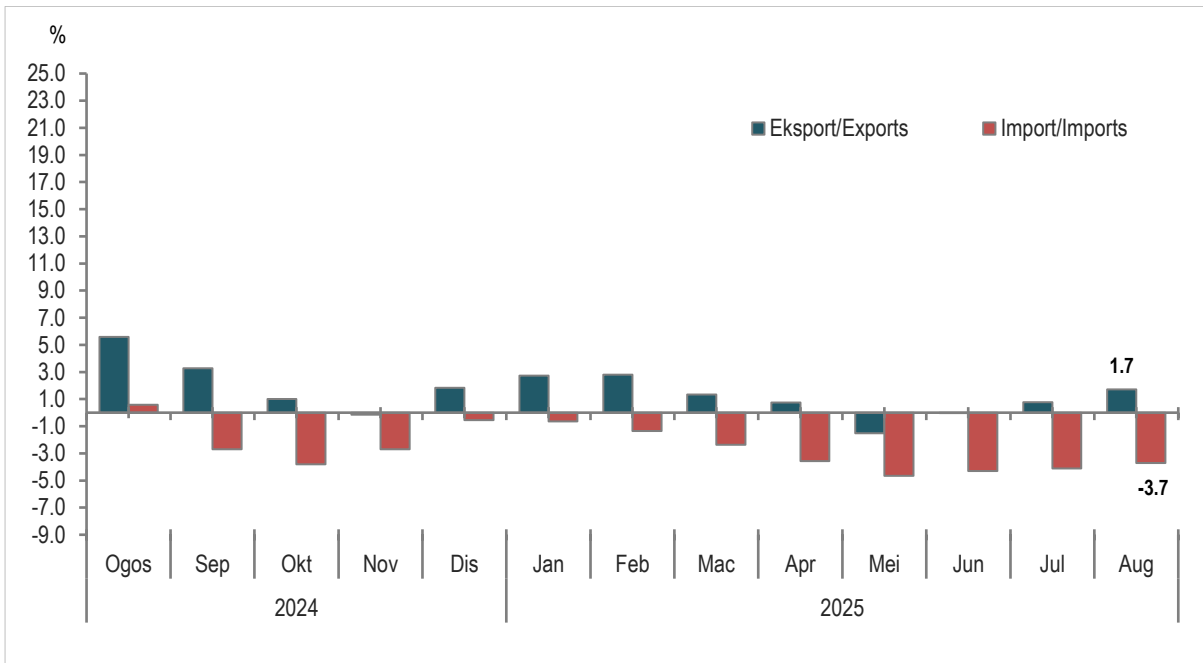
Carta 1.1: Indeks Nilai Seunit Eksport dan Import
 Chart 1.1: Export and Import Unit Value Index



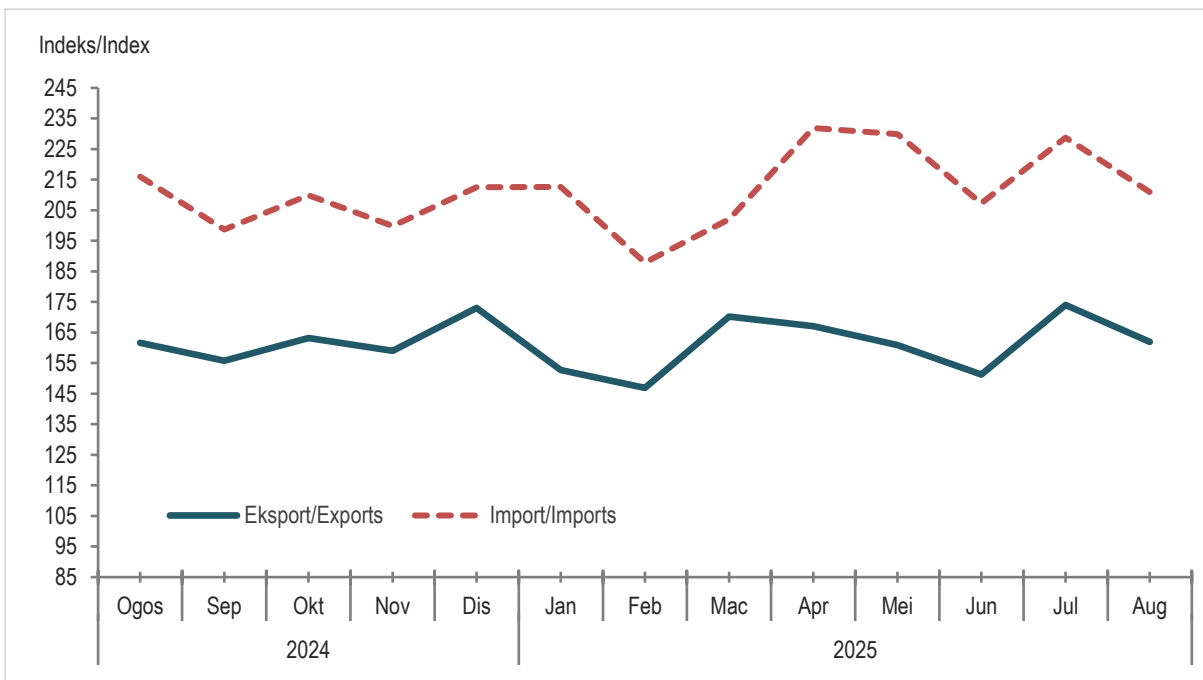
Carta 1.2: Peratus Perubahan Bulan ke Bulan Eksport dan Import Indeks Nilai seunit
 Chart 1.2: Month-on-Month Percentage Change in Export and Import Unit Value Index



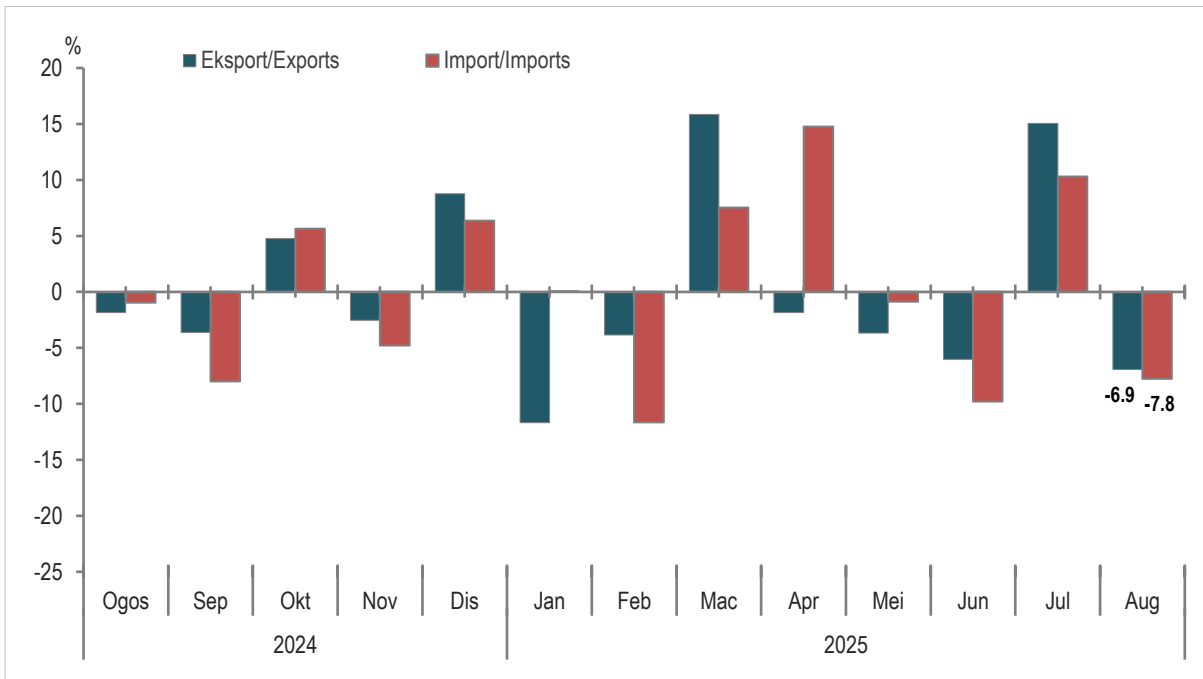
Carta 1.3: Peratus Perubahan Tahun Ke Tahun Indeks Nilai Seunit Eksport dan Import
 Chart 1.3: Year-on-Year Percentage Change in Export and Import Unit Value Index



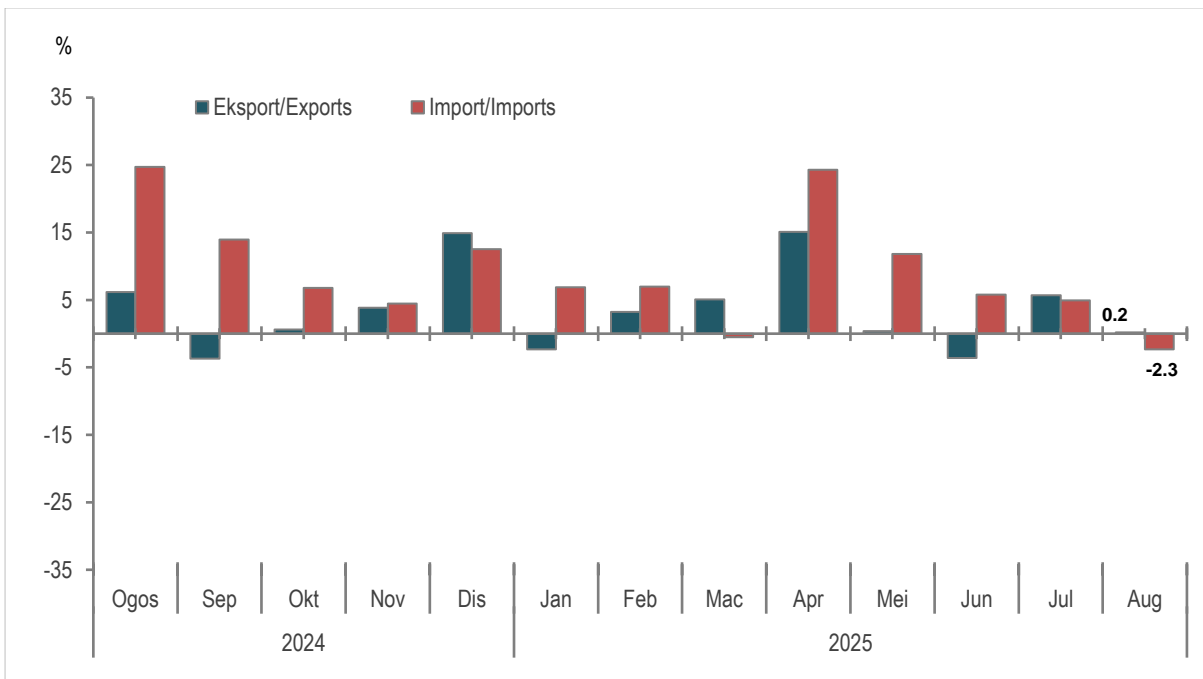
Carta 2.1: Indeks Volum Eksport dan Import
 Chart 2.1: Export and Import Volume Indices



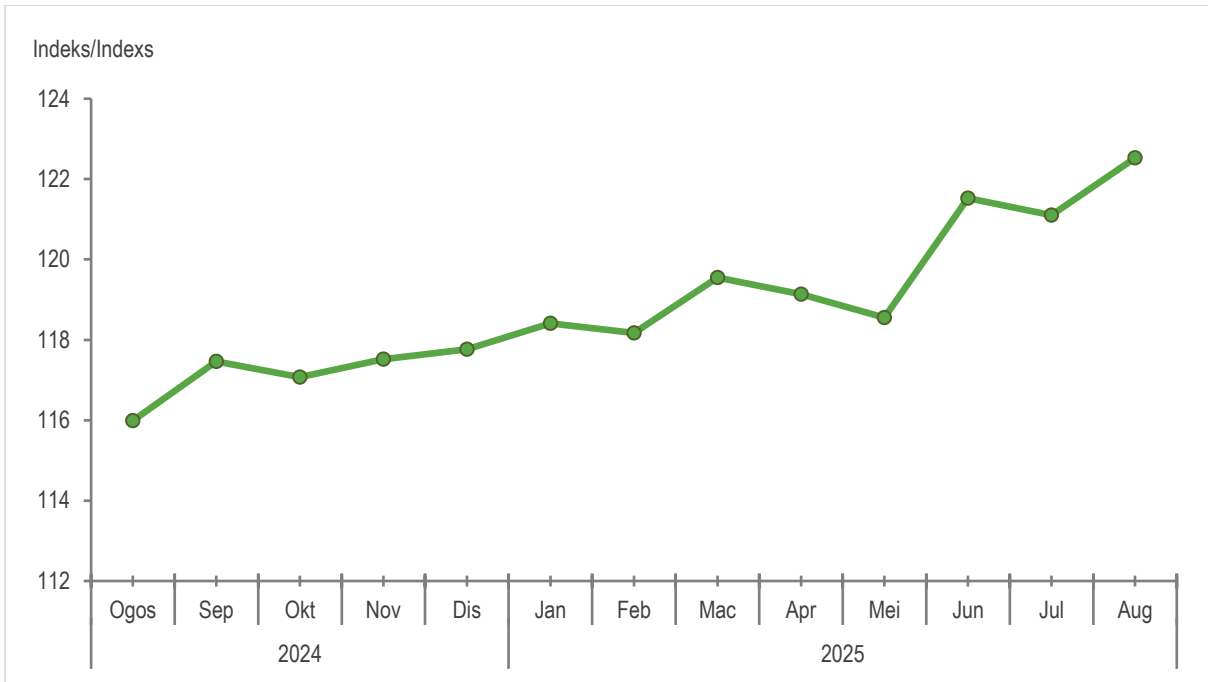
Carta 2.2: Peratus Perubahan Bulan ke Bulan Indeks Volum Eksport dan Import
 Chart 2.2: Month-on-Month Percentage Change Export and Import Volume Index



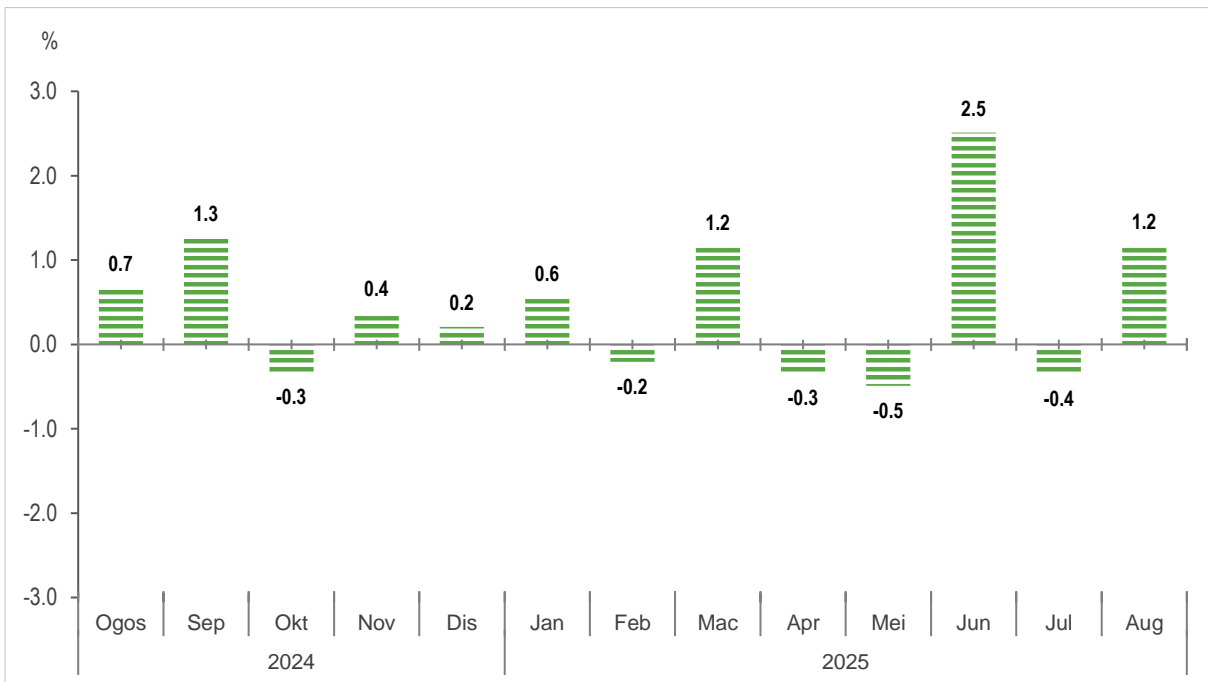
Carta 2.3: Peratus Perubahan Tahun ke Tahun Indeks Volum Eksport dan Import
 Chart 2.3: Year-on-Year Percentage Change in Export and Import Volume Index



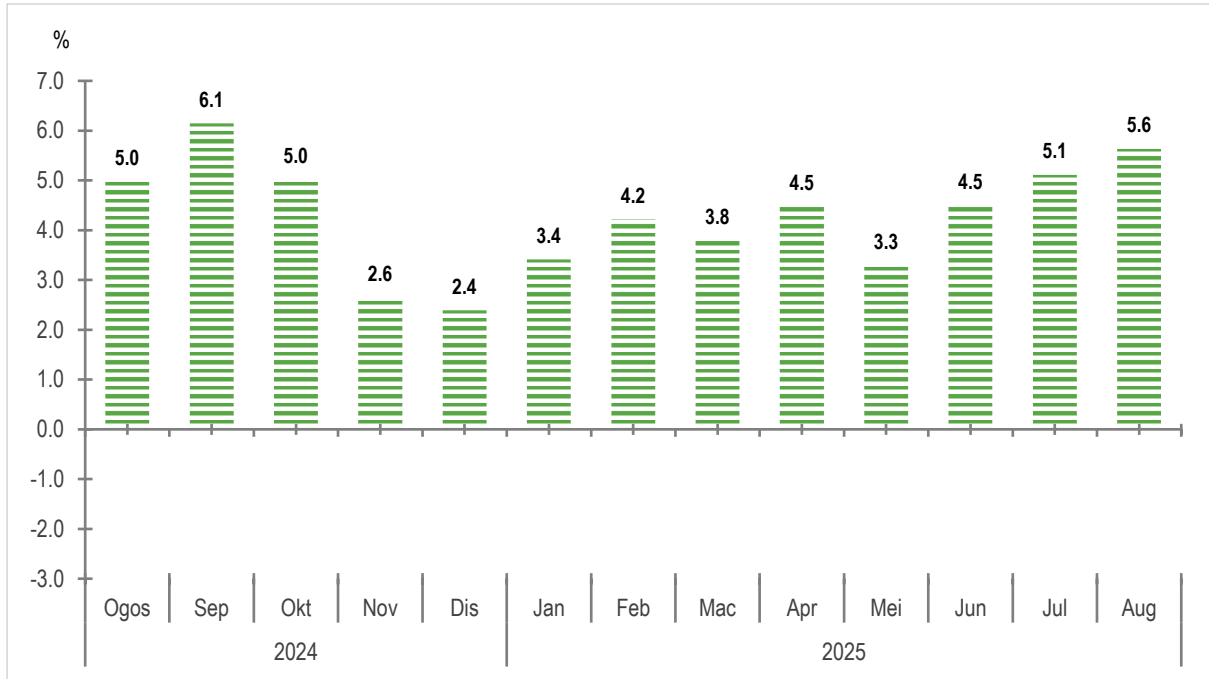
Carta 3.1: Indeks Terma Perdagangan
 Chart 3.1: Terms of Trade Index



Carta 3.2: Peratus Perubahan Bulan Ke Bulan Indeks Terma Perdagangan
 Chart 3.2: Month-on-Month Percentage Change in Terms of Trade Index



Carta 3.3: Peratus Perubahan Tahun ke Tahun Indeks Terma Perdagangan
Chart 3.3: Year-on-Year Percentage Change in Terms of Trade Index



MALAYSIA
JADUAL 1A : INDEKS NILAI SEUNIT EKSPORT (2010=100) MENGIKUT SEKSYEN BARANGAN (S.I.T.C.)
TABLE 1A : EXPORT UNIT VALUE INDICES (2010=100) BY COMMODITY SECTION (S.I.T.C.)

TEMPOH PERIOD	JUMLAH TOTAL	0 MAKANAN FOOD	1 MINUMAN DAN TEBAKAU BEVERAGES AND TOBACCO	2 BAHAN-BAHAN MENTAH TIDAK BOLEH DIMAKAN CRUDE MATERIALS, INEDIBLE	3 BAHAN API GALIAN, PELINCIR, DLL. MINERAL FUELS, LUBRICANTS, ETC.	4 MINYAK DAN LEMAK BINATANG DAN SAYUR-SAYURAN ANIMAL AND VEGETABLE OILS AND FATS	5 BAHAN KIMIA CHEMICALS	6 BARANG-BARANG KELUARAN KILANG MANUFACTURED GOODS	7 JENTERA & KELENGKAPAN PENGANGKUTAN MACHINERY & TRANSPORT EQUIPMENT	8 PELBAGAI BARANG KELUARAN KILANG MISCELLANEOUS MANUFACTURED ARTICLES	9 PELBAGAI URUS NIAGA DAN BARANGAN MISCELLANEOUS TRANSACTIONS AND COMMODITIES		
WAJARAN / WEIGHTS	100.0	3.5	0.6	2.7	16.1	6.0	7.8	9.7	42.3	10.9	0.4		
2010	100.0	100.0	100.0	100.0	100.0	100.0	100.0	100.0	100.0	100.0	100.0		
2011	111.3	110.7	100.8	125.1	130.1	127.8	112.7	107.9	102.0	106.0	117.7		
2012	112.4	112.6	101.5	108.5	141.7	113.8	110.8	98.9	105.1	107.7	147.8		
2013	110.5	114.0	102.1	94.7	140.0	96.3	109.8	96.1	105.7	109.8	149.0		
2014	111.7	117.1	103.7	84.7	142.1	101.9	116.3	96.7	105.7	111.7	151.8		
2015	107.1	122.9	108.7	82.0	99.9	93.2	126.7	100.1	109.1	116.5	147.6		
2016	104.9	129.7	115.7	79.9	75.2	100.4	133.7	99.7	109.7	120.4	172.4		
2017	112.5	138.6	124.5	91.2	96.1	113.8	149.0	104.5	111.0	124.3	193.5		
2018	114.4	143.1	132.7	84.9	111.9	97.1	154.8	106.0	110.1	126.2	197.7		
2019	115.3	146.7	142.7	84.4	112.1	87.7	153.7	103.0	112.8	129.0	187.6		
2020	112.4	151.6	147.7	83.8	84.1	107.5	154.5	101.9	114.0	129.9	172.3		
2021	123.9	157.3	152.9	89.9	112.9	159.2	164.2	107.0	116.1	132.2	191.8		
2022	145.2	164.0	159.6	92.5	180.6	188.8	176.8	111.9	128.1	133.6	342.2		
2023	143.7	174.2	166.3	93.1	164.7	133.0	177.8	111.6	137.6	135.0	547.6		
2024	149.4	192.5	177.3	98.6	177.5	130.0	181.4	110.6	140.2	139.6	919.6		
2023	OGOS	AUG	142.3	175.6	166.9	94.1	157.2	127.0	176.2	111.6	138.6	135.2	548.3
	SEP	SEP	144.6	176.4	167.3	93.4	162.8	130.2	178.1	111.4	140.0	136.6	614.9
	OKT	OCT	146.4	177.3	167.7	93.4	172.4	128.6	178.7	111.9	139.9	136.1	666.7
	NOV	NOV	149.3	178.2	167.9	94.4	191.3	126.7	178.7	111.4	139.3	136.0	668.3
	DIS	DEC	148.0	179.9	168.7	94.7	186.7	122.2	177.9	110.9	139.2	136.5	603.0
2024	JAN	JAN	147.2	181.8	169.4	95.2	181.5	123.9	178.6	110.7	139.0	137.5	572.0
	FEB	FEB	147.3	184.9	170.8	95.9	175.7	124.4	180.4	111.4	139.9	138.5	665.0
	MAC	MAR	149.8	186.4	171.4	96.6	184.0	128.8	181.3	111.4	140.7	139.1	719.2
	APR	APR	149.2	188.3	174.1	97.3	178.9	133.3	181.2	111.5	140.1	139.6	770.6
	MEI	MAY	150.3	190.1	176.3	98.7	181.6	133.4	182.1	111.2	140.5	140.0	843.3
	JUN	JUN	151.2	192.4	176.6	99.4	185.9	129.0	183.0	111.7	140.8	140.5	861.3
	JUL	JUL	150.2	193.8	176.8	100.4	179.2	126.2	183.4	112.0	140.7	139.8	984.3
	OGOS	AUG	150.3	194.9	179.0	99.9	181.4	126.6	182.6	110.5	140.5	139.7	963.3
	SEP	SEP	149.3	196.2	179.6	99.2	174.1	125.6	181.1	108.9	140.7	139.3	1153.2
	OKT	OCT	147.8	197.2	181.8	99.7	166.8	128.3	179.7	108.7	139.6	140.1	1166.5
	NOV	NOV	149.1	200.8	183.9	99.4	170.0	134.4	181.6	109.9	139.5	140.7	1145.5
	DIS	DEC	150.7	202.8	188.2	101.4	171.2	145.6	182.1	109.3	140.3	140.7	1191.0
2025	JAN	JAN	151.2	205.5	190.3	102.6	172.5	151.3	183.3	108.8	139.7	141.8	1138.9
	FEB	FEB	151.4	206.9	191.8	102.8	176.8	147.3	183.4	108.7	138.7	142.6	1141.9
	MAC	MAR	151.8	209.2	195.3	103.7	175.3	143.4	183.9	108.8	139.8	142.9	1221.2
	APR	APR	150.3	212.8	195.7	104.0	168.8	140.9	183.9	108.7	139.3	144.2	1173.7
	MEI	MAY	148.0	213.7	196.9	103.8	161.9	135.1	182.4	108.1	138.5	144.8	1068.3
	JUN	JUN	151.2	214.4	199.4	102.6	159.6	127.1	181.2	107.4	138.9	146.0	2375.7
	JUL	JUL	151.4	215.3	201.6	101.2	158.9	125.5	181.4	107.5	139.9	146.4	2377.2
	OGOS ^P	AUG ^P	152.9	216.2	204.7	100.9	160.3	128.5	181.7	107.4	140.8	147.2	2533.8

MALAYSIA
JADUAL 1B : PERATUS PERUBAHAN BULAN KE BULAN INDEKS NILAI SEUNIT BAGI EKSPORT (2010=100) MENGIKUT SEKSYEN BARANGAN (S.I.T.C.)
TABLE 1B : MONTH-ON-MONTH PERCENTAGE CHANGE EXPORT UNIT VALUE INDICES (2010=100) BY COMMODITY SECTIONS (S.I.T.C.)

TEMPOH PERIOD	JUMLAH TOTAL	0 MAKANAN FOOD	1 MINUMAN DAN TEBAKAU BEVERAGES AND TOBACCO	2 BAHAN-BAHAN MENTAH TIDAK BOLEH DIMAKAN CRUDE MATERIALS, INEDIBLE	3 BAHAN API GALIAN, PELINCIR, DLL. MINERAL FUELS, LUBRICANTS, ETC.	4 MINYAK DAN LEMAK BINATANG DAN SAYUR-SAYURAN ANIMAL AND VEGETABLE OILS AND FATS	5 BAHAN KIMIA CHEMICALS	6 BARANG-BARANG KELUARAN KILANG MANUFACTURED GOODS	7 JENTERA & KELENGKAPAN PENGANGKUTAN MACHINERY & TRANSPORT EQUIPMENT	8 PELBAGAI BARANG KELUARAN KILANG MISCELLANEOUS MANUFACTURED ARTICLES	9 PELBAGAI URUS NIAGA DAN BARANGAN MISCELLANEOUS TRANSACTIONS AND COMMODITIES		
WAJARAN / WEIGHTS	100.0	3.5	0.6	2.7	16.1	6.0	7.8	9.7	42.3	10.9	0.4		
2023	OGOS	<i>AUG</i>	0.5	0.3	0.1	-0.7	5.0	-0.4	-0.6	-0.6	-0.8	-1.2	10.3
	SEP	<i>SEP</i>	1.6	0.4	0.2	-0.8	3.6	2.6	1.1	-0.2	1.0	1.1	12.2
	OKT	<i>OCT</i>	1.2	0.6	0.3	0.0	5.9	-1.2	0.3	0.4	-0.1	-0.4	8.4
	NOV	<i>NOV</i>	2.0	0.5	0.1	1.1	11.0	-1.5	0.0	-0.4	-0.4	-0.1	0.2
	DIS	<i>DEC</i>	-0.9	1.0	0.5	0.3	-2.4	-3.6	-0.4	-0.5	-0.1	0.4	-9.8
2024	JAN	<i>JAN</i>	-0.5	1.0	0.4	0.5	-2.8	1.4	0.4	-0.2	-0.2	0.7	-5.2
	FEB	<i>FEB</i>	0.1	1.7	0.8	0.7	-3.2	0.4	1.0	0.7	0.7	0.7	16.3
	MAC	<i>MAR</i>	1.7	0.8	0.4	0.8	4.7	3.5	0.5	0.0	0.6	0.4	8.2
	APR	<i>APR</i>	-0.4	1.0	1.6	0.7	-2.8	3.5	-0.1	0.1	-0.5	0.4	7.1
	MEI	<i>MAY</i>	0.7	1.0	1.2	1.5	1.5	0.1	0.5	-0.2	0.3	0.3	9.4
	JUN	<i>JUN</i>	0.6	1.2	0.2	0.7	2.4	-3.4	0.5	0.4	0.2	0.3	2.1
	JUL	<i>JUL</i>	-0.6	0.7	0.1	1.1	-3.6	-2.1	0.2	0.3	0.0	-0.5	14.3
	OGOS	<i>AUG</i>	0.0	0.6	1.3	-0.6	1.2	0.2	-0.5	-1.4	-0.2	-0.1	-2.1
	SEP	<i>SEP</i>	-0.6	0.6	0.3	-0.7	-4.0	-0.7	-0.8	-1.4	0.1	-0.3	19.7
	OKT	<i>OCT</i>	-1.0	0.5	1.2	0.6	-4.2	2.2	-0.7	-0.3	-0.8	0.6	1.2
	NOV	<i>NOV</i>	0.9	1.8	1.1	-0.3	1.9	4.7	1.0	1.1	-0.1	0.4	-1.8
	DIS	<i>DEC</i>	1.1	1.0	2.3	1.9	0.7	8.3	0.3	-0.5	0.5	0.0	4.0
2025	JAN	<i>JAN</i>	0.3	1.4	1.1	1.3	0.7	4.0	0.7	-0.5	-0.4	0.8	-4.4
	FEB	<i>FEB</i>	0.1	0.7	0.8	0.1	2.5	-2.7	0.1	-0.1	-0.7	0.6	0.3
	MAC	<i>MAR</i>	0.2	1.1	1.8	0.9	-0.8	-2.6	0.3	0.1	0.8	0.2	6.9
	APR	<i>APR</i>	-0.9	1.7	0.2	0.3	-3.7	-1.8	0.0	-0.1	-0.3	0.9	-3.9
	MEI	<i>MAY</i>	-1.5	0.4	0.6	-0.2	-4.1	-4.1	-0.8	-0.5	-0.5	0.4	-9.0
	JUN	<i>JUN</i>	2.1	0.3	1.2	-1.1	-1.4	-5.9	-0.7	-0.7	0.2	0.8	122.4
	JUL	<i>JUL</i>	0.2	0.4	1.1	-1.4	-0.5	-1.3	0.1	0.0	0.8	0.3	0.1
	OGOS^p	<i>AUG^p</i>	1.0	0.4	1.6	-0.4	0.9	2.4	0.2	-0.05	0.6	0.6	6.6

MALAYSIA
JADUAL 1C : PERATURAN PERUBAHAN TAHUN KE TAHUN INDEKS NILAI SEUNIT BAGI EKSPORT (2010=100) MENGIKUT SEKSYEN BARANGAN (S.I.T.C.)
TABLE 1C : YEAR-ON-YEAR PERCENTAGE CHANGE EXPORT UNIT VALUE INDICES (2010=100) BY COMMODITY SECTION (S.I.T.C.)

TEMPOH PERIOD	JUMLAH TOTAL	0 MAKANAN FOOD	1 MINUMAN DAN TEBAKAU BEVERAGES AND TOBACCO	2 BAHAN-BAHAN MENTAH TIDAK BOLEH DIMAKAN CRUDE MATERIALS, INEDIBLE	3 BAHAN API GALIAN, PELINCIR, DLL. MINERAL FUELS, LUBRICANTS, ETC.	4 MINYAK DAN LEMAK BINATANG DAN SAYUR-SAYURAN ANIMAL AND VEGETABLE OILS AND FATS	5 BAHAN KIMIA CHEMICALS	6 BARANG-BARANG KELUARAN KILANG MANUFACTURED GOODS	7 JENTERA & KELENGKAPAN PENGANGKUTAN MACHINERY & TRANSPORT EQUIPMENT	8 PELBAGAI BARANG KELUARAN KILANG MISCELLANEOUS MANUFACTURED ARTICLES	9 PELBAGAI URUS NIAGA DAN BARANGAN MISCELLANEOUS TRANSACTIONS AND COMMODITIES
WAJARAN / WEIGHTS	100.0	3.5	0.6	2.7	16.1	6.0	7.8	9.7	42.3	10.9	0.4
2011	11.3	10.7	0.8	25.1	30.1	27.8	12.7	7.9	2.0	6.0	17.7
2012	1.0	1.7	0.7	-13.2	8.9	-11.0	-1.6	-8.3	3.0	1.6	25.6
2013	-1.7	1.3	0.6	-12.7	-1.2	-15.4	-0.9	-2.9	0.6	1.9	0.8
2014	1.2	2.7	1.6	-10.6	1.5	5.8	5.9	0.7	0.0	1.8	1.9
2015	-4.2	4.9	4.8	-3.1	-29.7	-8.5	8.9	3.5	3.2	4.3	-2.7
2016	-2.0	5.6	6.5	-2.6	-24.7	7.7	5.5	-0.5	0.6	3.3	16.7
2017	7.2	6.9	7.6	14.2	27.8	13.3	11.5	4.8	1.2	3.2	12.3
2018	1.6	3.2	6.6	-6.9	16.4	-14.6	3.9	1.4	-0.8	1.6	2.2
2019	0.8	2.5	7.5	-0.7	0.1	-9.7	-0.7	-2.8	2.5	2.2	-5.1
2020	-2.5	3.4	3.5	-0.6	-24.9	22.5	0.5	-1.1	1.1	0.7	-8.2
2021	10.2	3.8	3.5	7.2	34.2	48.1	6.3	5.1	1.8	1.8	11.4
2022	17.2	4.3	4.4	2.9	60.0	18.6	7.7	4.5	10.3	1.0	78.4
2023	-1.1	6.2	4.2	0.6	-8.8	-29.6	0.6	-0.3	7.5	1.0	60.0
2024	4.0	10.5	6.7	5.9	7.8	-2.3	2.0	-0.9	1.8	3.4	67.9
2023	OGOS	AUG	4.4	0.6	-18.9	-30.3	-1.0	-0.4	6.7	0.4	44.7
	SEP	SEP	3.3	-0.1	-21.2	-20.0	-0.1	-0.3	6.6	1.3	70.1
	OKT	OCT	3.4	0.5	-13.6	-16.5	0.0	-0.2	3.5	1.3	57.9
	NOV	NOV	3.0	3.1	-3.5	-11.8	-0.1	-0.8	3.1	1.0	67.6
	DIS	DEC	3.4	3.9	3.0	-13.3	0.1	-0.4	4.5	2.5	37.2
2024	JAN	JAN	3.4	4.3	6.3	-12.3	0.9	-0.9	3.8	3.5	53.6
	FEB	FEB	3.9	5.9	6.7	-9.5	2.1	0.3	5.0	4.4	52.1
	MAC	MAR	4.1	5.9	13.8	-9.2	1.6	0.0	4.1	4.0	23.3
	APR	APR	5.6	5.7	15.6	-5.7	1.6	0.4	2.3	4.1	42.7
	MEI	MAY	6.3	6.4	17.5	-3.7	2.1	-0.5	2.4	4.4	82.4
	JUN	JUN	6.3	5.8	24.0	-3.2	2.7	-0.5	1.4	4.1	49.2
	JUL	JUL	6.0	6.0	19.7	-1.0	3.5	-0.2	0.8	2.2	98.1
	OGOS	AUG	7.3	6.1	15.4	-0.3	3.6	-1.0	1.4	3.3	75.7
	SEP	SEP	7.4	6.2	6.9	-3.5	1.7	-2.2	0.5	1.9	87.5
	OKT	OCT	8.4	6.7	-3.2	-0.2	0.6	-2.9	-0.2	2.9	75.0
	NOV	NOV	9.5	5.3	-11.1	6.0	1.6	-1.4	0.2	3.4	71.4
	DIS	DEC	11.5	7.0	-8.3	19.1	2.4	-1.4	0.8	3.1	97.5
2025	JAN	JAN	12.3	7.8	-5.0	22.1	2.6	-1.7	0.5	3.1	99.1
	FEB	FEB	12.3	7.2	0.6	18.4	1.7	-2.5	-0.9	3.0	71.7
	MAC	MAR	14.0	7.3	-4.7	11.4	1.4	-2.3	-0.7	2.7	69.8
	APR	APR	12.4	6.9	-5.7	5.7	1.5	-2.5	-0.6	3.3	52.3
	MEI	MAY	11.7	5.2	-10.9	1.3	0.2	-2.7	-1.4	3.4	26.7
	JUN	JUN	12.9	3.3	-14.1	-1.4	-1.0	-3.8	-1.3	3.9	175.8
	JUL	JUL	14.0	0.8	-11.3	-0.6	-1.1	-4.1	-0.6	4.7	141.5
	OGOS ^p	AUG ^p	14.4	1.0	-11.6	1.6	-0.5	-2.8	0.2	5.4	163.0

8

MALAYSIA
JADUAL 2A : INDEKS VOLUM BAGI EKSPORT (2010=100) MENGIKUT SEKSYEN BARANGAN (S.I.T.C.)
TABLE 2A : EXPORT VOLUME INDICES (2010=100) BY COMMODITY SECTION (S.I.T.C.)

TEMPOH PERIOD	JUMLAH TOTAL	0 MAKANAN FOOD	1 MINUMAN DAN TEBAKAU BEVERAGES AND TOBACCO	2 BAHAN-BAHAN MENTAH TIDAK BOLEH DIMAKAN CRUDE MATERIALS, INEDIBLE	3 BAHAN API GALIAN, PELINCIR, DLL. MINERAL FUELS, LUBRICANTS, ETC.	4 MINYAK DAN LEMAK BINATANG DAN SAYUR-SAYURAN ANIMAL AND VEGETABLE OILS AND FATS	5 BAHAN KIMIA CHEMICALS	6 BARANG-BARANG KELUARAN KILANG MANUFACTURED GOODS	7 JENTERA & KELENGKAPAN PENGANGKUTAN MACHINERY & TRANSPORT EQUIPMENT	8 PELBAGAI BARANG KELUARAN KILANG MISCELLANEOUS MANUFACTURED ARTICLES	9 PELBAGAI URUS NIAGA DAN BARANGAN MISCELLANEOUS TRANSACTIONS AND COMMODITIES		
2010	100.0	100.0	100.0	100.0	100.0	100.0	100.0	100.0	100.0	100.0	100.0		
2011	98.1	102.1	110.4	104.6	95.4	106.2	101.1	107.4	94.3	99.4	97.5		
2012	97.9	101.2	130.4	99.6	99.7	103.9	102.5	114.0	90.5	103.9	114.8		
2013	102.0	106.7	135.0	107.7	112.1	94.0	116.1	125.0	92.3	99.9	90.3		
2014	107.4	120.5	139.7	106.1	116.9	92.1	119.9	124.3	100.1	107.4	87.5		
2015	114.2	122.4	150.2	135.4	126.0	95.5	117.9	132.8	106.6	117.4	75.7		
2016	117.2	128.1	150.6	147.2	143.4	93.0	118.9	124.6	110.2	120.4	84.4		
2017	130.2	126.4	126.4	163.8	145.8	91.8	124.2	141.1	128.7	137.1	133.4		
2018	137.4	101.8	95.5	157.1	137.8	89.5	134.9	155.1	142.5	144.6	107.0		
2019	135.2	103.9	86.0	167.6	125.8	98.7	136.1	165.1	137.1	150.5	96.3		
2020	137.2	99.3	62.4	154.3	130.7	94.6	119.4	154.0	138.9	181.3	52.2		
2021	156.7	109.6	58.0	168.2	134.8	90.7	160.9	210.8	160.2	216.9	58.8		
2022	167.0	121.2	61.3	176.7	141.5	100.4	175.0	219.9	187.0	198.3	57.8		
2023	155.6	118.8	66.3	166.6	140.9	104.3	147.0	202.8	168.4	173.4	52.5		
2024	158.4	126.0	60.5	162.6	120.5	117.8	152.6	221.1	175.3	199.0	37.8		
2023	OGOS	AUG	152.2	121.4	67.0	160.3	149.9	102.4	149.1	210.2	153.5	178.9	49.7
	SEP	SEP	161.8	124.1	66.5	150.4	128.3	109.8	148.0	197.2	185.7	183.7	47.1
	OKT	OCT	162.1	129.7	64.8	171.3	146.9	122.9	155.4	205.9	172.3	185.9	56.2
	NOV	NOV	153.2	133.6	70.2	180.6	136.3	115.6	152.2	212.6	159.5	176.7	51.2
	DIS	DEC	150.6	122.8	72.8	166.2	117.2	118.1	146.2	212.6	162.8	182.0	59.1
2024	JAN	JAN	156.4	119.1	74.9	159.3	152.0	118.1	150.2	233.0	156.9	180.4	54.0
	FEB	FEB	142.3	112.7	59.0	145.7	138.3	92.3	144.1	216.5	142.4	168.1	40.3
	MAC	MAR	162.0	125.9	66.6	191.4	130.7	101.4	152.0	235.4	177.2	202.5	41.4
	APR	APR	145.2	108.6	53.9	168.4	108.9	107.3	148.1	223.7	156.8	174.1	50.1
	MEI	MAY	160.3	128.5	60.6	171.0	116.7	117.1	158.7	244.8	174.1	208.5	42.0
	JUN	JUN	156.9	119.4	58.1	157.0	117.4	101.2	143.3	210.2	183.1	192.3	32.5
	JUL	JUL	164.7	133.0	56.9	174.6	119.8	141.2	159.8	229.0	180.0	214.3	37.2
	OGOS	AUG	161.6	141.6	61.8	167.0	110.8	121.9	163.9	226.0	177.0	229.0	28.6
	SEP	SEP	155.8	126.0	56.5	139.5	96.4	125.2	151.1	197.7	187.1	191.7	23.9
	OKT	OCT	163.2	140.2	55.3	153.5	115.4	131.7	156.1	209.0	184.9	206.1	40.3
	NOV	NOV	159.1	123.6	59.3	151.8	111.1	125.1	152.2	202.3	180.6	214.5	37.3
	DIS	DEC	173.0	133.0	63.2	172.2	127.8	130.7	152.3	225.9	203.5	206.4	26.3
2025	JAN	JAN	152.8	113.5	55.4	137.7	118.7	105.5	146.9	206.8	176.8	178.5	35.8
	FEB	FEB	146.9	119.1	53.2	145.3	104.4	100.2	145.7	201.6	168.5	188.2	36.0
	MAC	MAR	170.2	131.0	59.2	150.9	102.7	95.1	152.0	231.6	217.0	202.2	33.9
	APR	APR	167.0	121.1	51.0	146.5	109.4	104.3	144.4	213.8	211.0	190.1	38.3
	MEI	MAY	160.9	129.9	45.6	153.0	93.8	126.9	146.7	239.3	190.4	193.6	33.2
	JUN	JUN	151.3	116.7	47.9	137.9	95.3	125.4	131.6	192.9	190.6	183.3	15.9
	JUL	JUL	174.0	132.6	46.0	181.2	108.2	125.0	156.3	246.3	219.9	199.6	17.8
	OGOS ^p	AUG ^p	161.9	122.7	51.1	184.5	108.0	132.0	151.2	216.0	194.7	209.4	16.7

MALAYSIA
JADUAL 2B : PERATURAN PERUBAHAN BULAN KE BULAN INDEKS VOLUM BAGI EKSPORT (2010=100) MENGIKUT SEKSYEN BARANGAN (S.I.T.C.)
TABLE 2B : MONTH-ON-MONTH PERCENTAGE CHANGE EXPORT VOLUME INDICES (2010=100) BY COMMODITY SECTION (S.I.T.C.)

TEMPOH PERIOD	JUMLAH TOTAL	0 MAKANAN FOOD	1 MINUMAN DAN TEBPAKAU BEVERAGES AND TOBACCO	2 BAHAN-BAHAN MENTAH TIDAK BOLEH DIMAKAN CRUDE MATERIALS, INEDIBLE	3 BAHAN API GALIAN, PELINCIR, DLL. MINERAL FUELS, LUBRICANTS, ETC.	4 MINYAK DAN LEMAK BINATANG DAN SAYUR-SAYURAN ANIMAL AND VEGETABLE OILS AND FATS	5 BAHAN KIMIA CHEMICALS	6 BARANG-BARANG KELUARAN KILANG MANUFACTURED GOODS	7 JENTERA & KELENGKAPAN PENGANGKUTAN MACHINERY & TRANSPORT EQUIPMENT	8 PELBAGAI BARANG KELUARAN KILANG MISCELLANEOUS MANUFACTURED ARTICLES	9 PELBAGAI URUS NIAGA DAN BARANGAN MISCELLANEOUS TRANSACTIONS AND COMMODITIES		
2023	OGOS	<i>AUG</i>	-1.8	3.4	6.2	-12.0	21.8	0.4	3.6	3.1	-10.9	1.3	32.8
	SEP	<i>SEP</i>	6.3	2.2	-0.8	-6.2	-14.4	7.3	-0.7	-6.2	21.0	2.7	-5.4
	OKT	<i>OCT</i>	0.2	4.5	-2.5	13.9	14.4	11.9	5.0	4.4	-7.2	1.2	19.5
	NOV	<i>NOV</i>	-5.5	3.0	8.4	5.4	-7.2	-5.9	-2.0	3.3	-7.4	-5.0	-8.9
	DIS	<i>DEC</i>	-1.7	-8.1	3.6	-8.0	-14.1	2.1	-4.0	0.0	2.1	3.0	15.4
2024	JAN	<i>JAN</i>	3.9	-3.1	2.9	-4.2	29.8	0.0	2.7	9.6	-3.7	-0.9	-8.7
	FEB	<i>FEB</i>	-9.0	-5.3	-21.2	-8.5	-9.1	-21.8	-4.1	-7.1	-9.2	-6.8	-25.3
	MAC	<i>MAR</i>	13.8	11.7	12.9	31.4	-5.5	9.8	5.5	8.7	24.4	20.5	2.7
	APR	<i>APR</i>	-10.4	-13.8	-19.0	-12.0	-16.7	5.9	-2.5	-5.0	-11.5	-14.0	20.9
	MEI	<i>MAY</i>	10.4	18.3	12.3	1.5	7.2	9.1	7.1	9.4	11.1	19.7	-16.2
	JUN	<i>JUN</i>	-2.1	-7.1	-4.1	-8.2	0.6	-13.6	-9.7	-14.1	5.1	-7.7	-22.5
	JUL	<i>JUL</i>	5.0	11.4	-2.1	11.2	2.0	39.5	11.5	9.0	-1.7	11.4	14.3
	OGOS	<i>AUG</i>	-1.9	6.5	8.6	-4.3	-7.5	-13.7	2.6	-1.3	-1.7	6.9	-23.1
	SEP	<i>SEP</i>	-3.6	-11.1	-8.7	-16.5	-13.0	2.7	-7.8	-12.5	5.7	-16.3	-16.2
	OKT	<i>OCT</i>	4.8	11.3	-2.1	10.1	19.7	5.2	3.3	5.7	-1.2	7.5	68.6
	NOV	<i>NOV</i>	-2.5	-11.9	7.2	-1.1	-3.7	-5.0	-2.5	-3.2	-2.3	4.1	-7.5
	DIS	<i>DEC</i>	8.8	7.6	6.6	13.4	15.0	4.5	0.1	11.6	12.7	-3.8	-29.6
2025	JAN	<i>JAN</i>	-11.6	-14.6	-12.4	-20.0	-6.5	-19.3	-3.6	-8.4	-13.1	-13.5	36.4
	FEB	<i>FEB</i>	-3.9	4.9	-3.9	5.5	-12.1	-5.0	-0.8	-2.5	-4.7	5.4	0.5
	MAC	<i>MAR</i>	15.9	10.0	11.1	3.8	-1.6	-5.1	4.3	14.9	28.8	7.4	-5.9
	APR	<i>APR</i>	-1.8	-7.6	-13.8	-2.9	6.5	9.6	-5.0	-7.7	-2.8	-6.0	13.1
	MEI	<i>MAY</i>	-3.7	7.2	-10.6	4.4	-14.3	21.7	1.6	11.9	-9.8	1.8	-13.4
	JUN	<i>JUN</i>	-6.0	-10.2	5.0	-9.8	1.7	-1.2	-10.3	-19.4	0.1	-5.3	-52.1
	JUL	<i>JUL</i>	15.0	13.6	-3.9	31.3	13.5	-0.4	18.7	27.7	15.4	8.9	11.9
	OGOS^P	<i>AUG^P</i>	-6.9	-7.4	11.1	1.9	-0.2	5.6	-3.2	-12.3	-11.5	4.9	-5.9

MALAYSIA
JADUAL 2C : PERATURAN PERUBAHAN TAHUN KE TAHUN INDEKS VOLUM BAGI EKSPORT (2010=100) MENGIKUT SEKSYEN BARANGAN (S.I.T.C.)
TABLE 2C : YEAR-ON-YEAR PERCENTAGE CHANGE EXPORT VOLUME INDICES (2010=100) BY COMMODITY SECTION (S.I.T.C.)

TEMPOH PERIOD	JUMLAH TOTAL	0 MAKANAN FOOD	1 MINUMAN DAN TEBBAKAU BEVERAGES AND TOBACCO	2 BAHAN-BAHAN MENTAH TIDAK BOLEH DIMAKAN CRUDE MATERIALS, INEDIBLE	3 BAHAN API GALIAN, PELINCIR, DLL. MINERAL FUELS, LUBRICANTS, ETC.	4 MINYAK DAN LEMAK BINATANG DAN SAYUR-SAYURAN ANIMAL AND VEGETABLE OILS AND FATS	5 BAHAN KIMIA CHEMICALS	6 BARANG-BARANG KELUARAN KILANG MANUFACTURED GOODS	7 JENTERA & KELENGKAPAN PENGANGKUTAN MACHINERY & TRANSPORT EQUIPMENT	8 PELBAGAI BARANG KELUARAN KILANG MISCELLANEOUS MANUFACTURED ARTICLES	9 PELBAGAI URUS NIAGA DAN BARANGAN MISCELLANEOUS TRANSACTIONS AND COMMODITIES		
2011	-1.9	2.1	10.4	4.6	-4.6	6.2	1.1	7.4	-5.7	-0.6	-2.5		
2012	-0.2	-0.9	18.2	-4.7	4.5	-2.2	1.3	6.1	-4.0	4.5	17.8		
2013	4.2	5.5	3.5	8.1	12.5	-9.5	13.3	9.6	2.0	-3.9	-21.3		
2014	5.3	13.0	3.5	-1.5	4.3	-2.0	3.3	-0.5	8.5	7.5	-3.1		
2015	6.3	1.6	7.5	27.6	7.8	3.7	-1.6	6.8	6.4	9.3	-13.5		
2016	2.6	4.6	0.3	8.7	13.8	-2.6	0.8	-6.2	3.4	2.5	11.6		
2017	11.1	-1.3	-16.1	11.3	1.7	-1.3	4.5	13.2	16.8	13.9	58.0		
2018	5.5	-19.5	-24.5	-4.1	-5.4	-2.6	8.6	10.0	10.8	5.4	-19.8		
2019	-1.6	2.1	-9.9	6.6	-8.8	10.4	0.9	6.4	-3.8	4.1	-10.0		
2020	1.5	-4.4	-27.5	-7.9	3.9	-4.2	-12.3	-6.7	1.3	20.5	-45.8		
2021	14.2	10.4	-7.0	9.0	3.2	-4.1	34.7	36.9	15.3	19.6	12.8		
2022	6.6	10.5	5.6	5.0	5.0	10.7	8.8	4.3	16.8	-8.6	-1.8		
2023	-6.8	-2.0	8.3	-5.7	-0.5	3.9	-16.0	-7.8	-10.0	-12.6	-9.2		
2024	1.8	6.0	-8.8	-2.4	-14.5	12.9	3.9	9.0	4.1	14.8	-27.9		
2023	OGOS	AUG	-15.2	-5.3	1.7	-13.9	-18.0	-1.4	-13.4	-4.2	-20.2	-18.1	-4.7
	SEP	SEP	-10.7	1.4	13.7	-14.2	-17.4	-7.2	-16.0	-8.1	-11.5	-14.7	-1.5
	OKT	OCT	-2.2	5.2	3.0	14.2	-12.7	23.0	-6.3	2.3	-4.2	5.0	12.0
	NOV	NOV	-6.6	4.1	-9.2	7.5	6.1	4.7	-10.9	9.1	-15.6	-7.6	-13.7
	DIS	DEC	-12.1	-4.4	-3.9	-3.7	-9.8	-19.9	-12.1	2.4	-15.8	-9.0	8.5
2024	JAN	JAN	5.3	21.8	20.8	-3.4	5.5	34.0	6.4	40.4	-6.1	17.8	-13.9
	FEB	FEB	-5.2	0.5	2.4	-10.3	-6.7	1.1	-4.3	12.1	-11.0	5.8	-6.4
	MAC	MAR	-5.4	-0.6	-17.8	2.5	-16.6	-16.0	-7.0	7.5	-3.2	3.4	-31.7
	APR	APR	4.1	7.1	-9.2	27.2	-15.6	16.6	18.5	14.5	2.3	25.5	2.3
	MEI	MAY	1.1	6.3	-13.0	3.0	-30.2	26.2	4.4	23.4	5.3	20.6	-28.8
	JUN	JUN	-4.6	1.4	-6.3	-10.6	-18.0	5.2	4.9	-4.2	-1.7	8.4	-40.3
	JUL	JUL	6.2	13.3	-9.8	-4.1	-2.6	38.4	11.1	12.3	4.5	21.3	-0.8
	OGOS	AUG	6.1	16.7	-7.7	4.2	-26.1	19.0	10.0	7.5	15.3	28.0	-42.6
	SEP	SEP	-3.7	1.5	-15.0	-7.3	-24.9	14.0	2.1	0.2	0.7	4.3	-49.2
	OKT	OCT	0.6	8.2	-14.6	-10.4	-21.4	7.2	0.4	1.5	7.3	10.8	-28.3
	NOV	NOV	3.8	-7.5	-15.6	-15.9	-18.5	8.2	0.0	-4.8	13.2	21.4	-27.2
	DIS	DEC	14.9	8.3	-13.1	3.6	9.1	10.7	4.2	6.2	25.0	13.4	-55.6
2025	JAN	JAN	-2.3	-4.6	-26.0	-13.5	-22.0	-9.9	-2.8	-11.3	12.7	-1.1	-33.7
	FEB	FEB	3.3	5.7	-9.7	-0.3	-24.2	9.8	0.4	-6.9	18.3	12.0	-10.8
	MAC	MAR	5.4	4.0	-11.1	-21.2	-20.5	-6.1	0.0	-1.6	22.5	1.0	-18.2
	APR	APR	15.5	11.5	-5.5	-13.0	1.0	-2.8	-2.5	-4.5	35.5	9.3	-23.5
	MEI	MAY	0.4	1.1	-24.8	-10.6	-19.7	8.4	-7.5	-2.2	9.3	-7.1	-21.0
	JUN	JUN	-3.6	-2.3	-17.6	-12.1	-18.8	24.0	-8.2	-8.2	4.1	-4.7	-51.2
	JUL	JUL	5.7	-0.3	-19.2	3.8	-9.7	-11.5	-2.2	7.6	22.2	-6.8	-52.2
	OGOS ^P	AUG ^P	0.2	-13.3	-17.3	10.5	-2.5	8.3	-7.8	-4.5	10.0	-8.6	-41.5

MALAYSIA
JADUAL 3A : INDEKS NILAI SEUNIT BAGI IMPORT (2010=100) MENGIKUT SEKSYEN BARANGAN (S.I.T.C.)
TABLE 3A : IMPORT UNIT VALUE INDICES (2010=100) BY COMMODITY SECTION (S.I.T.C.)

TEMPOH PERIOD	JUMLAH TOTAL	0 MAKANAN FOOD	1 MINUMAN DAN TEBAKAU BEVERAGES AND TOBACCO	2 BAHAN-BAHAN MENTAH TIDAK BOLEH DIMAKAN CRUDE MATERIALS, INEDIBLE	3 BAHAN API GALIAN, PELINCIR, DLL. MINERAL FUELS, LUBRICANTS, ETC.	4 MINYAK DAN LEMAK BINATANG DAN SAYUR-SAYURAN ANIMAL AND VEGETABLE OILS AND FATS	5 BAHAN KIMIA CHEMICALS	6 BARANG-BARANG KELUARAN KILANG MANUFACTURED GOODS	7 JENTERA & KELENGKAPAN PENGANGKUTAN MACHINERY & TRANSPORT EQUIPMENT	8 PELBAGAI BARANG KELUARAN KILANG MISCELLANEOUS MANUFACTURED ARTICLES	9 PELBAGAI URUS NIAGA DAN BARANGAN MISCELLANEOUS TRANSACTIONS AND COMMODITIES		
WAJARAN / WEIGHTS	100.0	6.8	0.6	3.3	12.9	1.1	10.5	13.4	41.8	7.6	2.0		
2010	100.0	100.0	100.0	100.0	100.0	100.0	100.0	100.0	100.0	100.0	100.0		
2011	105.5	106.7	101.5	105.4	125.6	135.4	101.8	102.1	101.8	101.5	125.7		
2012	106.9	109.1	100.9	102.0	130.8	110.7	102.2	102.0	103.7	102.6	138.5		
2013	107.2	111.8	102.4	100.3	128.7	88.9	100.8	102.1	105.5	104.0	131.0		
2014	108.3	116.0	103.3	99.4	127.0	103.7	101.1	102.0	107.3	105.1	121.0		
2015	107.4	119.8	103.5	100.9	93.5	97.6	103.0	102.4	111.0	106.5	136.1		
2016	108.9	120.9	105.5	97.6	75.2	116.0	103.1	100.9	116.6	110.7	159.2		
2017	115.5	131.7	109.3	114.0	99.6	145.8	107.3	106.0	119.0	113.2	166.7		
2018	117.8	135.1	112.1	107.1	121.3	125.5	110.0	107.9	118.1	112.1	156.3		
2019	117.4	138.4	115.1	106.7	109.0	110.4	110.4	108.3	120.1	112.6	172.2		
2020	113.9	141.6	117.0	107.2	79.6	127.1	109.7	107.9	119.0	112.5	212.7		
2021	118.4	144.9	118.9	118.7	100.2	188.7	112.5	112.9	117.5	112.7	218.3		
2022	130.2	148.9	120.2	120.2	156.5	272.8	113.1	115.0	123.2	115.5	228.9		
2023	129.0	153.3	121.7	117.5	145.5	258.1	110.2	113.7	124.5	117.6	237.2		
2024	129.0	155.1	123.1	115.9	145.3	278.6	107.4	112.5	124.4	119.1	278.6		
2023	OGOS	AUG	128.8	154.1	123.3	116.9	146.5	274.8	109.5	113.6	123.3	117.6	235.5
	SEP	SEP	130.6	154.4	123.4	117.0	155.0	281.6	109.8	113.5	124.8	118.0	230.2
	OKT	OCT	131.3	154.6	123.5	117.2	158.1	276.8	110.2	113.5	125.3	118.4	228.2
	NOV	NOV	130.4	154.8	123.7	117.1	153.5	268.1	110.0	113.4	126.0	118.4	237.4
	DIS	DEC	128.7	155.0	123.5	116.6	146.6	261.3	109.4	113.2	124.2	118.4	240.2
2024	JAN	JAN	128.5	155.0	123.4	116.2	142.7	268.4	109.4	113.0	124.6	118.5	254.8
	FEB	FEB	129.9	155.1	122.8	116.5	145.6	271.8	109.1	113.1	126.6	118.8	260.0
	MAC	MAR	130.0	155.2	122.8	116.3	147.9	273.7	108.8	113.2	125.9	118.8	266.6
	APR	APR	130.9	155.2	121.9	116.4	149.5	277.5	108.5	113.2	126.8	119.4	279.5
	MEI	MAY	130.9	155.3	122.4	116.7	154.5	283.9	108.3	113.2	125.2	119.4	280.6
	JUN	JUN	130.0	155.4	122.8	116.7	150.1	266.8	107.8	113.0	125.5	119.3	266.7
	JUL	JUL	130.4	155.5	123.3	116.7	157.8	265.9	107.6	112.8	124.0	119.2	269.6
	OGOS	AUG	129.5	155.5	123.8	116.0	152.7	274.8	107.1	112.4	123.5	119.0	274.6
	SEP	SEP	127.1	154.6	123.8	115.3	137.8	275.7	106.1	111.8	122.9	118.7	282.5
	OKT	OCT	126.3	153.7	123.4	114.5	131.5	278.9	105.5	111.4	122.7	118.9	296.2
	NOV	NOV	126.9	154.8	123.2	114.9	133.8	298.4	105.4	111.4	122.5	119.3	302.7
	DIS	DEC	128.0	156.0	123.5	114.8	139.3	307.0	105.4	111.5	122.7	119.4	309.1
2025	JAN	JAN	127.7	156.1	121.8	115.0	138.8	303.8	104.9	111.5	122.2	119.3	315.3
	FEB	FEB	128.1	156.3	121.6	114.7	141.6	301.7	104.3	111.5	121.9	119.7	332.7
	MAC	MAR	127.0	156.4	121.8	114.6	137.7	294.3	103.9	111.2	121.3	119.4	316.4
	APR	APR	126.2	156.8	121.7	114.5	128.8	297.5	103.7	111.0	121.5	119.6	336.3
	MEI	MAY	124.8	156.9	122.7	113.9	120.4	288.9	103.3	110.6	121.3	119.3	340.5
	JUN	JUN	124.4	156.9	121.7	113.0	119.2	291.2	102.7	110.3	121.1	119.3	336.0
	JUL	JUL	125.0	157.0	122.3	112.2	123.6	288.8	102.6	110.1	120.7	119.2	355.9
	OGOS ^P	AUG ^P	124.8	157.0	121.8	111.6	122.1	292.2	102.2	109.8	120.6	119.4	356.4

MALAYSIA
JADUAL 3B : PERATURAN PERUBAHAN BULAN KE BULAN INDEKS NILAI SEUNIT BAGI IMPORT (2010=100) MENGIKUT SEKSYEN BARANGAN (S.I.T.C.)
TABLE 3B : MONTH-ON-MONTH PERCENTAGE CHANGE IMPORT UNIT VALUE INDICES (2010=100) BY COMMODITY SECTION (S.I.T.C.)

TEMPOH PERIOD	JUMLAH TOTAL	0 MAKANAN FOOD	1 MINUMAN DAN TEBAKAU BEVERAGES AND TOBACCO	2 BAHAN-BAHAN MENTAH TIDAK BOLEH DIMAKAN CRUDE MATERIALS, INEDIBLE	3 BAHAN API GALIAN, PELINCIR, DLL. MINERAL FUELS, LUBRICANTS, ETC.	4 MINYAK DAN LEMAK BINATANG DAN SAYUR-SAYURAN ANIMAL AND VEGETABLE OILS AND FATS	5 BAHAN KIMIA CHEMICALS	6 BARANG-BARANG KELUARAN KILANG MANUFACTURED GOODS	7 JENTERA & KELENGKAPAN PENGANGKUTAN MACHINERY & TRANSPORT EQUIPMENT	8 PELBAGAI BARANG KELUARAN KILANG MISCELLANEOUS MANUFACTURED ARTICLES	9 PELBAGAI URUS NIAGA DAN BARANGAN MISCELLANEOUS TRANSACTIONS AND COMMODITIES	
WAJARAN / WEIGHTS	100.0	6.8	0.6	3.3	12.9	1.1	10.5	13.4	41.8	7.6	2.0	
2023												
OGOS	AUG	1.0	0.3	0.3	-0.6	7.0	9.6	-0.5	-0.3	-0.1	-0.3	-2.9
SEP	SEP	1.4	0.2	0.1	0.1	5.8	2.4	0.3	-0.1	1.3	0.3	-2.3
OKT	OCT	0.5	0.1	0.1	0.2	2.0	-1.7	0.4	0.0	0.4	0.4	-0.9
NOV	NOV	-0.6	0.1	0.1	-0.1	-2.9	-3.1	-0.2	-0.1	0.5	0.0	4.1
DIS	DEC	-1.4	0.1	-0.1	-0.5	-4.5	-2.5	-0.5	-0.2	-1.4	-0.1	1.2
2024												
JAN	JAN	-0.1	0.0	-0.1	-0.3	-2.6	2.7	0.0	-0.2	0.3	0.1	6.1
FEB	FEB	1.1	0.1	-0.5	0.3	2.0	1.3	-0.3	0.1	1.7	0.3	2.1
MAC	MAR	0.1	0.1	0.0	-0.2	1.6	0.7	-0.2	0.1	-0.6	0.0	2.5
APR	APR	0.6	0.0	-0.7	0.1	1.1	1.4	-0.2	0.0	0.7	0.5	4.8
MEI	MAY	0.1	0.1	0.4	0.3	3.3	2.3	-0.3	0.0	-1.3	0.0	0.4
JUN	JUN	-0.7	0.1	0.4	0.1	-2.8	-6.0	-0.5	-0.1	0.2	-0.1	-4.9
JUL	JUL	0.3	0.1	0.4	-0.1	5.1	-0.3	-0.2	-0.2	-1.2	-0.1	1.1
OGOS	AUG	-0.6	0.0	0.4	-0.6	-3.2	3.3	-0.4	-0.4	-0.4	-0.1	1.9
SEP	SEP	-1.9	-0.5	0.0	-0.6	-9.8	0.3	-1.0	-0.5	-0.5	-0.3	2.9
OKT	OCT	-0.7	-0.6	-0.3	-0.7	-4.5	1.2	-0.5	-0.4	-0.1	0.1	4.9
NOV	NOV	0.5	0.7	-0.2	0.4	1.7	7.0	-0.2	0.0	-0.1	0.4	2.2
DIS	DEC	0.8	0.7	0.3	-0.1	4.1	2.8	0.0	0.1	0.1	0.1	2.1
2025												
JAN	JAN	-0.2	0.1	-1.4	0.1	-0.3	-1.0	-0.5	0.0	-0.4	-0.2	2.0
FEB	FEB	0.3	0.1	-0.2	-0.3	2.0	-0.7	-0.6	0.0	-0.3	0.4	5.5
MAC	MAR	-0.9	0.1	0.1	-0.1	-2.7	-2.5	-0.4	-0.2	-0.5	-0.2	-4.9
APR	APR	-0.6	0.2	-0.1	-0.1	-6.5	1.1	-0.1	-0.2	0.2	0.1	6.3
MEI	MAY	-1.1	0.1	0.8	-0.5	-6.5	-2.9	-0.4	-0.3	-0.1	-0.2	1.3
JUN	JUN	-0.4	0.0	-0.8	-0.8	-1.1	0.8	-0.5	-0.3	-0.2	0.0	-1.3
JUL	JUL	0.5	0.0	0.5	-0.7	3.7	-0.8	-0.2	-0.1	-0.3	-0.1	5.9
OGOS ^p	AUG ^p	-0.2	0.01	-0.4	-0.5	-1.2	1.2	-0.4	-0.3	-0.04	0.1	0.1

MALAYSIA
JADUAL 3C : PERATURAN PERUBAHAN TAHUN KE TAHUN INDEKS NILAI SEUNIT BAGI IMPORT (2010=100) MENGIKUT SEKSYEN BARANGAN (S.I.T.C.)
TABLE 3C : YEAR-ON-YEAR PERCENTAGE CHANGE IMPORT UNIT VALUE INDICES (2010=100) BY COMMODITY SECTION (S.I.T.C.)

TEMPOH PERIOD	JUMLAH TOTAL	0 MAKANAN FOOD	1 MINUMAN DAN TEBAKAU BEVERAGES AND TOBACCO	2 BAHAN-BAHAN MENTAH TIDAK BOLEH DIMAKAN CRUDE MATERIALS, INEDIBLE	3 BAHAN API GALIAN, PELINCIR, DLL. MINERAL FUELS, LUBRICANTS, ETC.	4 MINYAK DAN LEMAK BINATANG DAN SAYUR-SAYURAN ANIMAL AND VEGETABLE OILS AND FATS	5 BAHAN KIMIA CHEMICALS	6 BARANG-BARANG KELUARAN KILANG MANUFACTURED GOODS	7 JENTERA & KELENGKAPAN PENGANGKUTAN MACHINERY & TRANSPORT EQUIPMENT	8 PELBAGAI BARANG KELUARAN KILANG MISCELLANEOUS MANUFACTURED ARTICLES	9 PELBAGAI URUS NIAGA DAN BARANGAN MISCELLANEOUS TRANSACTIONS AND COMMODITIES
WAJARAN / WEIGHTS	100.0	6.8	0.6	3.3	12.9	1.1	10.5	13.4	41.8	7.6	2.0
2011	5.5	6.7	1.5	5.4	25.6	35.4	1.8	2.1	1.8	1.5	25.7
2012	1.3	2.3	-0.6	-3.2	4.1	-18.2	0.4	-0.1	1.8	1.1	10.1
2013	0.3	2.5	1.5	-1.6	-1.5	-19.7	-1.4	0.1	1.8	1.4	-5.4
2014	1.0	3.7	0.9	-0.9	-1.4	16.6	0.3	-0.1	1.7	1.1	-7.6
2015	-0.8	3.3	0.2	1.5	-26.4	-5.9	1.9	0.4	3.5	1.3	12.4
2016	1.4	0.9	1.9	-3.3	-19.6	18.9	0.2	-1.4	5.0	4.0	17.0
2017	6.1	8.9	3.6	16.8	32.5	25.8	4.1	5.0	2.0	2.2	4.7
2018	2.0	2.6	2.6	-6.0	21.7	-13.9	2.4	1.8	-0.7	-1.0	-6.3
2019	-0.3	2.5	2.7	-0.3	-10.1	-12.0	0.3	0.4	1.7	0.4	10.2
2020	-3.0	2.3	1.7	0.4	-27.0	15.1	-0.6	-0.3	-0.9	-0.1	23.6
2021	3.9	2.3	1.6	10.7	25.8	48.5	2.6	4.6	-1.3	0.2	2.6
2022	10.0	2.8	1.1	1.3	56.3	44.6	0.5	1.9	4.8	2.4	4.8
2023	-0.9	3.0	1.3	-2.3	-7.0	-5.4	-2.6	-1.1	1.0	1.8	3.6
2024	0.04	1.2	1.1	-1.3	-0.2	7.9	-2.5	-1.1	-0.05	1.3	17.4
2023	OGOS	AUG	2.3	-3.8	-12.6	0.7	-2.9	-1.4	-1.3	1.3	6.3
	SEP	SEP	2.2	-3.5	-6.7	5.1	-2.4	-1.1	-1.0	1.3	8.0
	OKT	OCT	2.2	-3.4	-1.7	4.3	-2.1	-1.1	-3.1	1.2	3.9
	NOV	NOV	2.3	-2.9	-7.1	1.3	-2.3	-1.0	-1.3	1.1	3.8
	DIS	DEC	3.1	-2.4	-4.7	9.7	-1.9	-0.9	0.3	1.5	10.9
2024	JAN	JAN	3.1	-2.2	-0.4	12.3	-1.5	-0.9	1.0	1.9	9.6
	FEB	FEB	2.5	-1.0	0.5	12.3	-1.2	-0.9	1.3	1.9	15.0
	MAC	MAR	2.3	-1.6	2.6	9.8	-1.7	-0.8	0.2	1.7	13.9
	APR	APR	1.4	-1.1	3.6	9.7	-1.6	-0.7	3.6	1.8	13.1
	MEI	MAY	1.6	-0.8	12.1	14.3	-1.6	-0.6	0.9	1.6	14.1
	JUN	JUN	1.9	-0.7	10.8	5.6	-2.3	-0.7	-0.4	1.4	8.1
	JUL	JUL	0.3	-0.8	15.3	6.0	-2.3	-1.0	0.5	1.0	11.1
	OGOS	AUG	0.4	-0.8	4.3	0.0	-2.2	-1.1	0.2	1.2	16.6
	SEP	SEP	0.3	-1.4	-11.1	-2.1	-3.4	-1.5	-1.6	0.6	22.7
	OKT	OCT	-0.1	-2.4	-16.8	0.8	-4.2	-1.9	-2.1	0.4	29.8
	NOV	NOV	-0.4	-1.9	-12.8	11.3	-4.2	-1.8	-2.7	0.7	27.5
	DIS	DEC	0.0	-1.5	-5.0	17.5	-3.7	-1.5	-1.3	0.9	28.7
2025	JAN	JAN	-1.3	-1.0	-2.8	13.2	-4.1	-1.3	-1.9	0.7	23.8
	FEB	FEB	-0.9	-1.5	-2.8	11.0	-4.4	-1.5	-3.8	0.7	28.0
	MAC	MAR	-0.8	-1.4	-6.9	7.5	-4.6	-1.7	-3.7	0.5	18.7
	APR	APR	-0.1	-1.6	-13.9	7.2	-4.4	-2.0	-4.2	0.2	20.3
	MEI	MAY	0.3	-2.4	-22.0	1.7	-4.6	-2.3	-3.1	-0.1	21.4
	JUN	JUN	-0.9	-3.2	-20.6	9.1	-4.7	-2.4	-3.5	0.0	26.0
	JUL	JUL	-0.7	-3.8	-21.7	8.6	-4.6	-2.4	-2.7	0.0	32.0
	OGOS ^p	AUG ^p	-1.6	-3.8	-20.0	6.3	-4.6	-2.3	-2.3	0.3	29.8

MALAYSIA
JADUAL 4A : INDEKS VOLUM BAGI IMPORT (2010=100) MENGIKUT SEKSYEN BARANGAN (S.I.T.C.)
TABLE 4A : IMPORT VOLUME INDICES (2010=100) BY COMMODITY SECTION (S.I.T.C.)

TEPOH PERIOD	JUMLAH TOTAL	0 MAKANAN FOOD	1 MINUMAN DAN TEBBAKAU BEVERAGES AND TOBACCO	2 BAHAN-BAHAN MENTAH TIDAK BOLEH DIMAKAN CRUDE MATERIALS, INEDIBLE	3 BAHAN API GALIAN, PELINCIR, DLL., MINERAL FUELS, LUBRICANTS, ETC.	4 MINYAK DAN LEMAK BINATANG DAN SAYUR-SAYURAN ANIMAL AND VEGETABLE OILS AND FATS	5 BAHAN KIMIA CHEMICALS	6 BARANG-BARANG KELUARAN KILANG MANUFACTURED GOODS	7 JENTERA & KELENGKAPAN PENGANGKUTAN MACHINERY & TRANSPORT EQUIPMENT	8 PELBAGAI BARANG KELUARAN KILANG MISCELLANEOUS MANUFACTURED ARTICLES	9 PELBAGAI URUS NIAGA DAN BARANGAN MISCELLANEOUS TRANSACTIONS AND COMMODITIES		
2010	100.0	100.0	100.0	100.0	100.0	100.0	100.0	100.0	100.0	100.0	100.0		
2011	102.8	106.7	129.4	120.8	102.3	119.1	110.6	112.1	95.8	110.6	103.5		
2012	107.4	109.3	159.2	125.5	125.1	120.9	111.5	112.5	98.3	113.7	98.9		
2013	114.5	114.8	168.5	122.5	154.8	65.6	123.2	127.6	100.1	111.1	130.2		
2014	119.4	121.6	166.4	113.7	171.6	61.7	136.4	130.8	101.7	123.8	133.3		
2015	120.8	125.1	186.6	114.7	171.7	98.8	141.5	133.5	102.2	147.6	120.9		
2016	121.4	127.8	182.5	130.8	181.1	65.3	149.1	132.9	103.6	153.5	89.2		
2017	137.2	128.8	143.1	152.3	203.8	64.2	167.8	141.1	119.8	165.0	119.1		
2018	141.4	122.8	144.4	175.7	197.8	74.5	181.1	145.7	123.5	166.2	118.7		
2019	137.0	122.9	137.4	201.3	214.6	82.1	176.5	139.5	113.3	164.3	97.6		
2020	133.1	129.5	95.3	196.9	224.1	95.3	163.0	128.6	112.3	154.9	80.4		
2021	157.9	145.2	93.9	254.4	235.3	108.2	207.3	143.8	135.6	180.5	134.7		
2022	188.0	167.9	128.7	227.7	288.2	93.0	248.1	168.2	165.4	223.4	126.0		
2023	178.3	169.9	126.0	191.3	302.2	60.8	229.4	168.3	153.7	207.6	94.9		
2024	201.7	199.9	128.5	211.8	292.7	52.0	238.2	183.8	191.3	229.0	112.0		
2023	OGOS	AUG	173.1	160.9	133.4	181.5	261.4	74.6	221.2	163.8	156.2	205.7	103.2
	SEP	SEP	174.3	169.6	132.2	196.3	245.9	38.8	223.7	176.1	158.7	210.2	95.1
	OKT	OCT	196.5	184.2	146.7	215.7	349.7	48.2	243.9	177.6	168.3	218.3	130.2
	NOV	NOV	191.3	178.1	123.0	199.4	296.2	39.6	240.8	179.5	172.2	239.7	88.5
	DIS	DEC	188.9	181.8	124.3	204.9	300.5	51.0	225.4	185.3	167.1	236.2	78.6
2024	JAN	JAN	199.0	219.6	129.2	216.7	318.4	39.9	233.9	210.3	169.2	241.3	120.0
	FEB	FEB	175.6	160.7	120.3	229.4	312.1	36.9	209.6	169.5	149.2	196.8	100.6
	MAC	MAR	203.1	199.1	118.1	211.7	366.4	43.8	233.9	180.7	179.8	206.7	122.1
	APR	APR	186.5	190.1	103.2	223.1	250.0	46.8	241.8	184.0	168.9	225.1	129.7
	MEI	MAY	205.5	195.9	134.3	201.4	315.0	61.9	254.0	194.8	186.9	230.1	141.0
	JUN	JUN	195.9	178.0	115.5	186.0	308.6	50.9	238.5	169.4	181.7	219.3	146.1
	JUL	JUL	218.0	218.9	140.0	226.1	270.4	47.1	254.3	197.9	219.2	250.1	101.1
	OGOS	AUG	215.9	234.2	164.7	261.4	246.5	53.7	271.5	194.4	214.4	238.2	116.6
	SEP	SEP	198.6	190.0	125.0	179.9	290.6	46.7	221.2	166.7	199.7	210.1	95.4
	OKT	OCT	209.9	207.0	124.3	192.8	306.3	51.2	239.8	178.5	209.9	226.4	82.6
	NOV	NOV	199.8	200.7	128.6	203.8	266.7	64.6	222.1	174.1	197.7	247.5	98.4
	DIS	DEC	212.5	204.7	138.6	209.2	261.4	80.3	238.2	184.8	218.5	256.1	90.2
2025	JAN	JAN	212.7	218.5	118.3	235.2	249.0	73.8	224.3	172.7	227.0	236.7	74.2
	FEB	FEB	187.9	212.1	89.3	193.1	253.5	58.5	205.2	141.5	191.2	210.0	96.4
	MAC	MAR	202.0	224.1	102.0	209.8	228.4	82.7	239.8	156.8	207.6	231.1	131.2
	APR	APR	231.9	201.2	119.9	219.3	226.7	55.6	243.6	170.2	267.5	247.2	148.2
	MEI	MAY	229.9	201.5	111.9	260.7	266.8	62.7	239.6	185.2	246.1	257.2	153.8
	JUN	JUN	207.3	175.1	110.4	253.5	296.3	57.3	246.0	168.8	205.8	272.3	73.4
	JUL	JUL	228.7	184.3	130.3	243.0	294.4	61.2	238.9	182.4	244.4	291.7	91.6
	OGOS ^p	AUG ^p	211.0	179.7	106.1	252.5	246.1	57.5	246.7	173.7	223.0	264.9	79.2

MALAYSIA
JADUAL 4B : PERATUS PERUBAHAN BULAN KE BULAN INDEKS VOLUM BAGI IMPORT (2010=100) MENGIKUT SEKSYEN BARANGAN (S.I.T.C.)
TABLE 4B : MONTH-ON-MONTH PERCENTAGE CHANGE IMPORT VOLUME INDICES (2010=100) BY COMMODITY SECTION (S.I.T.C.)

TEMPOH PERIOD	JUMLAH TOTAL	0 MAKANAN FOOD	1 MINUMAN DAN TEBAKAU BEVERAGES AND TOBACCO	2 BAHAN-BAHAN MENTAH TIDAK BOLEH DIMAKAN CRUDE MATERIALS, INEDIBLE	3 BAHAN API GALIAN, PELINCIR, DLL. MINERAL FUELS, LUBRICANTS, ETC.	4 MINYAK DAN LEMAK BINATANG DAN SAYUR-SAYURAN ANIMAL AND VEGETABLE OILS AND FATS	5 BAHAN KIMIA CHEMICALS	6 BARANG-BARANG KELUARAN KILANG MANUFACTURED GOODS	7 JENTERA & KELENGKAPAN PENGANGKUTAN MACHINERY & TRANSPORT EQUIPMENT	8 PELBAGAI BARANG KELUARAN KILANG MISCELLANEOUS MANUFACTURED ARTICLES	9 PELBAGAI URUS NIAGA DAN BARANGAN MISCELLANEOUS TRANSACTIONS AND COMMODITIES		
2023	OGOS	<i>AUG</i>	-2.6	-3.1	-2.6	0.8	-17.1	0.7	-3.2	-2.8	3.4	-2.9	19.4
	SEP	<i>SEP</i>	0.7	5.5	-0.9	8.2	-5.9	-48.0	1.2	7.5	1.6	2.2	-7.9
	OKT	<i>OCT</i>	12.7	8.6	11.0	9.9	42.2	24.2	9.0	0.9	6.1	3.8	36.9
	NOV	<i>NOV</i>	-2.6	-3.3	-16.2	-7.6	-15.3	-17.7	-1.3	1.1	2.3	9.8	-32.0
	DIS	<i>DEC</i>	-1.3	2.1	1.0	2.7	1.5	28.7	-6.4	3.2	-2.9	-1.5	-11.1
2024	JAN	<i>JAN</i>	5.4	20.8	4.0	5.8	5.9	-21.7	3.7	13.5	1.2	2.1	52.6
	FEB	<i>FEB</i>	-11.7	-26.8	-6.9	5.9	-2.0	-7.4	-10.4	-19.4	-11.8	-18.4	-16.1
	MAC	<i>MAR</i>	15.6	23.8	-1.8	-7.7	17.4	18.6	11.6	6.6	20.5	5.1	21.3
	APR	<i>APR</i>	-8.2	-4.5	-12.6	5.4	-31.8	6.8	3.4	1.8	-6.0	8.9	6.3
	MEI	<i>MAY</i>	10.2	3.1	30.1	-9.7	26.0	32.3	5.0	5.9	10.6	2.2	8.6
	JUN	<i>JUN</i>	-4.7	-9.2	-14.0	-7.6	-2.0	-17.9	-6.1	-13.0	-2.8	-4.7	3.6
	JUL	<i>JUL</i>	11.3	23.0	21.2	21.6	-12.4	-7.4	6.6	16.8	20.7	14.0	-30.8
	OGOS	<i>AUG</i>	-0.9	7.0	17.7	15.6	-8.8	14.0	6.8	-1.7	-2.2	-4.8	15.3
	SEP	<i>SEP</i>	-8.0	-18.9	-24.1	-31.2	17.9	-13.1	-18.5	-14.3	-6.8	-11.8	-18.1
	OKT	<i>OCT</i>	5.7	9.0	-0.6	7.2	5.4	9.6	8.4	7.1	5.1	7.8	-13.5
	NOV	<i>NOV</i>	-4.8	-3.0	3.5	5.7	-12.9	26.3	-7.4	-2.5	-5.8	9.3	19.1
	DIS	<i>DEC</i>	6.4	2.0	7.7	2.7	-2.0	24.2	7.2	6.1	10.5	3.4	-8.3
2025	JAN	<i>JAN</i>	0.1	6.8	-14.6	12.4	-4.7	-8.1	-5.8	-6.5	3.9	-7.5	-17.8
	FEB	<i>FEB</i>	-11.7	-2.9	-24.5	-17.9	1.8	-20.7	-8.5	-18.1	-15.8	-11.3	29.9
	MAC	<i>MAR</i>	7.5	5.6	14.2	8.7	-9.9	41.4	16.8	10.8	8.6	10.1	36.2
	APR	<i>APR</i>	14.8	-10.2	17.5	4.5	-0.7	-32.8	1.6	8.5	28.9	7.0	12.9
	MEI	<i>MAY</i>	-0.9	0.1	-6.7	18.9	17.7	12.8	-1.6	8.8	-8.0	4.0	3.8
	JUN	<i>JUN</i>	-9.8	-13.1	-1.3	-2.7	11.1	-8.6	2.7	-8.9	-16.4	5.9	-52.3
	JUL	<i>JUL</i>	10.3	5.25	18.0	-4.1	-0.6	6.8	-2.9	8.1	18.8	7.1	24.8
	OGOS^P	<i>AUG^P</i>	-7.8	-2.49	-18.5	3.9	-16.4	-6.0	3.2	-4.8	-8.8	-9.2	-13.5

MALAYSIA
JADUAL 4C : PERATUS PERUBAHAN TAHUN KE TAHUN INDEKS VOLUM BAGI IMPORT (2010=100) MENGIKUT SEKSYEN BARANGAN (S.I.T.C.)
TABLE 4C : YEAR-ON-YEAR PERCENTAGE CHANGE IMPORT VOLUME INDICES (2010=100) BY COMMODITY SECTION (S.I.T.C.)

TEMPOH PERIOD	JUMLAH TOTAL	0 MAKANAN FOOD	1 MINUMAN DAN TEMBAKAU BEVERAGES AND TOBACCO	2 BAHAN-BAHAN MENTAH TIDAK BOLEH DIMAKAN CRUDE MATERIALS, INEDIBLE	3 BAHAN API GALIAN, PELINCIR, DLL. MINERAL FUELS, LUBRICANTS, ETC.	4 MINYAK DAN LEMAK BINATANG DAN SAYUR-SAYURAN ANIMAL AND VEGETABLE OILS AND FATS	5 BAHAN KIMIA CHEMICALS	6 BARANG-BARANG KELUARAN KILANG MANUFACTURED GOODS	7 JENTERA & KELENGKAPAN PENGANGKUTAN MACHINERY & TRANSPORT EQUIPMENT	8 PELBAGAI BARANG KELUARAN KILANG MISCELLANEOUS MANUFACTURED ARTICLES	9 PELBAGAI URUS NIAGA DAN BARANGAN MISCELLANEOUS TRANSACTIONS AND COMMODITIES		
2011	2.8	6.7	29.4	20.9	2.3	19.1	10.6	12.1	-4.2	10.6	3.5		
2012	4.4	2.4	23.0	3.8	22.3	1.5	0.8	0.3	2.5	2.8	-4.5		
2013	6.6	5.0	5.9	-2.4	23.8	-45.7	10.5	13.4	1.8	-2.2	31.7		
2014	4.3	5.9	-1.2	-7.2	10.9	-6.0	10.8	2.5	1.6	11.4	2.4		
2015	1.1	2.9	12.1	0.8	0.0	60.2	3.7	2.1	0.5	19.2	-9.3		
2016	0.6	2.1	-2.2	14.1	5.5	-33.9	5.4	-0.5	1.4	4.0	-26.2		
2017	12.9	0.8	-21.6	16.5	12.6	-1.6	12.5	6.2	15.7	7.5	33.5		
2018	3.1	-4.7	0.9	15.4	-3.0	16.0	8.0	3.3	3.0	0.7	-0.3		
2019	-3.1	0.1	-4.8	14.6	8.5	10.2	-2.5	-4.3	-8.2	-1.2	-17.8		
2020	-2.8	5.3	-30.6	-2.2	4.4	16.0	-7.7	-7.8	-0.9	-5.7	-17.7		
2021	18.6	12.1	-1.4	29.2	5.0	13.6	27.2	11.8	20.7	16.5	67.6		
2022	19.1	15.6	37.0	-10.5	22.5	-14.1	19.7	16.9	22.0	23.7	-6.5		
2023	-5.2	1.2	-2.1	-16.0	4.9	-34.5	-7.5	0.1	-7.1	-7.0	-24.7		
2024	13.1	17.7	2.0	10.7	-3.2	-14.6	3.8	9.2	24.4	10.3	18.0		
2023	OGOS	AUG	-18.9	-12.8	-13.7	-19.9	-38.0	-28.4	-16.3	-2.9	-10.0	-19.2	-23.1
	SEP	SEP	-9.7	1.2	1.5	-7.3	-16.9	-65.1	-9.4	7.2	-8.5	-3.1	-42.8
	OKT	OCT	1.3	4.9	10.2	12.7	0.1	-17.9	6.0	22.1	-3.6	1.2	12.1
	NOV	NOV	3.8	3.6	-16.0	-12.5	18.9	-43.7	2.9	12.1	1.5	-4.3	-22.1
	DIS	DEC	3.7	10.1	-18.1	6.1	7.6	-37.8	-2.4	10.8	4.1	-4.7	-14.4
2024	JAN	JAN	18.2	35.7	1.8	21.4	21.6	-57.3	6.2	34.0	14.3	17.3	65.1
	FEB	FEB	7.0	6.9	-0.9	48.4	-5.2	-49.0	-3.9	22.1	11.5	14.4	-14.9
	MAC	MAR	10.2	7.4	25.6	-8.9	18.3	-18.1	-3.6	3.3	15.4	-5.6	50.6
	APR	APR	11.8	13.8	-12.8	26.1	-16.1	-8.7	13.6	16.4	18.0	27.8	78.3
	MEI	MAY	10.8	13.1	11.7	1.3	-12.3	1.5	0.2	8.0	24.8	15.5	36.4
	JUN	JUN	16.4	11.3	-14.1	5.1	3.1	-29.6	7.4	5.7	29.6	11.2	34.7
	JUL	JUL	22.7	31.8	2.2	25.7	-14.3	-36.4	11.2	17.4	45.0	18.1	17.0
	OGOS	AUG	24.7	45.6	23.5	44.0	-5.7	-28.0	22.8	18.7	37.2	15.8	12.9
	SEP	SEP	13.9	12.0	-5.4	-8.4	18.2	20.4	-1.1	-5.3	25.8	0.0	0.4
	OKT	OCT	6.8	12.4	-15.3	-10.6	-12.4	6.2	-1.7	0.5	24.7	3.7	-36.5
	NOV	NOV	4.4	12.7	4.6	2.2	-10.0	63.1	-7.8	-3.0	14.9	3.3	11.2
	DIS	DEC	12.5	12.6	11.5	2.1	-13.0	57.4	5.7	-0.3	30.7	8.4	14.8
2025	JAN	JAN	6.9	-0.5	-8.4	8.5	-21.8	87.8	-4.2	-17.9	34.2	-1.9	-38.2
	FEB	FEB	7.0	32.0	-25.8	-15.8	-18.8	58.3	-2.1	-16.5	28.2	6.7	-4.2
	MAC	MAR	-0.5	12.6	-13.6	-0.9	-37.7	88.6	2.5	-13.2	15.4	11.8	7.5
	APR	APR	24.5	5.9	16.1	-1.7	-9.3	18.6	0.8	-7.5	58.7	10.0	14.2
	MEI	MAY	11.8	2.8	-16.7	29.4	-15.3	1.2	-5.7	-4.9	31.6	11.8	9.1
	JUN	JUN	5.8	-1.6	-4.4	36.3	-4.0	12.6	3.2	-0.4	13.3	24.2	-49.7
	JUL	JUL	4.9	-15.8	-6.9	7.4	8.9	29.9	-6.0	-7.8	11.5	16.6	-9.4
	OGOS ^p	AUG ^p	-2.3	-23.3	-35.6	-3.4	-0.2	7.1	-9.1	-10.6	4.0	11.2	-32.0

MALAYSIA
JADUAL 5A : TERMA PERDAGANGAN (2010=100) MENGIKUT SEKSYEN BARANGAN (S.I.T.C)
TABLE 5A: TERMS OF TRADE (2010=100) BY COMMODITY SECTION (S.I.T.C.)

TEMPOH PERIOD	JUMLAH TOTAL	0 MAKANAN FOOD	1 MINUMAN DAN TEBAKAU BEVERAGES AND TOBACCO	2 BAHAN-BAHAN MENTAH TIDAK BOLEH DIMAKAN CRUDE MATERIALS, INEDIBLE	3 BAHAN API GALIAN, PELINCIR, DLL. MINERAL FUELS, LUBRICANTS, ETC.	4 MINYAK DAN LEMAK BINATANG DAN SAYUR-SAYURAN ANIMAL AND VEGETABLE OILS AND FATS	5 BAHAN KIMIA CHEMICALS	6 BARANG-BARANG KELUARAN KILANG MANUFACTURED GOODS	7 JENTERA & KELENGKAPAN PENGANGKUTAN MACHINERY & TRANSPORT EQUIPMENT	8 PELBAGAI BARANG KELUARAN KILANG MISCELLANEOUS MANUFACTURED ARTICLES	9 PELBAGAI URUS NIAGA DAN BARANGAN MISCELLANEOUS TRANSACTIONS AND COMMODITIES		
2010	100.0	100.0	100.0	100.0	100.0	100.0	100.0	100.0	100.0	100.0	100.0		
2011	105.5	103.8	99.4	118.7	103.5	95.1	110.7	105.7	100.2	104.4	93.6		
2012	105.1	103.2	100.7	106.3	108.6	103.3	108.4	97.0	101.3	105.0	106.8		
2013	103.0	102.0	99.7	94.4	108.7	108.8	109.0	94.1	100.2	105.5	114.1		
2014	103.2	101.0	100.4	85.1	112.1	98.8	115.1	94.8	98.5	106.3	125.4		
2015	99.7	102.6	105.0	81.2	107.2	95.6	123.0	97.8	98.2	109.4	108.5		
2016	96.4	107.4	109.7	81.9	100.3	86.8	129.6	98.8	94.0	108.7	108.2		
2017	97.4	105.3	113.9	80.0	96.6	78.0	138.8	98.6	93.3	109.8	116.1		
2018	97.1	105.9	118.4	79.3	92.5	77.5	140.8	98.2	93.2	112.6	126.5		
2019	98.2	106.0	124.0	78.9	103.0	79.4	139.3	95.0	93.9	114.6	109.4		
2020	98.7	107.0	126.2	78.2	105.4	84.6	140.8	94.4	95.8	115.3	81.6		
2021	104.6	108.6	128.6	75.7	112.6	84.6	145.9	94.8	98.8	117.3	87.8		
2022	111.5	110.2	132.8	76.9	116.0	68.9	156.4	97.3	104.0	115.7	150.3		
2023	111.4	113.6	136.6	79.2	113.1	51.7	161.4	98.1	110.6	114.8	231.1		
2024	115.8	124.1	144.1	85.1	122.4	46.7	168.9	98.3	112.7	117.3	327.6		
2023	OGOS	AUG	110.5	114.0	135.4	80.5	107.3	46.2	161.0	98.3	112.4	114.9	232.8
	SEP	SEP	110.7	114.2	135.6	79.8	105.0	46.3	162.2	98.2	112.1	115.8	267.2
	OKT	OCT	111.5	114.7	135.8	79.7	109.0	46.5	162.1	98.6	111.6	114.9	292.2
	NOV	NOV	114.5	115.1	135.8	80.6	124.6	47.3	162.5	98.3	110.6	114.8	281.5
	DIS	DEC	115.0	116.1	136.6	81.3	127.3	46.8	162.5	98.0	112.0	115.3	251.0
2024	JAN	JAN	114.5	117.3	137.2	81.9	127.1	46.2	163.3	98.0	111.6	116.1	224.5
	FEB	FEB	113.4	119.3	139.1	82.3	120.7	45.8	165.4	98.5	110.5	116.5	255.8
	MAC	MAR	115.2	120.1	139.6	83.1	124.4	47.0	166.7	98.4	111.8	117.0	269.8
	APR	APR	114.0	121.3	142.9	83.6	119.7	48.0	166.9	98.5	110.4	117.0	275.7
	MEI	MAY	114.8	122.4	144.1	84.6	117.6	47.0	168.2	98.3	112.2	117.3	300.6
	JUN	JUN	116.3	123.8	143.8	85.1	123.9	48.3	169.8	98.8	112.2	117.7	322.9
	JUL	JUL	115.2	124.6	143.5	86.1	113.5	47.5	170.5	99.3	113.5	117.3	365.1
	OGOS	AUG	116.0	125.4	144.6	86.1	118.7	46.1	170.4	98.3	113.7	117.3	350.8
	SEP	SEP	117.5	126.8	145.1	86.0	126.4	45.6	170.7	97.5	114.5	117.3	408.3
	OKT	OCT	117.1	128.3	147.3	87.1	126.8	46.0	170.3	97.6	113.8	117.8	393.8
	NOV	NOV	117.5	129.7	149.2	86.5	127.1	45.0	172.3	98.6	113.9	117.9	378.5
	DIS	DEC	117.8	130.0	152.4	88.2	122.9	47.4	172.8	98.0	114.4	117.8	385.4
2025	JAN	JAN	118.4	131.6	156.2	89.2	124.3	49.8	174.7	97.6	114.4	118.9	361.2
	FEB	FEB	118.2	132.4	157.7	89.6	124.9	48.8	175.9	97.5	113.8	119.2	343.2
	MAC	MAR	119.5	133.8	160.3	90.5	127.3	48.7	177.1	97.8	115.3	119.7	386.0
	APR	APR	119.1	135.7	160.8	90.9	131.1	47.4	177.3	98.0	114.6	120.6	349.0
	MEI	MAY	118.6	136.2	160.5	91.1	134.4	46.8	176.6	97.8	114.2	121.4	313.7
	JUN	JUN	121.5	136.6	163.8	90.8	134.0	43.7	176.3	97.4	114.7	122.4	707.0
	JUL	JUL	121.1	137.1	164.8	90.2	128.5	43.4	176.9	97.6	115.9	122.8	667.9
	OGOS ^P	AUG ^P	122.5	137.7	168.1	90.4	131.2	44.0	177.8	97.8	116.7	123.3	710.9

MALAYSIA
JADUAL 5B : PERATUS PERUBAHAN BULAN KE BULAN TERMA PERDAGANGAN (2010=100) MENGIKUT SEKSYEN BARANGAN (S.I.T.C.)
TABLE 5B: MONTH-ON-MONTH PERCENTAGE CHANGE OF TERMS OF TRADE (2010=100) BY COMMODITY SECTION (S.I.T.C.)

TEPOH PERIOD	JUMLAH TOTAL	0 MAKANAN FOOD	1 MINUMAN DAN TEBAKAU BEVERAGES AND TOBACCO	2 BAHAN-BAHAN MENTAH TIDAK BOLEH DIMAKAN CRUDE MATERIALS, INEDIBLE	3 BAHAN API GALIAN, PELINCIR, DLL. MINERAL FUELS, LUBRICANTS, ETC.	4 MINYAK DAN LEMAK BINATANG DAN SAYUR-SAYURAN ANIMAL AND VEGETABLE OILS AND FATS	5 BAHAN KIMIA CHEMICALS	6 BARANG-BARANG KELUARAN KILANG MANUFACTURED GOODS	7 JENTERA & KELENGKAPAN PENGANGKUTAN MACHINERY & TRANSPORT EQUIPMENT	8 PELBAGAI BARANG KELUARAN KILANG MISCELLANEOUS MANUFACTURED ARTICLES	9 PELBAGAI URUS NIAGA DAN BARANGAN MISCELLANEOUS TRANSACTIONS AND COMMODITIES		
2023	OGOS	<i>AUG</i>	-0.5	0.0	-0.2	-0.1	-1.9	-9.2	-0.1	-0.3	-0.6	-0.9	13.7
	SEP	<i>SEP</i>	0.2	0.2	0.1	-0.8	-2.1	0.1	0.8	-0.1	-0.3	0.8	14.8
	OKT	<i>OCT</i>	0.7	0.4	0.2	-0.2	3.8	0.5	-0.1	0.4	-0.5	-0.7	9.4
	NOV	<i>NOV</i>	2.7	0.4	0.0	1.2	14.3	1.7	0.3	-0.3	-0.9	-0.1	-3.7
	DIS	<i>DEC</i>	0.4	0.9	0.6	0.8	2.2	-1.0	0.0	-0.3	1.3	0.4	-10.8
2024	JAN	<i>JAN</i>	-0.4	1.0	0.4	0.8	-0.2	-1.3	0.5	0.0	-0.4	0.7	-10.6
	FEB	<i>FEB</i>	-1.0	1.7	1.3	0.4	-5.1	-0.8	1.3	0.6	-1.0	0.4	13.9
	MAC	<i>MAR</i>	1.6	0.7	0.4	1.0	3.1	2.8	0.8	-0.1	1.2	0.4	5.5
	APR	<i>APR</i>	-1.0	1.0	2.3	0.6	-3.8	2.1	0.1	0.1	-1.2	-0.1	2.2
	MEI	<i>MAY</i>	0.7	1.0	0.8	1.2	-1.8	-2.1	0.8	-0.2	1.6	0.3	9.0
	JUN	<i>JUN</i>	1.3	1.1	-0.2	0.6	5.4	2.8	1.0	0.5	0.0	0.4	7.4
	JUL	<i>JUL</i>	-0.9	0.7	-0.3	1.1	-8.3	-1.8	0.4	0.5	1.1	-0.4	13.0
	OGOS	<i>AUG</i>	0.7	0.6	0.8	0.0	4.6	-3.0	-0.1	-1.0	0.2	0.0	-3.9
	SEP	<i>SEP</i>	1.3	1.2	0.3	-0.1	6.4	-1.0	0.1	-0.9	0.7	0.0	16.4
	OKT	<i>OCT</i>	-0.3	1.2	1.5	1.3	0.4	1.0	-0.2	0.1	-0.7	0.5	-3.5
	NOV	<i>NOV</i>	0.4	1.1	1.3	-0.7	0.2	-2.2	1.2	1.1	0.1	0.0	-3.9
	DIS	<i>DEC</i>	0.2	0.2	2.1	2.0	-3.3	5.3	0.3	-0.6	0.4	-0.1	1.8
2025	JAN	<i>JAN</i>	0.6	1.2	2.5	1.1	1.1	5.0	1.1	-0.5	0.0	0.9	-6.3
	FEB	<i>FEB</i>	-0.2	0.6	0.9	0.4	0.5	-2.0	0.7	-0.1	-0.5	0.2	-5.0
	MAC	<i>MAR</i>	1.2	1.0	1.7	1.0	2.0	-0.2	0.7	0.4	1.3	0.4	12.5
	APR	<i>APR</i>	-0.3	1.5	0.3	0.4	2.9	-2.8	0.1	0.1	-0.6	0.8	-9.6
	MEI	<i>MAY</i>	-0.5	0.4	-0.2	0.3	2.6	-1.2	-0.4	-0.2	-0.4	0.7	-10.1
	JUN	<i>JUN</i>	2.5	0.3	2.1	-0.4	-0.3	-6.7	-0.2	-0.4	0.4	0.8	125.4
	JUL	<i>JUL</i>	-0.4	0.4	0.6	-0.6	-4.1	-0.5	0.3	0.2	1.1	0.3	-5.5
	OGOS^P	<i>AUG^P</i>	1.2	0.4	2.0	0.2	2.1	1.3	0.5	0.2	0.7	0.4	6.4

MALAYSIA
JADUAL 5C : PERATUS PERUBAHAN TAHUN KE TAHUN TERMA PERDAGANGAN (2010=100) MENGIKUT SEKSYEN BARANGAN (S.I.T.C.)
TABLE 5C: YEAR-ON-YEAR PERCENTAGE CHANGE OF TERMS OF TRADE (2010=100) BY COMMODITY SECTION (S.I.T.C.)

TEMPOH PERIOD	JUMLAH TOTAL	0 MAKANAN FOOD	1 MINUMAN DAN TEBBAKAU BEVERAGES AND TOBACCO	2 BAHAN-BAHAN MENTAH TIDAK BOLEH DIMAKAN CRUDE MATERIALS, INEDIBLE	3 BAHAN API GALIAN, PELINCIR, DLL. MINERAL FUELS, LUBRICANTS, ETC.	4 MINYAK DAN LEMAK BINATANG DAN SAYUR-SAYURAN ANIMAL AND VEGETABLE OILS AND FATS	5 BAHAN KIMIA CHEMICALS	6 BARANG-BARANG KELUARAN KILANG MANUFACTURED GOODS	7 JENTERA & KELENGKAPAN PENGANGKUTAN MACHINERY & TRANSPORT EQUIPMENT	8 PELBAGAI BARANG KELUARAN KILANG MISCELLANEOUS MANUFACTURED ARTICLES	9 PELBAGAI URUS NIAGA DAN BARANGAN MISCELLANEOUS TRANSACTIONS AND COMMODITIES		
2011	5.5	3.8	-0.7	18.7	3.5	-4.9	10.6	5.7	0.2	4.4	-6.5		
2012	-0.3	-0.6	1.3	-10.4	4.8	8.6	-2.0	-8.2	1.2	0.5	14.2		
2013	-2.0	-1.2	-1.0	-11.2	0.2	5.3	0.5	-3.0	-1.2	0.5	6.8		
2014	0.2	-0.9	0.7	-9.8	3.1	-9.2	5.6	0.8	-1.7	0.7	9.9		
2015	-3.4	1.6	4.6	-4.6	-4.4	-3.3	6.9	3.1	-0.3	2.9	-13.5		
2016	-3.3	4.7	4.5	0.8	-6.4	-9.2	5.4	1.0	-4.3	-0.6	-0.2		
2017	1.1	-1.9	3.8	-2.2	-3.7	-10.2	7.1	-0.2	-0.8	1.0	7.3		
2018	-0.4	0.6	4.0	-0.9	-4.2	-0.7	1.4	-0.3	-0.1	2.5	9.0		
2019	1.1	0.0	4.7	-0.5	11.3	2.5	-1.1	-3.3	0.8	1.8	-13.5		
2020	0.5	1.0	1.8	-0.9	2.4	6.5	1.1	-0.7	2.0	0.6	-25.4		
2021	6.0	1.5	1.9	-3.2	6.8	-0.1	3.6	0.5	3.1	1.7	7.5		
2022	6.6	1.5	3.3	1.6	3.0	-18.5	7.1	2.6	5.2	-1.4	71.2		
2023	-0.1	3.1	2.9	3.0	-2.5	-24.9	3.3	0.8	6.4	-0.8	53.8		
2024	3.9	9.2	5.5	7.4	8.2	-9.8	4.6	0.2	1.9	2.2	41.8		
2023	OGOS	AUG	-1.3	2.8	2.1	4.5	-7.2	2.0	1.0	8.1	-0.9	36.1	
	SEP	SEP	-2.1	2.9	1.1	3.5	-15.5	2.3	0.9	7.7	0.0	57.5	
	OKT	OCT	-0.8	3.0	1.1	4.1	-12.1	2.2	0.9	6.8	0.1	52.0	
	NOV	NOV	2.6	2.9	0.7	6.2	3.8	2.2	0.2	4.5	-0.1	61.5	
	DIS	DEC	3.0	3.9	0.3	6.5	8.0	2.1	0.5	4.2	1.0	23.7	
2024	JAN	JAN	2.7	5.1	0.2	6.7	6.7	-21.9	2.4	0.0	2.8	1.6	40.1
	FEB	FEB	3.4	6.8	1.3	7.0	6.2	-19.3	3.4	1.2	3.7	2.4	32.3
	MAC	MAR	4.4	7.0	1.8	7.5	10.9	-17.3	3.3	0.8	3.9	2.3	8.2
	APR	APR	3.0	7.7	4.2	6.9	11.6	-14.1	3.3	1.1	-1.2	2.2	26.1
	MEI	MAY	3.6	8.5	4.6	7.3	4.8	-15.8	3.8	0.0	1.5	2.8	59.8
	JUN	JUN	5.4	8.3	4.3	6.5	11.9	-8.3	5.1	0.2	1.9	2.7	38.1
	JUL	JUL	3.8	9.3	5.7	6.9	3.8	-6.7	5.9	0.8	0.3	1.2	78.3
	OGOS	AUG	5.0	10.0	6.8	6.9	10.7	-0.3	5.9	0.0	1.2	2.1	50.7
	SEP	SEP	6.1	11.1	7.1	7.7	20.3	-1.5	5.2	-0.7	2.1	1.3	52.8
	OKT	OCT	5.0	11.9	8.5	9.3	16.3	-1.0	5.1	-1.0	1.9	2.5	34.8
	NOV	NOV	2.6	12.7	9.9	7.3	2.0	-4.8	6.0	0.4	3.0	2.7	34.5
	DIS	DEC	2.4	12.0	11.5	8.6	-3.4	1.4	6.3	0.0	2.1	2.2	53.5
2025	JAN	JAN	3.4	12.2	13.8	8.9	-2.3	7.9	7.0	-0.4	2.5	2.4	60.9
	FEB	FEB	4.2	11.0	13.4	8.9	3.5	6.6	6.4	-1.0	3.0	2.3	34.2
	MAC	MAR	3.8	11.4	14.9	8.9	2.4	3.6	6.2	-0.6	3.1	2.2	43.1
	APR	APR	4.5	11.9	12.5	8.7	9.5	-1.4	6.3	-0.5	3.8	3.1	26.6
	MEI	MAY	3.3	11.3	11.4	7.7	14.3	-0.5	5.0	-0.5	1.8	3.5	4.4
	JUN	JUN	4.5	10.4	13.9	6.6	8.2	-9.7	3.8	-1.4	2.2	4.0	118.9
	JUL	JUL	5.1	10.0	14.9	4.8	13.2	-8.5	3.7	-1.7	2.1	4.7	83.0
	OGOS ^P	AUG ^P	5.6	9.8	16.2	5.0	10.5	-4.5	4.3	-0.5	2.6	5.1	102.7

JADUAL 6 : INDEKS VOLUM EKSPORT - ASAL & PELARASAN MUSIM (2010=100)
TABLE 6 : EXPORT VOLUME INDICES - ACTUAL & SEASONALLY ADJUSTED (2010=100)

TEMPOH PERIOD			ASAL ACTUAL	% PERUBAHAN BULAN KE BULAN % CHANGE MONTH-ON-MONTH	PELARASAN MUSIM SEASONALLY ADJUSTED	% PERUBAHAN BULAN KE BULAN % CHANGE MONTH-ON-MONTH
2022	OGOS	AUG	179.5	7.7	189.1	16.4
	SEP	SEP	181.1	0.9	179.4	-5.1
	OKT	OCT	165.8	-8.5	153.8	-14.3
	NOV	NOV	164.0	-1.1	166.1	8.0
	DIS	DEC	171.2	4.4	160.9	-3.1
2023	JAN	JAN	148.5	-13.2	149.9	-6.9
	FEB	FEB	150.1	1.1	168.1	12.2
	MAC	MAR	171.2	14.0	165.2	-1.7
	APR	APR	139.4	-18.6	136.3	-17.5
	MEI	MAY	158.7	13.8	170.1	24.8
	JUN	JUN	164.4	3.6	157.7	-7.3
	JUL	JUL	155.1	-5.7	155.8	-1.2
	OGOS	AUG	152.2	-1.8	161.3	3.6
	SEP	SEP	161.8	6.3	154.3	-4.3
	OKT	OCT	162.1	0.2	155.8	1.0
	NOV	NOV	153.2	-5.5	155.2	-0.4
	DIS	DEC	150.6	-1.7	140.9	-9.2
2024	JAN	JAN	156.4	3.9	163.4	16.0
	FEB	FEB	142.3	-9.0	156.9	-4.0
	MAC	MAR	162.0	13.8	153.3	-2.3
	APR	APR	145.2	-10.4	142.3	-7.2
	MEI	MAY	160.3	10.4	172.3	21.1
	JUN	JUN	156.9	-2.1	149.1	-13.5
	JUL	JUL	164.7	5.0	169.6	13.8
	OGOS	AUG	161.6	-1.9	170.4	0.5
	SEP	SEP	155.8	-3.6	146.8	-13.8
	OKT	OCT	163.2	4.8	157.0	7.0
	NOV	NOV	159.1	-2.5	158.7	1.1
	DIS	DEC	173.0	8.8	164.0	3.3
2025	JAN	JAN	152.8	-11.6	159.2	-2.8
	FEB	FEB	146.9	-3.9	162.8	2.3
	MAC	MAR	170.2	15.9	161.2	-1.0
	APR	APR	167.0	-1.8	170.8	6.0
	MEI	MAY	160.9	-3.7	166.1	-2.7
	JUN	JUN	151.3	-6.0	145.9	-12.1
	JUL	JUL	174.0	15.0	174.9	19.9
	OGOS ^P	AUG ^P	161.9	-6.9	162.8	-6.9

JADUAL 7 : INDEKS VOLUM IMPORT - ASAL & PELARASAN MUSIM (2010=100)
TABLE 7 : IMPORT VOLUME INDICES - ACTUAL & SEASONALLY ADJUSTED (2010=100)

TEMPOH PERIOD			ASAL ACTUAL	% PERUBAHAN BULAN KE BULAN % CHANGE MONTH-ON-MONTH	PELARASAN MUSIM SEASONALLY ADJUSTED	% PERUBAHAN BULAN KE BULAN % CHANGE MONTH-ON-MONTH
2022	OGOS	<i>AUG</i>	213.5	6.9	213.4	9.0
	SEP	<i>SEP</i>	193.1	-9.6	195.5	-8.4
	OKT	<i>OCT</i>	193.9	0.4	189.6	-3.0
	NOV	<i>NOV</i>	184.3	-5.0	179.7	-5.3
	DIS	<i>DEC</i>	182.1	-1.2	175.3	-2.4
2023	JAN	<i>JAN</i>	168.3	-7.6	165.6	-5.6
	FEB	<i>FEB</i>	164.1	-2.5	183.6	10.9
	MAC	<i>MAR</i>	184.3	12.3	178.2	-2.9
	APR	<i>APR</i>	166.8	-9.5	159.7	-10.4
	MEI	<i>MAY</i>	185.5	11.2	187.0	17.1
	JUN	<i>JUN</i>	168.3	-9.3	168.5	-9.9
	JUL	<i>JUL</i>	177.7	5.6	174.2	3.4
	OGOS	<i>AUG</i>	173.1	-2.6	170.4	-2.2
	SEP	<i>SEP</i>	174.3	0.7	178.4	4.7
	OKT	<i>OCT</i>	196.5	12.7	197.0	10.4
	NOV	<i>NOV</i>	191.3	-2.6	188.8	-4.1
	DIS	<i>DEC</i>	188.9	-1.3	189.8	0.5
2024	JAN	<i>JAN</i>	199.0	5.4	208.0	9.6
	FEB	<i>FEB</i>	175.6	-11.7	193.7	-6.9
	MAC	<i>MAR</i>	203.1	15.6	192.2	-0.8
	APR	<i>APR</i>	186.5	-8.2	182.9	-4.8
	MEI	<i>MAY</i>	205.5	10.2	220.9	20.8
	JUN	<i>JUN</i>	195.9	-4.7	186.2	-15.7
	JUL	<i>JUL</i>	218.0	11.3	224.5	20.6
	OGOS	<i>AUG</i>	215.9	-0.9	227.7	1.4
	SEP	<i>SEP</i>	198.6	-8.0	187.2	-17.8
	OKT	<i>OCT</i>	209.9	5.7	202.0	7.9
	NOV	<i>NOV</i>	199.8	-4.8	199.4	-1.3
	DIS	<i>DEC</i>	212.5	6.4	201.5	1.0
2025	JAN	<i>JAN</i>	212.7	0.1	212.9	5.7
	FEB	<i>FEB</i>	187.9	-11.7	208.7	-2.0
	MAC	<i>MAR</i>	202.0	7.5	193.3	-7.4
	APR	<i>APR</i>	231.9	14.8	238.6	23.4
	MEI	<i>MAY</i>	229.9	-0.9	232.8	-2.4
	JUN	<i>JUN</i>	207.3	-9.8	207.8	-10.7
	JUL	<i>JUL</i>	228.7	10.3	221.8	6.7
	OGOS^P	<i>AUG^P</i>	211.0	-7.8	205.8	-7.2

A spiral-bound notebook with a light blue cover is shown at an angle. The notebook is open, revealing a white page with a blue rectangular area. The spiral binding is visible on the left side. The background is a light, neutral color.

3. NOTA TEKNIKAL

TECHNICAL NOTE

NOTA TEKNIKAL

1. PENGENALAN

- 1.1 Indeks Perdagangan Luar Negeri (IPLN) mengukur perubahan paras nilai seunit serta volum eksport dan import barangan Malaysia.
- 1.2 Nombor indeks ini mencerminkan peratusan kenaikan atau penurunan dalam paras nilai seunit dan volum. IPLN telah disusun buat kali pertama dengan menggunakan tahun 1970 sebagai tahun asas (1970=100) dan seterusnya diikuti dengan 1999=100, 2005=100 dan 2010 =100 mulai penerbitan bagi bulan rujukan Januari 2016.
- 1.3 Mulai penerbitan keluaran bulan rujukan Januari 2018, IPLN telah dikemaskini menggunakan "bakul" barangan tahun 2013 dengan mengekalkan tahun asas yang sama, 2010=100. Seterusnya, IPLN (2010=100) dikemaskini sekali lagi menggunakan "bakul" barangan tahun 2015 bermula daripada penerbitan bulan rujukan Januari 2019.

2. OBJEKTIF

- 2.1 Indeks nilai seunit dan volum adalah penunjuk ekonomi utama yang mempunyai pelbagai kegunaan.
- 2.2 Berikut adalah kegunaan utama indeks ini:
 - 2.2.1 Ia mengukur setakat mana perubahan nilai eksport dan import adalah disebabkan oleh perubahan dalam nilai seunit dan perubahan volum.
 - 2.2.2 Ia membolehkan penggubal dasar menilai kesan harga eksport berbanding dengan harga import barangan (yang mana lebih dikenali sebagai terma perdagangan).
 - 2.2.3 Ia boleh digunakan untuk membuat unjuran untuk memastikan perubahan harga, output dan sebagainya yang mungkin berlaku pada masa depan. Perbandingan dan unjuran ini akan memudahkan keputusan dibuat di peringkat syarikat, industri dan kerajaan.
 - 2.2.4 Ia juga dapat mengukur perubahan nilai benar import dan eksport Malaysia mengikut masa dengan menggunakan kaedah "*deflation*".

3. SUMBER DATA

Data yang digunakan dalam pengiraan indeks nilai seunit dan volum diperoleh daripada data perdagangan luar negeri Malaysia yang sebahagian besarnya diproses daripada borang pengikraran kastam.

4. PROSEDUR PENGIRAAN

- 4.1 Prosedur yang digunakan untuk menghasilkan Indeks Nilai Seunit adalah seperti berikut:
 - i. Mengira nilai seunit bagi setiap barangan SITC yang terpilih;
 - ii. Mengira nilai seunit relatif;
 - iii. Mengira wajaran nilai;
 - iv. Mendarab setiap relatif dengan wajaran yang berkaitan;
 - v. Menjumlahkan hasil darab;
 - vi. Membahagikan hasil darab dengan jumlah wajaran.

- 4.2 Indeks nilai seunit relatif purata aritmetik yang berwajarkan nilai tempoh asas adalah bersamaan dengan indeks nilai seunit Laspeyres.

$$p^L = \frac{\sum \frac{p_n}{p_o} (p_o q_o)}{\sum (p_o q_o)} \times 100$$

di mana

p^L	=	Indeks nilai seunit Laspeyres;
p_n	=	Nilai seunit barangan pada tempoh tertentu;
p_o	=	Nilai seunit barangan pada tempoh asas;
$p_o q_o$	=	Wajaran tahun asas

- 4.3 Indeks volum eksport dan import adalah dihasilkan secara tidak langsung daripada pembahagian indeks nilai eksport dan import dengan indeks nilai seunit eksport dan import yang berkaitan. Dalam kes ini, indeks volum yang dibentuk adalah indeks volum Paasche.

- 4.4 Berkuatkuasa mulai penerbitan bulan rujukan Januari 2019, kaedah indeks rantaian Laspeyres akan digunakan dalam pengiraan IPLN (2010=100) dengan menggunakan Disember 2018 sebagai bulan pautan.

IPLN dihitung sebagai indeks rantaian bakul tetap. Ini bermakna bahawa urutan indeks bakul tetap dirantai bersama untuk mewujudkan satu siri masa yang berterusan. Perkara ini perlu untuk mengelakkan perubahan yang tidak dijangka dalam indeks apabila pengemaskinian bakul dilakukan.

Indeks nilai seunit bulan rujukan dihitung berdasarkan perubahan indeks bulan tersebut kepada bulan pautan (bakul baru) didarabkan dengan indeks bulan pautan (bakul lama).

$$P_{t/10}^{ch} = P_{t/D18}^{baru} \times P_{D18/10}^{lama}$$

di mana,

$P_{t/10}^{ch}$	=	Indeks rantaian yang mengukur perubahan nilai seunit dari 2010 kepada sebarang tempoh t
$P_{t/D18}^{baru}$	=	Indeks komposit siri baru yang membandingkan nilai seunit pada sebarang tempoh t kepada bulan pautan
$P_{D18/10}^{lama}$	=	Indeks komposit siri lama yang membandingkan nilai seunit bagi Disember 2018 kepada nilai seunit 2010

- 4.5 Dalam pengiraan indeks, tarif individu telah dikelaskan mengikut *Standard International Trade Classification, Revision 4 (S.I.T.C. Rev 4)* daripada Pertubuhan Bangsa-Bangsa Bersatu.

- 4.6 Indeks import menggunakan nilai 'kos, insuran dan tambang' (*c.i.f.*), sementara indeks eksport dikira menggunakan nilai 'free on board' (*f.o.b.*).

- 4.7 Indeks ini disusun dengan menggunakan tahun 2010 sebagai asas. Siri indeks adalah seperti berikut:

i	Indeks nilai seunit eksport
ii	Indeks volum eksport
iii	Indeks nilai seunit import
iv	Indeks volum import
v	Indeks terma perdagangan

4.8 Indeks ini disusun setiap bulan manakala indeks tahunan dikira berdasarkan data siri bulanan.

4.9 Indeks ini akan disebarakan di peringkat SITC-1-digit dan Malaysia.

5. LIPUTAN

Sebanyak 786 barangan eksport yang mewakili kira-kira 84.4 peratus daripada jumlah nilai eksport yang dicatatkan pada tahun 2015 dan 1,583 barangan import yang meliputi kira-kira 83.0 peratus daripada jumlah nilai import tahun 2015 masing-masing digunakan dalam pengiraan indeks import dan eksport.

6. WAJARAN

Wajaran yang digunakan dalam jenis indeks ini adalah nilai. Data yang digunakan untuk menghasilkan wajaran ini adalah daripada nilai import dan eksport barang dagangan Malaysia tahun 2015. Wajaran yang diagihkan adalah mengikut nilai tersebut pada peringkat SITC-1-digit.

7. KONSEP DAN DEFINISI

7.1 Perubahan harga dalam perdagangan barangan luar negeri ditunjukkan oleh perubahan indeks nilai seunit perdagangan barangan luar negeri yang disusun berdasarkan nilai seunit.

Jadual 1A, 1B dan 1C menyediakan ringkasan perubahan nilai seunit eksport dan Jadual 3A, 3B dan 3C pula, indeks nilai seunit import. Arah aliran komponen nilai seunit adalah ditunjukkan dalam indeks ini, yang mana menyatakan hubungan di antara nilai tempoh semasa dan tempoh asas bagi sesuatu bakul yang mengandungi volum barangan tertentu.

7.2 Indeks volum eksport dan import

Perubahan volum perdagangan barangan luar negeri diperoleh daripada perubahan nilai perdagangan barangan luar negeri setelah dikeluarkan kesan perubahan harga.

Jadual 2A, 2B dan 2C menyediakan ringkasan perubahan indeks volum eksport dan Jadual 4A, 4B dan 4C, indeks volum import. Arah aliran komponen volum adalah ditunjukkan dalam indeks ini, yang mana menyatakan hubungan di antara nilai tempoh semasa dan tempoh asas bagi satu set nilai seunit tertentu.

7.3 Indeks terma perdagangan.

Indeks nilai seunit eksport dan import boleh digunakan untuk mengukur terma perdagangan Malaysia. Indeks terma perdagangan dikira berasaskan kepada nisbah indeks nilai seunit eksport kepada indeks nilai seunit import.

Jadual 5A, 5B dan 5C menyediakan ringkasan perubahan indeks terma perdagangan. Indeks ini dikira dengan mendapatkan nisbah indeks nilai seunit eksport kepada indeks nilai seunit import. Ia menggambarkan kos sesuatu volum yang diimport dari segi volum yang dieksport. Suatu kenaikan dalam terma perdagangan menunjukkan pergerakan yang lebih menguntungkan dan kejatuhan membawa kesan yang sebaliknya. Satu nilai indeks yang lebih atau kurang daripada 100 mencerminkan terma perdagangan yang lebih atau kurang menguntungkan berbanding dengan terma perdagangan tahun asasnya 2010.

8. METODOLOGI

- 8.1 Proses pemadanan kod dilaksanakan bagi menyelaraskan kod *Harmonization System* (HS) 2017 dengan HS2022 yang digunakan bermula Jun 2022.
- 8.2 *Lumpy import* (seperti import kapal terbang dan kapal) adalah tidak termasuk dalam penyusunan.
- 8.3 Kod produk yang mempunyai transaksi kurang dari 7 bulan dalam setahun juga tidak diambil kira.

9. PELARASAN MUSIM

Data siri masa adalah amat berguna untuk ahli ekonomi, pembuat dasar & polisi dan penganalisis siri masa untuk mengenal pasti ciri-ciri penting siri ekonomi seperti arah, *turning point* dan konsistensi antara penunjuk ekonomi yang lain. Kadangkala ciri ini sukar untuk diperhatikan kerana pergerakan bermusim. Oleh itu, sekiranya kesan bermusim boleh disingkirkan, perilaku data siri ini dapat dilihat dengan lebih baik. Anggaran dan penyingkiran kesan bermusim dipanggil **pelarasan bermusim**.

Pelarasan bermusim adalah satu proses untuk mengenal pasti dan menyingkirkan bentuk pola bermusim yang biasa berlaku dalam tempoh satu tahun, yang mungkin juga merangkumi pengaruh dari kesan cuti yang bergerak dan hari bekerja/ berdagang bagi suatu tempoh. Objektif utama proses ini adalah untuk menyerlahkan arah aliran dan pergerakan-pergerakan jangka pendek dalam siri ini.

Di Malaysia, kebanyakan data siri masa terjejas oleh kesan bermusim. Oleh itu, untuk menghapuskan kesan bermusim dan juga melaraskan musim data siri masa ekonomi Malaysia, pakej pelarasan bermusim standard, X-12 ARIMA telah digunakan oleh Jabatan Perangkaan, Malaysia.

Data siri masa ekonomi Malaysia kerap dipengaruhi oleh perayaan agama utama seperti Aidil Fitri bagi umat Islam, Tahun Baru Cina untuk kaum Cina dan Deepavali untuk kaum India. Tarikh perayaan-perayaan ini tetap mengikut tahun lunar tetapi berbeza-beza mengikut kalendar Gregorian. Oleh itu, untuk menganggar dan menyingkirkan kesan cuti yang bergerak dari data siri masa, satu prosedur telah dibangunkan iaitu Seasonal Adjustment For Malaysia (SEAM).

Kaedah SEAM digunakan untuk membuang kesan bermusim bagi data indeks perdagangan luar negeri Malaysia. Pelarasan musim hanya dibuat ke atas data bulanan bagi indeks volum eksport dan indeks volum import. Siri data pelarasan bermusim untuk tiga tahun sebelumnya akan disemak setiap tahun apabila data untuk 12 bulan lengkap.

10. DASAR PINDAAN

Dasar bulan semasa adalah provisional (p) dan tertakluk kepada pindaan sehingga ia dimuktamadkan. Pindaan dibuat sekiranya wujud maklumat tambahan. Perangkaan muktamad Perangkaan Perdagangan Luar Negeri 2024 telah digunakan bermula penerbitan Jun 2025 bagi perubahan dalam indeks volum yang menggunakan kaedah Paasche.

TECHNICAL NOTES

1. INTRODUCTION

- 1.1 *External trade indices (ETI) measure changes in the levels of unit values and volumes of Malaysia's imports and exports.*
- 1.2 *The index numbers, which reflect the percentage rise or fall of unit value and volume levels were first constructed with 1970 as the base year (1970=100) and then base year 1999=100 and 2005=100 subsequently. Currently the indices are rebased to 2010=100, commencing from reference month January 2016.*
- 1.3 *Commencing in reference month of January 2018, ETI was updated using the "basket" of goods for year 2013 by maintaining the same base year, 2010 = 100. Subsequently, ETI (2010=100) has been updated again using the 2015 "basket" of goods starting from reference month January 2019.*

2. OBJECTIVE

- 2.1 *The external trade unit value and volume indices are key economic indicators which have a variety of applications and uses.*
- 2.2 *The following are the main uses of these indices:*
 - 2.2.1 *They provide a measure of the extent to which changes in the values of exports and imports are due to changes in price/unit value levels and the extent to which value changes are accounted for by volume changes.*
 - 2.2.2 *They enable policy makers to assess the effects of price change in exports with those in imports (which is referred to as terms of trade) for commodities.*
 - 2.2.3 *They can be utilized for making projections to ascertain likely future changes in prices, output and so on. These comparisons and projections facilitate decision making at company, industry and government level.*
 - 2.2.4 *They also measure the changes in the real value of Malaysian imports or exports over time using the deflation method.*

3. SOURCES OF DATA

Data used in calculating the export and import unit value and volume indices is derived from Malaysia external trade data which is in turn mainly processed from import and export custom declaration forms.

4. COMPUTATIONAL PROCEDURE

- 4.1 *The procedure used to derive Unit Value Index is as follows:*
 - I. *Compute unit values for each selected SITC commodity item;*
 - II. *Compute unit value relatives;*
 - III. *Compute value weights;*
 - IV. *Multiply each relative by the corresponding weight;*
 - V. *Total the product;*
 - VI. *Divide these totals by the sum of the weights.*

- 4.2 The weighted arithmetic mean of relative unit value index, in which the weights are equal to base-period values, is equivalent to Laspeyres unit value index:

$$p^L = \frac{\sum \frac{P_n}{P_o} (p_o q_o)}{\sum (p_o q_o)} \times 100$$

where

p^L	=	Laspeyres unit value index;
p_n	=	Commodity unit values in the given period;
p_o	=	Commodity unit values in the base period;
$p_o q_o$	=	Base year weights

- 4.3 Volume indices for exports and imports are derived indirectly by deflating indices of values of exports and imports with the corresponding export and import unit value indices. In this case, the resulting indirect volume index will be Paasche volume index.
- 4.4 Effective from the reference month for January 2019, Laspeyres chain index method will be used in the calculation of the ETI which employs December 2018 as the link month.

ETI are calculated as a chain of fixed-basket indices. This means that a sequence of fixed-basket indices have been chained together to create a continuous time series. This is necessary to avoid having breaks in an index when a basket update is performed.

Unit value indices for reference month are calculated based on changes of index for that month over the link month (new basket) multiplied by the link month index (old basket).

$$P_{t/10}^{ch} = P_{t/D18}^{new} \times P_{D18/10}^{old}$$

where,

$P_{t/10}^{ch}$	=	Chain index which measures the changes in unit value from 2010 to any period
$P_{t/D18}^{new}$	=	A new series composite index that compares the unit value at any period t to the link month
$P_{D18/10}^{old}$	=	the old series composite index which compares the unit value for December 2018 to the 2010 unit value

- 4.5 Import indices use 'cost, insurance and freight' (c.i.f.) values, while export indices are calculated using 'free on board' (f.o.b.) values.
- 4.6 The indices are compiled using the year 2010 as the base. These series relate to:
- i Unit value indices of exports
 - ii Volume indices of exports
 - iii Unit value indices of imports
 - iv Volume indices of imports
 - v Terms of trade indices
- 4.7 These indices are compiled for each calendar month while the annual indices are computed from the monthly series.
- 4.8 The indices will be disseminated at the 1-digit SITC section.

5. **COVERAGE**

Approximately 786 export items representing about 84.4 percent of the total value of exports recorded in 2015 and 1,583 import items accounting for about 83.0 percent of the total value of imports in 2015 are used in the calculation of the index of imports and exports, respectively.

6. **WEIGHT**

The weights used in this type of index are values. The data used to derive the weights are the values of Malaysia imports and exports of merchandise during 2015. Weights are allocated in accordance with these values at 1-digit SITC level.

7. **CONCEPT AND DEFINITIONS**

7.1 *Export and import unit value indices*

Price changes in external merchandise trade are reflected by changes in unit value indices of external merchandise trade which are compiled based on unit value.

Table 1A, 1B and 1C provides a summary of changes in the export unit value indices and Table 3A, 3B and 3C, of the import unit value indices. Trends in unit value component are illustrated by these indices, which expresses the relationship between value in the current period and the value in the base period of a given basket containing specific quantities of goods.

7.2 *Export and import volume indices*

Changes in volume of external merchandise trade are derived from changes in external merchandise trade value with the effect of price changes that has been discounted.

Table 2A, 2B and 2C provides a summary of the export volume indices and Table 4A, 4B and 4C, of the import volume indices. Trends in the quantity component are illustrated by this index, which expresses the relationship between the value of a given set of unit values for the current period and the value for the base period.

7.3 *Terms of trade indices*

The export and import unit value indices can be used to measure the Malaysia's terms of trade. The terms of trade index is calculated based on the ratio of unit value index of exports to the unit value index of imports.

Table 5A, 5B and 5C provides a summary of changes in the terms of trade indices. The index is calculated as the ratio of the export unit value index to the import unit value index. It represents the cost of a given volume of imports in terms of exports. A rise in the terms of trade indicates a favourable movement and a fall, an adverse movement. An index value above or below 100 indicates the terms of trade are either more or less favorable than the 2010 base period.

8. **METHODOLOGY**

8.1 *The process of mapping the code has been implemented to streamline the code Harmonization System (HS) 2017 to HS2022 which was in use from June 2022.*

8.2 *Lumpy imports (such as import of aircraft and vessel) are excluded from the compilation.*

8.3 *The product codes which have less than seven transactions in a year are also excluded.*

9. SEASONAL ADJUSTMENT

Time-series data are very useful for economists, policy & decision makers and time-series analysts to identify the important features of economic series such as direction, turning point and consistency between other economic indicators. Sometimes this feature is difficult to observe because of seasonal movements. Thus, if the seasonal effect can be removed, the behaviour of the series would be better viewed. The estimation and removal of the seasonal effects is called seasonal adjustment.

Seasonal adjustment is a process to identify and to remove the regular within-a-year seasonal pattern, which may also include the influences of moving holidays and working/trading days effect in each period. The ultimate objective of the process is to highlight the underlying trends and short-term movements in the series.

In Malaysia, most of the time series data are affected by seasonal effects. Hence, to eliminate the seasonal effect as well as to seasonally adjust the Malaysian economic time series data, a standard seasonal adjustment package, X-12 ARIMA was used by Department of Statistics, Malaysia.

Malaysian economic time series data are often affected by major religious festivals such as Eid-ul Fitr of the Muslims, Chinese New Year of the Chinese and Deepavali of the Indians. These festivals' dates are fixed according to the lunar year but vary according to the Gregorian calendar. Therefore, to estimate and remove moving holiday effect from time-series data, a procedure was developed, namely Seasonal Adjustment for Malaysia (SEAM).

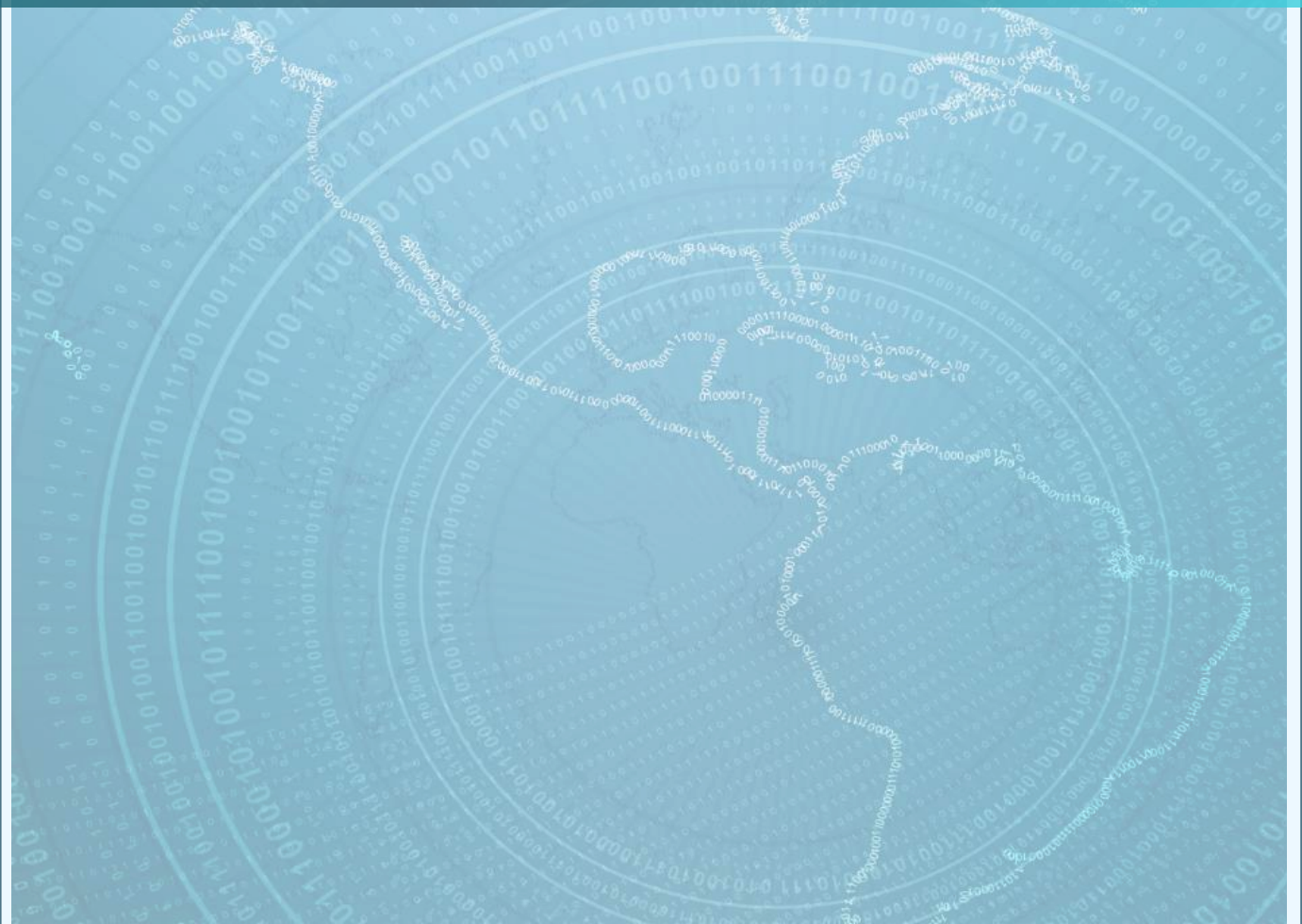
The SEAM method is used to remove seasonal effect for Malaysia's external trade indices data. The seasonal adjustment is only carried out on monthly export and import volume indices. The seasonally adjusted series data for the preceding three years are revised each year when the figures for complete 12 months become available.

10. REVISION POLICY

Data for the current month is provisional(p) and subject to revision until it is finalized. Revisions are made if there are additional information. Final external trade statistics 2024 has been used starting from the June 2025 publication for the change in volume index using Paasche index method.

4. LAMPIRAN

APPENDIX



**PERBANDINGAN WAJARAN MENGIKUT SEKSYEN ANTARA BAKUL 2013 DAN 2015 YANG DIGUNAKAN DALAM
INDEKS PERDAGANGAN LUAR NEGERI, IPLN (2010=100)**

COMPARISON OF WEIGHTS BY SECTIONS BETWEEN 2013 AND 2015 BASKETS USED IN THE EXTERNAL TRADE INDEX,
ETI (2010=100)

SEKSYEN SECTIONS	WAJARAN WEIGHTS			
	EKSPORT EXPORTS		IMPORT IMPORTS	
	2013	2015	2013	2015
0 Makanan <i>Food</i>	3.0	3.520	6.2	6.839
1 Minuman & Tembakau <i>Beverages and Tobacco</i>	0.5	0.600	0.6	0.662
2 Bahan Mentah Tidak Boleh Dimakan <i>Inedible Crude Materials</i>	2.6	2.725	3.8	3.351
3 Minyak Galian <i>Mineral Fuels</i>	22.7	16.097	17.3	12.865
4 Minyak & Lemak Binatang & Sayur-sayuran <i>Animal & Vegetable Oils & Fats</i>	6.9	6.016	0.7	1.070
5 Bahan Kimia <i>Chemicals</i>	7.2	7.781	9.6	10.513
6 Barang-barang Keluaran Kilang <i>Manufactured Goods</i>	9.3	9.647	13.7	13.371
7 Alat Jentera & Kelengkapan Pengangkutan <i>Machinery & Transport Equipment</i>	37.9	42.255	40.1	41.794
8 Pelbagai Barang Keluaran Kilang <i>Miscellaneous Manufactured Articles</i>	9.3	10.929	6.0	7.572
9 Pelbagai Urusniaga & Barangan <i>Miscellaneous Transactions & Commodities</i>	0.6	0.430	2.0	1.963
JUMLAH <i>Total</i>	100.0	100.0	100.0	100.0

JADUAL TARIKH PENGELUARAN INDEKS PERDAGANGAN LUAR NEGERI (2010=100), JANUARI - DISEMBER 2025
SCHEDULED RELEASE DATES FOR EXTERNAL TRADE INDICES (2010=100), JANUARY - DECEMBER 2025

BULAN RUJUKAN <i>REFERENCE MONTH</i>	TARIKH PENGELUARAN	PENERBITAN	2025
JANUARI <i>JANUARY</i>	28	FEBRUARI <i>FEBRUARY</i>	2025
FEBRUARI <i>FEBRUARY</i>	28	MAC <i>MARCH</i>	2025
MAC <i>MARCH</i>	28	APRIL <i>APRIL</i>	2025
APRIL <i>APRIL</i>	28	MEI <i>MAY</i>	2025
MEI <i>MAY</i>	26	JUN <i>JUNE</i>	2025
JUN <i>JUNE</i>	28	JULAI <i>JULY</i>	2025
JULAI <i>JULY</i>	28	OGOS <i>AUGUST</i>	2025
OGOS <i>AUGUST</i>	26	SEPTEMBER <i>SEPTEMBER</i>	2025
SEPTEMBER <i>SEPTEMBER</i>	28	OKTOBER <i>OCTOBER</i>	2025
OKTOBER <i>OCTOBER</i>	28	NOVEMBER <i>NOVEMBER</i>	2025
NOVEMBER <i>NOVEMBER</i>	26	DISEMBER <i>DECEMBER</i>	2025
DISEMBER <i>DECEMBER</i>	28	JANUARI <i>JANUARY</i>	2026

PENERBITAN INI AKAN DITERBITKAN DI LAMAN WEB JABATAN PERANGKAAN MALAYSIA
 (<http://www.statistics.gov.my>) PADA TARIKH PENGELUARAN SELEPAS MASA EMBARGO (12.00 PM)

*THIS PUBLICATION WILL BE POSTED ON THE WEBSITE OF THE DEPARTMENT OF STATISTICS MALAYSIA
 (<http://www.statistics.gov.my>) ON THE RELEASE DATE AFTER THE EMBARGO TIME (12.00 PM)*

ISSN 1675-4344



9 771675 434001



@StatsMalaysia

