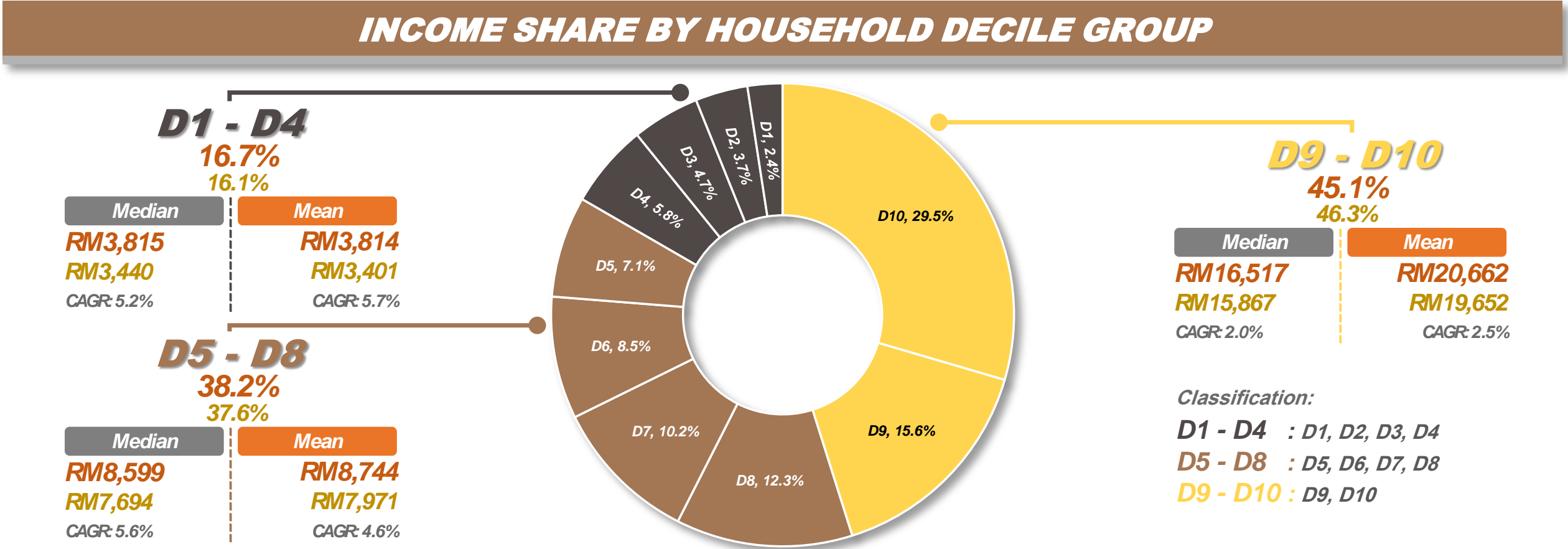
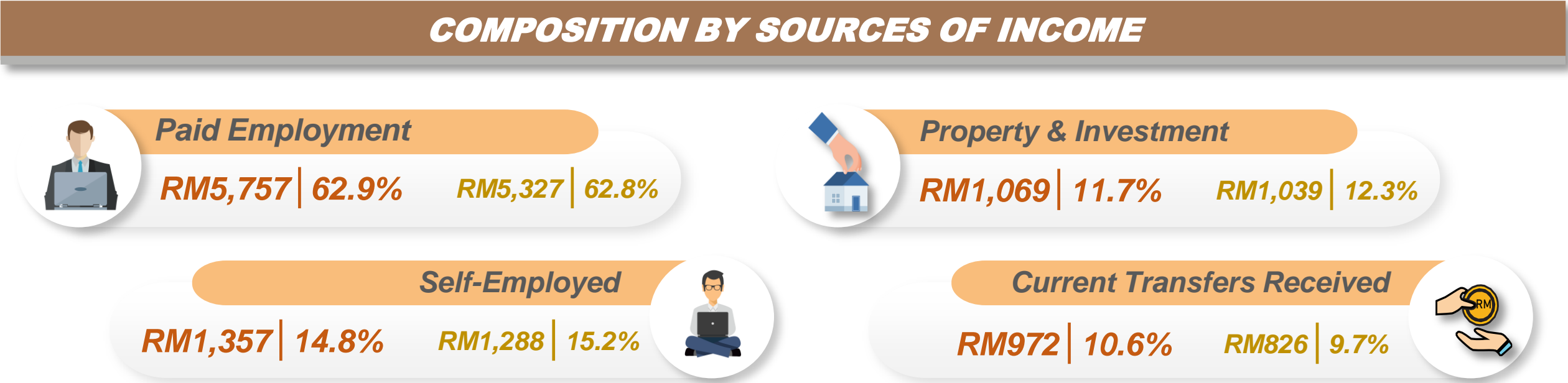
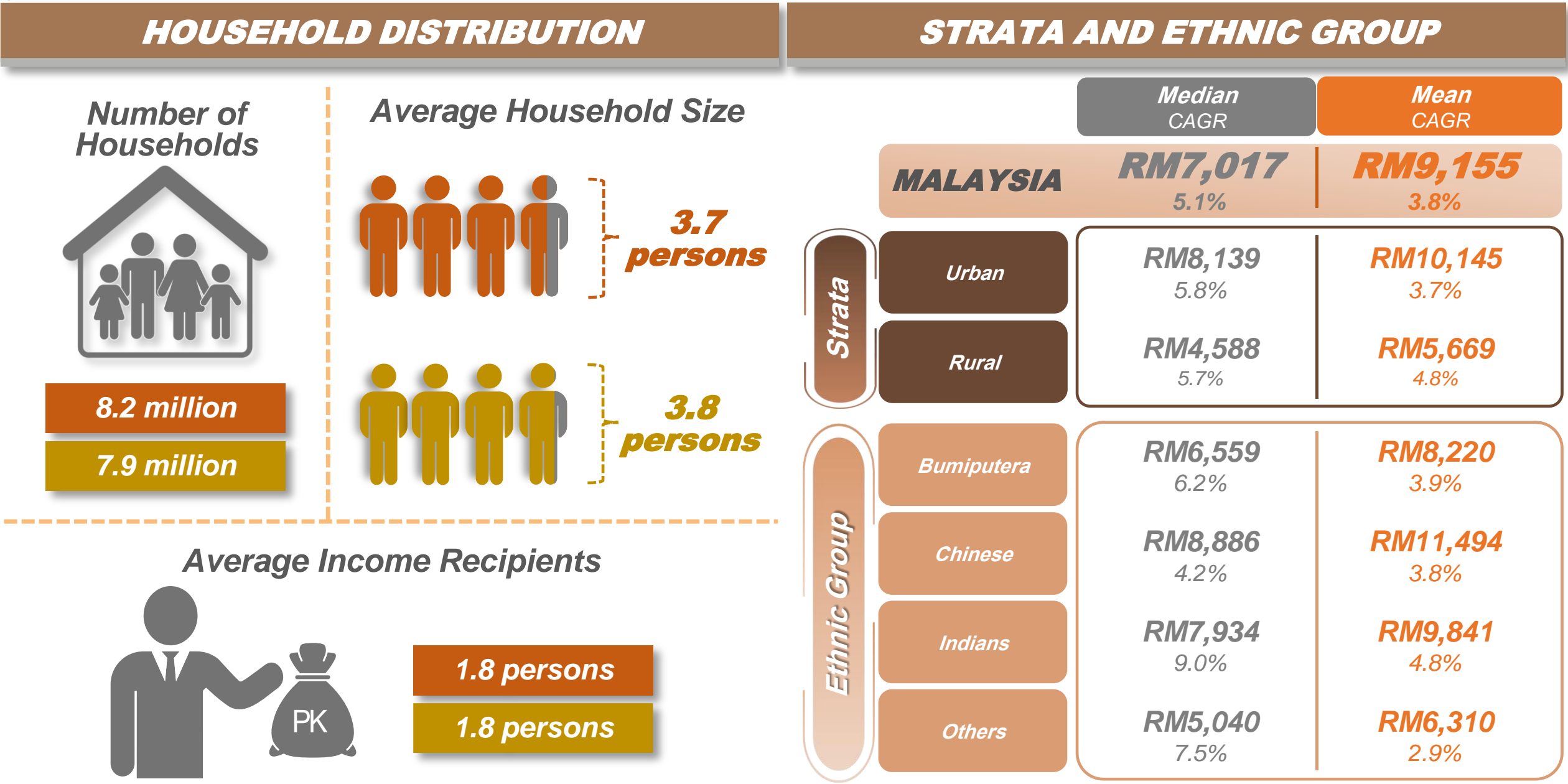




HOUSEHOLD INCOME SURVEY REPORT 2024

HOUSEHOLD INCOME MALAYSIA, 2024



Notes:
1.Data are based on households of Malaysian citizens
2.CAGR: Compounded Annual Growth Rate
3.D: Decile
Source : Household Income Survey Report 2024, Department of Statistics Malaysia (DOSM)

2024
2022



Median household income in Malaysia increased by 5.1 per cent (RM7,017) in 2024

Household gross income

- Malaysia's median household income reached RM 7,017 in 2024, growing by 5.1 per cent annually.
- The mean household income increased to RM9,155, recording a growth rate of 3.8 per cent.
- These figures represent an average household of 3.7 persons with 1.8 income earners, including paid employment, self-employment, income from property and investments, and current transfers received.

Household gross income by strata

- The median household income in urban recorded an increase of 5.8 per cent from RM7,243 in 2022 to RM8,139 in 2024. Similarly, the median household income in rural area increased at a rate of 5.7 per cent from RM4,094 to RM4,588.
- The mean household income in urban recorded a growth 3.7 per cent from RM9,428 (2022) to RM10,145 (2024). Meanwhile in the rural, the mean household income was RM5,669 as compared to RM5,147 (2022) with growth rate of 4.8 per cent.

Household gross income by state

- W.P. Kuala Lumpur recorded the highest monthly median income of RM10,805, followed by W.P. Putrajaya (RM10,769), Selangor (RM10,726), Johor (RM7,712), Pulau Pinang (RM7,386) and W.P. Labuan (RM7,383).
- In terms of mean income, W.P Kuala Lumpur recorded the highest monthly mean income of RM13,985, followed by W.P. Putrajaya (RM13,846), Selangor (RM13,296) and Johor (RM9,484).

