

## CONSULTING USERS ON WELL BEING THEMES

DOSM/BPTMS/1.2023/SERIES 75

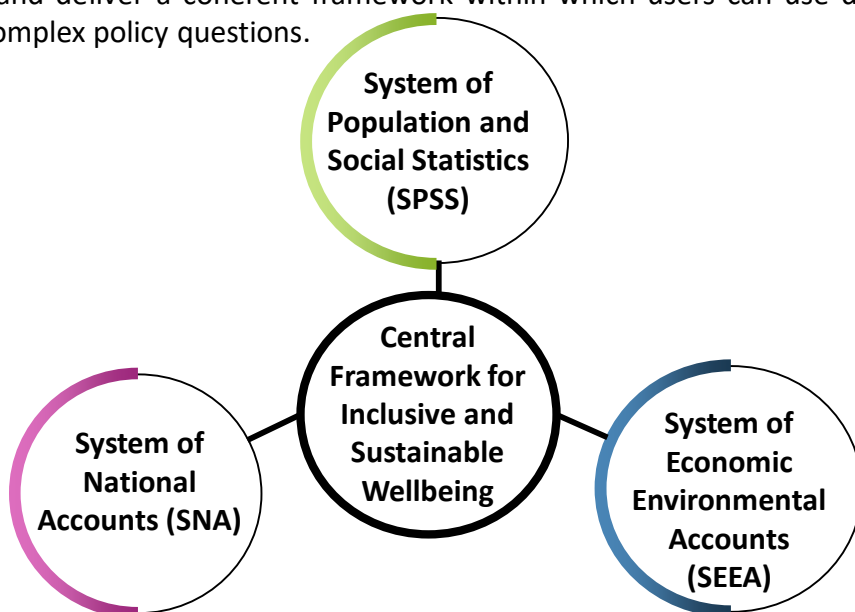
### 1. OVERVIEW SECOND MEETING OF BEYOND GDP SPRINT 2023

The virtual second meeting was held on 15 June 2023 comprising five sessions and eight presenters from United Nations (UN), United Kingdom (UK), United Nations Conference on Trade and Development (UNCTAD), Statistics Netherlands and Mexico.

The meeting on Consulting Users on Wellbeing Themes provided users with a picture of key advances being made by UN, in Europe and in respect to key topics, alongside showcasing how countries can combine and use existing metrics to better understand the themes that are important in the context of measuring and tracking well-being.

### 2. CENTRAL FRAMEWORK

Statistical framework for inclusive and sustainable wellbeing proposed an integrated statistical system which clarifies how the range of statistical standards and output can give a comprehensive picture of the modern world and deliver a coherent framework within which users can use different data in varied ways to meet complex policy questions.



Source: UN Network of Economic Statisticians

### 3. WHY DO WE NEED TO GO BEYOND GDP AND WHY NOW?

We need a new policy paradigm and metrics to tackle today's challenges and secure our future:

- 1 **Crises:** climate change, environment, pandemic, conflict, inequalities - GDP alone is not enough
- 2 Assess progress from environmental, social, digital, distributional and vulnerability aspects
- 3 Go beyond income, beyond today, beyond averages
- 4 Put people and the planet at the centre, be guided by balanced metrics, harness data revolution and new technologies



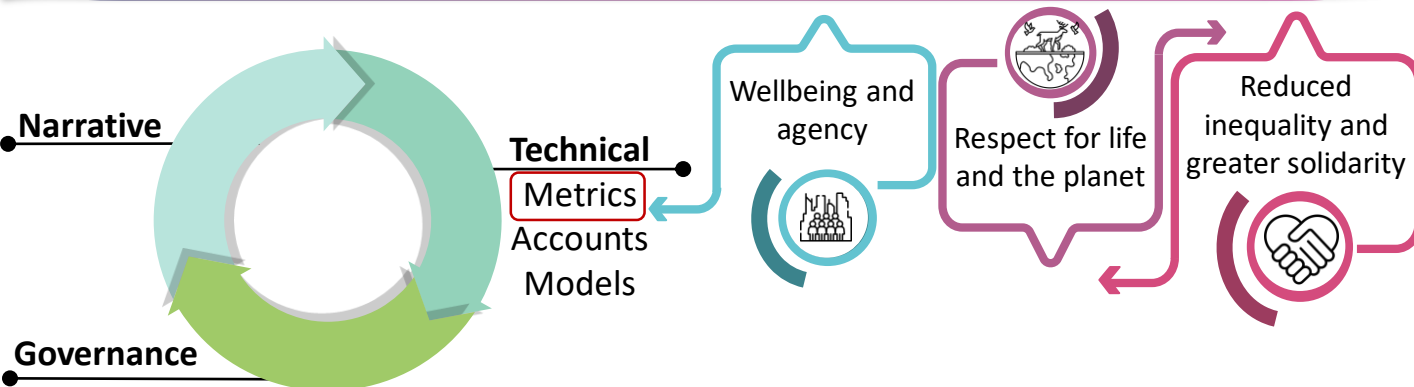
## 4. EXPERIENCE OF IMPLEMENTATION BEYOND GDP AMONG COUNTRIES AND INTERNATIONAL ORGANIZATIONS

### 4.1 WISE HORIZONS

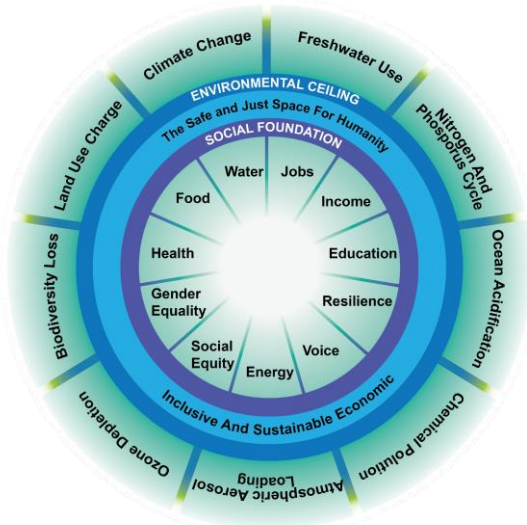
The WISE Horizons project was funded by European Union (EU) and the research work being delivered through the EU's Horizon Programme. The WISE Horizons Network was established to encourage co-creation of the metrics, accounts and models to be created by the network. WISE stands for **Wellbeing, Inclusion, Sustainability and Economy**. The WISE Horizons project seeks to facilitate and accelerate a systemic change in society by creating a framework based on the current post-growth narratives, governance and technical. It will create a synthesis of WISE indicators, presented in a special database and WISE models to transform modelling and policymaking. The WISE Horizons highlighted the need for a similar institutionalised metrics and accounts which could define core terms around inclusive and sustainable wellbeing.

Source: <https://wisehorizons.world/>

The WISE Horizons process is a historic opportunity for a common language which links the technical, governance and narrative levels. Technical level is not only metrics but also accounts and models.



The WISE Horizons strongly emphasizes inclusive and sustainability in measuring well-being. The inclusive and sustainability shown as below:



Notes:

**Inclusive** includes food, water, jobs, income, education, resilience, voice, energy, social equity, gender equality, health.

**Sustainability** includes climate change freshwater use, nitrogen and phosphorus cycles, ocean acidification, chemical pollution, atmosphere aerosol loading, ozone depletion, biodiversity loss and land use charge.



## 4.2 EUROPEAN UNION

An overview of the perspective that the European Union is failing to achieve many of its social and environmental targets, alongside visible challenges around the lack of a governance framework for Beyond GDP. A framework for thinking about the Beyond GDP debate and the different 'levels' that require action namely the Policy level, the Governance level, the Technical level and the Narrative level, illustrating this with a case study. This framework has been implemented in Europe which is the European climate law.

In June 2021, the Council adopted European climate legislation – a key element of the European Green Deal. With that, EU countries are legally obliged to achieve the 2030 and 2050 climate goals. The climate law sets the framework for the actions to be taken by the EU and member states to progressively reduce emissions and ultimately achieve climate neutrality in the EU by 2050.



### POLICY LEVEL

Concrete wellbeing and sustainability centred policies



### GOVERNANCE LEVEL

Incorporation of metrics into governance mechanisms

- Reporting and monitoring
- Policy evaluation
- Budgetary allocation rules
- Enforcement mechanisms
- Political targets



### TECHNICAL LEVEL

Data quality of metrics, accounting frameworks, and integration of metrics into impact assessment tools

- System of National Accounts (SNA)
- Satellite Accounts & System of Environmental-Economic Accounting (SEEA)
- Beyond GDP metrics
- Impact assessment tools



### NARRATIVE LEVEL

Predominant belief systems and discourses that support certain worldviews

The enormous amounts of greenhouse gases to those naturally occurring in the atmosphere, increasing the greenhouse effect and global warming. By 2050, EU countries will have to drastically reduce their greenhouse gas emissions and find ways of compensating for the remaining and unavoidable emissions to reach a net-zero emissions balance. An observation is that basically, Governance level and Technical level are combined in a very specific manner.

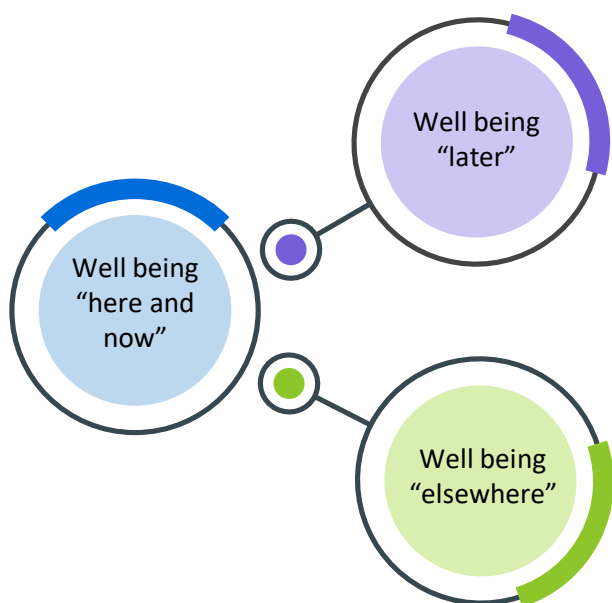


## 4.3 NETHERLANDS

The history between 2014 and 2018 of the development of the wellbeing monitoring framework in the Netherlands and the importance of obtaining and developing political leadership and support, especially at the parliamentary level and how the diverse needs of users are supported by the development of statistical tools based on the categories of Brundtland (1987) that is wellbeing in "here and now", wellbeing "later", and wellbeing "elsewhere". In addition, it also present the key results from the Dutch wellbeing monitor and discusses how Statistics Netherlands supplements and adjusts the wellbeing monitor to accommodate the SDG agenda and further shows how the framework is used, for example being included in fact sheets for ministers and used in policy evaluations.

Enriched SDG monitoring with "here and now", "later" and "elsewhere" dimensions. Using a typology of indicators (input results i.e. throughput) that can improve the evaluation of internal policies in terms of effectiveness and efficiency. Wellbeing involves the quality of life here and now and the extent to which this quality is achieved at the expense of future generations or people in other countries.

Using the study based on the framework below based on Dutch:

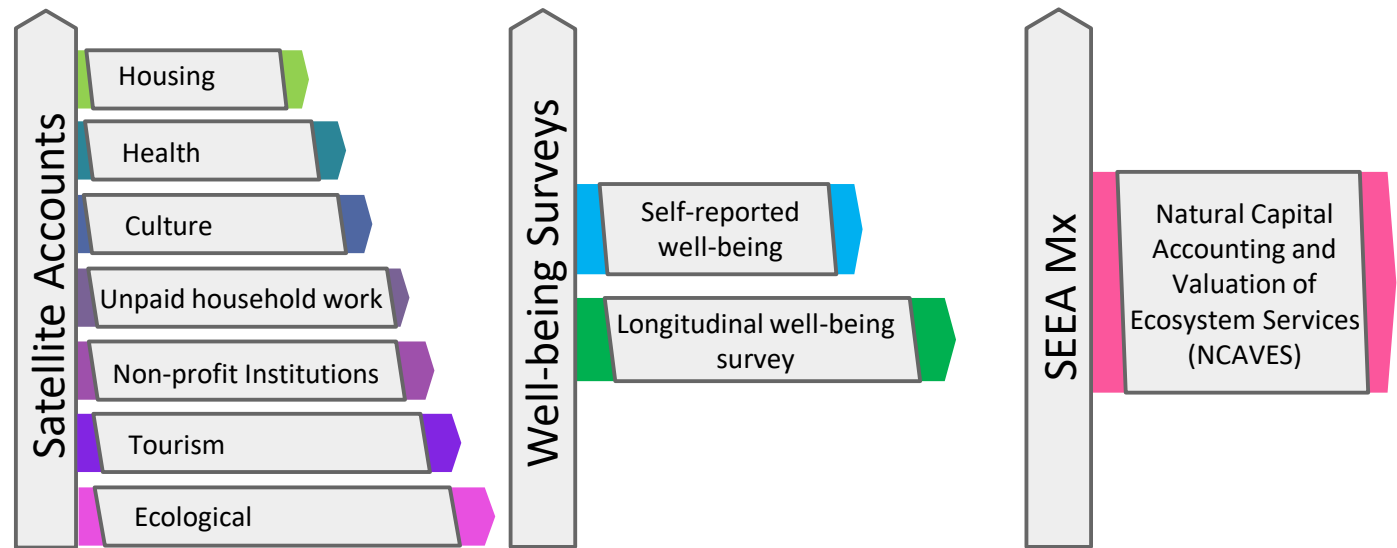


In the broadest sense, sustainability refers to the ability to maintain or support a process continuously over time. In business and policy contexts, sustainability seeks to prevent the depletion of natural or physical resources, so that they will remain available for the long term.



## 4.4 MEXICO

INEGI has established user engagement for the measurement of wellbeing namely Advisory Councils, Collegiate Bodies, Public consultations, Government Agencies and Non-State Actors and international partnerships. There are three central data sources for better measure of wellbeing data which Mexico has focused on developing, namely satellite accounts, wellbeing surveys and SEEA data.

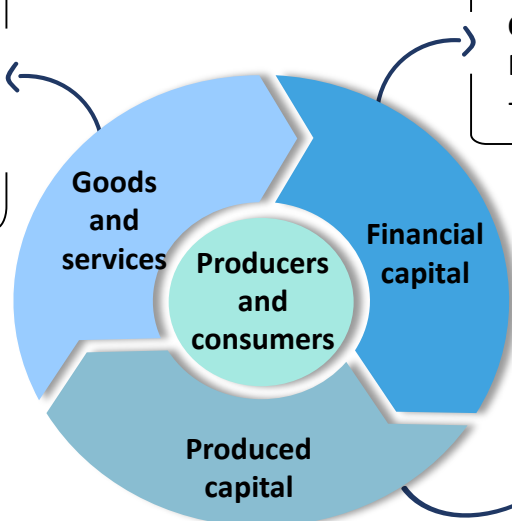


Development of four satellite accounts which are unpaid household work, culture, housing, and Non-Profit Institutions, which have delivered particular benefits, and two wellbeing surveys, the Self Reported Wellbeing Survey and the Living Standards National Survey have been developed and how they provided important additional insights around life satisfaction and subject wellbeing.

## WELLBEING STATISTICS AVAILABLE TO USERS

### System of National Accounts (SNA)

The production of all goods or services that are supplied to units other than their producers, or intended to be so supplied, including the production of goods or services used up in the process of producing such goods or services



#### Capital as Wealth

Net worth / (wealth) = capital + financial assets – financial liabilities

#### Capital as a Factor of Production

Extending “capital” to include human, natural, and other capitals





There are seven measurements of wellbeing and Mexico has used four measures of wellbeing measurement. The summary of four measurements are as below:

01

**UNPAID HOUSEHOLD WORK**

- Published since **2012**.
- Requested by the **Specialized Technical Committee** on Information with a Gender Perspective.
- Source for 5.4.1 SDGs indicator.
- Key source to support the Law of the **National Care System** law



03

**CULTURE**

- Published since **2008**.
- Contributions to the **Annual Report on Cinema** in Mexico
- Source of **22 SDG indicators**.
- INEGI is part of **UNESCO Advisory Group** to develop a Manual on Civil Society Associations.



06

**HOUSING**

- Published since **2008**.
- Informs current policies to improve **financing** for self building and improvement of dwellings.
- Data on sources and amounts of financing and employment in public and private construction and real estate sectors.



07

**NON-PROFIT INSTITUTIONS**

- Contribution of CSOs to well-being through community and philanthropic services and volunteer work.
- Evaluation of Law for the Promotion of CSOs.
- Volunteer Law initiatives (subnational).



## 5. CHALLENGES

The importance of a solid conceptual basis for any framework and outlined some challenges ahead that may want to tackle.

Lack of invested resources & limited expertise

01

Limited demand for wellbeing and sustainability metrics & accounting frameworks

02

How to use (existing) economic, environmental and socio-demographic accounting systems in order to describe how indicators are related

06

Limited integration of wellbeing and sustainability metrics into governance mechanisms and policies.

03

Deficiencies in data quality, lack of standardized methodology, and insufficient integration of metrics into models.

05

Elsewhere/inclusive dimension. Global consultation through regional commissions on themes and indicators to be included?

04

## 6. RECOMMENDATIONS

### LEVEL OF STATISTICS AND DATA QUALITY

1

Provide resources and strengthen statistical capacity-building and data collection, in particular, at the national level.

5

Expand the production and asset boundary of the SNA

2

Strengthen the consideration of wellbeing and sustainability aspects in impact assessment models

6

Strengthen citizen / user capacities & data literacy

3

Further engagement with relevant stakeholders/users

7

Convene an independent high-level expert group to develop a value dashboard of a relevant of key indicators.

4

Establish a Time Use Satellite Account

8

Improve the data basis of material needs satisfiers and their affordability

### LEVEL OF GOVERNANCE

1

Define binding targets for wellbeing and sustainability dimensions

2

Use wellbeing and sustainability metrics for allocation of funds

3

Implement effective enforcement mechanisms for wellbeing and sustainability targets



## "Statistics Bloom in Harmony"

Doesn't matter far or near  
Strength in numbers  
we don't live in fear

Birds of feather flock together  
Statistics our form of adour  
We, will always live it up

Prechorus  
So let us live in solidarity  
And in the world arena we'll succeed  
It is statistics that will come to be  
The reason we will bloom in harmony

Chorus

Everybody undivided  
Data's where our hearts reside in  
There will always be a bind

Just like fire that ignites  
That's how brightly lit our dreams are  
We'll reach higher than the stars

Sending love to one another  
Leaving no one in a slumber  
We will stand with unity

Mustering our courage while  
Embracing our disparities  
We'll achieve our victory

One dream with unity  
One love with harmony

## "Statistik Segalanya Pasti"

Tak kira walau apa  
Cabaran dan aral melintang  
Statistik meringankan  
Segala beban yang menjelma  
Gementar tiada

Prechorus  
Bersama kita teguh hadapi  
Bentala dipenuhi misteri  
Namun statistik kan melindungi  
Statistik petunjuk realiti

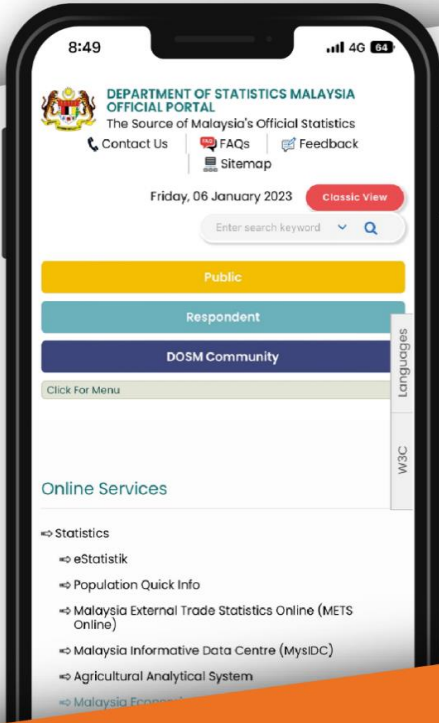
Chorus  
Kesejahteraan negara  
Perpaduan seluruh bangsa  
Dengan irama data  
Tidak hanya berbicara  
Pagi hingga ke senja  
Semangat yang terus membara  
Data dan kehidupan berteraskan harapan  
dan impian kemakmuran  
Segalanya pasti  
Bergalaskan strategi  
Menuju aspirasi

Harapan.. Keamanan  
Impian... Kedamaian..

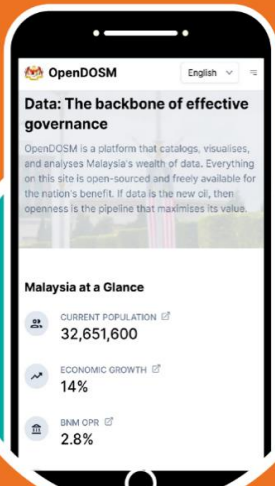




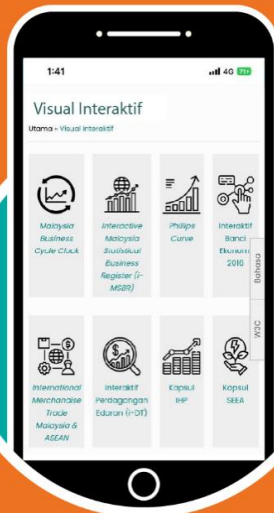
# Online Services DOSM



Scan for  
Online Services DOSM



OpenDOSM



Interactive  
Visualisation



Dashboard

Contact Us

- [www.dosm.gov.my](http://www.dosm.gov.my)
- [info@dosm.gov.my](mailto:info@dosm.gov.my)  
[data@dosm.gov.my](mailto:data@dosm.gov.my)
- +6 03 8885 7000
- +6 03 8888 9248

