



MINISTRY OF ECONOMY
DEPARTMENT OF STATISTICS MALAYSIA

MONTHLY RUBBER STATISTICS MALAYSIA, FEBRUARY 2016

1. PRODUCTION

Production of natural rubber (NR) in February 2016 was recorded at **54,564** tonnes, dropped by **20,884** tonnes (**-27.7%**) as compared to January 2016. Year-on-year also showed a decrease in rubber production by **19,905** tonnes (**-26.7%**). The main contributor of NR is smallholding sector of **92.3** per cent while the rest from the estate sector. Month-on-month, both of smallholding and estate sectors recorded a decrease in production at **27.6** per cent and **28.4** per cent respectively.

2. EXPORTS

A total of **52,651** tonnes of NR were exported in February 2016, increased by **1,148** tonnes (**+2.2%**) as compared to January 2016. Comparison with the same month in 2015 showed that the exports has dropped by **3,154** tonnes (**-5.7%**). Standard Malaysian Rubber (S.M.R.) contributed **94.7** per cent of the total NR exports whereby **61.9** per cent was S.M.R. 20.

NR was mainly exported to the People's Rep. of China (**39.9%**), followed by Germany (**13.5%**), Islamic Rep. of Iran (**8.5%**), U.S.A. (**5.5%**), Finland (**2.9%**), Taiwan (**2.5%**), Turkey (**2.5%**), Brazil (**2.3%**) and Rep. of Korea (**2.1%**).

3. IMPORTS

The total imports of NR in February 2016 amounted to **80,759** tonnes. Imports fell by **28,486** tonnes (**-26.1%**) from January 2016 but increased by **15,815** tonnes (**+24.4%**) from February 2015. Latex Concentrate and Standard Rubber were the main types of NR imported, at **31.8** per cent and **15.3** per cent respectively. NR was imported mainly from Thailand (**70.5%**) and Viet Nam (**6.7%**).

4. DOMESTIC CONSUMPTION

The domestic consumption of NR in February 2016 was **39,265** tonnes, dropped by **265** tonnes (**-0.7%**) from January 2016. However, when compared to February 2015, domestic consumption of NR shows an increase of **3,701** tonnes (**+10.4%**).

The rubber gloves industry is the major industry in consuming NR with a total of **29,938** tonnes (**76.2%**).

5. STOCKS

The level of stocks at the end of February 2016 was recorded at **237,672** tonnes. The level of stocks

increased when compared to month-on-month and year-on-year at **15,303** tonnes (**+6.9%**) and **31,299** tonnes (**+15.1%**) respectively.

6. AVERAGE MONTHLY PRICE PER KILOGRAMME

(Noon Quotations - F.O.B.)

In February 2016, the average monthly price of latex concentrate was **355.58** sen per kilogramme, went up by **8.05** sen (+**2.3%**) from the previous month but decreased by **27.75** sen (-**7.2%**) when compared to February 2015. The average monthly price of S.M.R. 20 was recorded at **454.03** sen per kilogramme, dropped by **12.86** sen (-**2.8%**) from January 2016 and **45.77** sen (-**9.2%**) from February 2015 respectively.

7. EMPLOYMENT

The total number of persons engaged in rubber estates at the end of February 2016 was **11,433** persons. Out of this total, **11,429** were paid employees with total salaries & wages amounting to **RM13.2** million. The number of paid employees decreased by **7.2** per cent from February 2015.

8. PRODUCTIVITY

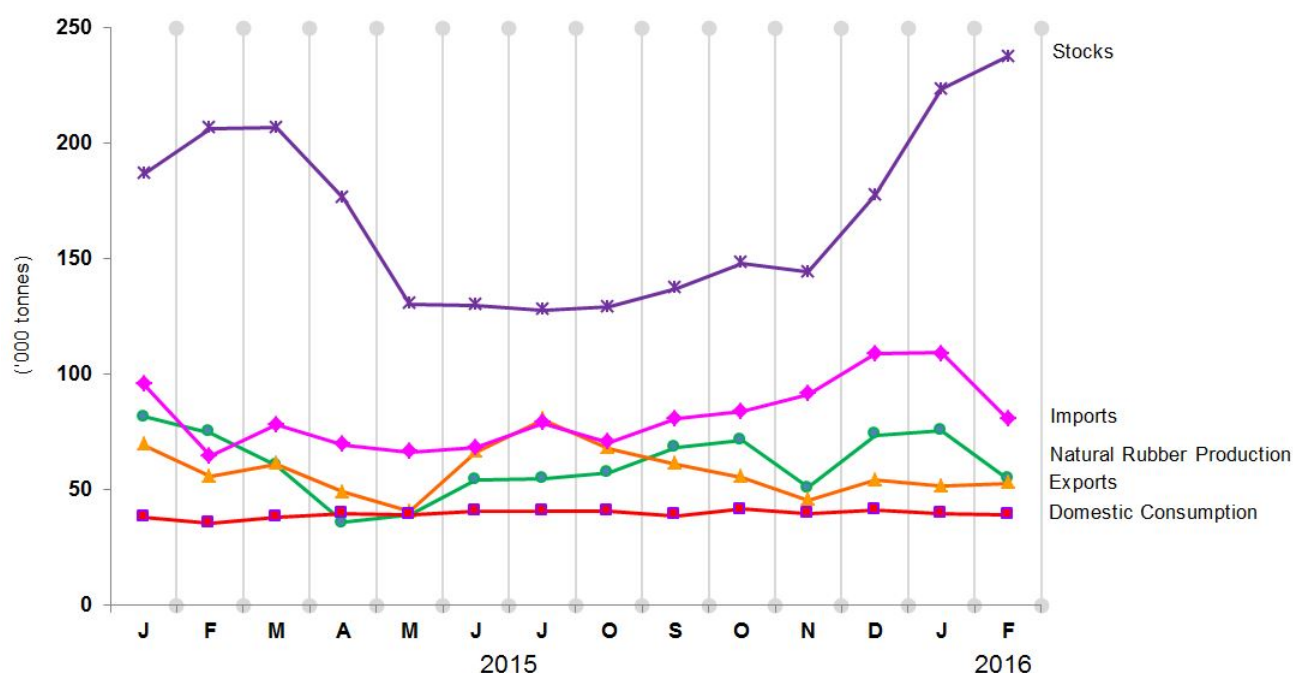
The productivity of NR production on estates was recorded at **106.1** kilogramme per hectare in February 2016. The productivity of NR production dropped **41.0** kilogramme per hectare (-**27.9%**) when compared to month-on-month. Year-on-year also shows a decrease in productivity by **32.8** kilogramme per hectare (-**23.6%**).

9. PRINCIPAL STATISTICS

PRINCIPAL STATISTICS OF RUBBER, MALAYSIA, FEBRUARY 2016

Principal Statistics	February 2016	January 2016	February 2015	Change month-on-month (%)	Change year-on-year (%)
Production (tonnes)	54,564	75,448	74,469	-27.7	-26.7
Exports (tonnes)	52,651	51,503	55,805	2.2	-5.7
Imports (tonnes)	80,759	109,245	64,944	-26.1	24.4
Domestic consumption (tonnes)	39,265	39,530	35,564	-0.7	10.4
Closing stocks (tonnes)	237,672	222,369	206,443	6.9	15.1
Number of paid workers	11,429	11,733	12,313	-2.6	-7.2
Salaries & wages (RM'000)	13,176	15,663	15,224	-15.9	-13.5

MONTHLY PRODUCTION, EXPORTS, IMPORTS, DOMESTIC CONSUMPTION AND STOCKS OF NATURAL RUBBER 2015/2016



*Notes:

Data for February 2016 is **provisional**. The data will be updated based on the latest available figures and subsequently published in the March 2016 publication.

Released By:

THE OFFICE OF CHIEF STATISTICIAN MALAYSIA
DEPARTMENT OF STATISTICS, MALAYSIA
#myHariBulan# #myBulan# #myTahun#

Contact person:

Ho Mei Kei
 Public Relation Officer
 Corporate and User Services Division
 Department of Statistics, Malaysia
 Tel : +603-8885 7942
 Fax : +603-8888 9248
 Email : mkho@stats.gov.my

Contact person:

Baharudin Mohamad
 Public Relation Officer
 Strategic Communication and International Division
 Department of Statistics Malaysia
 Tel : +603-8090 4681
 Fax : +603-8888 9248

Email : [baharudin\[at\]dosm.gov.my](mailto:baharudin[at]dosm.gov.my)

Copyright ©2025 Department of Statistics Malaysia Official Portal. All Rights Reserved.