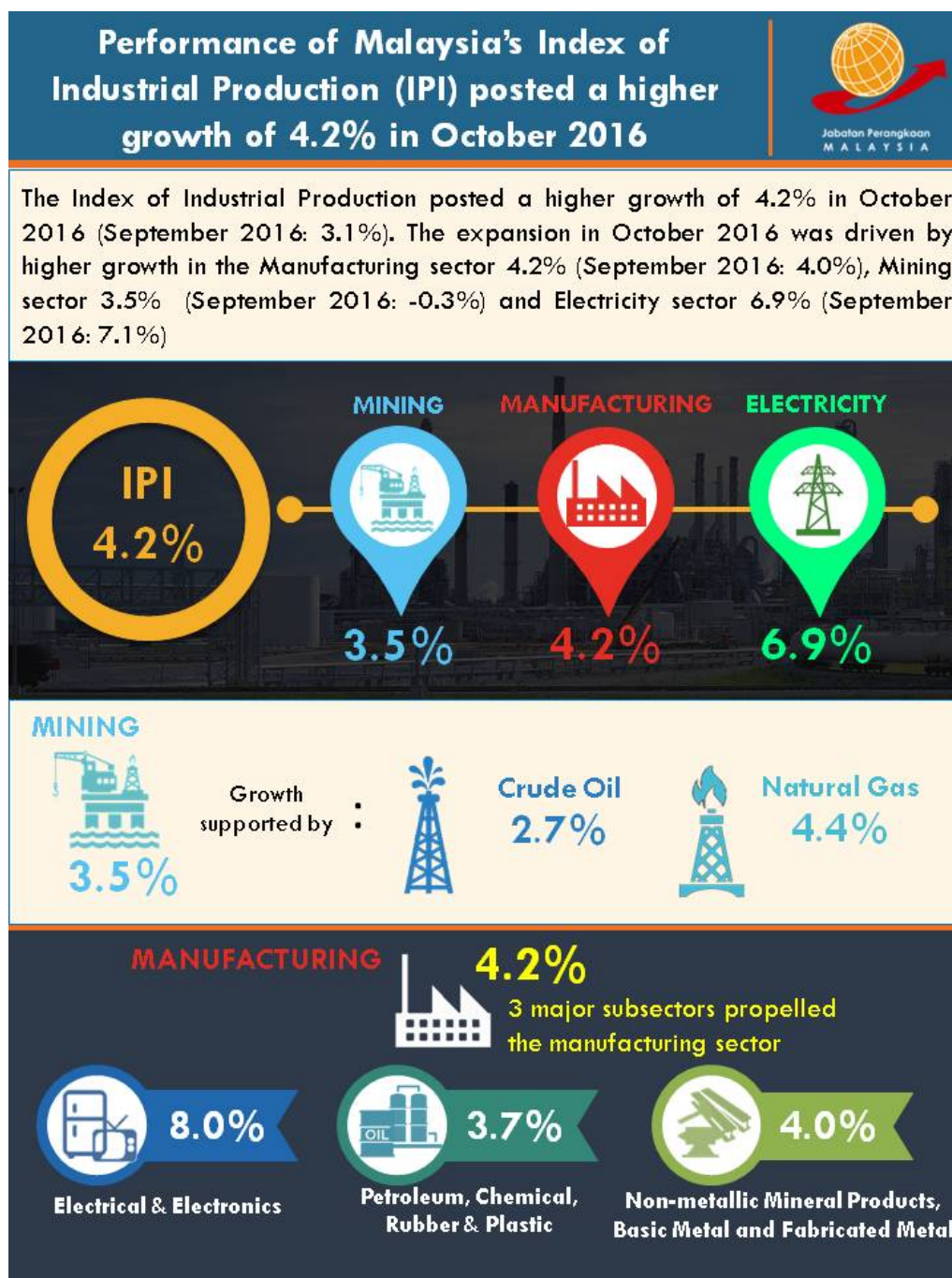




MINISTRY OF ECONOMY
DEPARTMENT OF STATISTICS MALAYSIA

INDEX OF INDUSTRIAL PRODUCTION, MALAYSIA OCTOBER 2016



Malaysia's Index of Industrial Production (IPI) posted a higher growth of 4.2% in October 2016

The Index of Industrial Production (IPI) posted a higher growth of **4.2%** in October 2016 as compared to the same month of the previous year. The expansion in October 2016 was driven by higher growth in all indices: Manufacturing (**4.2%**), Mining (**3.5%**) and Electricity (**6.9%**). The IPI in September 2016 has been revised from 3.2% to **3.1%** due to the revision in the Mining index.

The Manufacturing sector output continued to expand at **4.2%** in October 2016 after registering an increase of 4.0% in September 2016. The major sub-sectors which recorded growth in October 2016 were: Electrical and Electronics Products (**8.0%**); Petroleum, Chemical, Rubber and Plastic Products (**3.7%**) and Non-metallic Mineral Products, Basic Metal and Fabricated Metal Products (**4.0%**).

The Mining sector output rebounded to **3.5%** in October 2016 after a decrease of 0.3% in September 2016. The expansion in October 2016 was supported by the increase in Crude Oil index (**2.7%**) and Natural Gas index (**4.4%**).

The Electricity sector output expanded steadily by **6.9%** in October 2016 following an increase of 7.1% in September 2016.

***Notes:**

Data for October 2016 is **provisional**. The data will be updated based on the latest available figures and subsequently published in the publication November 2016.

Released By:

**THE OFFICE OF CHIEF STATISTICIAN MALAYSIA
DEPARTMENT OF STATISTICS, MALAYSIA
9 DISEMBER 2016**

Contact person:

Ho Mei Kei
Public Relation Officer
Corporate and User Services Division
Department of Statistics, Malaysia
Tel : +603-8885 7942
Fax : +603-8888 9248
Email : mkho[at]stats.gov.my

Contact person:

Baharudin Mohamad
Public Relation Officer
Strategic Communication and International Division
Department of Statistics Malaysia
Tel : +603-8090 4681
Fax : +603-8888 9248
Email : baharudin[at]dosm.gov.my

Copyright ©2025 Department of Statistics Malaysia Official Portal. All Rights Reserved.