



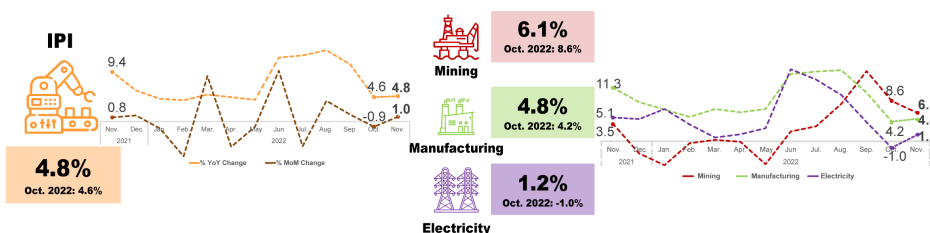
MINISTRY OF ECONOMY  
DEPARTMENT OF STATISTICS MALAYSIA

## INDEX OF INDUSTRIAL PRODUCTION MALAYSIA

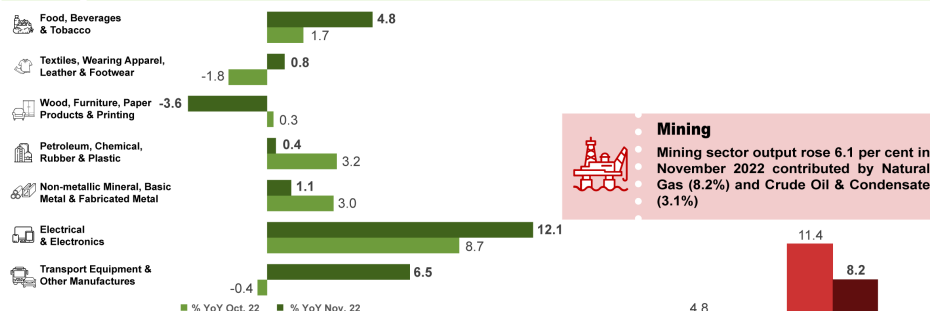


### Malaysia's Industrial Production Index November 2022

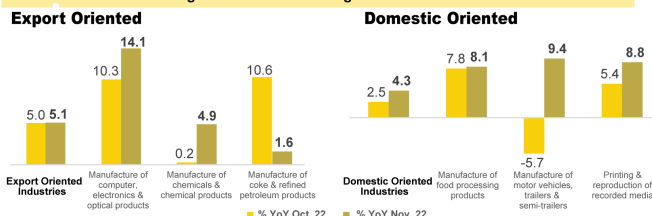
Malaysia's Industrial Production Index (IPI) rose 4.8 per cent in November 2022  
Expansion in all sectors supported the IPI performance during the month



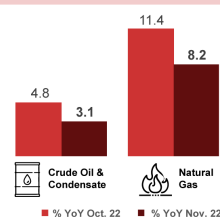
**Manufacturing**  
The increase of 4.8 per cent in Manufacturing sector output in November 2022 was mainly driven by the growth in Electrical & Electronics Products (12.1%); Food, Beverages & Tobacco Products (4.8%); and Transport Equipment & Other Manufactures (6.5%) subsectors



**Export and Domestic Oriented Industries**  
Both export-oriented industries (5.1%) and domestic-oriented industries (4.3%) contribute to the growth of Manufacturing sector



**Mining**  
Mining sector output rose 6.1 per cent in November 2022 contributed by Natural Gas (8.2%) and Crude Oil & Condensate (3.1%)



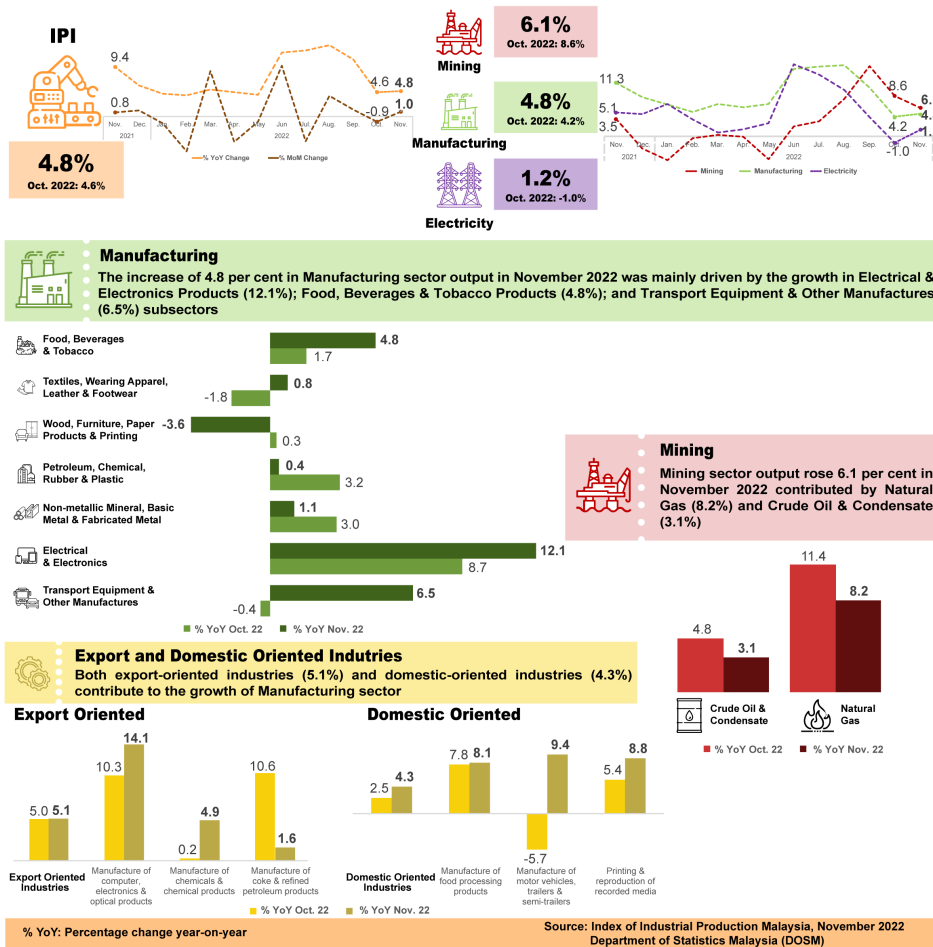
% YoY: Percentage change year-on-year

Source: Index of Industrial Production Malaysia, November 2022  
Department of Statistics Malaysia (DOSM)



## Malaysia's Industrial Production Index November 2022

Malaysia's Industrial Production Index (IPI) rose 4.8 per cent in November 2022  
Expansion in all sectors supported the IPI performance during the month



## Malaysia's Industrial Production Index (IPI) rose by 4.8 per cent in November 2022 reinforced by expansion in all sectors

The Industrial Production Index (IPI) rose by 4.8 per cent in November 2022 after recording an increase of 4.6 per cent last month. The growth was further augmented by Mining and Manufacturing indices which expanded by 6.1 per cent and 4.8 per cent respectively. In the meantime, the Electricity index turned around to record a positive growth of 1.2 per cent during the month. A month-on-month comparison, the IPI increased by 1.0 per cent as against the fall of 0.9 per cent registered in the previous month.

Output of Manufacturing sector increased by 4.8 per cent in November 2022, higher than 4.2 per cent growth in recorded in October 2022. The sub-sector of Electrical & Electronics Products continued to provide the main impetus to the growth with an increase of 12.1 per cent; followed by Food, Beverages & Tobacco Products (4.8%); and Transport Equipment & Other Manufactures (6.5%).

On the same note, export-oriented industries expanded by 5.1 per cent (October 2022: 5.0%) while domestic-oriented industries increased by 4.3 per cent (October 2022: 2.5%). The expansion in the export-oriented industry was led by the Manufacture of computers, electronics & optical products; and the Manufacture of chemicals & chemical products. In the meantime, the growth of the domestic-oriented industry was underpinned particularly by the Manufacture of food processing products; and the Manufacture of motor vehicles, trailers & semi-trailers.

The output in the Mining sector rose 6.1 per cent in November 2022 after expanding strongly by 8.6 per cent in October 2022. The growth of this sector was contributed by the increment of 8.2 per cent in the Natural Gas index and 3.1 per cent in the Crude Oil & Condensate index. As compared to the previous month, the Mining index increased by 3.5 per cent (October 2022: +1.8%).

Analysing the IPI performance from January to November 2022 recorded an expansion of 7.3 per cent as compared to the same period of the previous year. During the period, the Manufacturing index increased by 8.7 per cent; the Electricity index (5.1%) and Mining index (2.7%).

The full publication of the Industrial Production Index, November 2022 can be downloaded through [eStatistik](#) portal.

**\* Notes:**

Data for November 2022 is **provisional**. The data will be updated based on the latest available figures and subsequently published in December 2022 publication.

**Released by:**

**DEPARTMENT OF STATISTICS MALAYSIA**

**11 January 2023**

**Contact person:**

Baharudin Mohamad

Public Relation Officer

Strategic Communication and International Division

Department of Statistics Malaysia

Tel : +603-8090 4681

Fax : +603-8888 9248

Email : [baharudin\[at\]dosm.gov.my](mailto:baharudin[at]dosm.gov.my)

**Copyright ©2025 Department of Statistics Malaysia Official Portal. All Rights Reserved.**