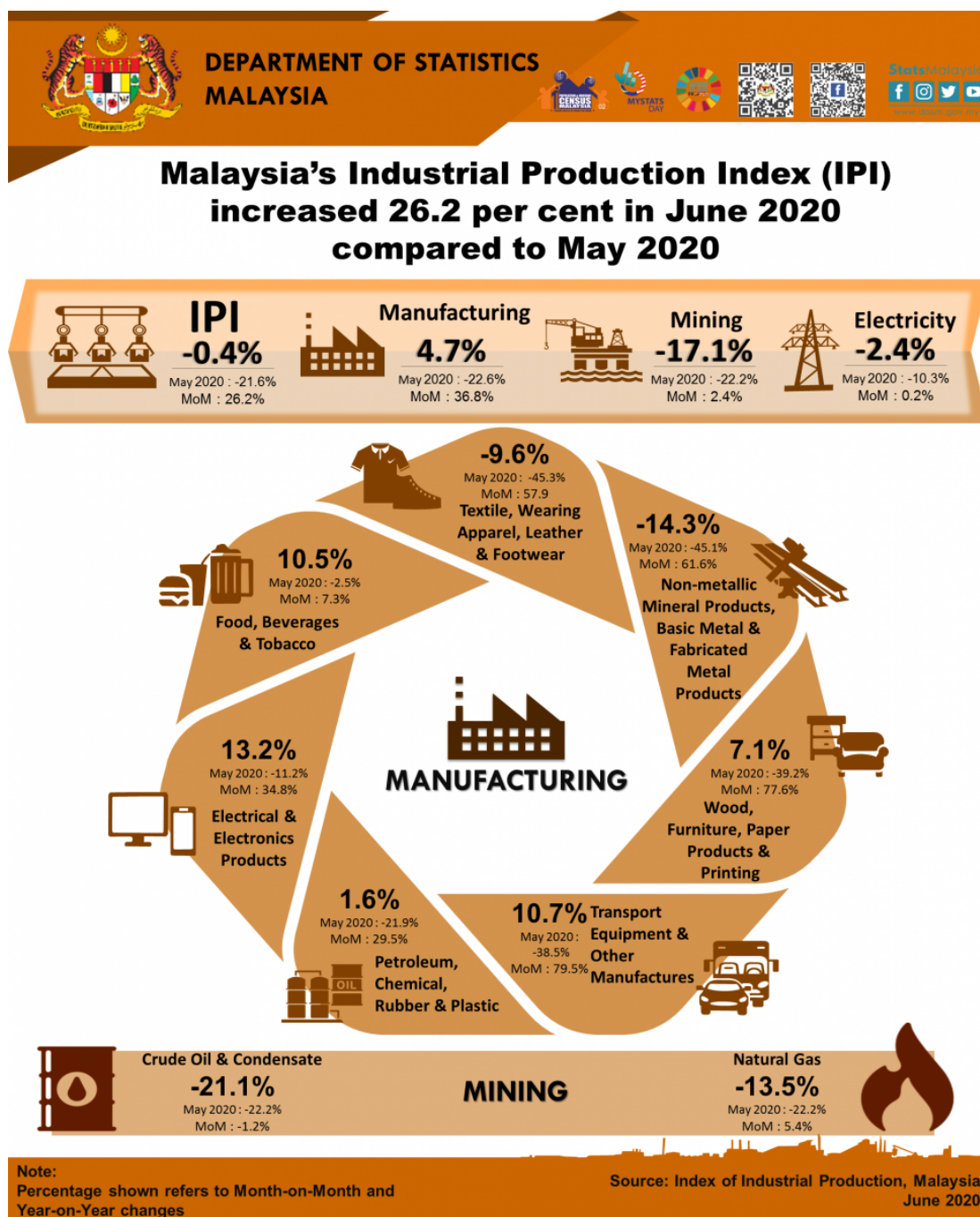




MINISTRY OF ECONOMY  
DEPARTMENT OF STATISTICS MALAYSIA

## INDEX OF INDUSTRIAL PRODUCTION, MALAYSIA JUNE 2020



**Malaysia's Industrial Production Index (IPI) increased 26.2 per cent in June 2020 compared to May 2020**

The Industrial Production Index (IPI) surged **26.2 per cent** in June 2020 as compared with the previous month since the government allowed more industries to resume operations from May 2020 onwards. Based on month-on-month comparison, the increment of IPI in June 2020 was due to the increase in all indices; index of Manufacturing (**36.8%**), index of Mining (**2.4%**) and index of Electricity (**0.2%**).

However, on year-on-year basis, the IPI decreased **0.4 per cent** in June 2020 as compared with the same month of the previous year. The decline in IPI in June 2020 was due to the decrease in the index of Mining (**-17.1%**) and Electricity (**-2.4%**). Meanwhile, the Manufacturing index recorded an increase of **4.7 per cent**.

The Manufacturing sector output increased by **4.7 per cent** in June 2020 after recording a decrease of 22.6 per cent in May 2020. The major sub-sectors contributing to the growth in Manufacturing sector in June 2020 were Electrical and Electronics Products (**13.2%**), Food, Beverages and Tobacco (**10.5%**) and Transport Equipment and Other Manufacturers (**10.7%**).

The Mining sector output dropped **17.1 per cent** in June 2020 as compared to the same period of the previous year. The negative growth was due to the decrease in Natural Gas index (**-13.5%**) and Crude Oil and Condensate index (**-21.1%**).

The Electricity sector output decreased **2.4 per cent** in June 2020 as compared to the same month of the previous year.

The IPI for the second quarter 2020 recorded a significant decline of **17.9 per cent** as compared to the same period of the previous year. This decrease was due to the deterioration in all indices; Mining index (**-19.6%**), Manufacturing index (**-18.1%**) and Electricity index (**-10.8%**).

The full publication of the Industrial Production Index, June 2020 can be downloaded through [eStatistik](#) portal.

**\*Notes:**

Data for June 2020 is **provisional**. The data will be updated based on the latest available figures and subsequently published in the July 2020 publication.

**Released By:**

**DATO' SRI DR. MOHD UZIR MAHIDIN**  
**CHIEF STATISTICIAN MALAYSIA**  
**DEPARTMENT OF STATISTICS, MALAYSIA**

 DrUzir\_Mahidin   Dr\_Uzir

**#myHariBulan# #myBulan# #myTahun#**

**Contact person:**

Mohd Yusrizal Ab Razak  
Public Relation Officer

Strategic Communication and International Division  
Department of Statistics, Malaysia  
**Tel** : +603-8885 7942  
**Fax** : +603-8888 9248  
**E-mail** : yusrizal.razak[at]dosm.gov.my

**Contact person:**

Baharudin Mohamad  
Public Relation Officer  
Strategic Communication and International Division  
Department of Statistics Malaysia  
Tel : +603-8090 4681  
Fax : +603-8888 9248  
Email : baharudin[at]dosm.gov.my

**Copyright ©2025 Department of Statistics Malaysia Official Portal. All Rights Reserved.**