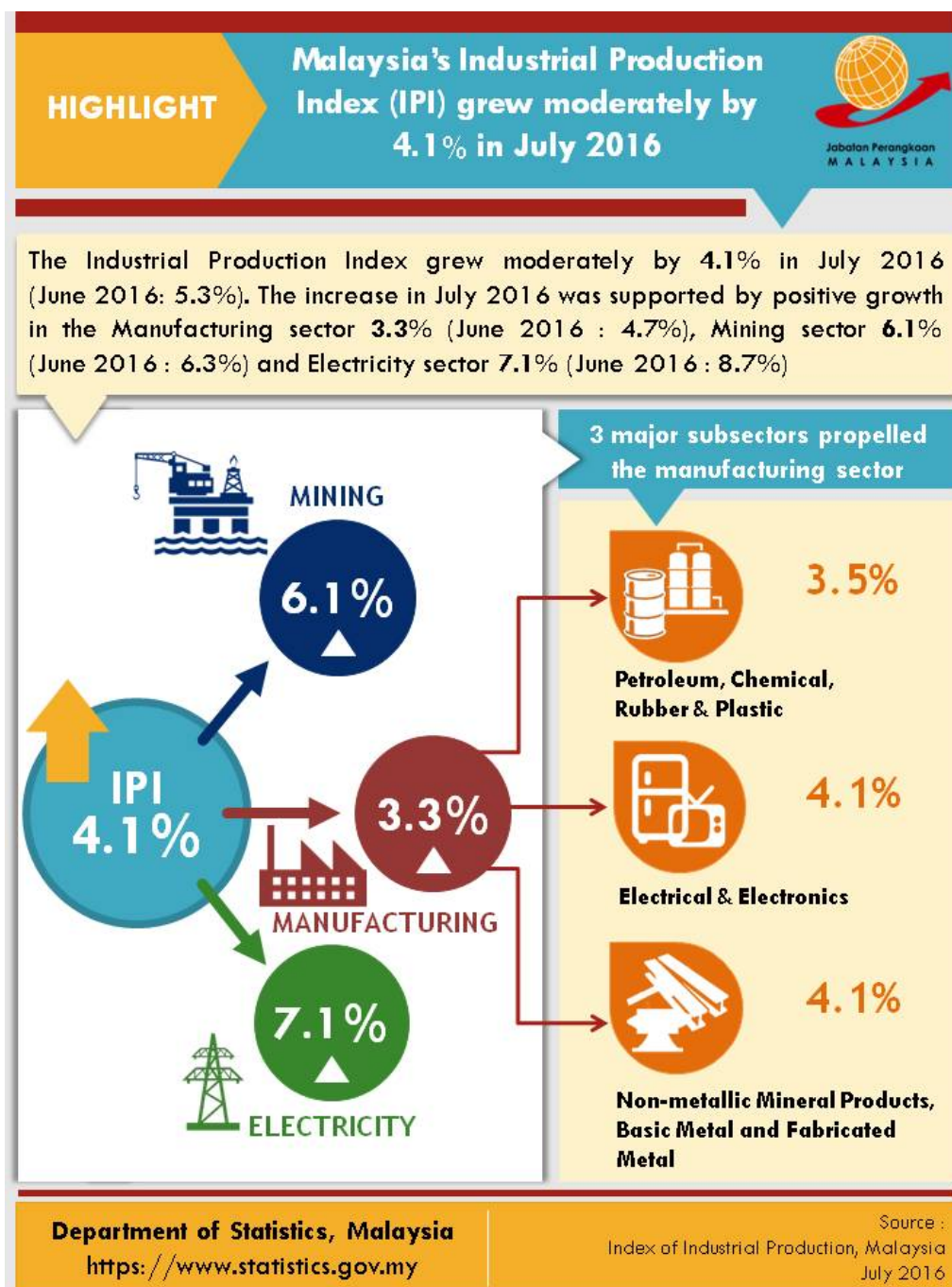




MINISTRY OF ECONOMY
DEPARTMENT OF STATISTICS MALAYSIA

INDEX OF INDUSTRIAL PRODUCTION, MALAYSIA JULY 2016



Malaysia's Industrial Production Index (IPI) grew moderately by 4.1% in July 2016

The Industrial Production Index (IPI) in July 2016 grew moderately by **4.1%** as compared to the same month of the previous year. The increase in July 2016 was supported by positive growth in all indices: Manufacturing (**3.3%**), Mining (**6.1%**) and Electricity (**7.1%**).

The Manufacturing sector output registered modest growth of **3.3%** in July 2016 after an increase of 4.7% recorded in June 2016. The major sub-sectors which recorded expansions in July 2016 were: Petroleum, Chemical, Rubber and Plastic Products (**3.5%**); Electrical and Electronics Products (**4.1%**) and Non-metallic Mineral Products, Basic Metal and Fabricated Metal Products (**4.1%**).

The Mining sector output recorded a growth of **6.1%** in July 2016 after a 6.3% increase in June 2016. This expansion was contributed by the higher growth in Crude Oil index by **13.9%**. The Natural Gas index, however, declined by **2.7%**.

The Electricity sector output increased further by **7.1%** in July 2016 after registering a 8.7% expansion in June 2016.

***Notes:**

Data for July 2016 is **provisional**. The data will be updated based on the latest available figures and subsequently published in the publication August 2016.

Released By:

THE OFFICE OF CHIEF STATISTICIAN MALAYSIA
DEPARTMENT OF STATISTICS, MALAYSIA
9 SEPTEMBER 2016

Contact person:

Ho Mei Kei
Public Relation Officer
Corporate and User Services Division
Department of Statistics, Malaysia
Tel : +603-8885 7942
Fax : +603-8888 9248
Email : mkho[at]stats.gov.my

Contact person:

Baharudin Mohamad
Public Relation Officer
Strategic Communication and International Division
Department of Statistics Malaysia
Tel : +603-8090 4681
Fax : +603-8888 9248
Email : baharudin[at]dosm.gov.my

Copyright ©2025 Department of Statistics Malaysia Official Portal. All Rights Reserved.